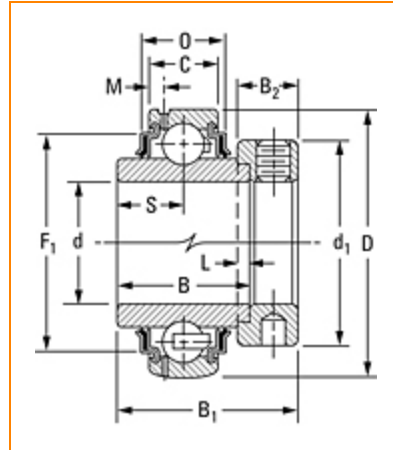


TIMKEN**The Timken Company**

4500 Mt Pleasant St. NW

N. Canton, OH 44720

Phone: (234) 262-3000**E-Mail:** CustomerCAD@timken.com • **Web site:** www.timken.com**Part Number GE45KRRB, Fafnir® Eccentric Locking Collar Ball Bearings**

[Specifications](#) | [Dimensions](#) | [Basic Load Ratings](#)

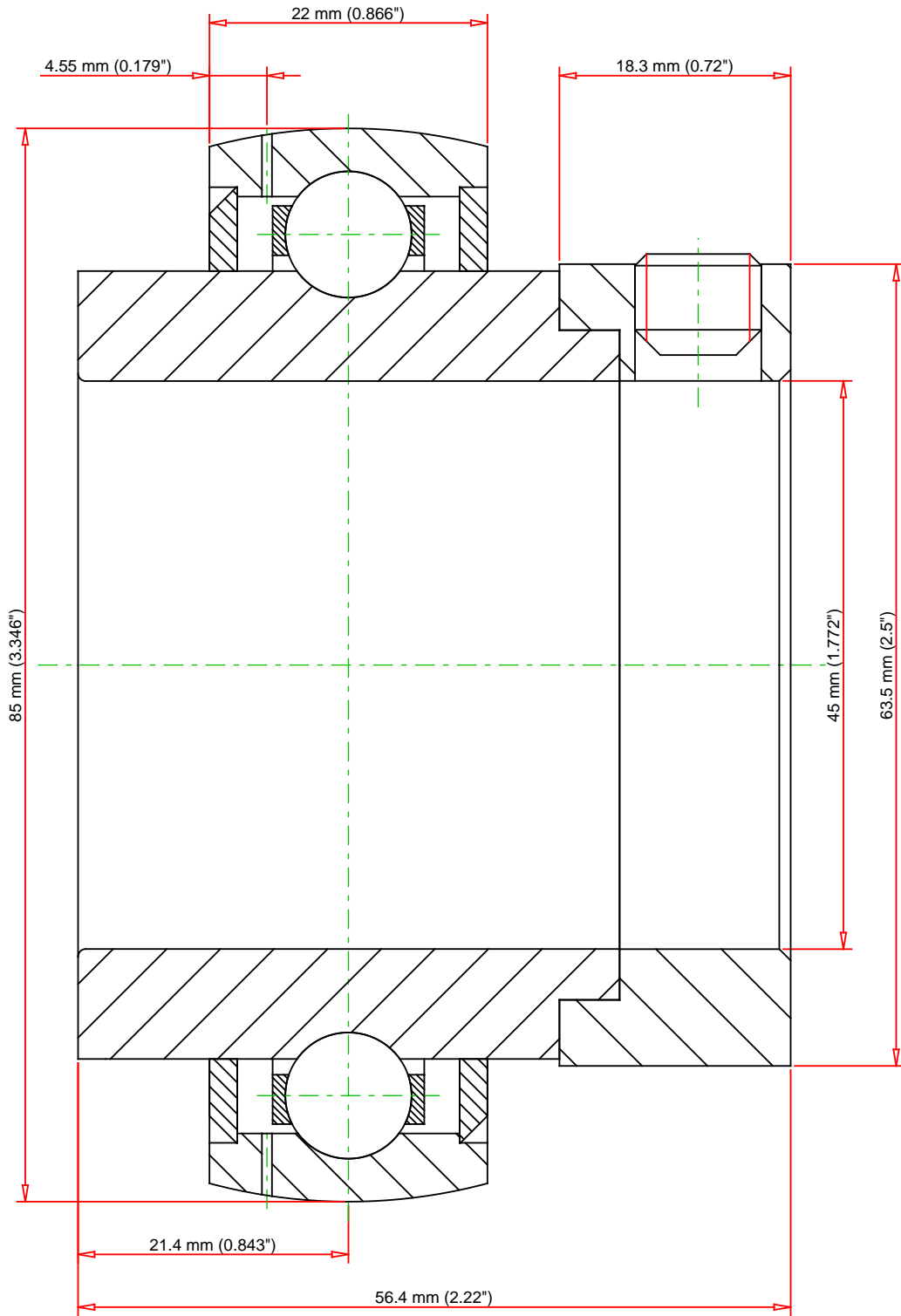
Specifications

Series	Industrial
Shaft Size d	45 mm
Bore Type	Cylindrical bore
Bearing Type	Ball Bearing
Material	Bearing Steel
Lubrication Type	Relubricatable
O.D. Type	Spherical OD
Sub Series	GE..KRRB
Seal Type	Shroud Seal

Outside Diameter D	3.346 in 85 mm
Inner Ring Width B	1.687 in 42.86 mm
Outside Ring Width C	0.866 in 22 mm
Radius r	0.024 in 0.6 mm
Center of Bearing from End S	0.843 in 21.4 mm
Set Screw Size	M10x1.5
Number of Set Screws	2
Angle between Set Screws	90°
Dimension d1	2.5 in 63.5 mm
Dimension M	0.179 in 4.55 mm
Dimension B1	2.22 in 56.4 mm
Dimension B2	0.72 in 18.3 mm

Basic Load Ratings

Static Load Rating	4600 lbf 20500 N
Dynamic Load Rating	8160 lbf 36300 N



Weight	0.5 lb	0.2 kg
--------	--------	--------

TIMKEN®

THE TIMKEN COMPANY
NORTH CANTON, OHIO USA

GE45KRRB

Fafnir® Eccentric Locking Collar Ball Bearings

Static Load Rating	4600 lbf	20500 N
Dynamic Load Rating	8160 lbf	36300 N

Every reasonable effort has been made to ensure the accuracy of the information contained in this writing, but no liability is accepted for errors, omissions or for any other reason.

FOR DISCUSSION ONLY