



The Timken Company

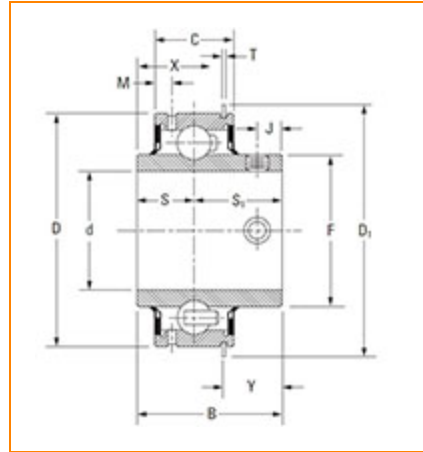
4500 Mt Pleasant St. NW

N. Canton, OH 44720

Phone: (234) 262-3000

E-Mail: CustomerCAD@timken.com • **Web site:** www.timken.com

Part Number ER39, Fafnir® Wide Inner Ring Setscrew Locking Ball Bearings



[Specifications](#) | [Dimensions](#) | [Basic Load Ratings](#)

Specifications

Series	Industrial
Shaft Size d	2 7/16 in
Bore Type	Cylindrical bore
Bearing Type	Ball Bearing
Material	Bearing Steel
Lubrication Type	Relubricatable
O.D. Type	Cylindrical OD
Sub Series	ER
Seal Type	Narrow Shroud
Basic Outer Ring Size	212

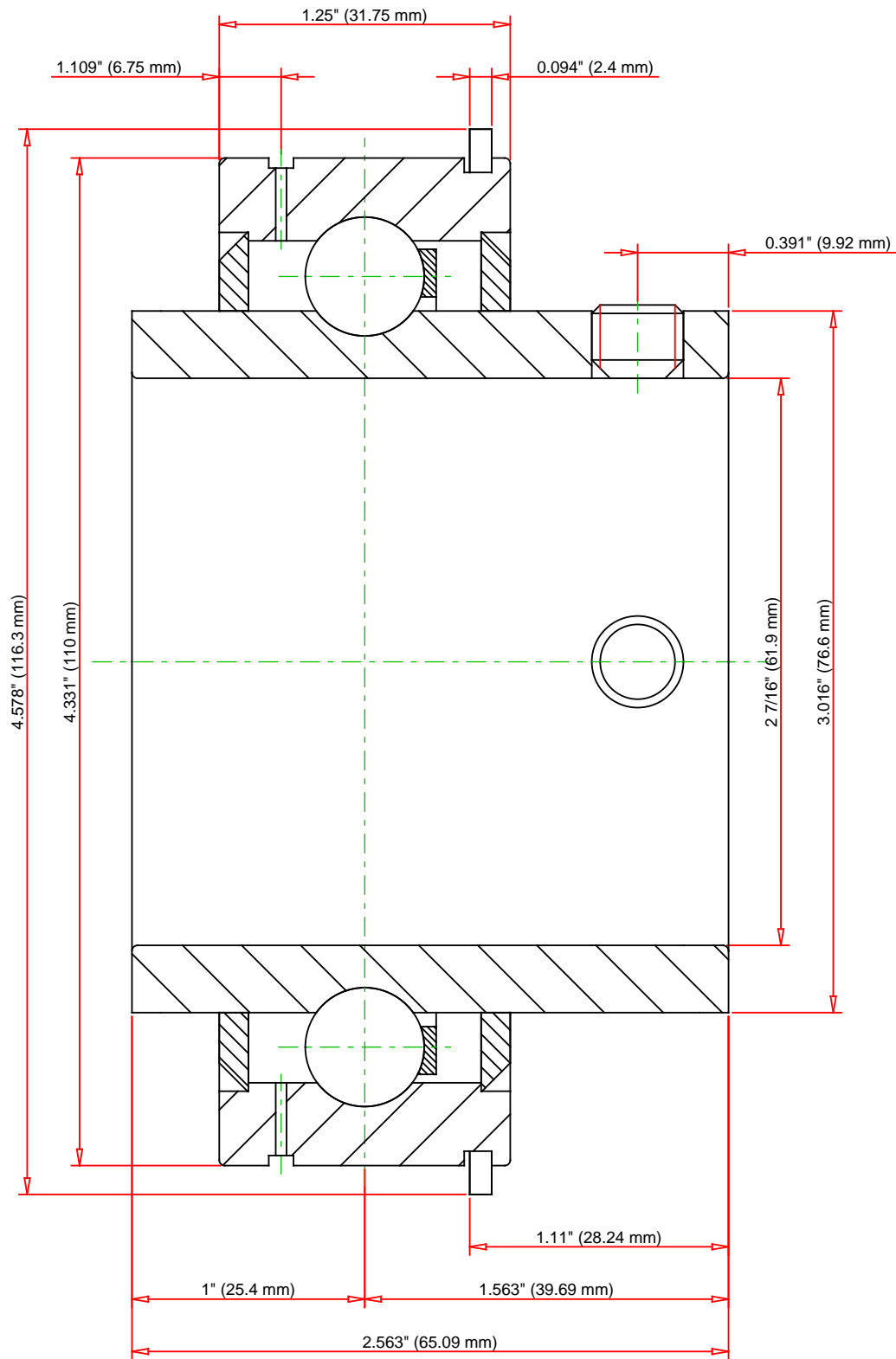


Dimensions

Outside Diameter D	4.331 in 110 mm
Inner Ring Width B	2.5630 in 65.09 mm
Outside Ring Width C	1.2500 in 31.75 mm
Radius r	0.024 in 0.6 mm
Center of Bearing from End S	1 in 25.4 mm
Dimension S1	1.563 in 39.69 mm
Dimension F	3.016 in 76.6 mm
Dimension J	0.391 in 9.92 mm
Dimension M	1.109 in 6.75 mm
Dimension D1	4.578 in 116.3 mm
Dimension T	0.094 in 2.4 mm
Dimension X	1.453 in 36.83 mm
Dimension Y	1.11 in 28.24 mm
Set Screw Size	M10x1.5
Number of Set Screws	2
Angle between Set Screws	90 °

Basic Load Ratings

Static Load Rating	8080 lbf 35875.2 N
Dynamic Load Rating	13100 lbf 58164 N



Weight	3.2 lb	1.45 kg
--------	--------	---------

TIMKEN®

THE TIMKEN COMPANY
NORTH CANTON, OHIO USA

ER39		
Fafnir® Wide Inner Ring Setscrew Locking Ball Bearings		
Basic Load Ratings - C _r	13100 lbf	58164 N
Load Ratings - C _{0r}	8080 lbf	35875.2 N

Every reasonable effort has been made to ensure the accuracy of the information contained in this writing, but no liability is accepted for errors, omissions or for any other reason.

FOR DISCUSSION ONLY