



The Timken Company

4500 Mt Pleasant St. NW

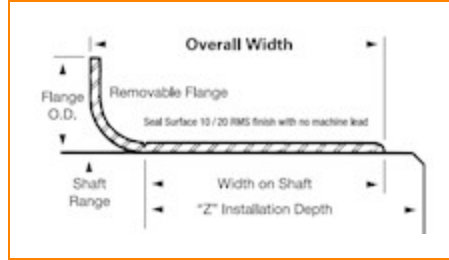
N. Canton, OH 44720

Phone: (234) 262-3000

E-Mail: CustomerCAD@timken.com • **Web site:** www.timken.com

Part Number 99050, Redi Sleeves

Redi Sleeves



[Specifications](#) | [Dimensions](#)

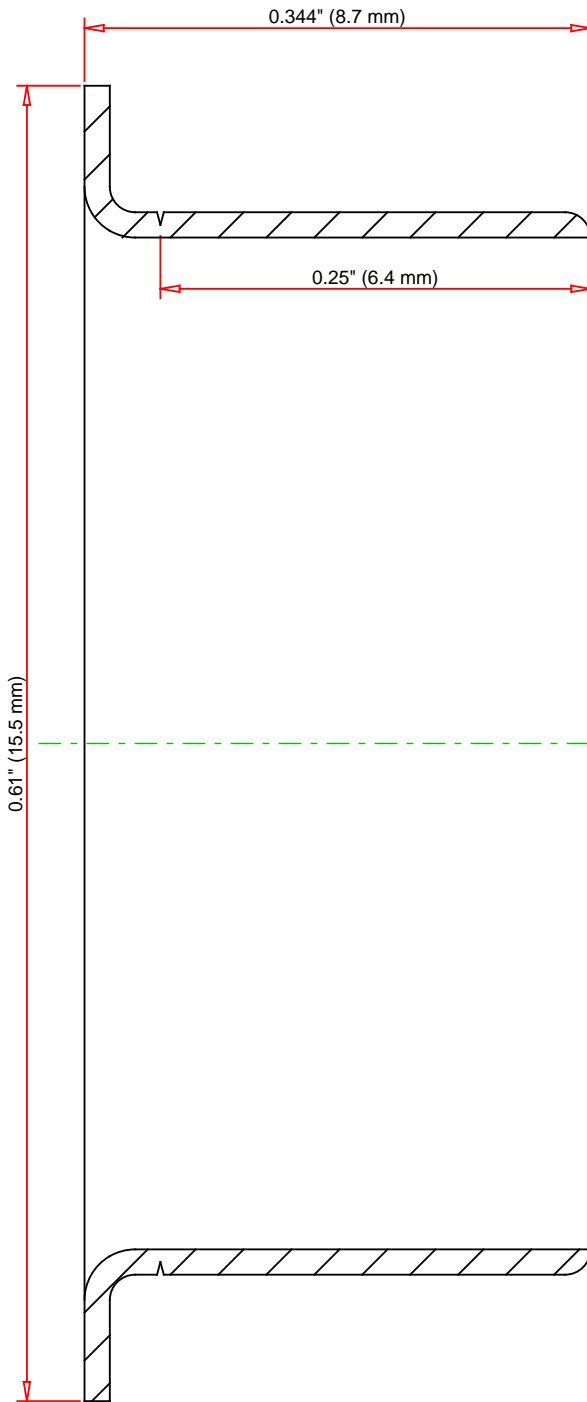
Specifications

Shaft Size Maximum	0.502 in 12.751 mm
Shaft Size Minimum	0.498 in 12.649 mm
Flanged Outside Diameter	0.61 in 15.494 mm
Installation Depth	2.008 in 51.003 mm
Width on Shaft	0.25 in 6.35 mm
Material	Stainless steel
Inch/Metric	Inch



Dimensions

Overall Width	0.344 in 8.738 mm
----------------------	----------------------



DIMENSIONS ACCURATE
DRAWINGS MAY NOT LOOK PROPORTIONAL

IMPERIAL UNITS

TIMKEN®

99050
Redi Sleeves

THE TIMKEN COMPANY
NORTH CANTON, OHIO USA

Every reasonable effort has been made to ensure the accuracy of the information contained in this writing, but no liability is accepted for errors, omissions or for any other reason.

FOR DISCUSSION ONLY