



The Timken Company

4500 Mt Pleasant St. NW

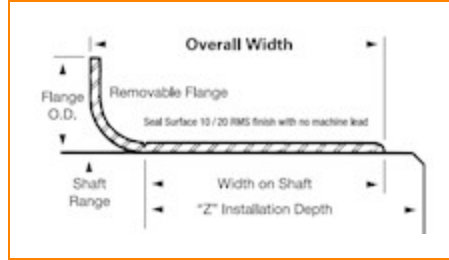
N. Canton, OH 44720

Phone: (234) 262-3000

E-Mail: CustomerCAD@timken.com • **Web site:** www.timken.com

Part Number 99075, Redi Sleeves

Redi Sleeves



[Specifications](#) | [Dimensions](#)

Specifications

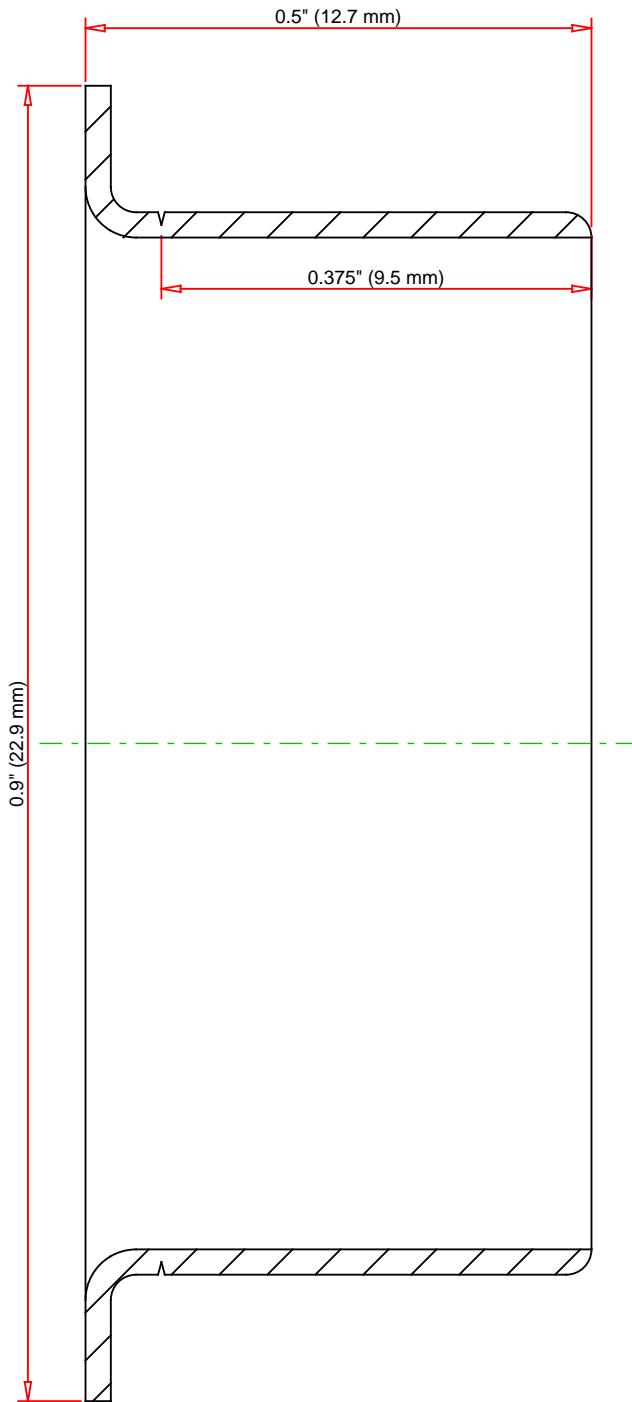
Shaft Size Maximum	0.752 in 19.101 mm
Shaft Size Minimum	0.748 in 18.999 mm
Flanged Outside Diameter	0.9 in 22.86 mm
Installation Depth	2 in 50.8 mm
Width on Shaft	0.375 in 9.525 mm
Material	Stainless steel
Inch/Metric	Inch



Dimensions

Overall Width

0.5 in
12.7 mm



DIMENSIONS ACCURATE
DRAWINGS MAY NOT LOOK PROPORTIONAL

IMPERIAL UNITS

TIMKEN[®]

99075
Redi Sleeves

THE TIMKEN COMPANY
NORTH CANTON, OHIO USA

Every reasonable effort has been made to ensure the accuracy of the information contained in this writing, but no liability is accepted for errors, omissions or for any other reason.

FOR DISCUSSION ONLY