



**The Timken Company**

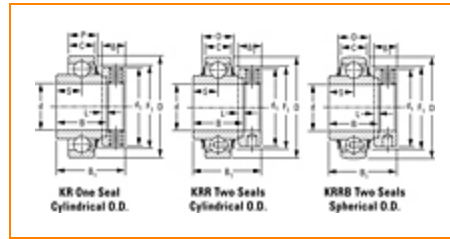
4500 Mt Pleasant St. NW

N. Canton, OH 44720

**Phone:** (234) 262-3000

**E-Mail:** [CustomerCAD@timken.com](mailto:CustomerCAD@timken.com) • **Web site:** [www.timken.com](http://www.timken.com)

## Part Number 1115KRRB, Fafnir® Eccentric Locking Collar Ball Bearings



[Specifications](#) | [Dimensions](#) | [Basic Load Ratings](#)

### Specifications

<b>Manufacturing Part Number</b>	1115KRRB + COL
<b>Series</b>	Industrial
<b>Shaft Size d</b>	1 15/16 in
<b>Bore Type</b>	Cylindrical bore
<b>Bearing Type</b>	Ball Bearing
<b>Material</b>	Bearing Steel
<b>Lubrication Type</b>	Non-Relubricatable
<b>O.D. Type</b>	Spherical OD
<b>Sub Series</b>	1..KRRB
<b>Seal Type</b>	Shroud Seal

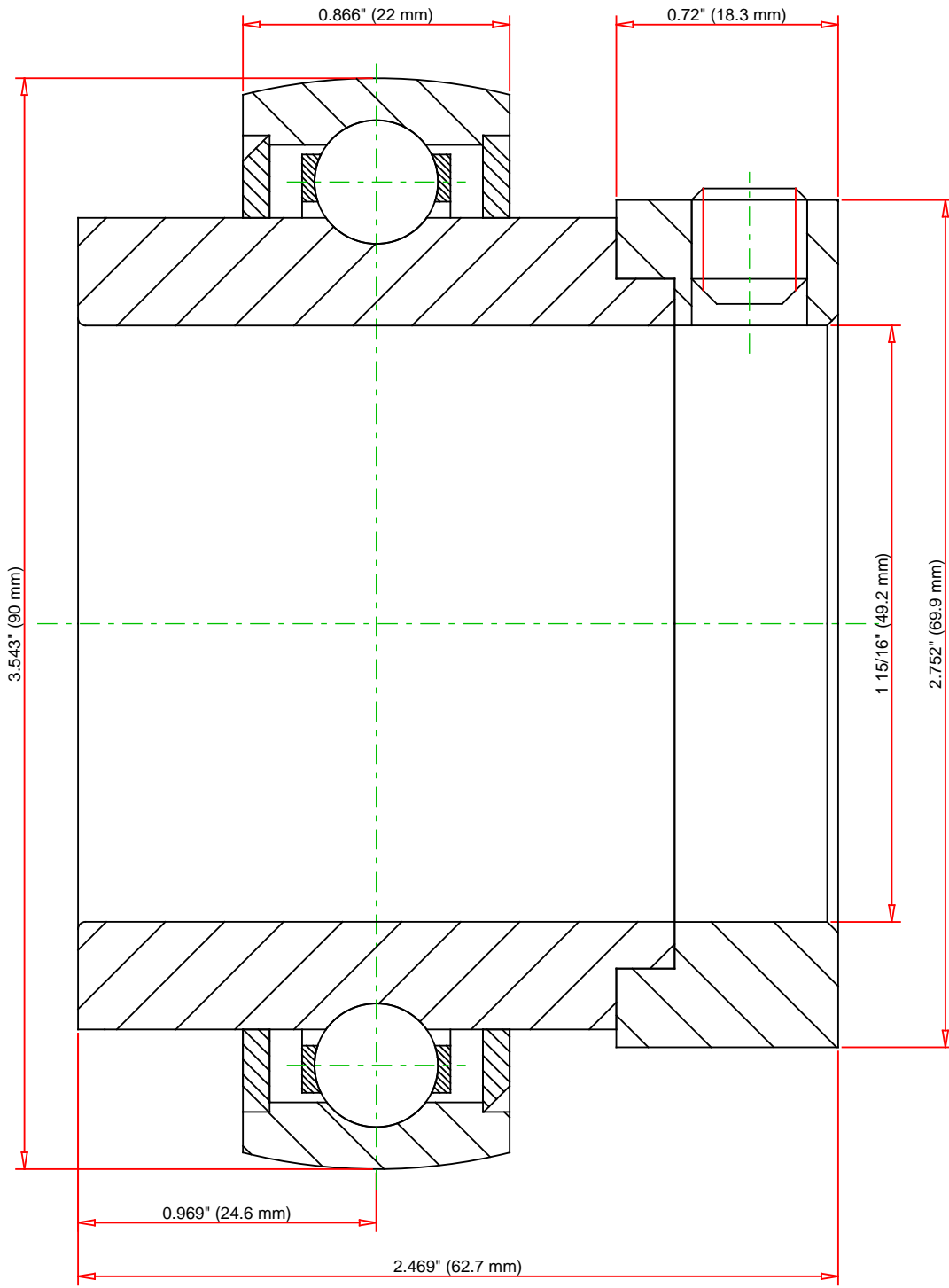


## Dimensions

<b>Outside Diameter D</b>	3.543 in 90 mm
<b>Inner Ring Width B</b>	1.937 in 49.21 mm
<b>Outside Ring Width C</b>	0.866 in 22 mm
<b>Radius r</b>	0.024 in 0.6 mm
<b>Center of Bearing from End S</b>	0.969 in 24.6 mm
<b>Set Screw Size</b>	3/8-16
<b>Number of Set Screws</b>	2
<b>Angle between Set Screws</b>	90 °
<b>Dimension d1</b>	2.752 in 69.9 mm
<b>Dimension B1</b>	2.469 in 62.7 mm
<b>Dimension B2</b>	0.72 in 18.3 mm

## Basic Load Ratings

<b>Static Load Rating</b>	5210 lbf 23200 N
<b>Dynamic Load Rating</b>	8740 lbf 38900 N



Weight	0.5 lb	0.2 kg		<b>1115KRRB</b> Fafnir® Eccentric Locking Collar Ball Bearings	

Every reasonable effort has been made to ensure the accuracy of the information contained in this writing, but no liability is accepted for errors, omissions or for any other reason.

**FOR DISCUSSION ONLY**