



The Timken Company

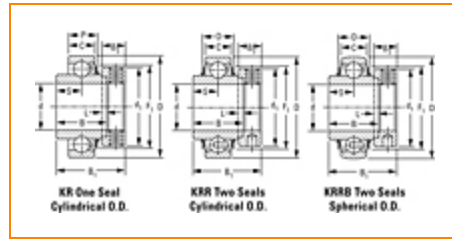
4500 Mt Pleasant St. NW

N. Canton, OH 44720

Phone: (234) 262-3000

E-Mail: CustomerCAD@timken.com • **Web site:** www.timken.com

Part Number 1115KRRB2, Fafnir® Eccentric Locking Collar Ball Bearings



[Specifications](#) | [Dimensions](#) | [Basic Load Ratings](#)

Specifications

Manufacturing Part Number	1115KRRB + COL
Series	Industrial
Shaft Size d	1 15/16 in
Bore Type	Cylindrical bore
Bearing Type	Ball Bearing
Material	Bearing Steel
Lubrication Type	Non-Relubricatable
O.D. Type	Spherical OD
Sub Series	1..KRRB
Seal Type	Shroud Seal

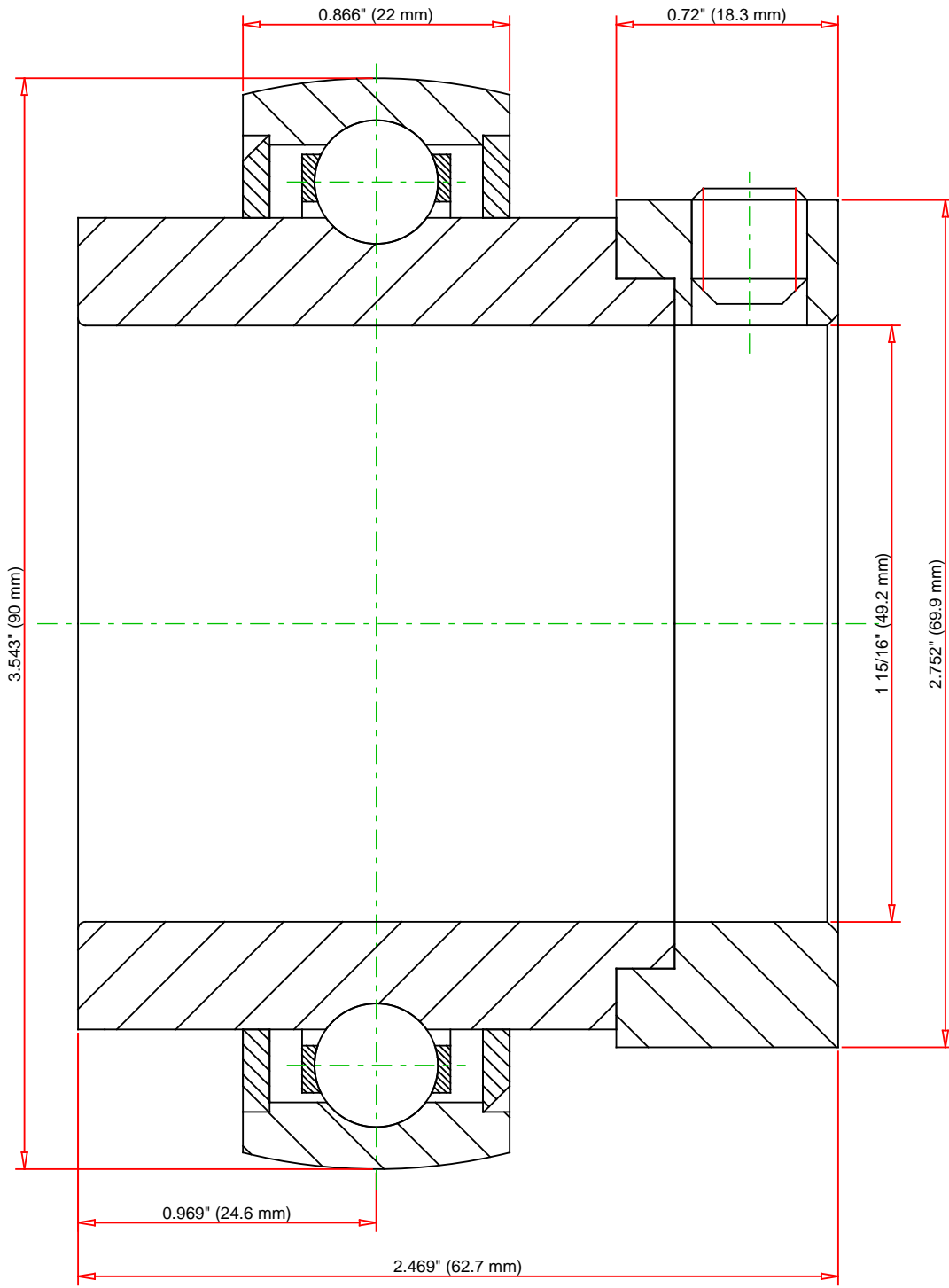


Dimensions

Outside Diameter D	3.543 in 90 mm
Inner Ring Width B	1.937 in 49.21 mm
Outside Ring Width C	0.866 in 22 mm
Radius r	0.024 in 0.6 mm
Center of Bearing from End S	0.969 in 24.6 mm
Set Screw Size	3/8-16
Number of Set Screws	2
Angle between Set Screws	90 °
Dimension d1	2.752 in 69.9 mm
Dimension B1	2.469 in 62.7 mm
Dimension B2	0.72 in 18.3 mm

Basic Load Ratings

Static Load Rating	5210 lbf 23200 N
Dynamic Load Rating	8740 lbf 38900 N



Weight	0.5 lb	0.2 kg
--------	--------	--------

TIMKEN®

THE TIMKEN COMPANY
NORTH CANTON, OHIO USA

1115KRRB2
Fafnir® Eccentric Locking Collar Ball Bearings

Static Load Rating	5210 lbf	23200 N
Dynamic Load Rating	8740 lbf	38900 N

Every reasonable effort has been made to ensure the accuracy of the information contained in this writing, but no liability is accepted for errors, omissions or for any other reason.

FOR DISCUSSION ONLY