



The Timken Company

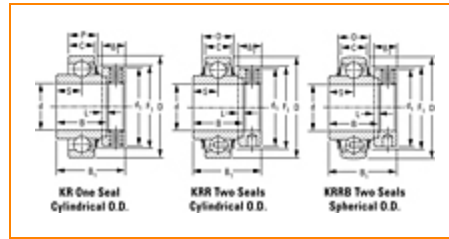
4500 Mt Pleasant St. NW

N. Canton, OH 44720

Phone: (234) 262-3000

E-Mail: CustomerCAD@timken.com • **Web site:** www.timken.com

Part Number 1215KRRB, Fafnir® Eccentric Locking Collar Ball Bearings



[Specifications](#) | [Dimensions](#) | [Basic Load Ratings](#)

Specifications

Manufacturing Part Number	1215KRRB + COL
Series	Industrial
Shaft Size d	2 15/16 in
Bore Type	Cylindrical bore
Bearing Type	Ball Bearing
Material	Bearing Steel
Lubrication Type	Non-Relubricatable
O.D. Type	Spherical OD
Sub Series	1..KRRB
Seal Type	Shroud Seal

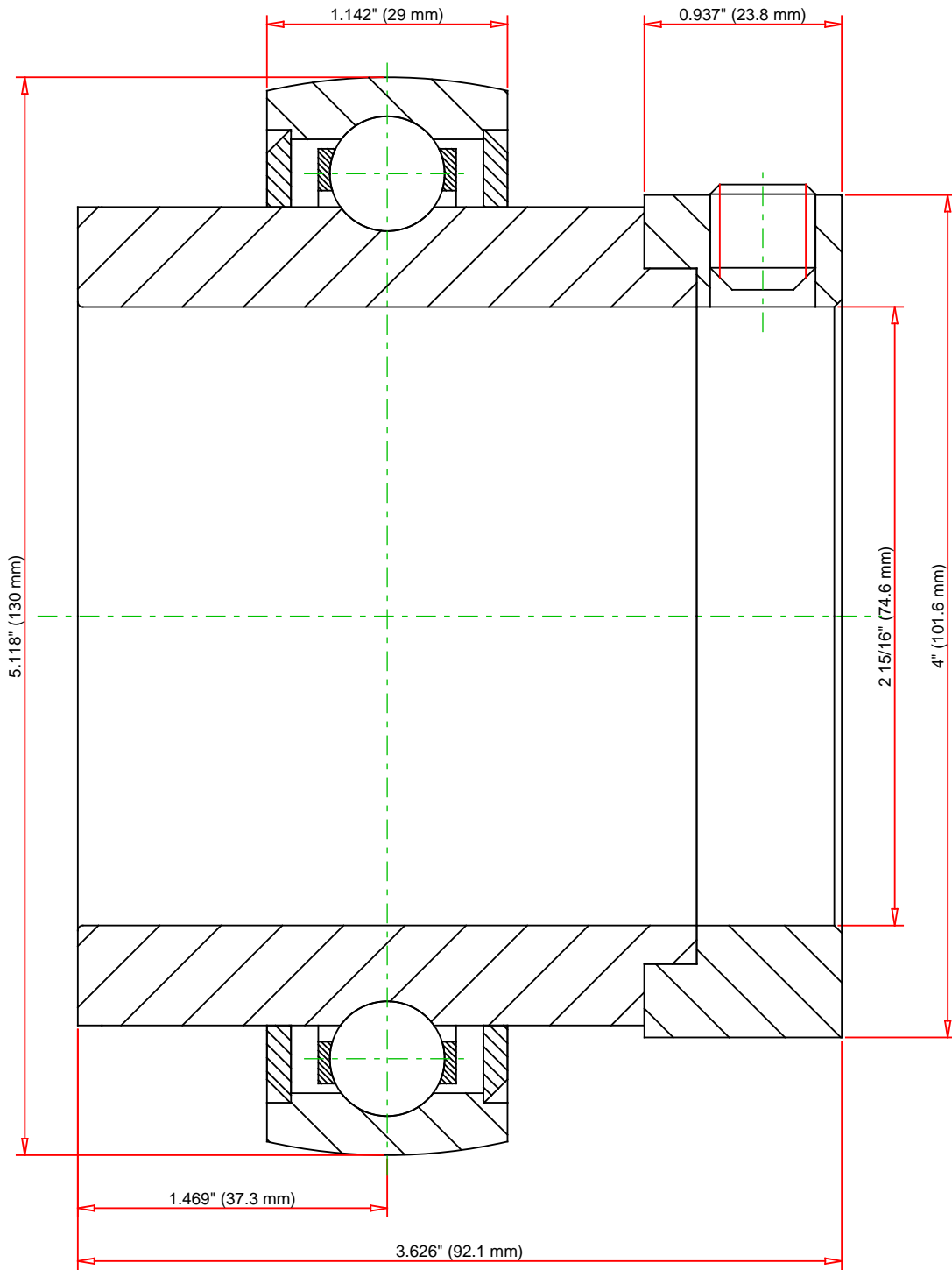


Dimensions

Outside Diameter D	5.118 in 130 mm
Inner Ring Width B	2.937 in 74.61 mm
Outside Ring Width C	1.142 in 29 mm
Radius r	0.024 in 0.6 mm
Center of Bearing from End S	1.469 in 37.3 mm
Set Screw Size	1/2-13
Number of Set Screws	2
Angle between Set Screws	90 °
Dimension d1	4 in 101.6 mm
Dimension B1	3.626 in 92.1 mm
Dimension B2	0.937 in 23.8 mm

Basic Load Ratings

Static Load Rating	10100 lbf 44800 N
Dynamic Load Rating	15500 lbf 68900 N



Weight	0.5 lb	0.2 kg
--------	--------	--------

TIMKEN®

THE TIMKEN COMPANY
NORTH CANTON, OHIO USA

1215KRRB

Fafnir® Eccentric Locking Collar Ball Bearings

Static Load Rating	10100 lbf	44800 N
Dynamic Load Rating	15500 lbf	68900 N

Every reasonable effort has been made to ensure the accuracy of the information contained in this writing, but no liability is accepted for errors, omissions or for any other reason.

FOR DISCUSSION ONLY