


The Timken Company

4500 Mt Pleasant St. NW

N. Canton, OH 44720

Phone: (234) 262-3000

E-Mail: CustomerCAD@timken.com • **Web site:** www.timken.com

Part Number 214W, Fafnir® Maximum Capacity Ball Bearings (200W, 300W)

Radial ball bearings consist of an inner and outer ring with a cage containing a complement of precision balls. The standard Conrad-type bearing has a deep-groove construction capable of handling radial and axial loads from either direction in versatile designs that permit relatively high-speed operation.

In addition to standard single-row deep groove bearings, Timken offers special designs, including a maximum capacity series and an extra large (XLS) radial series bearing.

Size range: 3 mm


[more](#)

[Specifications](#) | [Dimensions](#) | [Basic Load Ratings](#) | [Factors](#) | [Abutment and Fillet Dimensions](#)

Specifications

Design Units	Metric
d - Bore	70 mm
Ball Type	STEEL

Dimensions



D - Outer Diameter	125 mm 4.9213 in
Bearing Width	24 mm 0.9449 in

Basic Load Ratings

Ce - Dynamic Radial Rating¹	94302 N 21200 lbf
C0 - Static Radial Rating	70282 N 15800 lbf

Factors

Limiting Speed (Grease)	2560 rpm
Limiting Speed (Oil)	3080 rpm

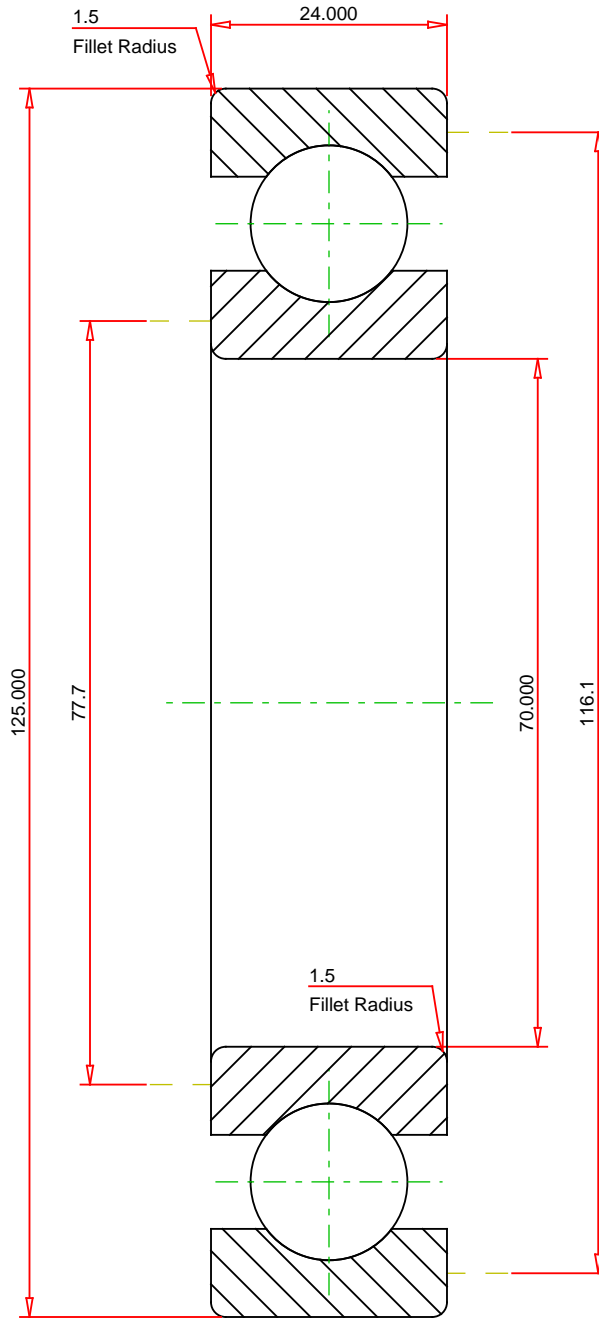
Abutment and Fillet Dimensions

R - Inner Ring "To Clear" Radius²	1.5 mm 0.059 in
r - Outer Ring "To Clear" Radius³	1.5 mm 0.059 in
da - Inner Ring Backing Diameter	77.7 mm 3.060 in
Da - Outer Ring Backing Diameter	116.10 mm 4.5700 in

¹ Based on 10^6 revolutions of calculated fatigue life.

² Maximum housing fillet radius that bearing corners will clear.

³ Maximum shaft fillet radius that bearing corners will clear.



METRIC UNITS

Number of Balls Per Row 16
 Bearing Weight 1.225 kg

TIMKEN®

THE TIMKEN COMPANY
 NORTH CANTON, OHIO USA

214W
 Fafnir® Maximum Capacity Ball Bearings (200W, 300W)

Dynamic Radial Rating 94302 N
 Static Radial Rating 70282 N

Every reasonable effort has been made to ensure the accuracy of the information contained in this writing, but no liability is accepted for errors, omissions or for any other reason.

FOR DISCUSSION ONLY