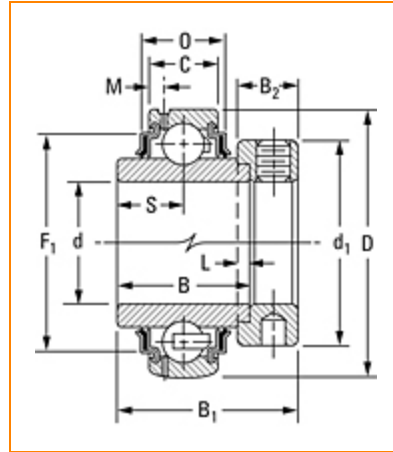


TIMKEN**The Timken Company**

4500 Mt Pleasant St. NW

N. Canton, OH 44720

Phone: (234) 262-3000**E-Mail:** CustomerCAD@timken.com • **Web site:** www.timken.com**Part Number G1108KRRB, Fafnir® Eccentric Locking Collar Ball Bearings**
[Specifications](#) | [Dimensions](#) | [Basic Load Ratings](#)
Specifications

Manufacturing Part Number	G1108KRRB + COL
Series	Industrial
Shaft Size d	1 1/2 in
Bore Type	Cylindrical bore
Bearing Type	Ball Bearing
Material	Bearing Steel
Lubrication Type	Relubricatable
O.D. Type	Spherical OD
Sub Series	G1...KRRB
Seal Type	Shroud Seal

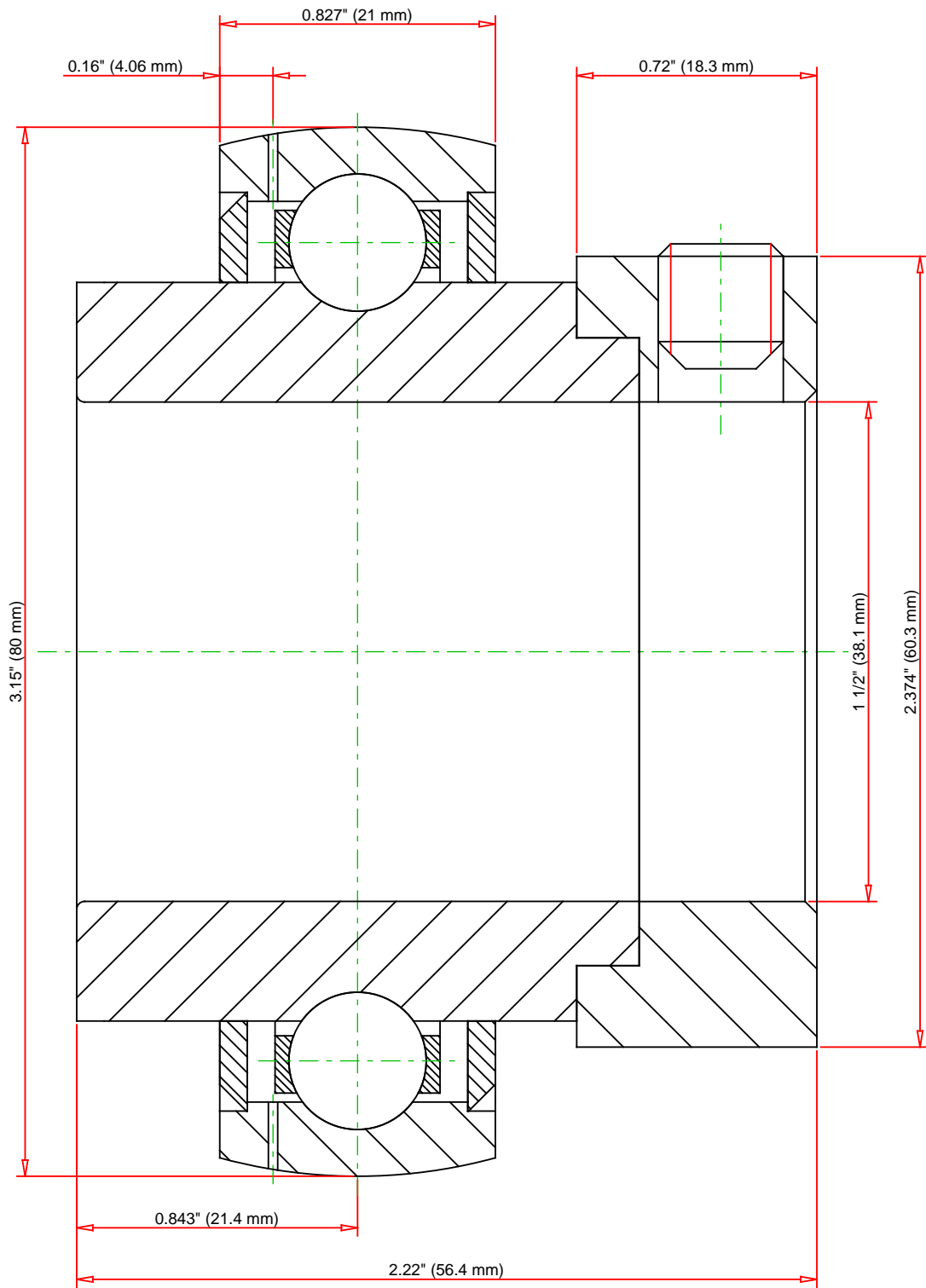


Dimensions

Outside Diameter D	3.15 in 80 mm
Inner Ring Width B	1.687 in 42.86 mm
Outside Ring Width C	0.827 in 21 mm
Radius r	0.024 in 0.6 mm
Center of Bearing from End S	0.843 in 21.4 mm
Set Screw Size	3/8-16
Number of Set Screws	2
Angle between Set Screws	90°
Dimension d1	2.374 in 60.3 mm
Dimension M	0.16 in 4.06 mm
Dimension B1	2.22 in 56.4 mm
Dimension B2	0.72 in 18.3 mm

Basic Load Ratings

Static Load Rating	4460 lbf 19800 N
Dynamic Load Rating	8130 lbf 36200 N



Weight	0.5 lb	0.2 kg
--------	--------	--------

TIMKEN®

THE TIMKEN COMPANY
NORTH CANTON, OHIO USA

G1108KRRB
Fafnir® Eccentric Locking Collar Ball Bearings

Static Load Rating	4460 lbf	19800 N
Dynamic Load Rating	8130 lbf	36200 N

Every reasonable effort has been made to ensure the accuracy of the information contained in this writing, but no liability is accepted for errors, omissions or for any other reason.

FOR DISCUSSION ONLY