


**The Timken Company**

4500 Mt Pleasant St. NW

N. Canton, OH 44720

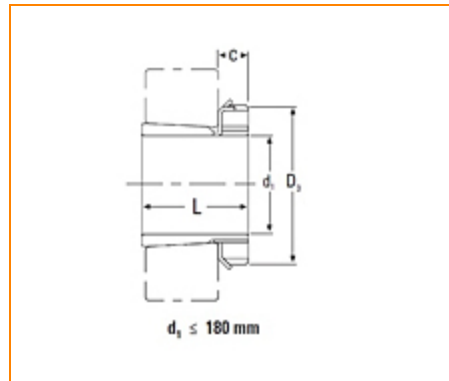
**Phone:** (234) 262-3000

**E-Mail:** [CustomerCAD@timken.com](mailto:CustomerCAD@timken.com) • **Web site:** [www.timken.com](http://www.timken.com)

## Part Number H2320, Metric H Adapter Sleeve

- Safe and effective tapered bore bearing assembly.
- Includes mounting sleeve, locknut and lockwasher or lockplate.
- Other dimensions may be available, consult your Timken sales representative.

\* Adapters with a C1 dimension use a lockplate as the locking device as shown in the illustration; otherwise, a lockwasher is used as the locking device.

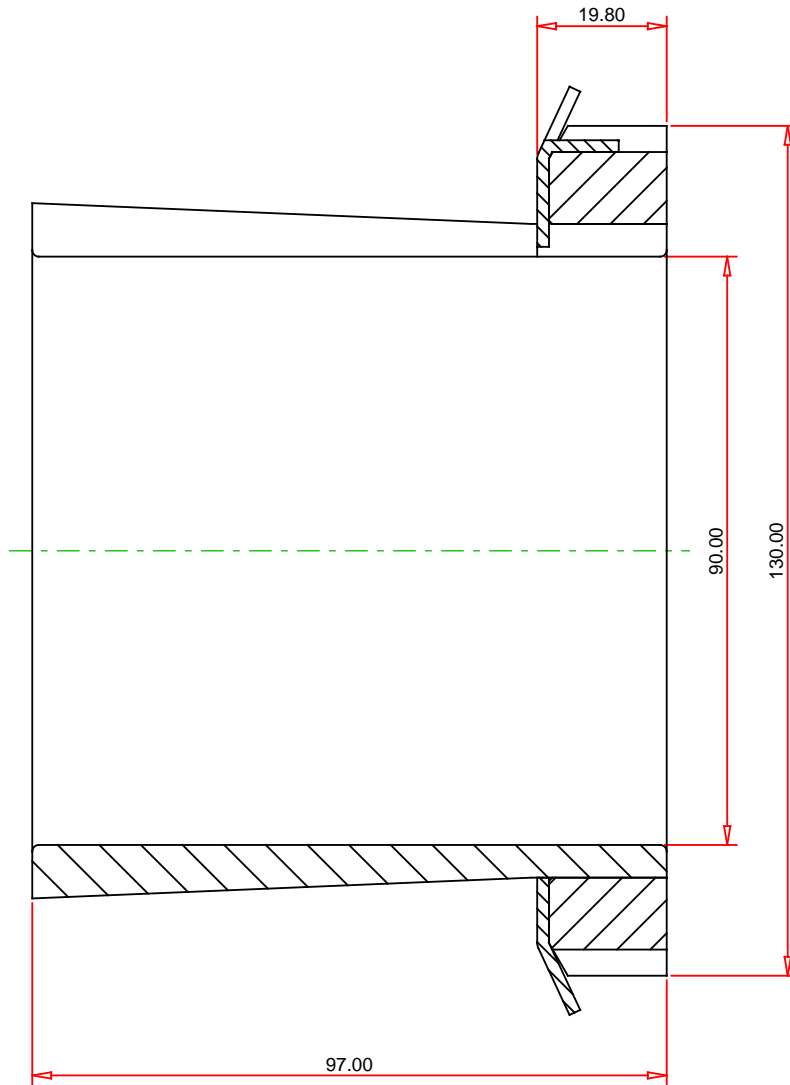


### Specifications

<b>d<sub>1</sub></b>	90 mm
<b>L</b>	97 mm
<b>C<sup>1</sup></b>	20 mm
<b>Thread G</b>	M100x2
<b>D<sub>3</sub></b>	130 mm
<b>Locknut</b>	KM20
<b>Lockwasher and Lockplates</b>	MB20
<b>Appropriate Hydraulic Nut</b>	HMV20



<sup>1</sup> Adapters with a C1 dimension use a lockplate as the locking device as shown in the illustration; otherwise, a lockwasher is used as the locking device.



METRIC UNITS

H2320  
Metric H Adapter Sleeve

**TIMKEN**®

**THE TIMKEN COMPANY**  
NORTH CANTON, OHIO USA