



The Timken Company

4500 Mt Pleasant St. NW

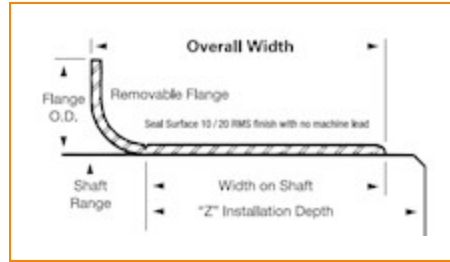
N. Canton, OH 44720

Phone: (234) 262-3000

E-Mail: CustomerCAD@timken.com • **Web site:** www.timken.com

Part Number 99210, Redi Sleeves

Redi Sleeves



[Specifications](#) | [Dimensions](#)

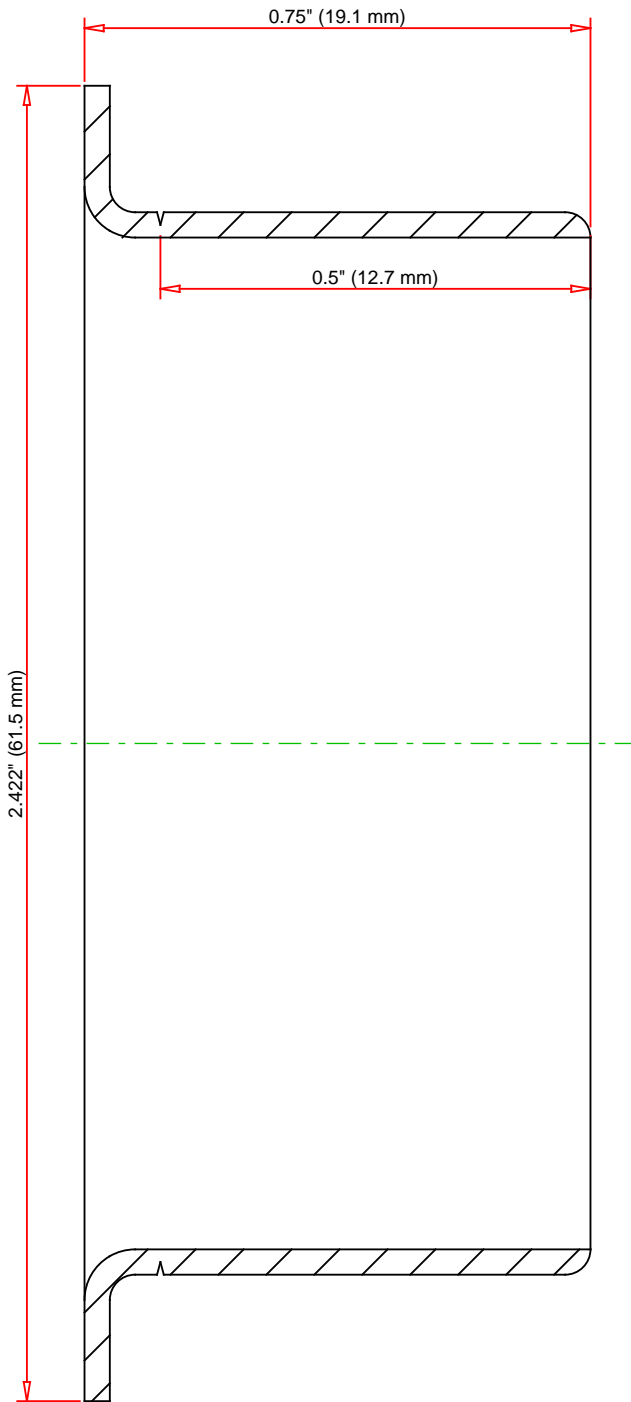
Specifications

Shaft Size Maximum	2.128 in 54.051 mm
Shaft Size Minimum	2.123 in 53.924 mm
Flanged Outside Diameter	2.422 in 61.519 mm
Installation Depth	1.281 in 32.537 mm
Width on Shaft	0.5 in 12.7 mm
Material	Stainless steel
Inch/Metric	Inch



Dimensions

Overall Width	0.75 in 19.05 mm
----------------------	---------------------



DIMENSIONS ACCURATE
DRAWINGS MAY NOT LOOK PROPORTIONAL

IMPERIAL UNITS

TIMKEN[®]

99210
Redi Sleeves

THE TIMKEN COMPANY
NORTH CANTON, OHIO USA

Every reasonable effort has been made to ensure the accuracy of the information contained in this writing, but no liability is accepted for errors, omissions or for any other reason.

FOR DISCUSSION ONLY