



The Timken Company

4500 Mt Pleasant St. NW

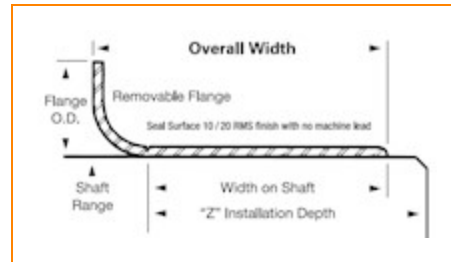
N. Canton, OH 44720

Phone: (234) 262-3000

E-Mail: CustomerCAD@timken.com • **Web site:** www.timken.com

Part Number 99230, Redi Sleeves

Redi Sleeves



[Specifications](#) | [Dimensions](#)

Specifications

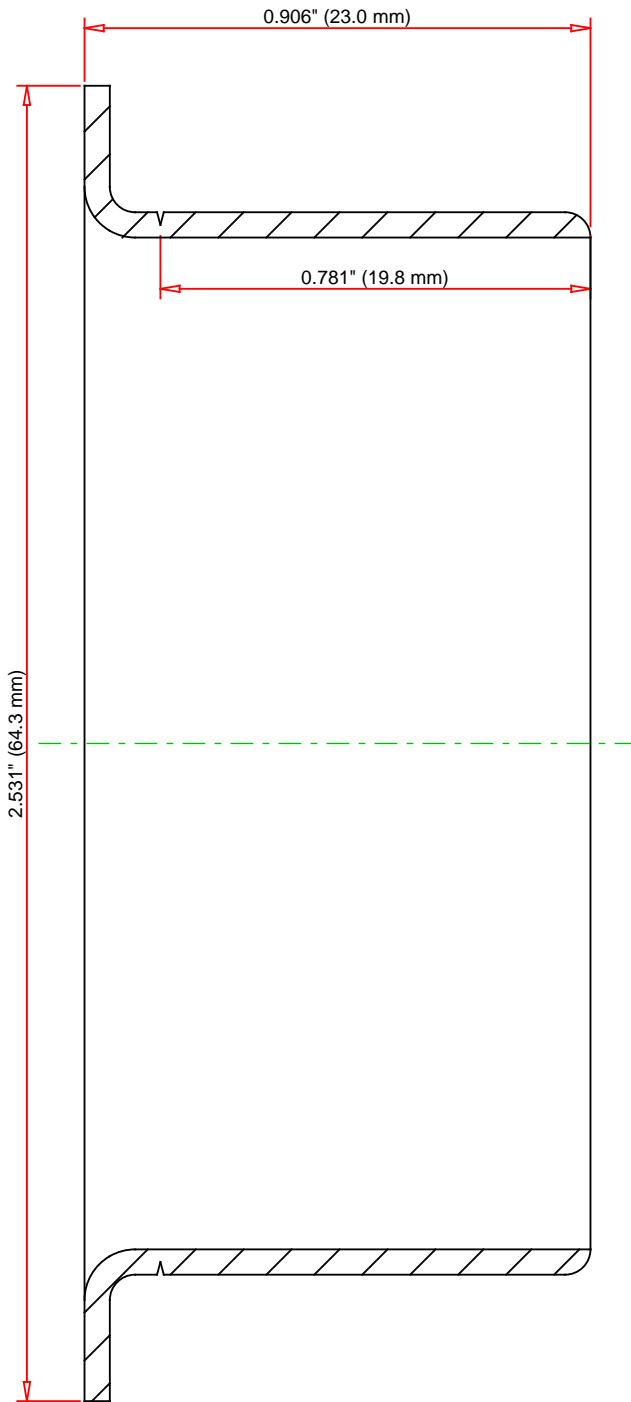
Shaft Size Maximum	56.718 mm
Shaft Size Minimum	56.566 mm
Flanged Outside Diameter	64.287 mm
Installation Depth	31.75 mm
Width on Shaft	19.837 mm
Material	Stainless steel
Inch/Metric	Inch

Dimensions



Overall Width

23.012 mm



DIMENSIONS ACCURATE
DRAWINGS MAY NOT LOOK PROPORTIONAL

IMPERIAL UNITS

TIMKEN®

99230

Redi Sleeves

THE TIMKEN COMPANY
NORTH CANTON, OHIO USA

Every reasonable effort has been made to ensure the accuracy of the information contained in this writing, but no liability is accepted for errors, omissions or for any other reason.

FOR DISCUSSION ONLY