



The Timken Company

4500 Mt Pleasant St. NW

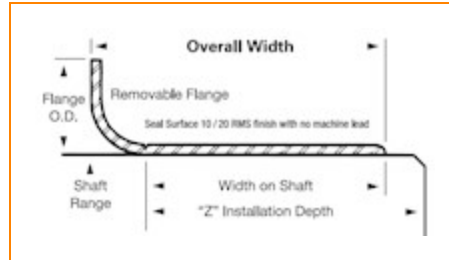
N. Canton, OH 44720

Phone: (234) 262-3000

E-Mail: CustomerCAD@timken.com • **Web site:** www.timken.com

Part Number 99250, Redi Sleeves

Redi Sleeves



[Specifications](#) | [Dimensions](#)

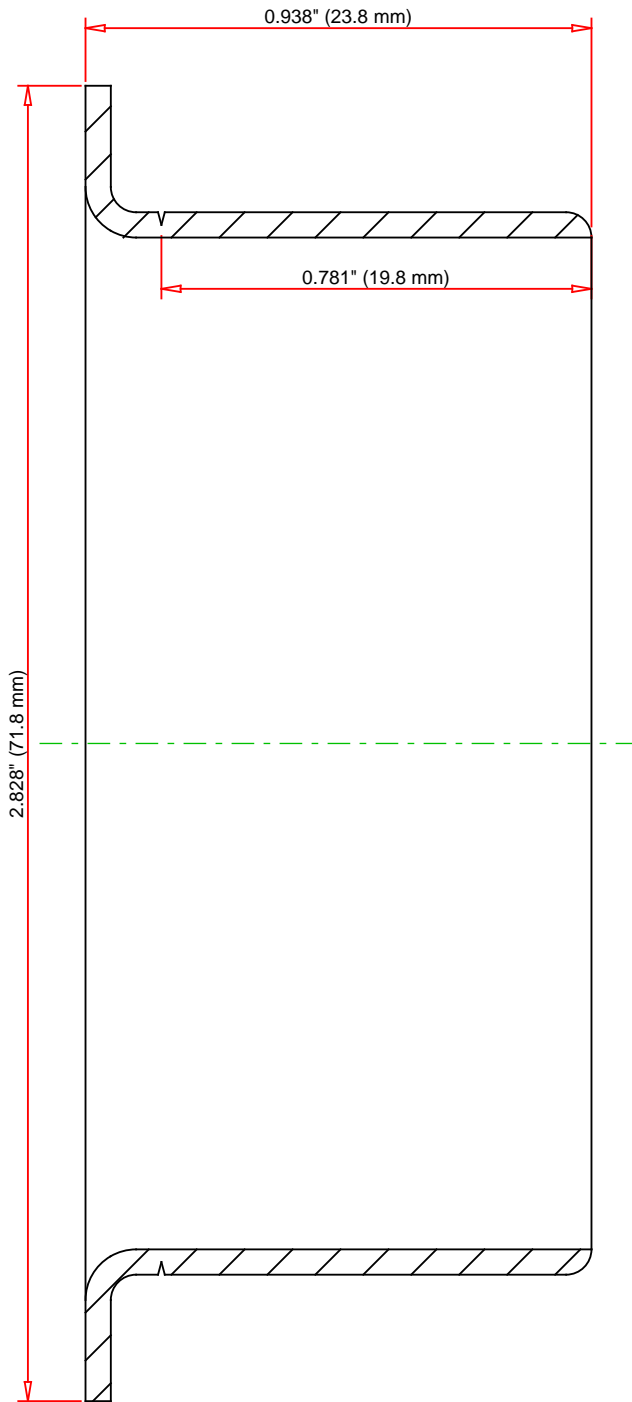
Specifications

Shaft Size Maximum	2.506 in 63.652 mm
Shaft Size Minimum	2.5 in 63.5 mm
Flanged Outside Diameter	2.828 in 71.831 mm
Installation Depth	1.375 in 34.925 mm
Width on Shaft	0.781 in 19.837 mm
Material	Stainless steel
Inch/Metric	Inch



Dimensions

Overall Width	0.938 in 23.825 mm
----------------------	-----------------------



DIMENSIONS ACCURATE
DRAWINGS MAY NOT LOOK PROPORTIONAL

IMPERIAL UNITS

TIMKEN®

99250
Redi Sleeves

THE TIMKEN COMPANY
NORTH CANTON, OHIO USA

Every reasonable effort has been made to ensure the accuracy of the information contained in this writing, but no liability is accepted for errors, omissions or for any other reason.

FOR DISCUSSION ONLY