



The Timken Company

4500 Mt Pleasant St. NW

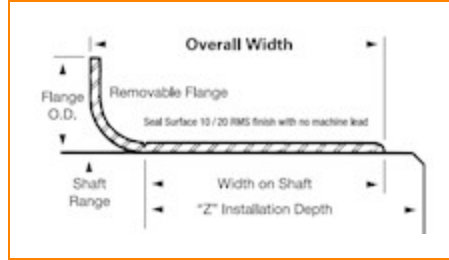
N. Canton, OH 44720

Phone: (234) 262-3000

E-Mail: CustomerCAD@timken.com • **Web site:** www.timken.com

Part Number 99293, Redi Sleeves

Redi Sleeves



[Specifications](#) | [Dimensions](#)

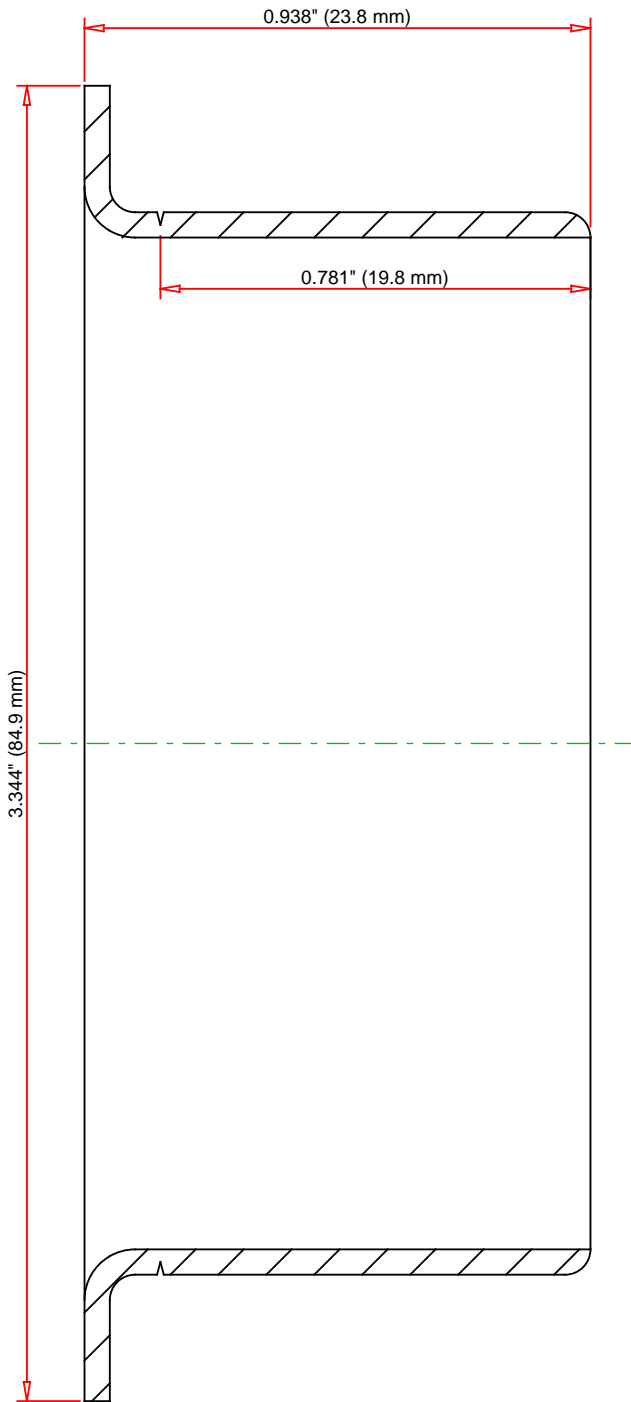
Specifications

Shaft Size Maximum	2.943 in 74.752 mm
Shaft Size Minimum	2.937 in 74.6 mm
Flanged Outside Diameter	3.344 in 84.938 mm
Installation Depth	1.25 in 31.75 mm
Width on Shaft	0.781 in 19.837 mm
Material	Stainless steel
Inch/Metric	Inch



Dimensions

Overall Width	0.938 in 23.825 mm
----------------------	-----------------------



DIMENSIONS ACCURATE
DRAWINGS MAY NOT LOOK PROPORTIONAL

IMPERIAL UNITS

TIMKEN®

99293

Redi Sleeves

THE TIMKEN COMPANY
NORTH CANTON, OHIO USA

Every reasonable effort has been made to ensure the accuracy of the information contained in this writing, but no liability is accepted for errors, omissions or for any other reason.

FOR DISCUSSION ONLY