



**The Timken Company**

4500 Mt Pleasant St. NW

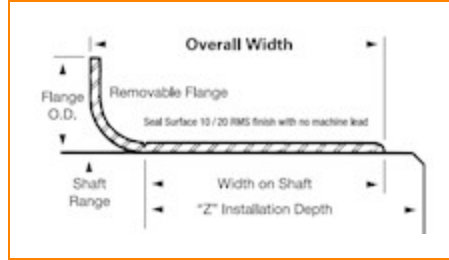
N. Canton, OH 44720

**Phone:** (234) 262-3000

**E-Mail:** [CustomerCAD@timken.com](mailto:CustomerCAD@timken.com) • **Web site:** [www.timken.com](http://www.timken.com)

## Part Number 99367, Redi Sleeves

Redi Sleeves



[Specifications](#) | [Dimensions](#)

### Specifications

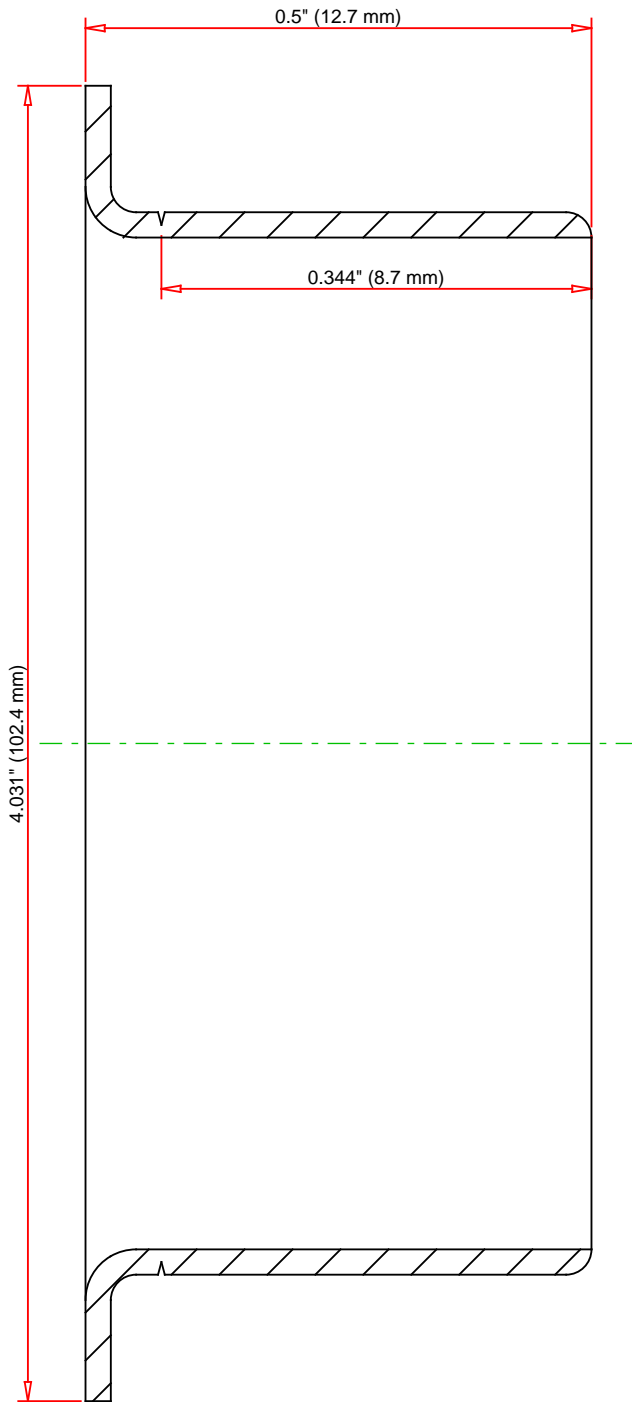
<b>Shaft Size Maximum</b>	3.756 in 95.402 mm
<b>Shaft Size Minimum</b>	3.75 in 95.25 mm
<b>Flanged Outside Diameter</b>	4.031 in 102.387 mm
<b>Installation Depth</b>	1.75 in 44.45 mm
<b>Width on Shaft</b>	0.344 in 8.738 mm
<b>Material</b>	Stainless steel
<b>Inch/Metric</b>	Inch



## Dimensions

**Overall Width**

0.5 in  
12.7 mm



DIMENSIONS ACCURATE  
DRAWINGS MAY NOT LOOK PROPORTIONAL

IMPERIAL UNITS

**TIMKEN**<sup>®</sup>

99367

Redi Sleeves

**THE TIMKEN COMPANY**  
NORTH CANTON, OHIO USA

Every reasonable effort has been made to ensure the accuracy of the information contained in this writing, but no liability is accepted for errors, omissions or for any other reason.

FOR DISCUSSION ONLY