



The Timken Company

4500 Mt Pleasant St. NW

N. Canton, OH 44720

Phone: (234) 262-3000

E-Mail: CustomerCAD@timken.com • **Web site:** www.timken.com

Part Number RTU1, Fafnir® Take-Up Mounted Bearings Eccentric Locking Collar




[Specifications](#) | [Dimensions](#) | [Basic Load Ratings](#)

Specifications

Series	Industrial
Shaft Size d	1 in
Bearing Number	G1100KRRB
Seal Type	Shroud Seal
Housing Construction	Take-Up
Alternate Part Name	RTU1

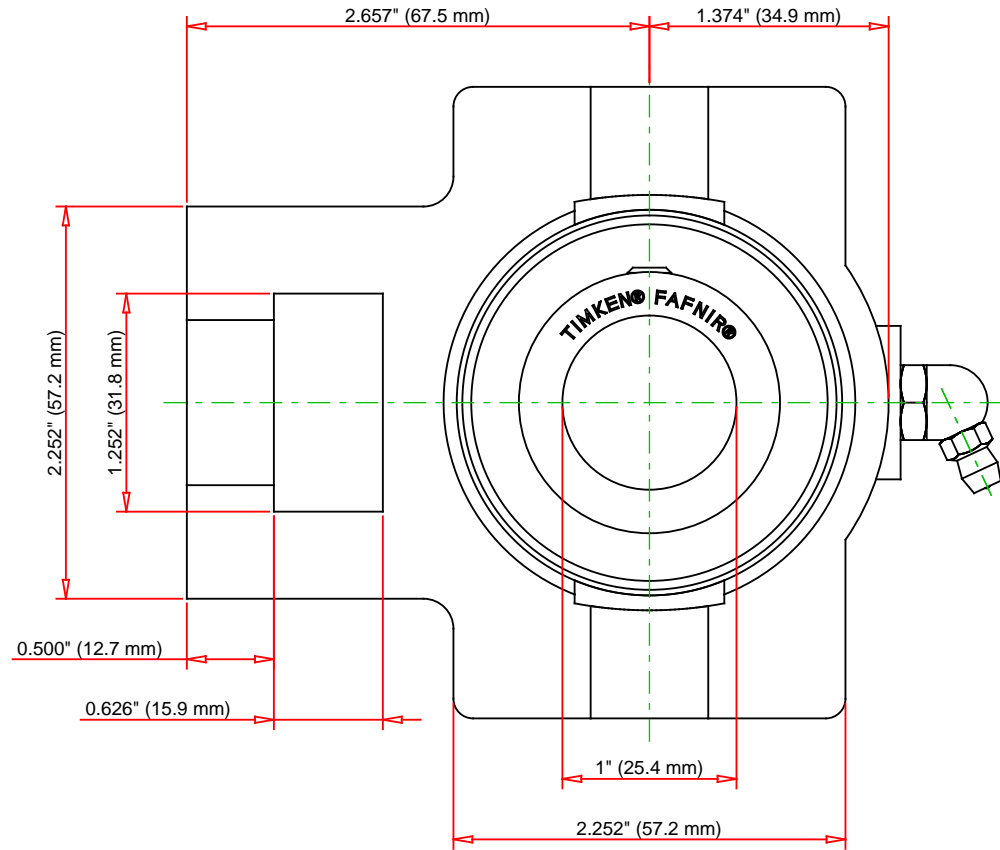
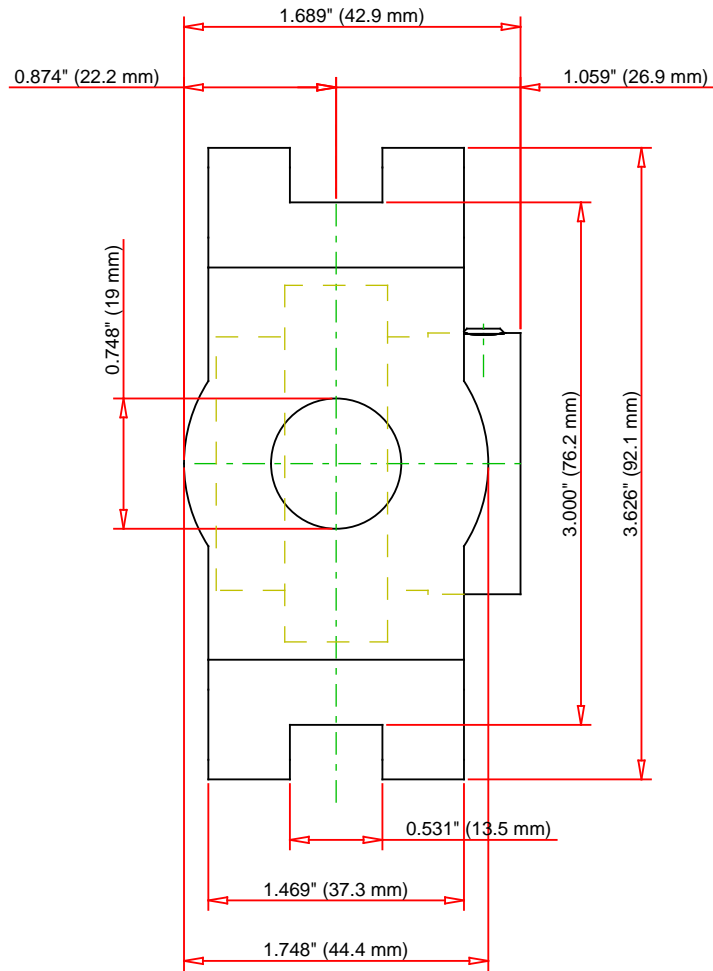
Dimensions

Housing Width A	44.4 mm 1.748 in
 Slot Width A1	13.5 mm 0.531 in

Socket Width A2	37.3 mm 1.469 in
Total Height H	92.1 mm 3.626 in
Pitch Height H1	76.2 mm
Height H2	57.2 mm
Total Length L	102.4 mm 4.031 in
Shaft Length L1	67.5 mm 2.657 in
Dimension L2	12.7 mm
Slot Length L3	57.2 mm 2.252 in
Adjustment Screw Bore N	19 mm 0.748 in
Opening Width N1	15.9 mm 0.626 in
Opening Height N2	31.8 mm 1.252 in
Dimension S1	26.9 mm 1.059 in
Dimension G	42.9 mm 1.689 in
Dimension P	34.9 mm 1.374 in
Dimension T	22.2 mm 0.874 in

Static Load Rating	7800 N 1750 lbf
---------------------------	--------------------

Dynamic Load Rating	15500 N 3490 lbf
----------------------------	---------------------



Bearing Number	G1100KRRB			
Load Ratings - C _r	3490	lbf	15500	N
Load Ratings - C _{0r}	1750	lbf	7800	N
Weight	3.3	lb	1.5	kg

TIMKEN

THE TIMKEN COMPANY
NORTH CANTON, OHIO USA

RTU1

Fafnir® Take-Up Mounted Bearings Eccentric
Locking Collar

Every reasonable effort has been made to ensure the accuracy of the information contained in this writing, but no liability is accepted for errors, omissions or for any other reason.

FOR DISCUSSION ONLY