



The Timken Company

4500 Mt Pleasant St. NW

N. Canton, OH 44720

Phone: (234) 262-3000

E-Mail: CustomerCAD@timken.com • **Web site:** www.timken.com

Part Number YASM2 7/16, Fafnir® Pillow Block Mounted Bearings Setscrew Locking



[Specifications](#) | [Dimensions](#) | [Basic Load Ratings](#)

Specifications

Series	Industrial
Shaft Size d	2 7/16 in
Bearing Type	Ball Bearing
Bearing Number	GYM1207KRRB
Seal Type	Shroud Seal
Housing Construction	Two-Bolt Pillow Block
Alternate Part Name	YASM2 7/16

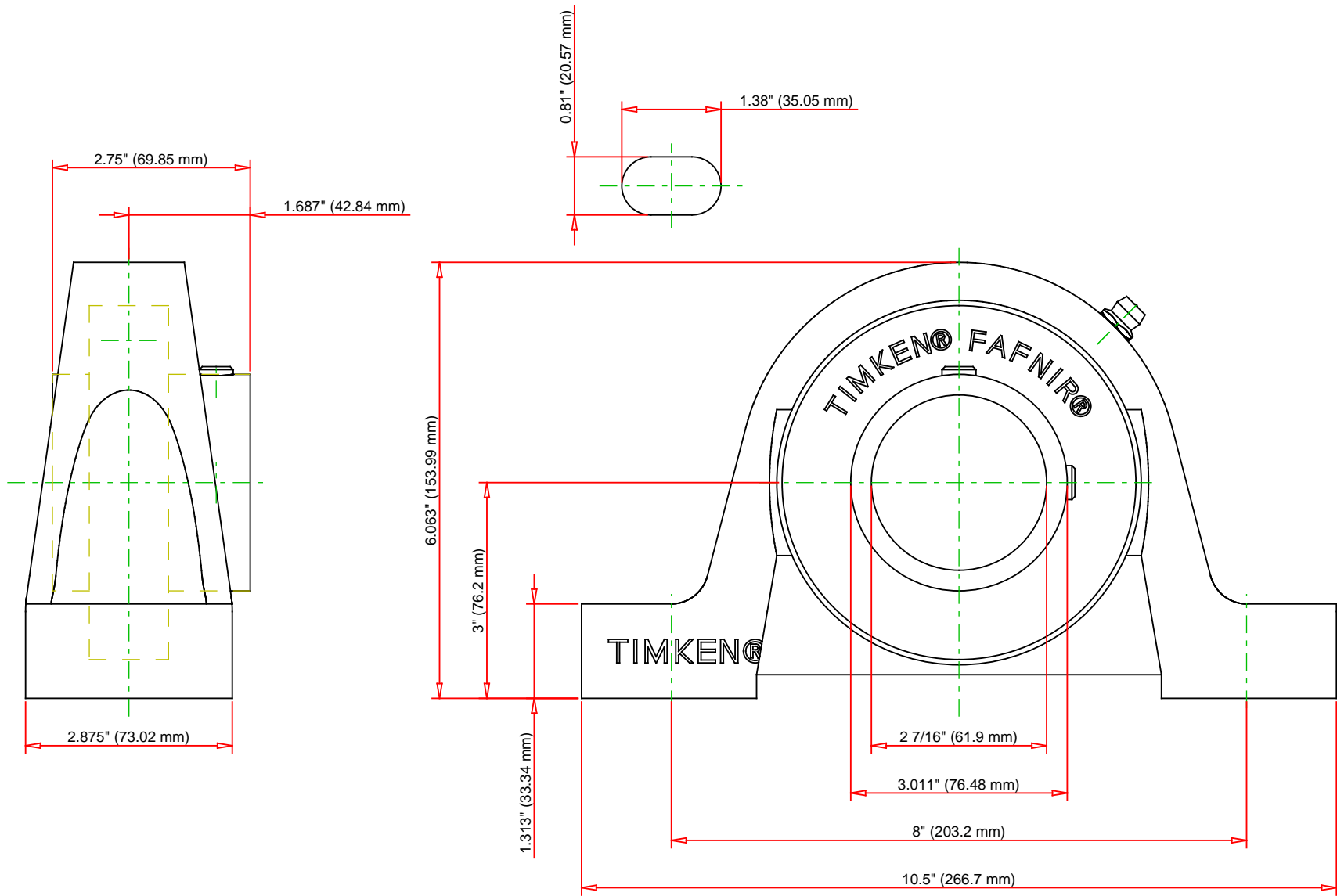
Dimensions



Base to Center Height H	76.2 mm 3 in
Total Length L	266.7 mm 10-1/2 in
Total Width A	73.02 mm 2.875 in
Bolt Hole Spacing J	203.2 mm 8 in
Bolt Hole Width N	20.57 mm 0.81 in
Bolt Hole Length N1	35.05 mm 1.38 in
Foot Height H1	33.34 mm
Total Height H2	153.99 mm 6.063 in
Inside Ring Width B	69.85 mm 2.75 in
Dimension S1	42.84 mm 1.687 in
Dimension F	76.48 mm 3.011 in

Basic Load Ratings

Static Load Rating	44000 N 9890 lbf
Dynamic Load Rating	69000 N 15500 lbf



Bearing Number	GYM1207KRRB			
Load Ratings - C _r	15500	lbf	69000	N
Load Ratings - C _{0r}	9890	lbf	44000	N
Weight	16.56	lb	7.51	kg
Bolt Size	M12x1.75			

TIMKEN®

THE TIMKEN COMPANY
NORTH CANTON, OHIO USA

YASM2 7/16

Fafnir® Pillow Block Mounted Bearings Setscrew Locking

Every reasonable effort has been made to ensure the accuracy of the information contained in this writing, but no liability is accepted for errors, omissions or for any other reason.

FOR DISCUSSION ONLY