



**The Timken Company**

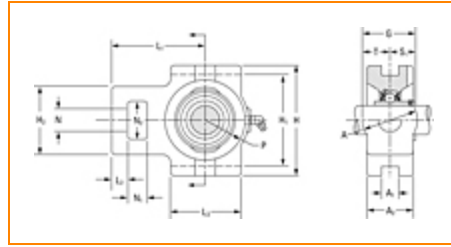
4500 Mt Pleasant St. NW

N. Canton, OH 44720

**Phone:** (234) 262-3000

**E-Mail:** [CustomerCAD@timken.com](mailto:CustomerCAD@timken.com) • **Web site:** [www.timken.com](http://www.timken.com)

## Part Number YTU2 7/16, Fafnir® Take-Up Mounted Bearings Setscrew Locking



[Specifications](#) | [Dimensions](#) | [Basic Load Ratings](#)

### Specifications

<b>Series</b>	Industrial
<b>Shaft Size d</b>	2 7/16 in
<b>Bearing Number</b>	GY1207KRRB
<b>Seal Type</b>	Shroud Seal
<b>Housing Construction</b>	Take-Up
<b>Alternate Part Name</b>	YTU2 7/16

### Dimensions

<b>Housing Width A</b>	69.8 mm 2.748 in
<b>lot Width A1</b>	27 mm 1.063 in



<b>Socket Width A2</b>	52.4 mm 2.063 in
<b>Total Height H</b>	149.2 mm 5.874 in
<b>Pitch Height H1</b>	129.4 mm
<b>Height H2</b>	101.6 mm
<b>Total Length L</b>	189 mm 7.441 in
<b>Shaft Length L1</b>	119.9 mm 4.72 in
<b>Dimension L2</b>	19 mm
<b>Slot Length L3</b>	101.6 mm 4 in
<b>Adjustment Screw Bore N</b>	34.9 mm 1.374 in
<b>Opening Width N1</b>	31.8 mm 1.252 in
<b>Opening Height N2</b>	63.5 mm 2.5 in
<b>Inside Ring Width B</b>	65.07 mm 2.562 in
<b>Dimension S1</b>	39.67 mm 1.562 in
<b>Dimension G</b>	74.6 mm 2.937 in
<b>Dimension P</b>	69.1 mm 2.72 in
<b>Dimension T</b>	34.9 mm 1.374 in

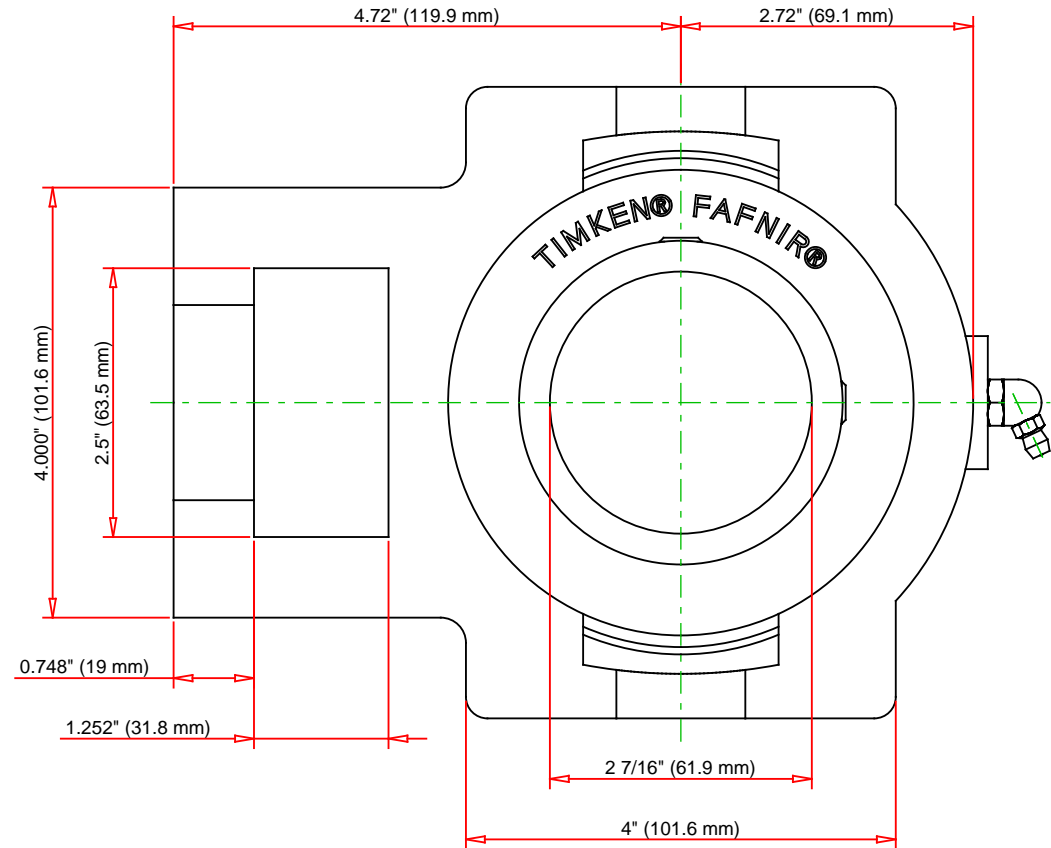
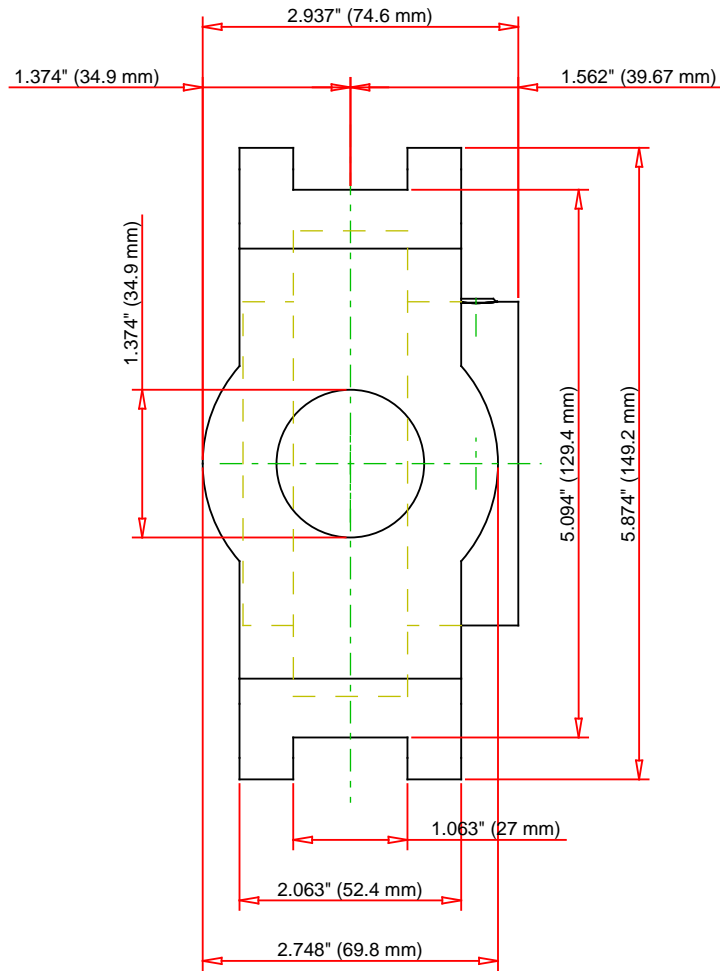
## Basic Load Ratings

**Static Load Rating**

35900 N  
8080 lbf

**Dynamic Load Rating**

58200 N  
13100 lbf



Bearing Number	GY1207KRRB			
Load Ratings - C <sub>r</sub>	13100	lbf	58200	N
Load Ratings - C <sub>0r</sub>	8080	lbf	35900	N
Weight	13	lb	5.9	kg
Bolt Size	M10x1.5			

**TIMKEN**

THE TIMKEN COMPANY  
NORTH CANTON, OHIO USA

**YTU2 7/16**  
Fafnir® Take-Up Mounted Bearings Setscrew Locking

Every reasonable effort has been made to ensure the accuracy of the information contained in this writing, but no liability is accepted for errors, omissions or for any other reason.

**FOR DISCUSSION ONLY**