


The Timken Company

4500 Mt Pleasant St. NW

N. Canton, OH 44720

Phone: (234) 262-3000

E-Mail: CustomerCAD@timken.com • **Web site:** www.timken.com

Part Number 202KDD, Fafnir® Deep Groove Ball Bearings (9100K, 200K, 300K)

Radial ball bearings consist of an inner and outer ring with a cage containing a complement of precision balls. The standard Conrad-type bearing has a deep-groove construction capable of handling radial and axial loads from either direction in versatile designs that permit relatively high-speed operation.

In addition to standard single-row deep groove bearings, Timken offers special designs, including a maximum capacity series and an extra large (XLS) radial series bearing.

Size range: 3 mm


[more](#)

[Specifications](#) | [Dimensions](#) | [Basic Load Ratings](#) | [Factors](#) | [Abutment and Fillet Dimensions](#)

Specifications

Design Units	Metric
d - Bore	15 mm
Ball Type	STEEL
Manufacturing Part Number	P202KDD Z3 FS50000

Dimensions



D - Outer Diameter	35 mm 1.378 in
Bearing Width	11 mm 0.4331 in

Basic Load Ratings

Ce - Dynamic Radial Rating¹	9390 N 2110 lbf
C0 - Static Radial Rating	4090 N 920 lbf

Factors

Limiting Speed (Grease)	11999 rpm
Limiting Speed (Oil)	13999 rpm

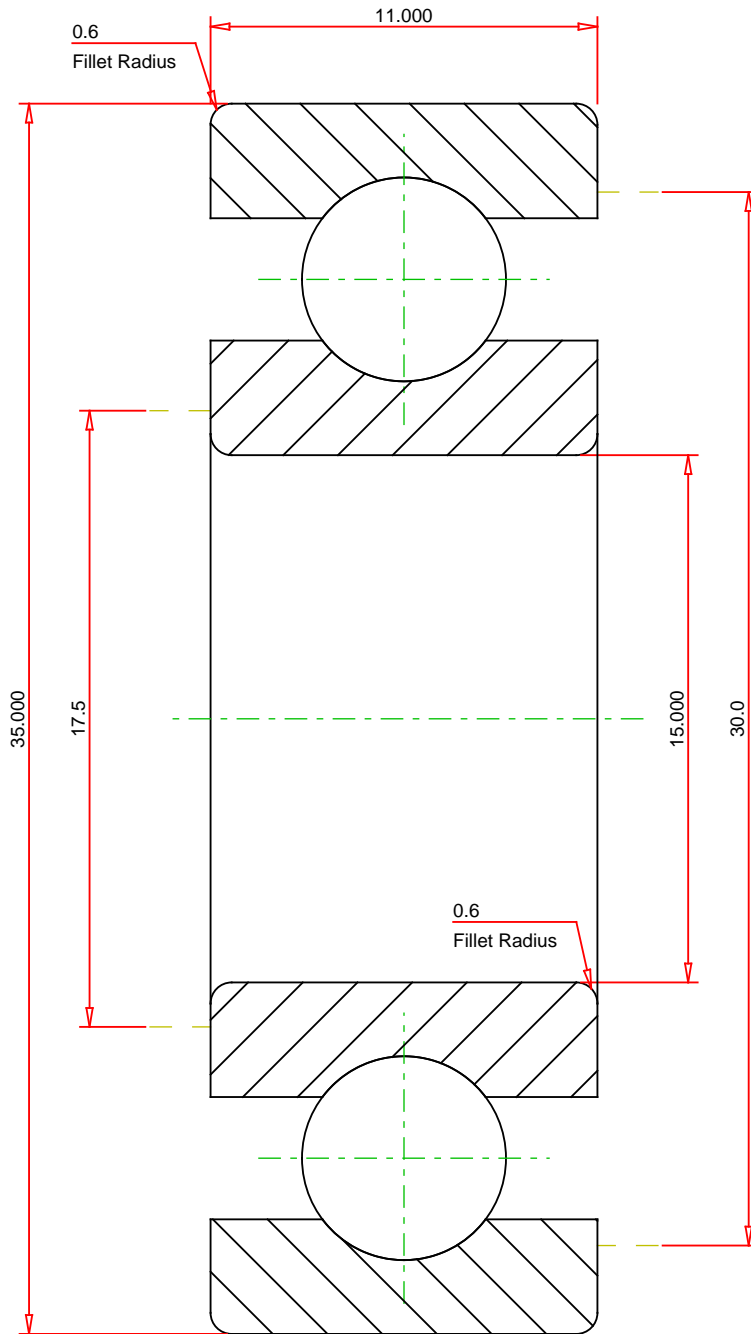
Abutment and Fillet Dimensions

R - Inner Ring "To Clear" Radius²	0.6 mm 0.024 in
r - Outer Ring "To Clear" Radius³	0.6 mm 0.024 in
da - Inner Ring Backing Diameter	17.53 mm 0.690 in
Da - Outer Ring Backing Diameter	29.97 mm 1.1800 in

¹ Based on 10^6 revolutions of calculated fatigue life.

² Maximum housing fillet radius that bearing corners will clear.

³ Maximum shaft fillet radius that bearing corners will clear.



METRIC UNITS

Number of Balls Per Row 8
 Bearing Weight 0.045 kg

TIMKEN®

THE TIMKEN COMPANY
 NORTH CANTON, OHIO USA

202KDD
 Fafnir® Deep Groove Ball Bearings (9100K, 200K, 300K)

Dynamic Radial Rating 9390 N
 Static Radial Rating 4090 N

Every reasonable effort has been made to ensure the accuracy of the information contained in this writing, but no liability is accepted for errors, omissions or for any other reason.

FOR DISCUSSION ONLY