



The Timken Company

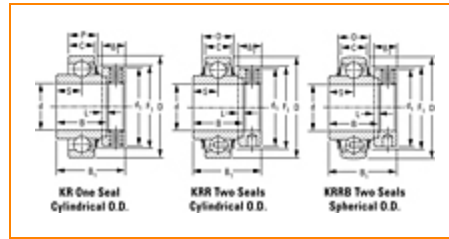
4500 Mt Pleasant St. NW

N. Canton, OH 44720

Phone: (234) 262-3000

E-Mail: CustomerCAD@timken.com • **Web site:** www.timken.com

Part Number 1111KRR, Fafnir® Eccentric Locking Collar Ball Bearings



[Specifications](#) | [Dimensions](#) | [Basic Load Ratings](#)

Specifications

Manufacturing Part Number 1111KRR + COL

Series Industrial

Shaft Size d 1 11/16 in

Bore Type Cylindrical bore

Bearing Type Ball Bearing

Material Bearing Steel

Lubrication Type Non-Relubricatable

O.D. Type Cylindrical OD

Sub Series 1..KRR

Seal Type Shroud Seal

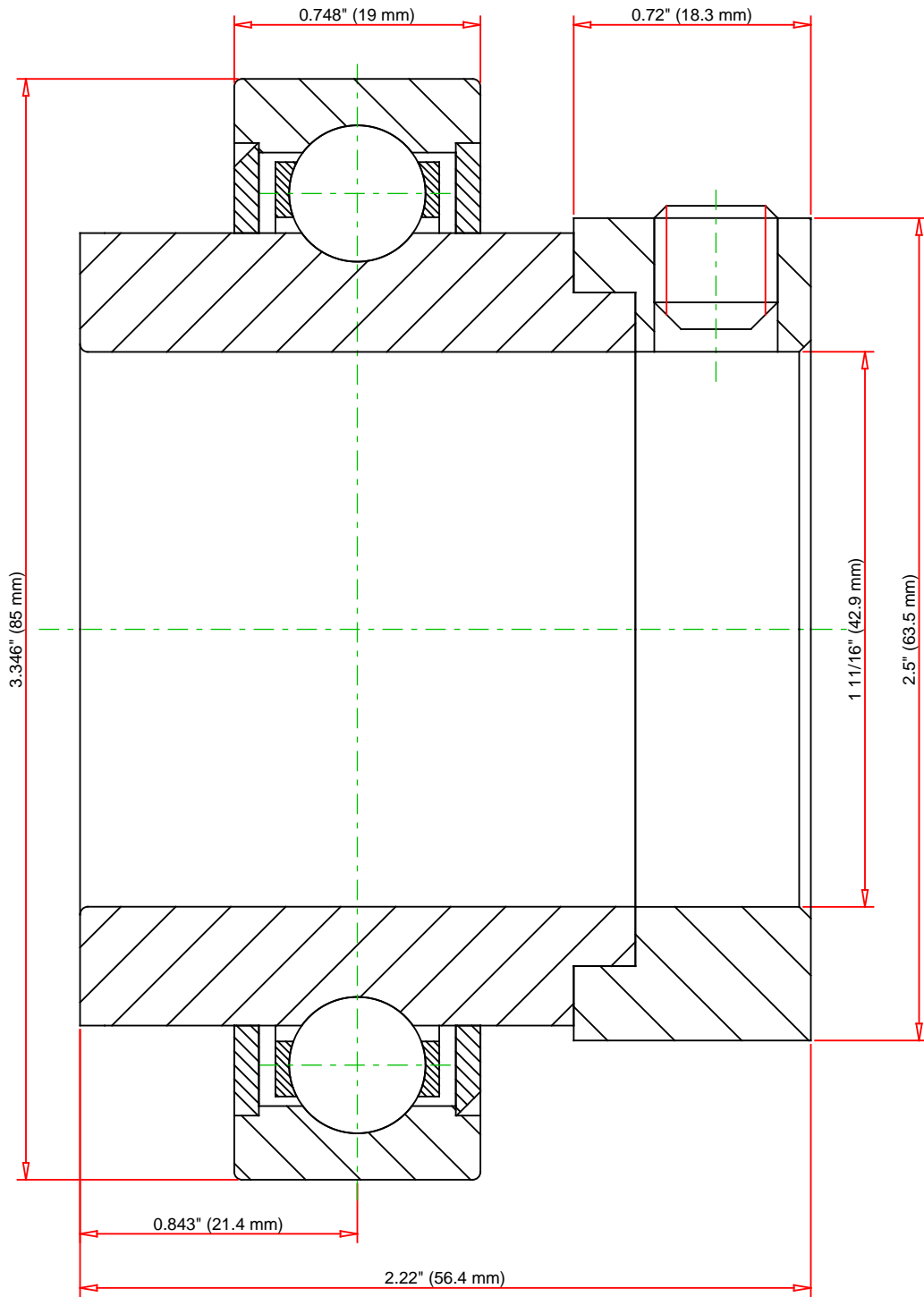


Dimensions

Outside Diameter D	3.346 in 85 mm
Inner Ring Width B	1.687 in 42.86 mm
Outside Ring Width C	0.748 in 19 mm
Radius r	0.024 in 0.6 mm
Center of Bearing from End S	0.843 in 21.4 mm
Set Screw Size	3/8-16
Number of Set Screws	2
Angle between Set Screws	90 °
Dimension d1	2.5 in 63.5 mm
Dimension B1	2.22 in 56.4 mm
Dimension B2	0.72 in 18.3 mm

Basic Load Ratings

Static Load Rating	4600 lbf 20500 N
Dynamic Load Rating	8160 lbf 36300 N



Weight	0.5 lb	0.2 kg
--------	--------	--------

TIMKEN®

THE TIMKEN COMPANY
NORTH CANTON, OHIO USA

1111KRR

Fafnir® Eccentric Locking Collar Ball Bearings

Static Load Rating	4600 lbf	20500 N
Dynamic Load Rating	8160 lbf	36300 N

Every reasonable effort has been made to ensure the accuracy of the information contained in this writing, but no liability is accepted for errors, omissions or for any other reason.

FOR DISCUSSION ONLY