


The Timken Company

4500 Mt Pleasant St. NW

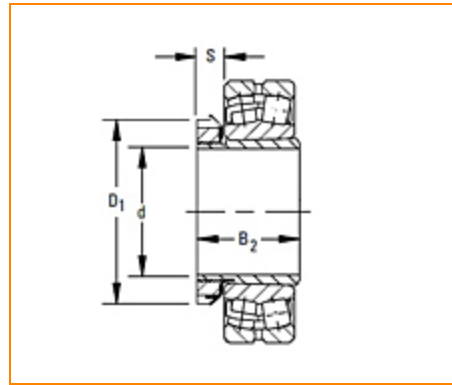
N. Canton, OH 44720

Phone: (234) 262-3000

E-Mail: CustomerCAD@timken.com • **Web site:** www.timken.com

Part Number SNW-3140 x 7 3/16, "SNW/SNP – Pull-Type Sleeve, Locknut, Lockwasher/Lockplate Assemblies"

- The table below shows dimensions for adapter assemblies and components used in the mounting of tapered bore bearings on shafts.
- SNW assembly consists of a sleeve, locknut and lockwasher.
- SNP assembly consists of a sleeve, locknut and lockplate.



[Specifications](#) | [Shaft Dimensions](#) | [Adapter Dimensions](#) | [Accessory Numbers](#)

Specifications

Series	231K
Diameter d	7.1875 in
Bearing Number	23140K
Taper	1:12

Shaft Dimensions


Tolerance¹

-0.005 in

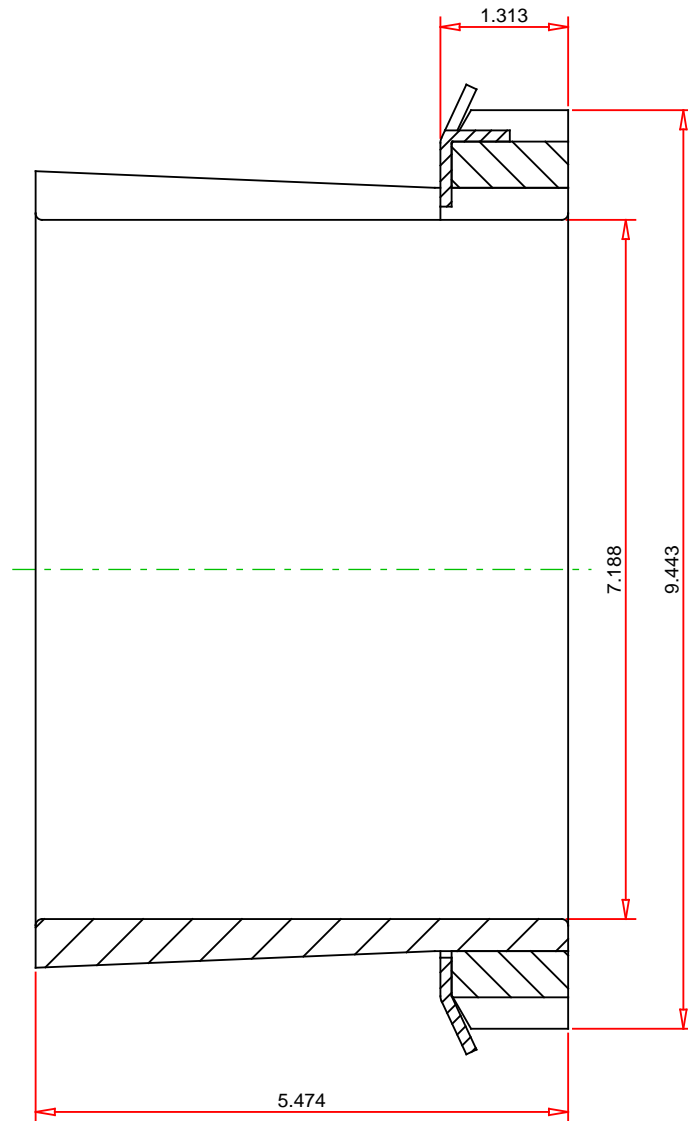
Adapter Dimensions

B₂	5.474 in
S	1.313 in
D₁	9.443 in

Accessory Numbers

Sleeve	S-40
Locknut	N 040
Lockwasher and Lockplates	W 040

¹ Tolerance range is from +0 to value listed.



IMPERIAL UNITS

TIMKEN®

THE TIMKEN COMPANY
NORTH CANTON, OHIO USA

SNW-3140 x 7 3/16
SNW/SNP – Pull-Type Sleeve, Locknut,
Lockwasher/Lockplate Assemblies