


The Timken Company

4500 Mt Pleasant St. NW

N. Canton, OH 44720

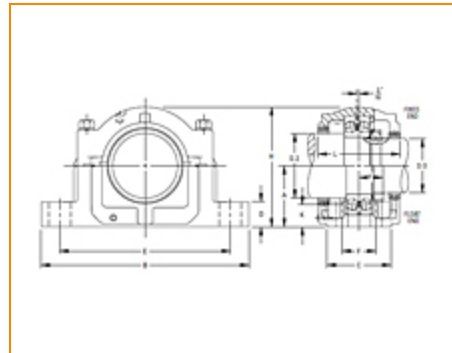
Phone: (234) 262-3000

E-Mail: CustomerCAD@timken.com • **Web site:** www.timken.com

Part Number SAF 22330, Inch Straight Bore Mounting Pillow Block SAF222 and SAF223

Series

- Each assembly includes the housing cap and base, cap bolts, bearing, locknut and lockwasher, stabilizing ring and triple ring seals.
- To order pillow block housing only, use the numbers listed in "Housing Only" column. These units include: cap, base, cap bolts, triple ring seals and stabilizing ring.
- Assembly and pillow blocks described on this page constitute fixed units.
- To order float units, specify part number plus suffix "Float" or "FL".
- If one end closed assembly is required, specify "CL"

[more](#)

[Specifications](#) | [Basic Load Ratings](#) | [Factors](#)

Specifications

Bearing Number	22330
Diameter S-2	6 5/8 in
Diameter S-3	5.7500 in
A	7-1/2 in
	26.75 in



C	7-1/8 in
D	3 in
E Max.	23.625 in
E Min.	20.875 in
F	4-5/8 in
H¹	15.5 in
Oil Level K	2.875 in
L²	9.688 in
Y	3.2656 in
No. of Base Bolts Required	4
Size of Base Bolts Required	1
Bolt Hole Length	2.375 in
Bolt Hole Width	1 in
Locknut	AN30
Lockwasher	W30
Housing Only³	SAF330
Stabilizing Ring 1 Req'd⁴	SR-36-30
Triple Seal 2 Req'd at S-2	LOR151
Triple Seal 2 Req'd at S-3	LOR134
Seal Type	Triple Ring Seal
Full Timken Part Number	SAF22330

C0 - Static Radial Rating	424000 lbf 1890000 N
----------------------------------	-------------------------

C1(2) - Dynamic Radial Rating (Two-Rows)	365000 lbf 1620000 N
---	-------------------------

Factors

e - ISO Factor⁵	0.33
-----------------------------------	------

Y0 - ISO Factor⁶	2.03
------------------------------------	------

Y1 - ISO Factor⁷	2.08
------------------------------------	------

Y2 - ISO Factor⁸	3.09
------------------------------------	------

Reference Thermal Speed Rating (Grease)	1500 rpm
--	----------

Reference Thermal Speed Rating (Oil)⁹	1600 rpm
---	----------

Cg - Geometry Factor¹⁰	0.0884
--	--------

¹ Tolerance -0 to + 0.4 mm (-0 to +1/64 in)

² Tolerance -0 to + 0.4 mm (-0 to +1/64 in)

³ "Housing Only" includes: cap, base, cap bolts, triple ring seals and stabilizing ring as required. When ordering non-standard housing only specify the shaft size.

⁴ Stabilizing ring is used for fixed (FX) block; do not use for float (FL) mounting.

⁵ These factors apply for both inch and metric calculations. Consult your Timken representative for instruction on use.

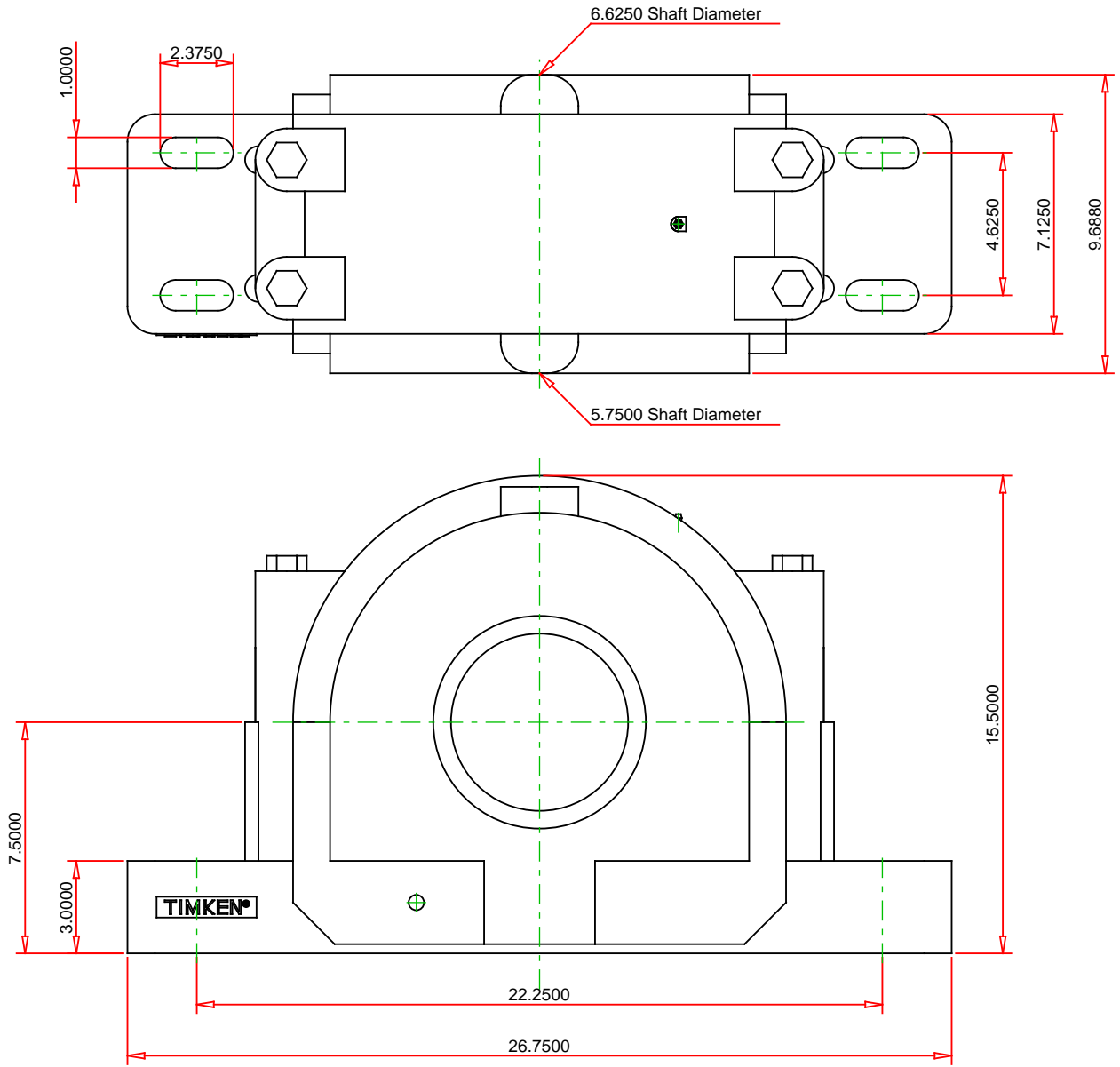
⁶ These factors apply for both inch and metric calculations. See engineering

⁷ These factors apply for both inch and metric calculations. Consult your Timken representative for instruction on use.

⁸ These factors apply for both inch and metric calculations. Consult your Timken representative for instruction on use.

⁹ See thermal speed ratings in the engineering section.

¹⁰ Geometry constant for Lubrication Life Adjustment Factor a3l.



IMPERIAL UNITS

Housing	SAF330
Bearing	22330
Triple Seal at S-2	LOR151
Triple Seal at S-3	LOR134
Stabilizing Ring	SR-36-30
Locknut	AN30
Lockwasher	W30
Bolt Hole Spacing Max.	23.6250
Bolt Hole Spacing Min.	20.8750

TIMKEN®

THE TIMKEN COMPANY
NORTH CANTON, OHIO USA

SAF 22330
PILLOW BLOCK SAF222 AND SAF223

Every reasonable effort has been made to ensure the accuracy of the information contained in this writing, but no liability is accepted for errors, omissions or for any other reason.

FOR DISCUSSION ONLY