



**The Timken Company**

4500 Mt Pleasant St. NW

N. Canton, OH 44720

**Phone:** (234) 262-3000

**E-Mail:** [CustomerCAD@timken.com](mailto:CustomerCAD@timken.com) • **Web site:** [www.timken.com](http://www.timken.com)

## Part Number RTU1 11/16, Fafnir® Take-Up Mounted Bearings Eccentric Locking Collar




[Specifications](#) | [Dimensions](#) | [Basic Load Ratings](#)

### Specifications

<b>Series</b>	Industrial
<b>Shaft Size d</b>	1 11/16 in
<b>Bearing Number</b>	G1111KRRB
<b>Seal Type</b>	Shroud Seal
<b>Housing Construction</b>	Take-Up
<b>Alternate Part Name</b>	RTU1 11/16

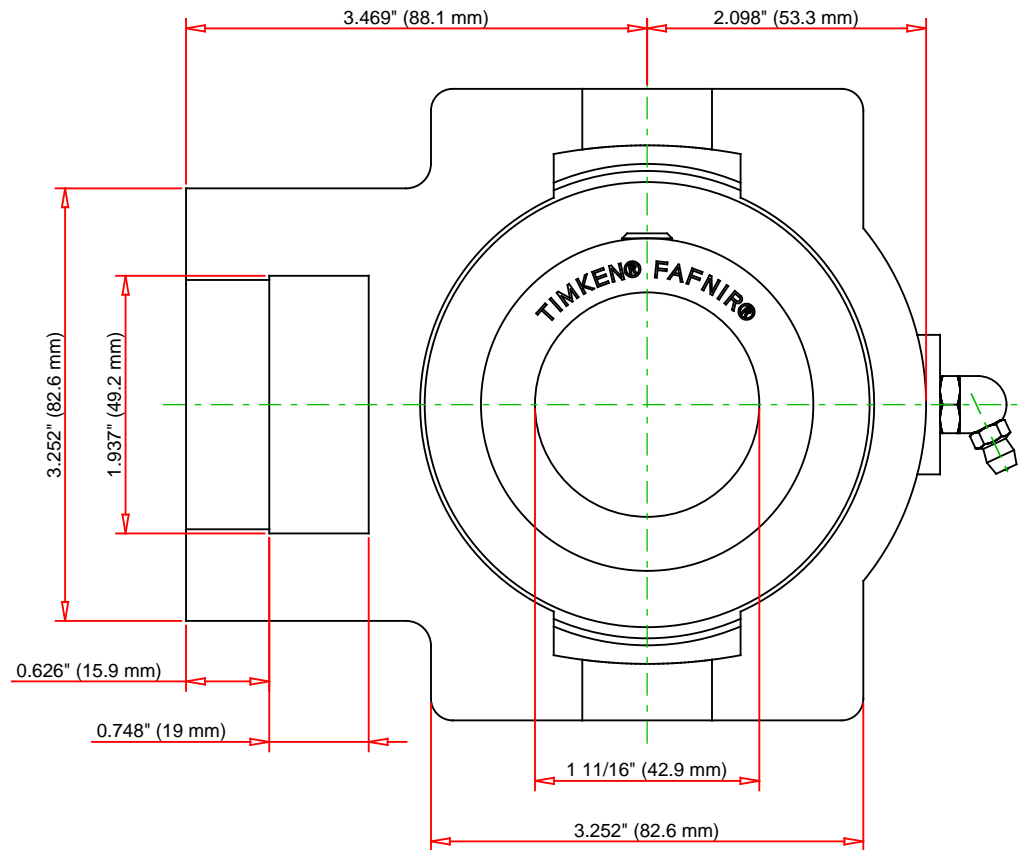
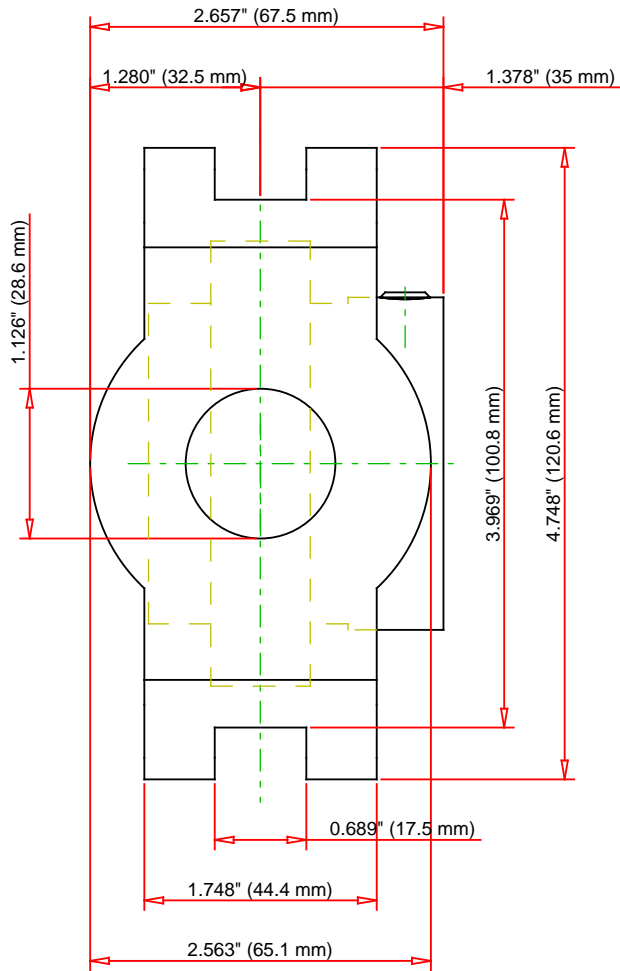
### Dimensions

<b>Housing Width A</b>	65.1 mm 2.563 in
 <b>Slot Width A1</b>	17.5 mm 0.689 in

<b>Socket Width A2</b>	44.4 mm 1.748 in
<b>Total Height H</b>	120.6 mm 4.748 in
<b>Pitch Height H1</b>	100.8 mm
<b>Height H2</b>	82.6 mm
<b>Total Length L</b>	141.4 mm 5.567 in
<b>Shaft Length L1</b>	88.1 mm 3.469 in
<b>Dimension L2</b>	15.9 mm
<b>Slot Length L3</b>	82.6 mm 3.252 in
<b>Adjustment Screw Bore N</b>	28.6 mm 1.126 in
<b>Opening Width N1</b>	19 mm 0.748 in
<b>Opening Height N2</b>	49.2 mm 1.937 in
<b>Dimension S1</b>	35 mm 1.378 in
<b>Dimension G</b>	67.5 mm 2.657 in
<b>Dimension P</b>	53.3 mm 2.098 in
<b>Dimension T</b>	32.5 mm 1.28 in

<b>Static Load Rating</b>	20500 N 4600 lbf
---------------------------	---------------------

<b>Dynamic Load Rating</b>	36300 N 8160 lbf
----------------------------	---------------------



Bearing Number	G1111KRRB			
Load Ratings - C <sub>r</sub>	8160	lbf	36300	N
Load Ratings - C <sub>0r</sub>	4600	lbf	20500	N
Weight	6.97	lb	3.16	kg

**TIMKEN**

THE TIMKEN COMPANY  
NORTH CANTON, OHIO USA

**RTU1 11/16**

Fafnir® Take-Up Mounted Bearings Eccentric  
Locking Collar

Every reasonable effort has been made to ensure the accuracy of the information contained in this writing, but no liability is accepted for errors, omissions or for any other reason.

**FOR DISCUSSION ONLY**