



**The Timken Company**

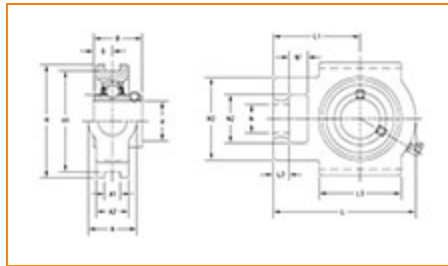
4500 Mt Pleasant St. NW

N. Canton, OH 44720

**Phone:** (234) 262-3000

**E-Mail:** [CustomerCAD@timken.com](mailto:CustomerCAD@timken.com) • **Web site:** [www.timken.com](http://www.timken.com)

## Part Number UCT205-14, UCT 200 Take-Up Mounted Bearings - Set Screw Locking



[Specifications](#) | [Dimensions](#) | [Basic Load Ratings](#)

### Specifications

<b>Bearing Number</b>	UC205-14
<b>Shaft Size d</b>	7/8 in
<b>UPC Code</b>	087796076174
<b>Locking Style</b>	Set Screw Locking
<b>Housing Construction</b>	Take-Up

### Dimensions

<b>Housing Width A</b>	32 mm 1.26 in
------------------------	------------------



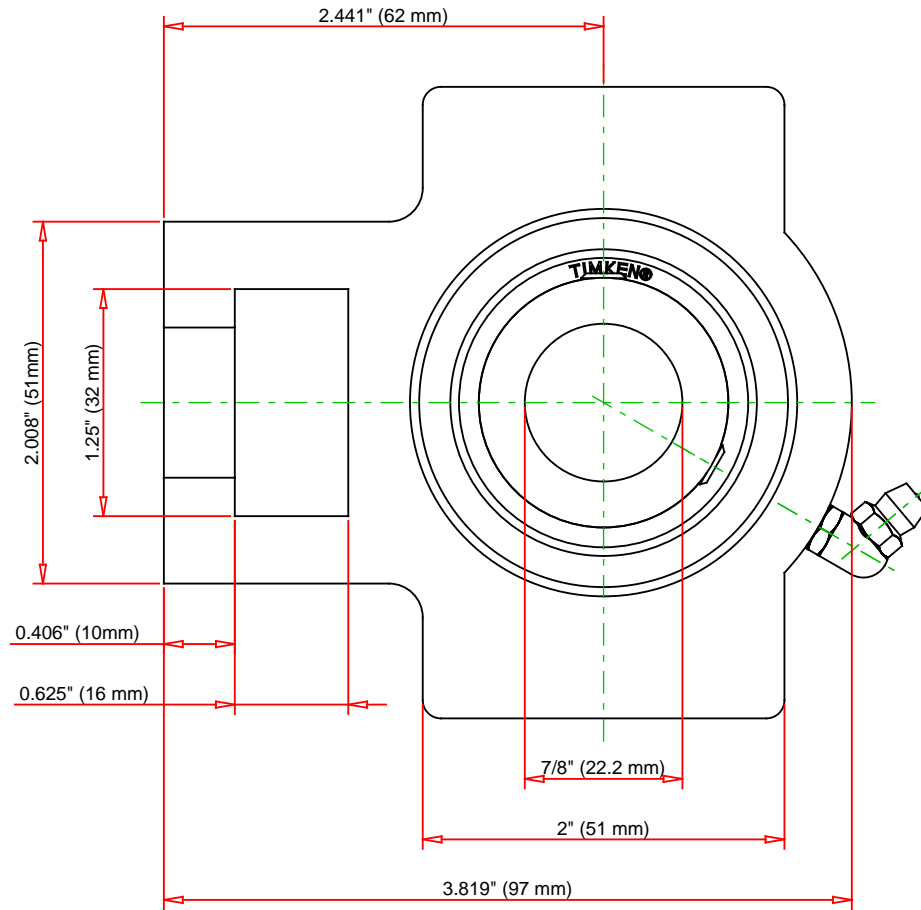
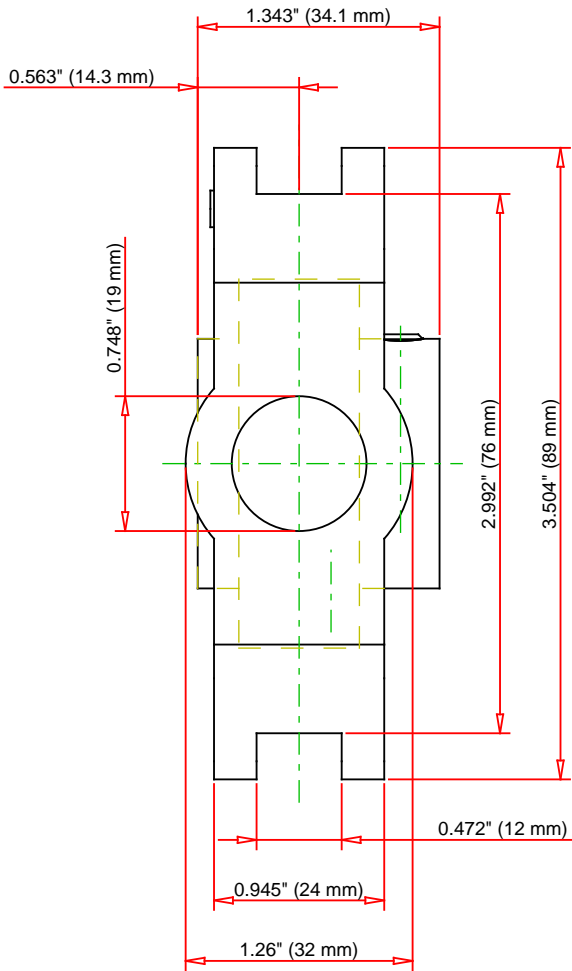
<b>Slot Width A1</b>	12 mm 0.472 in
<b>Socket Width A2</b>	24 mm 0.945 in
<b>Total Height H</b>	89 mm 3.504 in
<b>Pitch Height H1</b>	76 mm
<b>Height H2</b>	51 mm
<b>Total Length L</b>	97 mm 3.819 in
<b>Shaft Length L1</b>	62 mm 2.441 in
<b>Dimension L2</b>	10 mm
<b>Slot Length L3</b>	51 mm 2 in
<b>Adjustment Screw Bore N</b>	19 mm 0.748 in
<b>Opening Width N1</b>	16 mm 0.625 in
<b>Opening Height N2</b>	32 mm 1.25 in
<b>Inner Ring Width B</b>	34.1 mm 1.343 in
<b>Center of Bearing from End S</b>	14.3 mm 0.563 in
<b>Grease Nipple Size</b>	A-1/4-28UNF

## Basic Load Ratings

-

<b>Static Load Rating</b>	7850 N 1765 lbf
---------------------------	--------------------

<b>Dynamic Load Rating</b>	14000 N 3147 lbf
----------------------------	---------------------



Bearing Number	UC205-14			
Load Ratings - C <sub>r</sub>	3147	lbf	14000	N
Load Ratings - C <sub>0r</sub>	1765	lbf	7850	N
Weight	1.9	lb	0.8	kg

**TIMKEN**

THE TIMKEN COMPANY  
NORTH CANTON, OHIO USA

**UCT205-14**  
UCT 200 Take-Up Mounted Bearings - Set  
Screw Locking

Every reasonable effort has been made to ensure the accuracy of the information contained in this writing, but no liability is accepted for errors, omissions or for any other reason.

**FOR DISCUSSION ONLY**