



The Timken Company

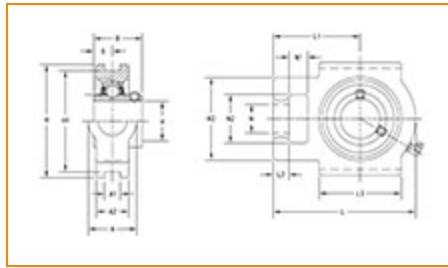
4500 Mt Pleasant St. NW

N. Canton, OH 44720

Phone: (234) 262-3000

E-Mail: CustomerCAD@timken.com • **Web site:** www.timken.com

Part Number UCT206-19, UCT 200 Take-Up Mounted Bearings - Set Screw Locking



[Specifications](#) | [Dimensions](#) | [Basic Load Ratings](#)

Specifications

Bearing Number	UC206-19
Shaft Size d	1 3/16 in
UPC Code	087796076228
Locking Style	Set Screw Locking
Housing Construction	Take-Up

Dimensions

Housing Width A	37 mm 1.457 in
------------------------	-------------------



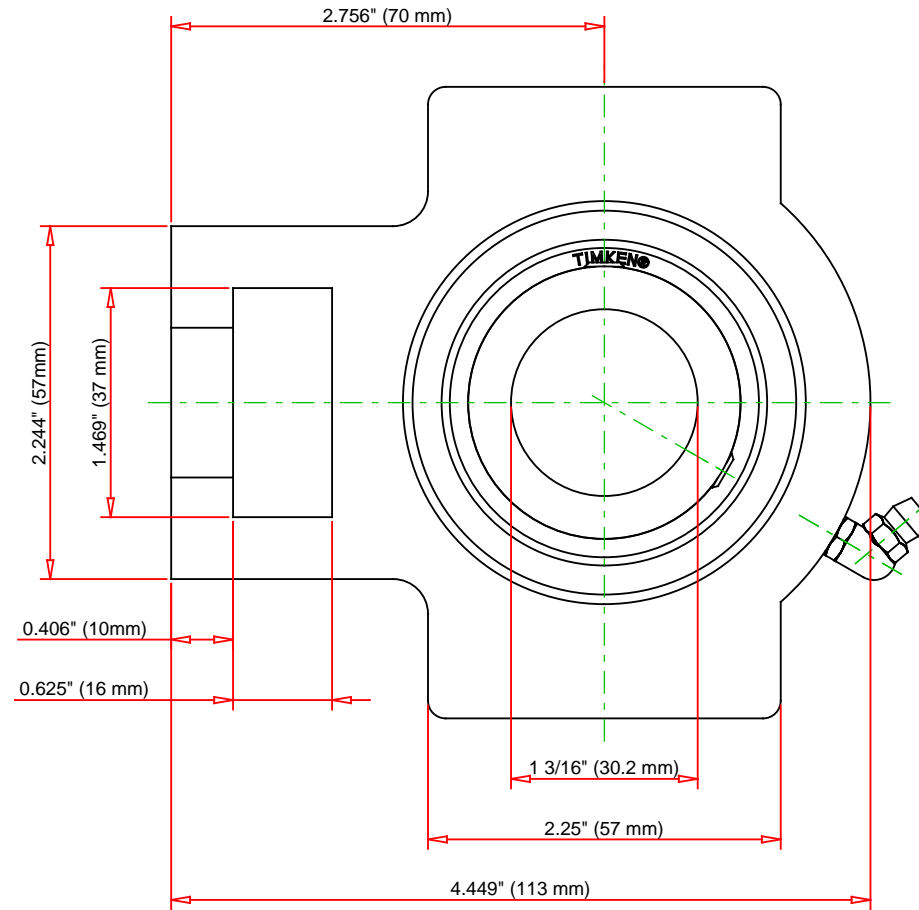
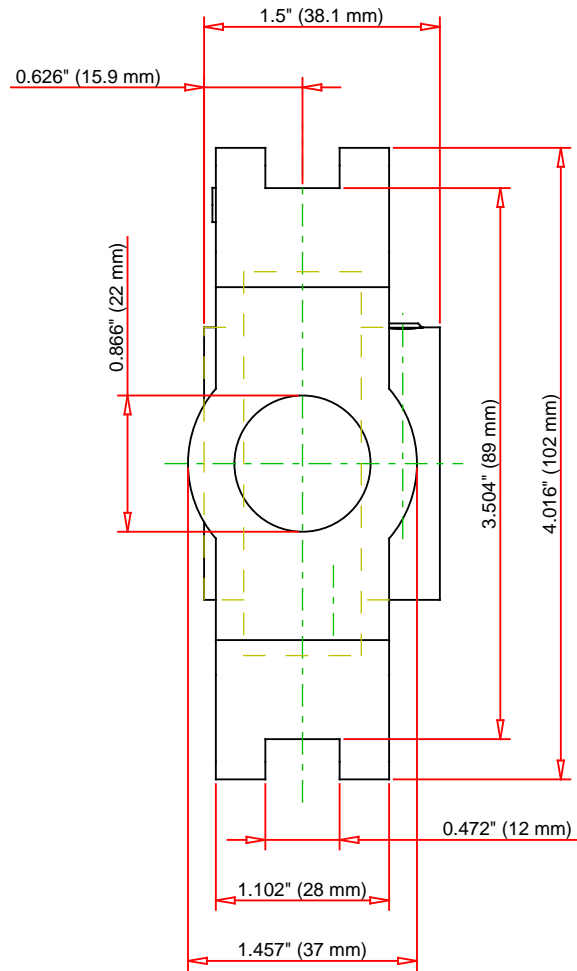
Slot Width A1	12 mm 0.472 in
Socket Width A2	28 mm 1.102 in
Total Height H	102 mm 4.016 in
Pitch Height H1	89 mm
Height H2	57 mm
Total Length L	113 mm 4.449 in
Shaft Length L1	70 mm 2.756 in
Dimension L2	10 mm
Slot Length L3	57 mm 2.25 in
Adjustment Screw Bore N	22 mm 0.866 in
Opening Width N1	16 mm 0.625 in
Opening Height N2	37 mm 1.469 in
Inner Ring Width B	38.1 mm 1.5 in
Center of Bearing from End S	15.9 mm 0.626 in
Grease Nipple Size	A-1/4-28UNF

Basic Load Ratings

-

Static Load Rating	11300 N 2540 lbf
---------------------------	---------------------

Dynamic Load Rating	19500 N 4385 lbf
----------------------------	---------------------



Bearing Number	UC206-19			
Load Ratings - C _r	4385	lbf	19500	N
Load Ratings - C _{0r}	2540	lbf	11300	N
Weight	2.9	lb	1.3	kg

TIMKEN

THE TIMKEN COMPANY
NORTH CANTON, OHIO USA

UCT206-19

UCT 200 Take-Up Mounted Bearings - Set
Screw Locking

Every reasonable effort has been made to ensure the accuracy of the information contained in this writing, but no liability is accepted for errors, omissions or for any other reason.

FOR DISCUSSION ONLY