



**The Timken Company**

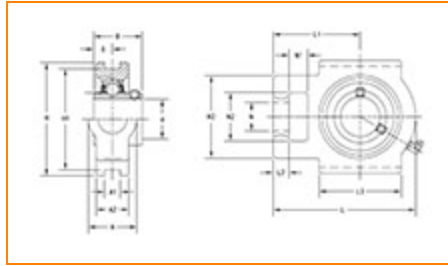
4500 Mt Pleasant St. NW

N. Canton, OH 44720

**Phone:** (234) 262-3000

**E-Mail:** [CustomerCAD@timken.com](mailto:CustomerCAD@timken.com) • **Web site:** [www.timken.com](http://www.timken.com)

## Part Number UCT207-22, UCT 200 Take-Up Mounted Bearings - Set Screw Locking



[Specifications](#) | [Dimensions](#) | [Basic Load Ratings](#)

### Specifications

<b>Bearing Number</b>	UC207-22
<b>Shaft Size d</b>	1 3/8 in
<b>UPC Code</b>	087796076884
<b>Locking Style</b>	Set Screw Locking
<b>Housing Construction</b>	Take-Up

### Dimensions

<b>Housing Width A</b>	37 mm 1.457 in
------------------------	-------------------



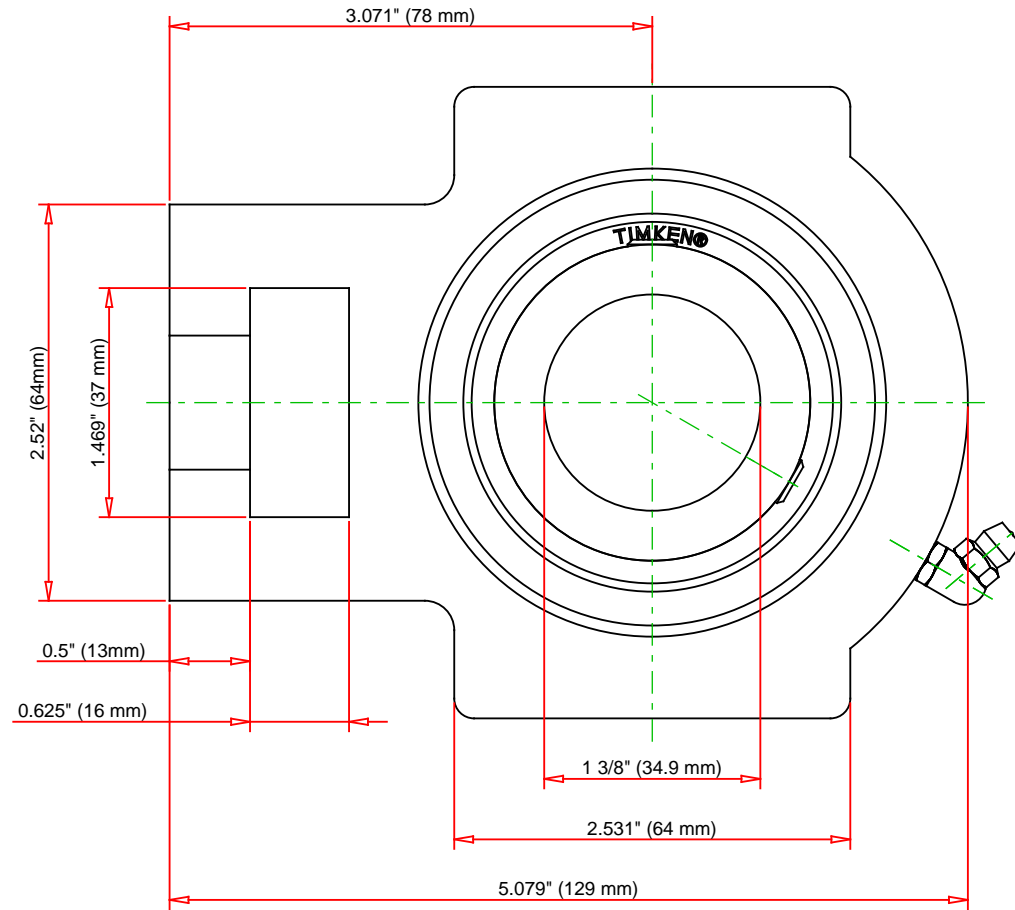
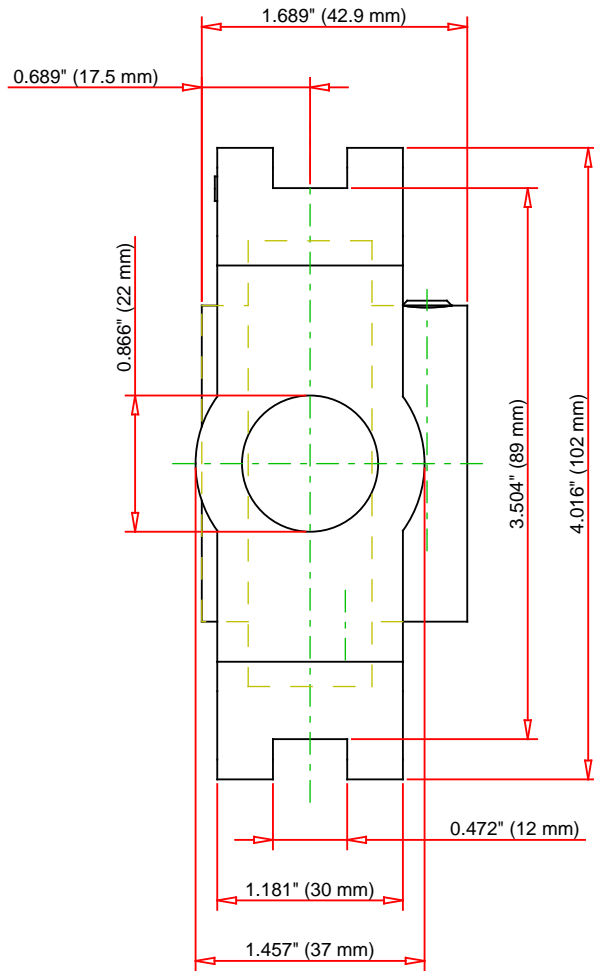
<b>Slot Width A1</b>	12 mm 0.472 in
<b>Socket Width A2</b>	30 mm 1.181 in
<b>Total Height H</b>	102 mm 4.016 in
<b>Pitch Height H1</b>	89 mm
<b>Height H2</b>	64 mm
<b>Total Length L</b>	129 mm 5.079 in
<b>Shaft Length L1</b>	78 mm 3.071 in
<b>Dimension L2</b>	13 mm
<b>Slot Length L3</b>	64 mm 2.531 in
<b>Adjustment Screw Bore N</b>	22 mm 0.866 in
<b>Opening Width N1</b>	16 mm 0.625 in
<b>Opening Height N2</b>	37 mm 1.469 in
<b>Inner Ring Width B</b>	42.9 mm 1.689 in
<b>Center of Bearing from End S</b>	17.5 mm 0.689 in
<b>Grease Nipple Size</b>	A-1/4-28UNF

## Basic Load Ratings

-

<b>Static Load Rating</b>	15400 N 3462 lbf
---------------------------	---------------------

<b>Dynamic Load Rating</b>	25700 N 5778 lbf
----------------------------	---------------------



Bearing Number	UC207-22			
Load Ratings - C <sub>r</sub>	5778	lbf	25700	N
Load Ratings - C <sub>0r</sub>	3462	lbf	15400	N
Weight	3.5	lb	1.6	kg

**TIMKEN**

THE TIMKEN COMPANY  
NORTH CANTON, OHIO USA

**UCT207-22**

UCT 200 Take-Up Mounted Bearings - Set  
Screw Locking

Every reasonable effort has been made to ensure the accuracy of the information contained in this writing, but no liability is accepted for errors, omissions or for any other reason.

**FOR DISCUSSION ONLY**