



**The Timken Company**

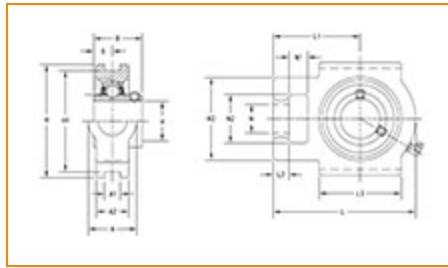
4500 Mt Pleasant St. NW

N. Canton, OH 44720

**Phone:** (234) 262-3000

**E-Mail:** [CustomerCAD@timken.com](mailto:CustomerCAD@timken.com) • **Web site:** [www.timken.com](http://www.timken.com)

## Part Number UCT210-31, UCT 200 Take-Up Mounted Bearings - Set Screw Locking



[Specifications](#) | [Dimensions](#) | [Basic Load Ratings](#)

### Specifications

<b>Bearing Number</b>	UC210-31
<b>Shaft Size d</b>	1 15/16 in
<b>UPC Code</b>	087796077898
<b>Locking Style</b>	Set Screw Locking
<b>Housing Construction</b>	Take-Up

### Dimensions

<b>Housing Width A</b>	49 mm 1.929 in
------------------------	-------------------



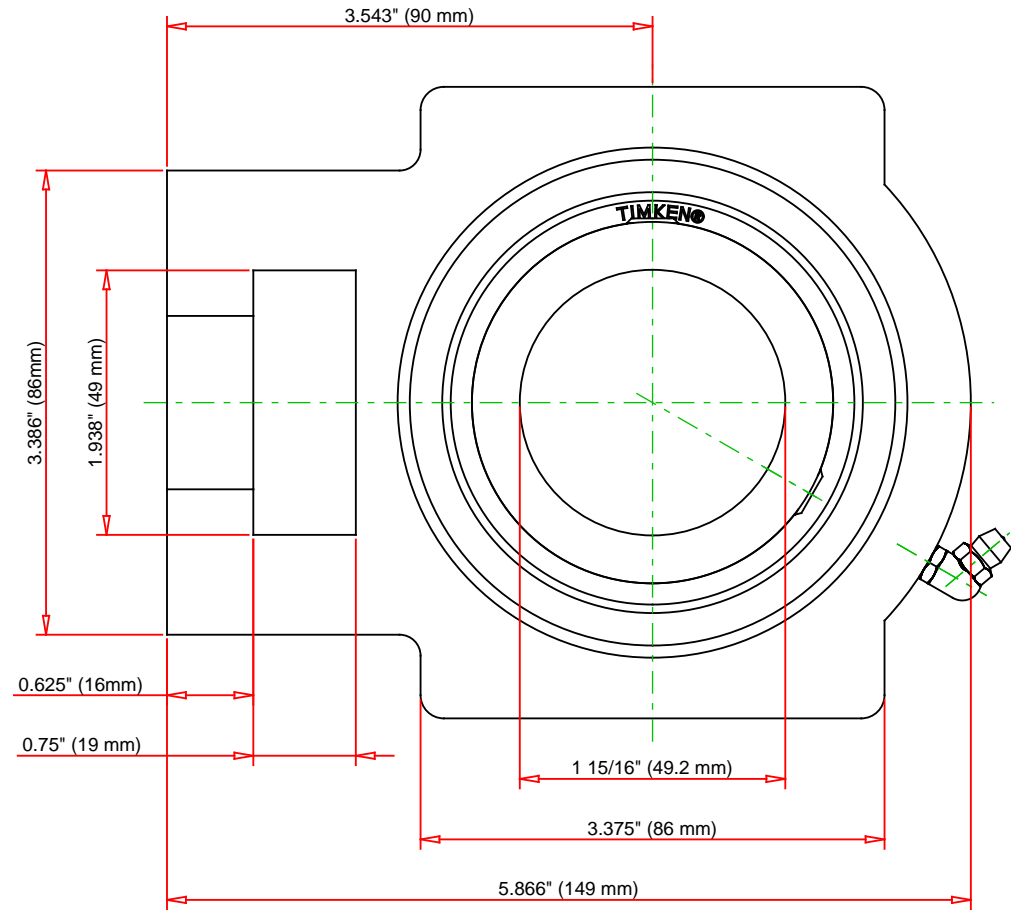
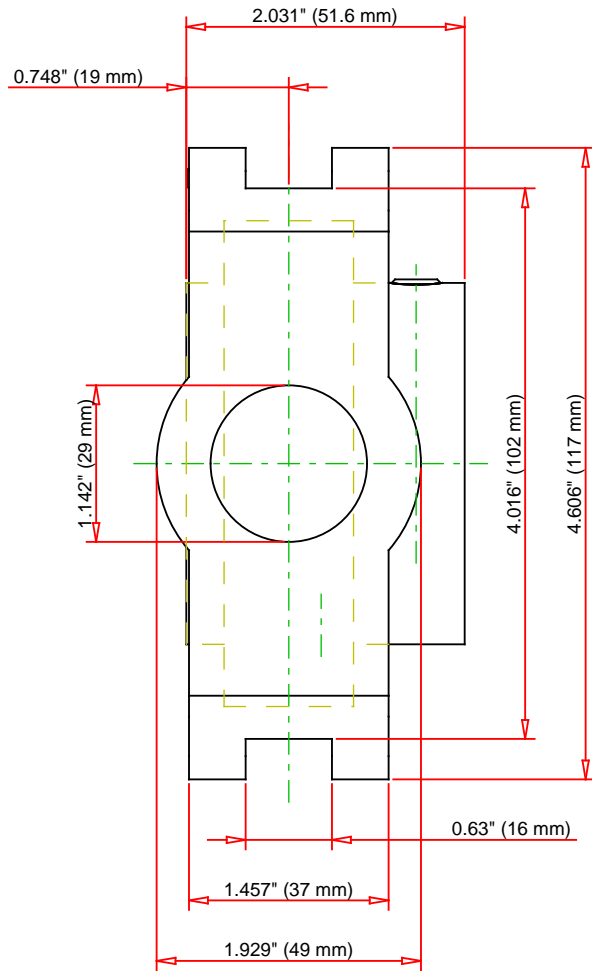
<b>Slot Width A1</b>	16 mm 0.63 in
<b>Socket Width A2</b>	37 mm 1.457 in
<b>Total Height H</b>	117 mm 4.606 in
<b>Pitch Height H1</b>	102 mm
<b>Height H2</b>	86 mm
<b>Total Length L</b>	149 mm 5.866 in
<b>Shaft Length L1</b>	90 mm 3.543 in
<b>Dimension L2</b>	16 mm
<b>Slot Length L3</b>	86 mm 3.375 in
<b>Adjustment Screw Bore N</b>	29 mm 1.142 in
<b>Opening Width N1</b>	19 mm 0.75 in
<b>Opening Height N2</b>	49 mm 1.938 in
<b>Inner Ring Width B</b>	51.6 mm 2.031 in
<b>Center of Bearing from End S</b>	19 mm 0.748 in
<b>Grease Nipple Size</b>	A-1/4-28UNF

## Basic Load Ratings

-

<b>Static Load Rating</b>	23300 N 5238 lbf
---------------------------	---------------------

<b>Dynamic Load Rating</b>	35100 N 7891 lbf
----------------------------	---------------------



Bearing Number	UC210-31			
Load Ratings - C <sub>r</sub>	7891	lbf	35100	N
Load Ratings - C <sub>0r</sub>	5238	lbf	23300	N
Weight	5.7	lb	2.6	kg

**TIMKEN**

THE TIMKEN COMPANY  
NORTH CANTON, OHIO USA

**UCT210-31**

UCT 200 Take-Up Mounted Bearings - Set  
Screw Locking

Every reasonable effort has been made to ensure the accuracy of the information contained in this writing, but no liability is accepted for errors, omissions or for any other reason.

**FOR DISCUSSION ONLY**