



The Timken Company

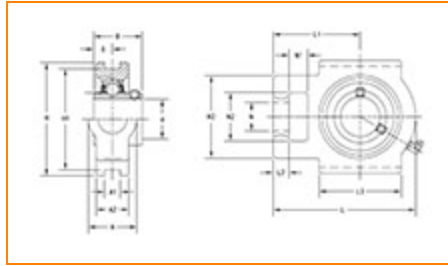
4500 Mt Pleasant St. NW

N. Canton, OH 44720

Phone: (234) 262-3000

E-Mail: CustomerCAD@timken.com • **Web site:** www.timken.com

Part Number UCT211, UCT 200 Take-Up Mounted Bearings - Set Screw Locking



[Specifications](#) | [Dimensions](#) | [Basic Load Ratings](#)

Specifications

Bearing Number	UC211
Shaft Size d	55 mm
UPC Code	087796077904
Locking Style	Set Screw Locking
Housing Construction	Take-Up

Dimensions

Housing Width A	64 mm 2.52 in
------------------------	------------------



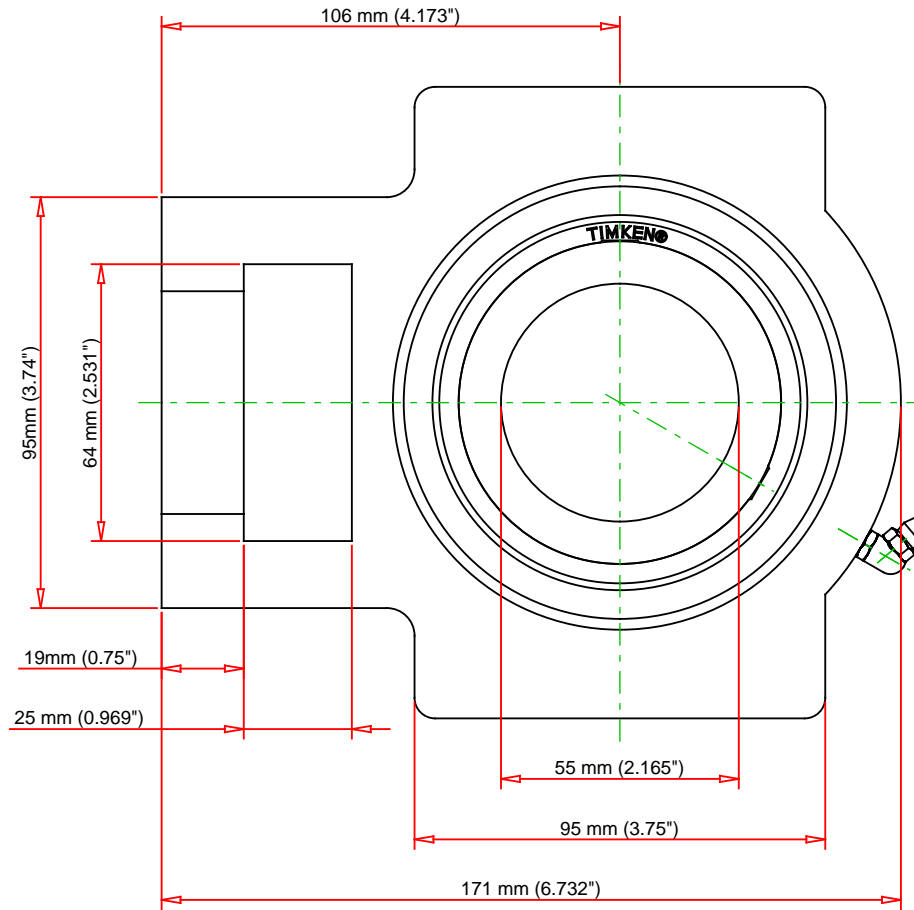
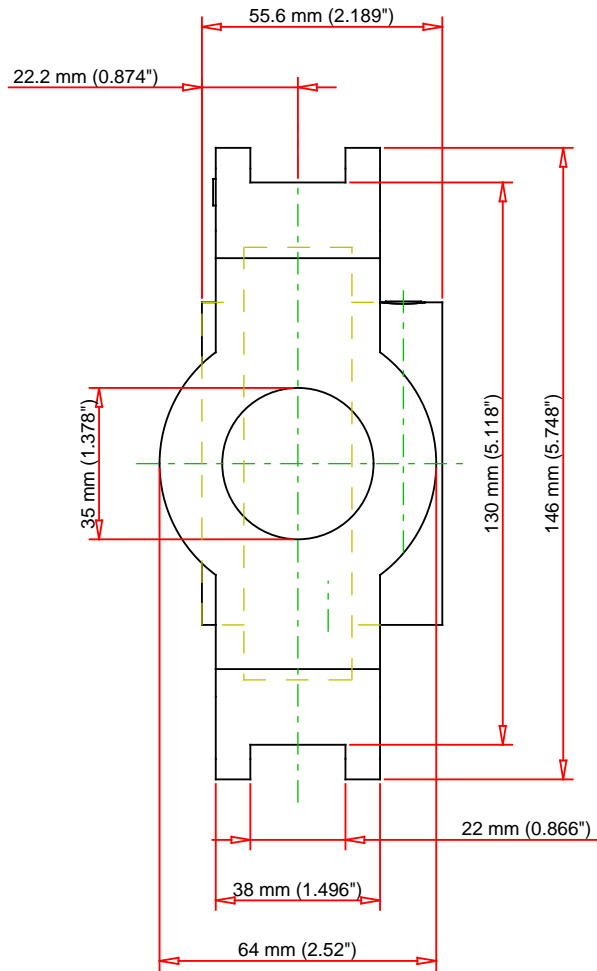
Slot Width A1	22 mm 0.866 in
Socket Width A2	38 mm 1.496 in
Total Height H	146 mm 5.748 in
Pitch Height H1	130 mm
Height H2	95 mm
Total Length L	171 mm 6.732 in
Shaft Length L1	106 mm 4.173 in
Dimension L2	19 mm
Slot Length L3	95 mm 3.75 in
Adjustment Screw Bore N	35 mm 1.378 in
Opening Width N1	25 mm 0.969 in
Opening Height N2	64 mm 2.531 in
Inner Ring Width B	55.6 mm 2.189 in
Center of Bearing from End S	22.2 mm 0.874 in
Grease Nipple Size	A-R1/8

Basic Load Ratings

-

Static Load Rating	29400 N 6609 lbf
---------------------------	---------------------

Dynamic Load Rating	43400 N 9757 lbf
----------------------------	---------------------



Bearing Number	UC211			
Load Ratings - C _r	9757	lbf	43400	N
Load Ratings - C _{0r}	6609	lbf	29400	N
Weight	8.8	lb	4	kg

TIMKEN

THE TIMKEN COMPANY
NORTH CANTON, OHIO USA

UCT211

UCT 200 Take-Up Mounted Bearings - Set
Screw Locking

Every reasonable effort has been made to ensure the accuracy of the information contained in this writing, but no liability is accepted for errors, omissions or for any other reason.

FOR DISCUSSION ONLY