



The Timken Company

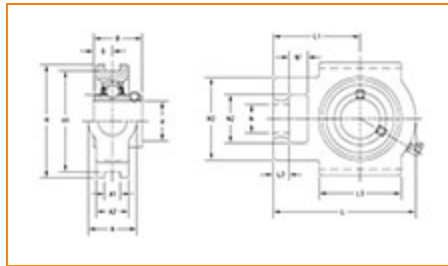
4500 Mt Pleasant St. NW

N. Canton, OH 44720

Phone: (234) 262-3000

E-Mail: CustomerCAD@timken.com • **Web site:** www.timken.com

Part Number UCT212-39, UCT 200 Take-Up Mounted Bearings - Set Screw Locking



[Specifications](#) | [Dimensions](#) | [Basic Load Ratings](#)

Specifications

Bearing Number	UC212-39
Shaft Size d	2 7/16 in
UPC Code	087796078116
Locking Style	Set Screw Locking
Housing Construction	Take-Up

Dimensions

Housing Width A	64 mm 2.52 in
------------------------	------------------

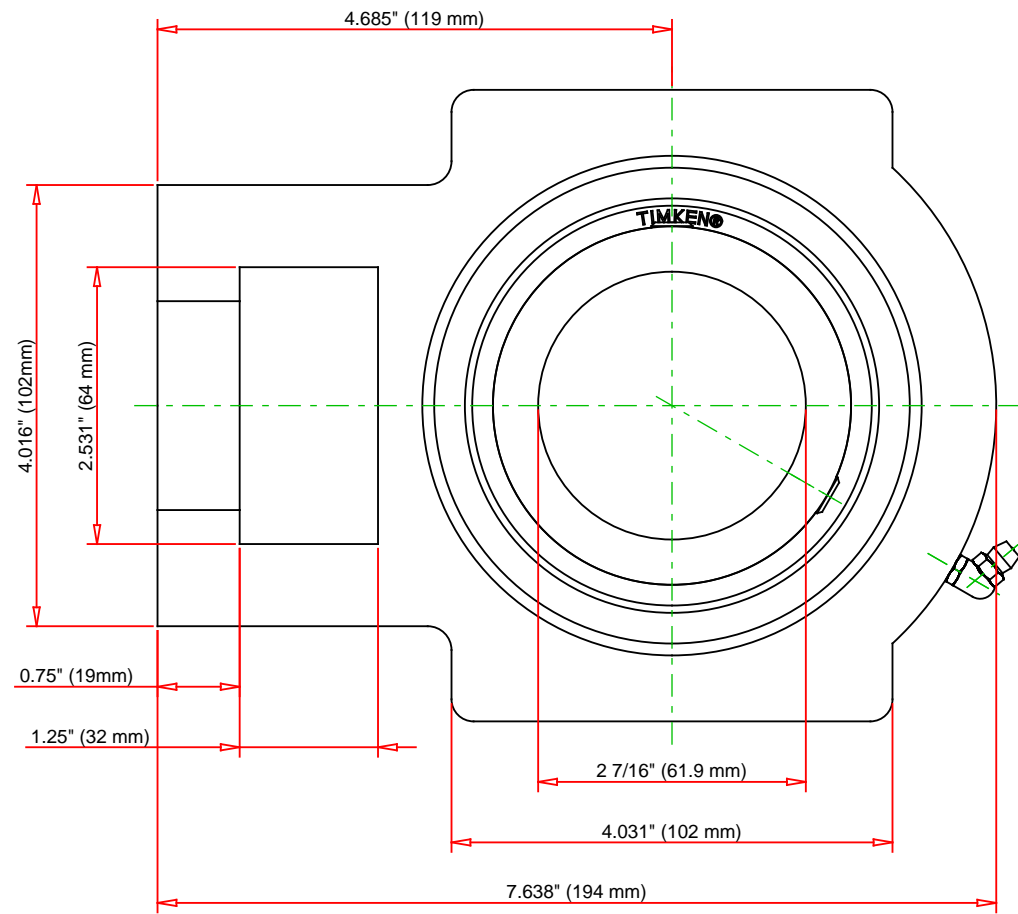
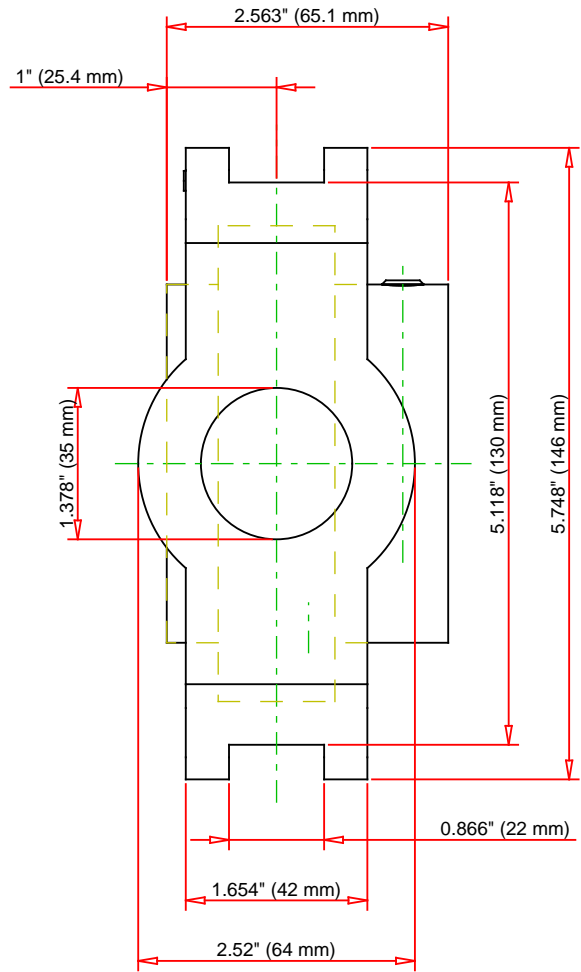


Slot Width A1	22 mm 0.866 in
Socket Width A2	42 mm 1.654 in
Total Height H	146 mm 5.748 in
Pitch Height H1	130 mm
Height H2	102 mm
Total Length L	194 mm 7.638 in
Shaft Length L1	119 mm 4.685 in
Dimension L2	19 mm
Slot Length L3	102 mm 4.031 in
Adjustment Screw Bore N	35 mm 1.378 in
Opening Width N1	32 mm 1.25 in
Opening Height N2	64 mm 2.531 in
Inner Ring Width B	65.1 mm 2.5630 in
Center of Bearing from End S	25.4 mm 1 in
Grease Nipple Size	A-R1/8

Basic Load Ratings

-

Static Load Rating	36200 N 8138 lbf
Dynamic Load Rating	52400 N 11780 lbf



Bearing Number	UC212-39			
Load Ratings - C _r	11780	lbf	52400	N
Load Ratings - C _{0r}	8138	lbf	36200	N
Weight	10.8	lb	4.9	kg

TIMKEN
 THE TIMKEN COMPANY
 NORTH CANTON, OHIO USA

UCT212-39
 UCT 200 Take-Up Mounted Bearings - Set
 Screw Locking

Every reasonable effort has been made to ensure the accuracy of the information contained in this writing, but no liability is accepted for errors, omissions or for any other reason.

FOR DISCUSSION ONLY