



The Timken Company

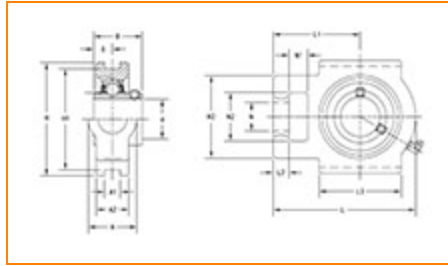
4500 Mt Pleasant St. NW

N. Canton, OH 44720

Phone: (234) 262-3000

E-Mail: CustomerCAD@timken.com • **Web site:** www.timken.com

Part Number UCT213, UCT 200 Take-Up Mounted Bearings - Set Screw Locking



[Specifications](#) | [Dimensions](#) | [Basic Load Ratings](#)

Specifications

Bearing Number	UC213
Shaft Size d	65 mm
UPC Code	087796078185
Locking Style	Set Screw Locking
Housing Construction	Take-Up

Dimensions

Housing Width A	70 mm 2.756 in
------------------------	-------------------

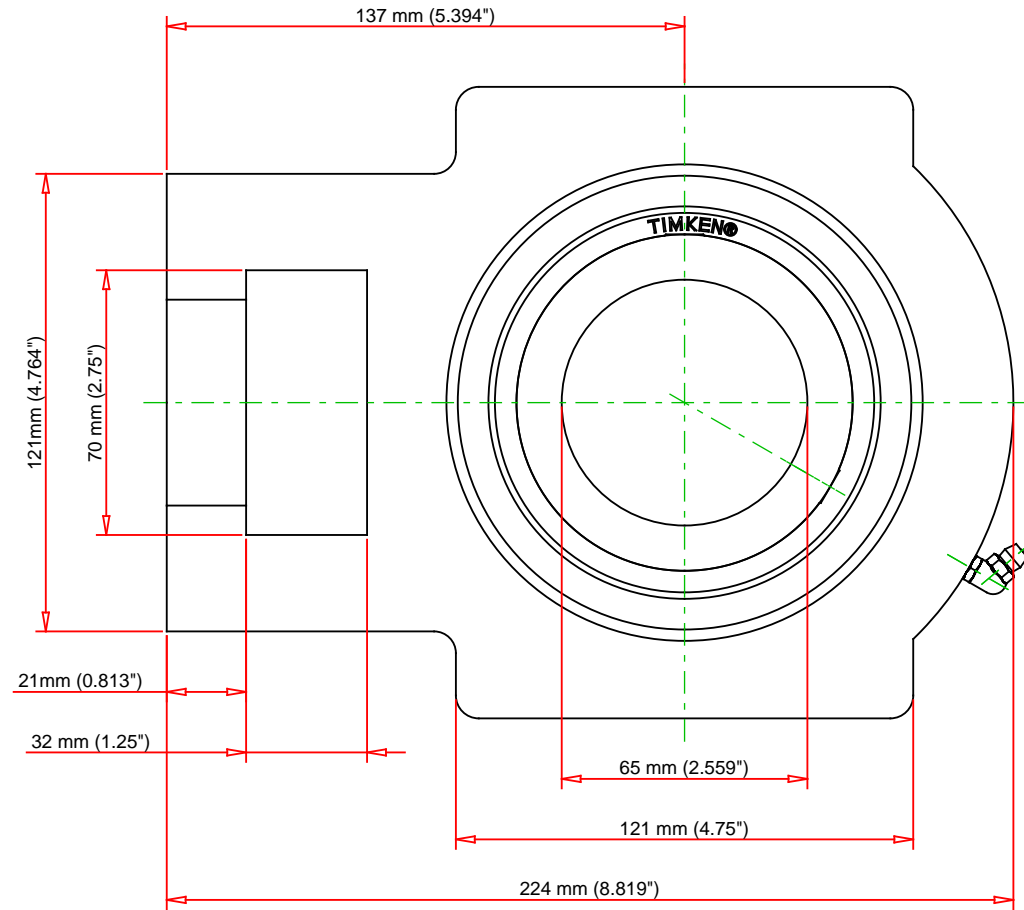
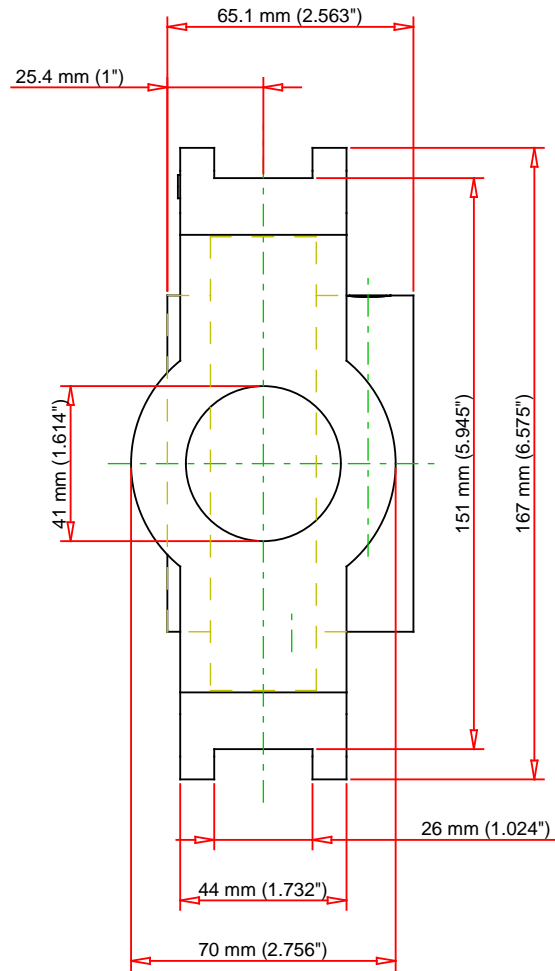


Slot Width A1	26 mm 1.024 in
Socket Width A2	44 mm 1.732 in
Total Height H	167 mm 6.575 in
Pitch Height H1	151 mm
Height H2	121 mm
Total Length L	224 mm 8.819 in
Shaft Length L1	137 mm 5.394 in
Dimension L2	21 mm
Slot Length L3	121 mm 4.75 in
Adjustment Screw Bore N	41 mm 1.614 in
Opening Width N1	32 mm 1.25 in
Opening Height N2	70 mm 2.75 in
Inner Ring Width B	65.1 mm 2.5630 in
Center of Bearing from End S	25.4 mm 1 in
Grease Nipple Size	A-R1/8

Basic Load Ratings

-

Static Load Rating	40100 N 9015 lbf
Dynamic Load Rating	57200 N 12859 lbf



Bearing Number	UC213			
Load Ratings - C _r	12859	lbf	57200	N
Load Ratings - C _{0r}	9015	lbf	40100	N
Weight	15.4	lb	7	kg

TIMKEN

THE TIMKEN COMPANY
NORTH CANTON, OHIO USA

UCT213
UCT 200 Take-Up Mounted Bearings - Set
Screw Locking

Every reasonable effort has been made to ensure the accuracy of the information contained in this writing, but no liability is accepted for errors, omissions or for any other reason.

FOR DISCUSSION ONLY