



The Timken Company

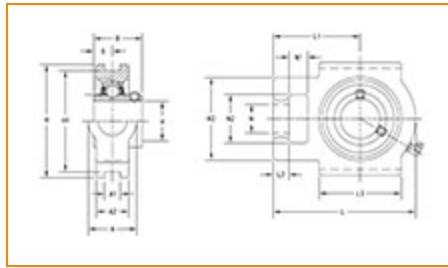
4500 Mt Pleasant St. NW

N. Canton, OH 44720

Phone: (234) 262-3000

E-Mail: CustomerCAD@timken.com • **Web site:** www.timken.com

Part Number UCT215-48, UCT 200 Take-Up Mounted Bearings - Set Screw Locking



[Specifications](#) | [Dimensions](#) | [Basic Load Ratings](#)

Specifications

Bearing Number	UC215-48
Shaft Size d	3 in
UPC Code	087796078307
Locking Style	Set Screw Locking
Housing Construction	Take-Up

Dimensions

Housing Width A	70 mm 2.756 in
------------------------	-------------------



Slot Width A1 26 mm
1.024 in

Socket Width A2 48 mm
1.89 in

Total Height H 167 mm
6.575 in

Pitch Height H1 151 mm

Height H2 121 mm

Total Length L 232 mm
9.134 in

Shaft Length L1 140 mm
5.512 in

Dimension L2 21 mm

Slot Length L3 121 mm
4.75 in

Adjustment Screw Bore N 41 mm
1.614 in

Opening Width N1 32 mm
1.25 in

Opening Height N2 70 mm
2.75 in

Inner Ring Width B 77.8 mm
3.063 in

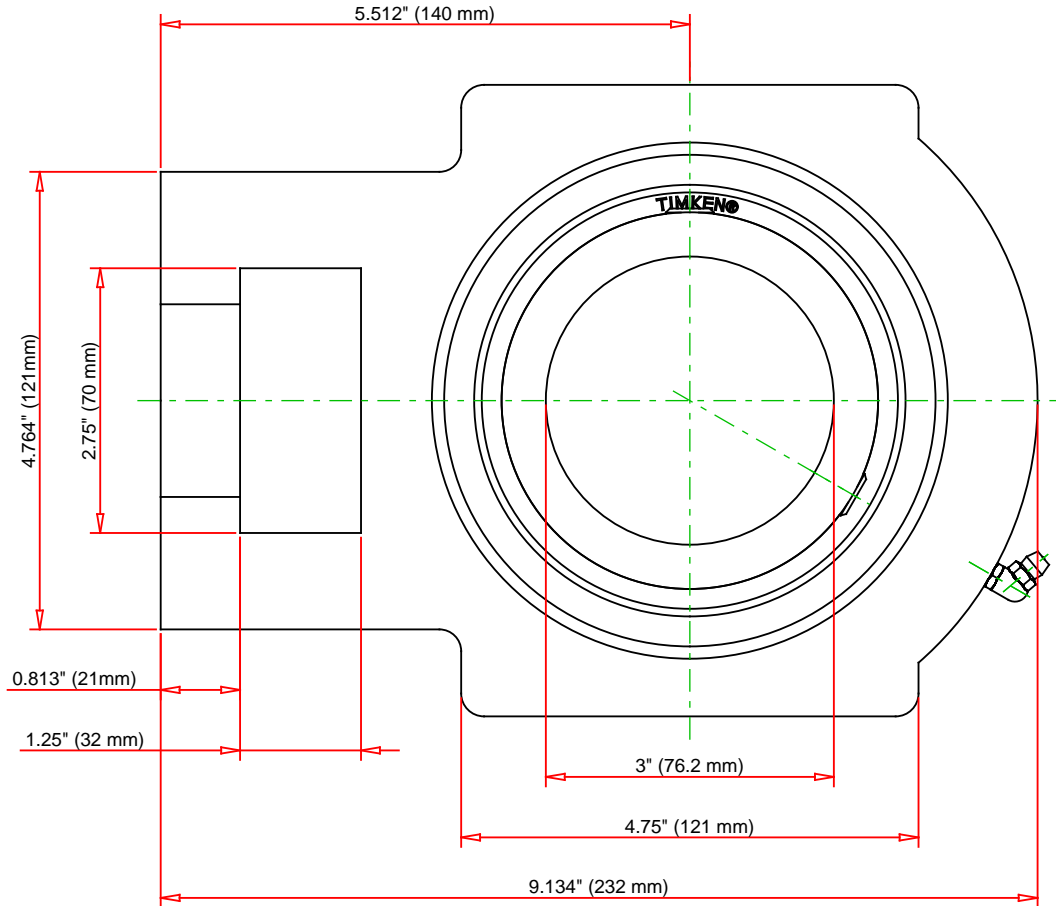
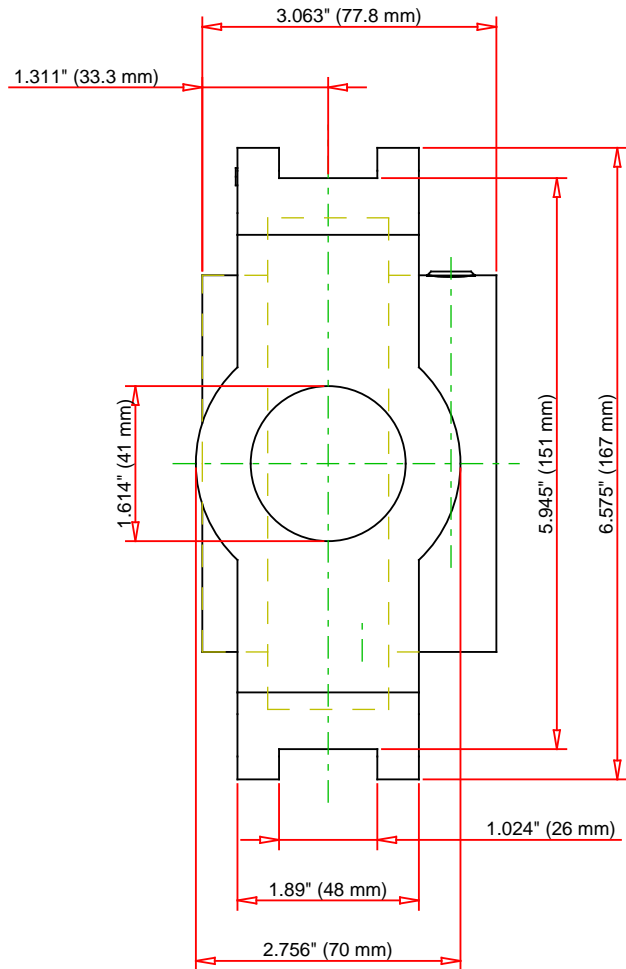
Center of Bearing from End S 33.3 mm
1.311 in

Grease Nipple Size A-R1/8

Basic Load Ratings

Static Load Rating	48300 N 10858 lbf
---------------------------	----------------------

Dynamic Load Rating	67400 N 15152 lbf
----------------------------	----------------------



Bearing Number	UC215-48			
Load Ratings - C _r	15152	lbf	67400	N
Load Ratings - C _{0r}	10858	lbf	48300	N
Weight	16.1	lb	7.3	kg

TIMKEN
 THE TIMKEN COMPANY
 NORTH CANTON, OHIO USA

UCT215-48
 UCT 200 Take-Up Mounted Bearings - Set
 Screw Locking

Every reasonable effort has been made to ensure the accuracy of the information contained in this writing, but no liability is accepted for errors, omissions or for any other reason.

FOR DISCUSSION ONLY