



The Timken Company

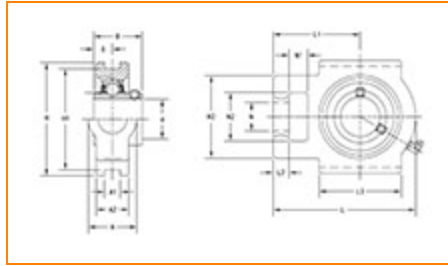
4500 Mt Pleasant St. NW

N. Canton, OH 44720

Phone: (234) 262-3000

E-Mail: CustomerCAD@timken.com • **Web site:** www.timken.com

Part Number UCT201-8, UCT 200 Take-Up Mounted Bearings - Set Screw Locking



[Specifications](#) | [Dimensions](#) | [Basic Load Ratings](#)

Specifications

Bearing Number	UC201-8
Shaft Size d	0.5000 in
UPC Code	087796139503
Locking Style	Set Screw Locking
Housing Construction	Take-Up

Dimensions

Housing Width A	32 mm 1.25 in
------------------------	------------------



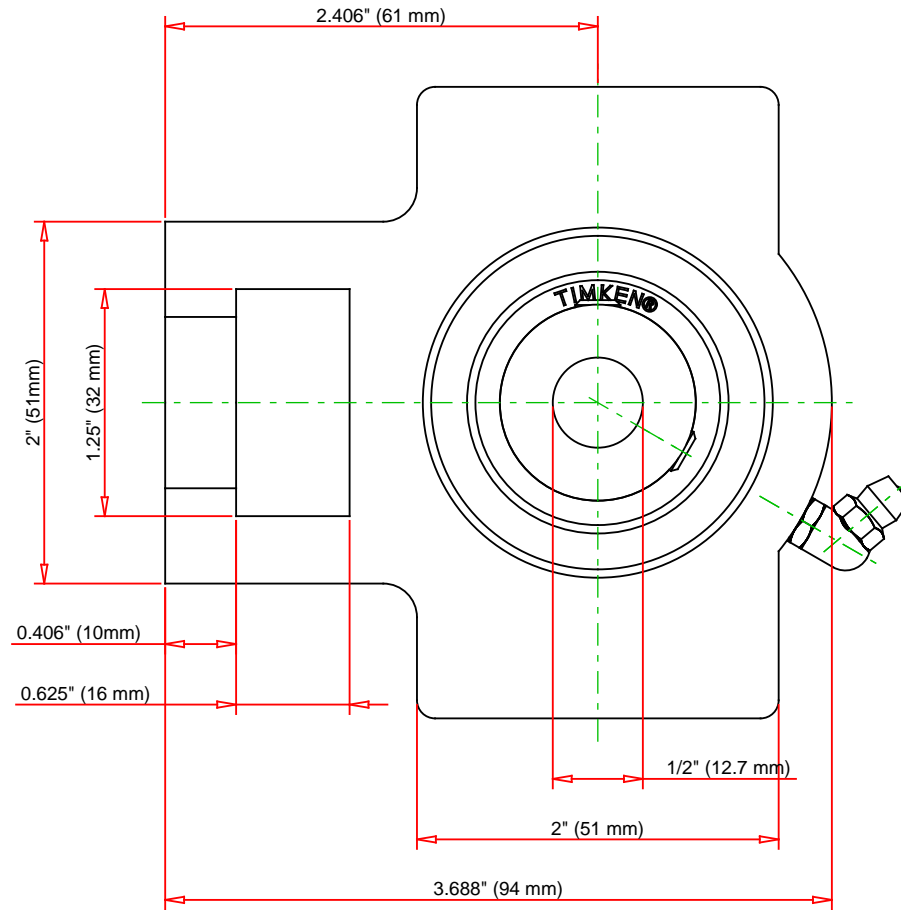
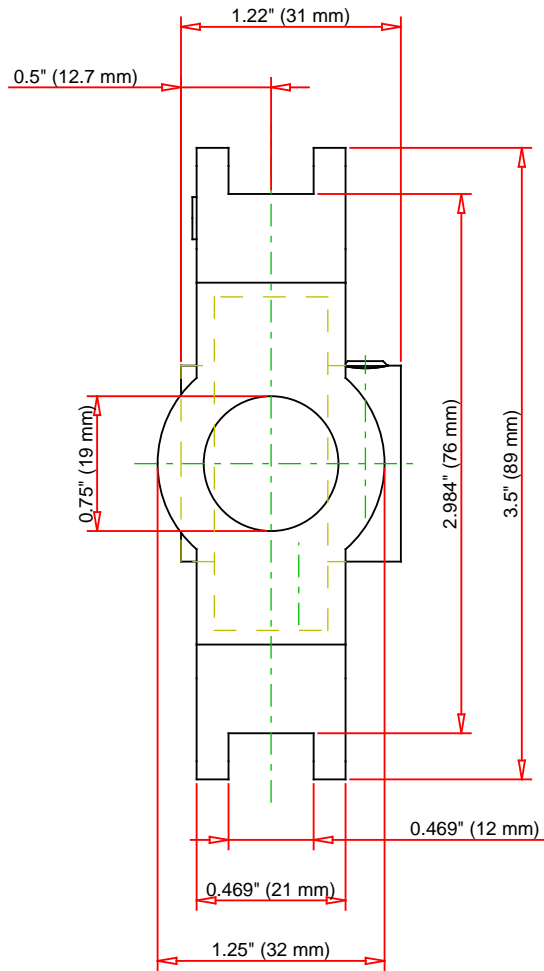
Slot Width A1	12 mm 0.469 in
Socket Width A2	21 mm 0.469 in
Total Height H	89 mm 3.5 in
Pitch Height H1	76 mm
Height H2	51 mm
Total Length L	94 mm 3.688 in
Shaft Length L1	61 mm 2.406 in
Dimension L2	10 mm
Slot Length L3	51 mm 2 in
Adjustment Screw Bore N	19 mm 0.75 in
Opening Width N1	16 mm 0.625 in
Opening Height N2	32 mm 1.25 in
Inner Ring Width B	31 mm 1.22 in
Center of Bearing from End S	12.7 mm 0.5 in
Grease Nipple Size	A-1/4-28UNF

Basic Load Ratings

-

Static Load Rating	6650 N 1495 lbf
---------------------------	--------------------

Dynamic Load Rating	12800 N 2878 lbf
----------------------------	---------------------



Bearing Number	UC201-8		
Load Ratings - C _r	2878	lbf	12800
Load Ratings - C _{0r}	1495	lbf	6650
Weight	1.8	lb	0.8
			kg

TIMKEN

THE TIMKEN COMPANY
NORTH CANTON, OHIO USA

UCT201-8
UCT 200 Take-Up Mounted Bearings - Set
Screw Locking

Every reasonable effort has been made to ensure the accuracy of the information contained in this writing, but no liability is accepted for errors, omissions or for any other reason.

FOR DISCUSSION ONLY