



The Timken Company

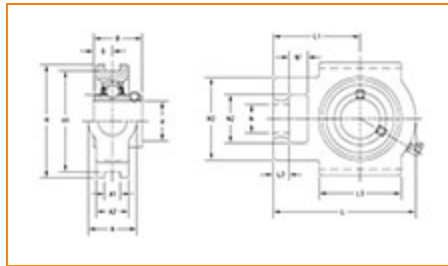
4500 Mt Pleasant St. NW

N. Canton, OH 44720

Phone: (234) 262-3000

E-Mail: CustomerCAD@timken.com • **Web site:** www.timken.com

Part Number UCT205-15, UCT 200 Take-Up Mounted Bearings - Set Screw Locking



[Specifications](#) | [Dimensions](#) | [Basic Load Ratings](#)

Specifications

Bearing Number	UC205-15
Shaft Size d	15/16 in
UPC Code	087796140561
Locking Style	Set Screw Locking
Housing Construction	Take-Up

Dimensions

Housing Width A	32 mm 1.26 in
------------------------	------------------



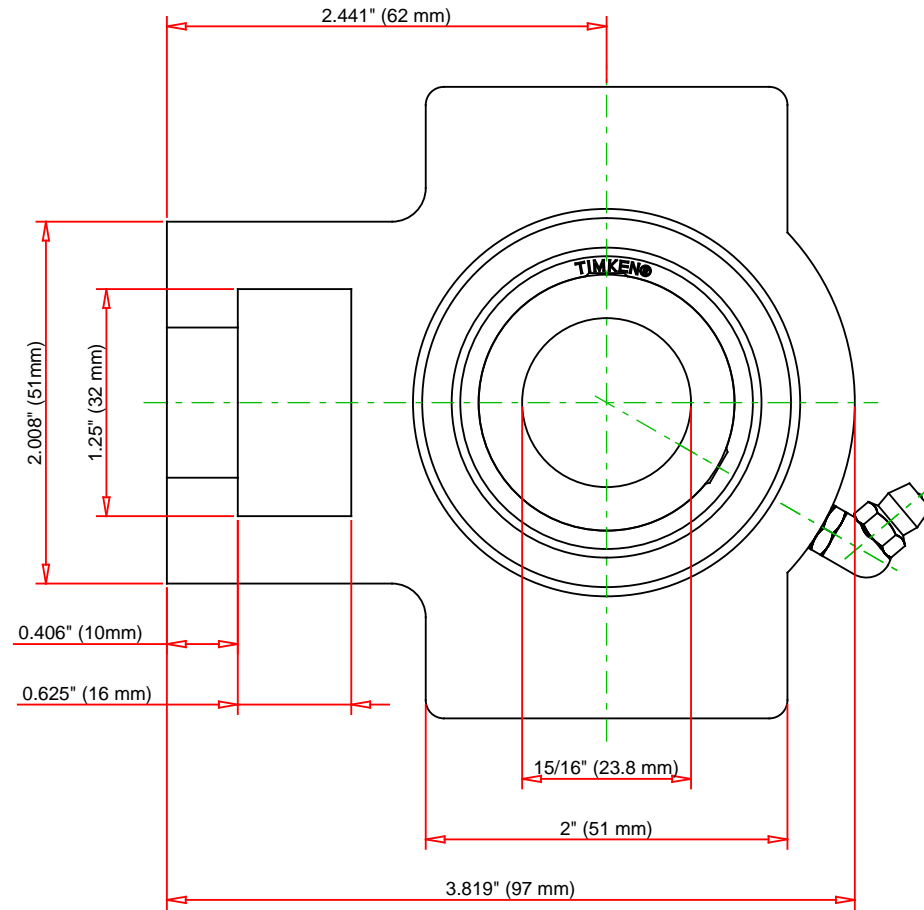
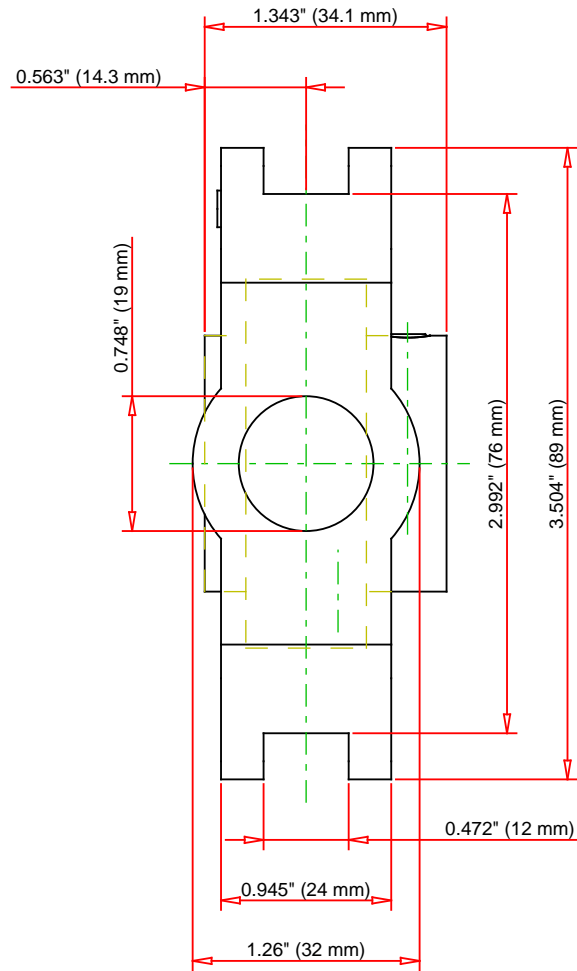
Slot Width A1	12 mm 0.472 in
Socket Width A2	24 mm 0.945 in
Total Height H	89 mm 3.504 in
Pitch Height H1	76 mm
Height H2	51 mm
Total Length L	97 mm 3.819 in
Shaft Length L1	62 mm 2.441 in
Dimension L2	10 mm
Slot Length L3	51 mm 2 in
Adjustment Screw Bore N	19 mm 0.748 in
Opening Width N1	16 mm 0.625 in
Opening Height N2	32 mm 1.25 in
Inner Ring Width B	34.1 mm 1.343 in
Center of Bearing from End S	14.3 mm 0.563 in
Grease Nipple Size	A-1/4-28UNF

Basic Load Ratings

-

Static Load Rating	7850 N 1765 lbf
---------------------------	--------------------

Dynamic Load Rating	14000 N 3147 lbf
----------------------------	---------------------



Bearing Number	UC205-15			
Load Ratings - C _r	3147	lbf	14000	N
Load Ratings - C _{0r}	1765	lbf	7850	N
Weight	1.9	lb	0.8	kg

TIMKEN

THE TIMKEN COMPANY
NORTH CANTON, OHIO USA

UCT205-15
UCT 200 Take-Up Mounted Bearings - Set
Screw Locking

Every reasonable effort has been made to ensure the accuracy of the information contained in this writing, but no liability is accepted for errors, omissions or for any other reason.

FOR DISCUSSION ONLY