



**The Timken Company**

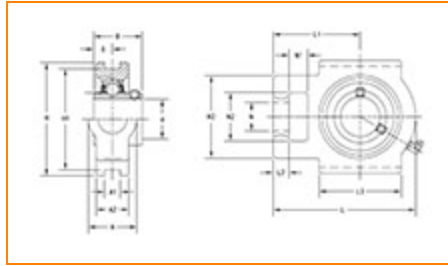
4500 Mt Pleasant St. NW

N. Canton, OH 44720

**Phone:** (234) 262-3000

**E-Mail:** [CustomerCAD@timken.com](mailto:CustomerCAD@timken.com) • **Web site:** [www.timken.com](http://www.timken.com)

## Part Number UCT217-52, UCT 200 Take-Up Mounted Bearings - Set Screw Locking



[Specifications](#) | [Dimensions](#) | [Basic Load Ratings](#)

### Specifications

<b>Bearing Number</b>	UC217-52
<b>Shaft Size d</b>	3 1/4 in
<b>UPC Code</b>	087796141124
<b>Locking Style</b>	Set Screw Locking
<b>Housing Construction</b>	Take-Up

### Dimensions

<b>Housing Width A</b>	73 mm 2.875 in
------------------------	-------------------



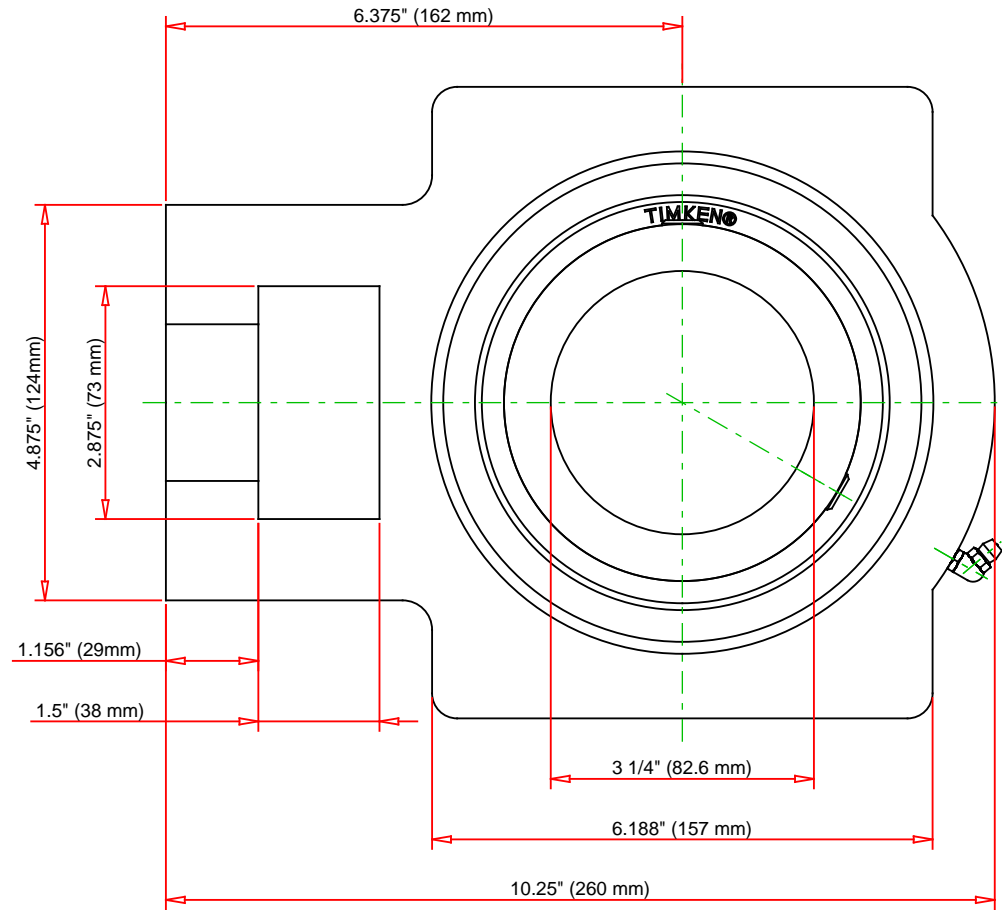
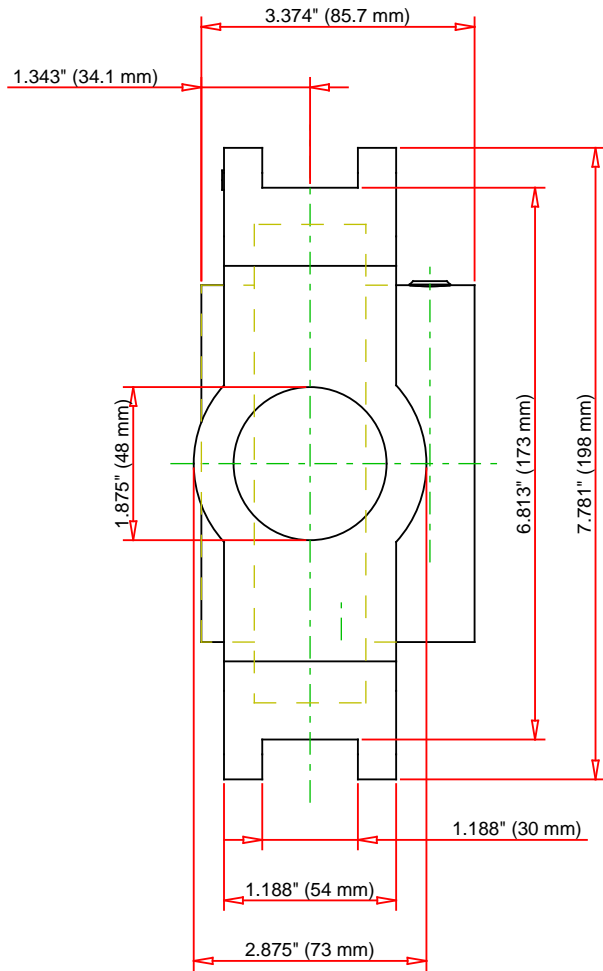
<b>Slot Width A1</b>	30 mm 1.188 in
<b>Socket Width A2</b>	54 mm 1.188 in
<b>Total Height H</b>	198 mm 7.781 in
<b>Pitch Height H1</b>	173 mm
<b>Height H2</b>	124 mm
<b>Total Length L</b>	260 mm 10 1/4 in
<b>Shaft Length L1</b>	162 mm 6.375 in
<b>Dimension L2</b>	29 mm
<b>Slot Length L3</b>	157 mm 6.188 in
<b>Adjustment Screw Bore N</b>	48 mm 1.875 in
<b>Opening Width N1</b>	38 mm 1.5 in
<b>Opening Height N2</b>	73 mm 2.875 in
<b>Inner Ring Width B</b>	85.7 mm 3.3740 in
<b>Center of Bearing from End S</b>	34.1 mm 1.343 in
<b>Grease Nipple Size</b>	A-R1/8

## Basic Load Ratings

-

<b>Static Load Rating</b>	61900 N 13916 lbf
---------------------------	----------------------

<b>Dynamic Load Rating</b>	84000 N 18884 lbf
----------------------------	----------------------



Bearing Number	UC217-52			
Load Ratings - C <sub>r</sub>	18884	lbf	84000	N
Load Ratings - C <sub>0r</sub>	13916	lbf	61900	N
Weight	24.3	lb	11	kg

**TIMKEN**

THE TIMKEN COMPANY  
NORTH CANTON, OHIO USA

**UCT217-52**

UCT 200 Take-Up Mounted Bearings - Set  
Screw Locking

Every reasonable effort has been made to ensure the accuracy of the information contained in this writing, but no liability is accepted for errors, omissions or for any other reason.

**FOR DISCUSSION ONLY**