


**The Timken Company**

4500 Mt Pleasant St. NW

N. Canton, OH 44720

**Phone:** (234) 262-3000

**E-Mail:** [CustomerCAD@timken.com](mailto:CustomerCAD@timken.com) • **Web site:** [www.timken.com](http://www.timken.com)
**Part Number 23248EMBW27W507C08C3, Spherical Roller Bearings - Brass Cage**

Spherical bearings are designed to manage high radial loads even when misalignment, poor lubrication, contamination, extreme speeds or critical application stresses are present.




[Specifications](#) | [Dimensions](#) | [Abutment and Fillet Dimensions](#) | [Basic Load Ratings](#) | [Factors](#)

**Specifications**

<b>Design Unit</b>	Metric
<b>d - Bore</b>	240 mm
<b>Cage Type</b>	EMB
<b>Cage Material</b>	Brass
<b>Superseded Part</b>	23248YMBW27W507C08C3

**Dimensions**

<b>D - Outer Diameter</b>	440 mm 17.323 in
 <b>- Inner Ring Width</b>	160 mm 6.299 in

<b>B - Outer Ring Width</b>	160 mm 6.299 in
-----------------------------	--------------------

## Abutment and Fillet Dimensions

<b>R - Inner Ring "To Clear" Radius<sup>1</sup></b>	3 mm 0.120 in
---	------------------

<b>r - Outer Ring "To Clear" Radius<sup>2</sup></b>	3 mm 0.12 in
---	-----------------

<b>da - Inner Ring Backing Diameter</b>	280 mm 11.0000 in
---	----------------------

<b>Da - Outer Ring Backing Diameter</b>	394.000 mm 15.500 in
---	-------------------------

## Basic Load Ratings

<b>C0 - Static Radial Rating</b>	4160000 N 935000 lbf
----------------------------------	-------------------------

<b>C1(2) - Dynamic Radial Rating (Two-Rows)</b>	3050000 N 685000 lbf
---	-------------------------

## Factors

<b>e - ISO Factor<sup>3</sup></b>	0.35
-----------------------------------	------

<b>Y0 - ISO Factor<sup>4</sup></b>	1.88
------------------------------------	------

<b>Y1 - ISO Factor<sup>5</sup></b>	1.92
------------------------------------	------

<b>Y2 - ISO Factor<sup>6</sup></b>	2.86
------------------------------------	------

<b>Reference Thermal Speed Rating (Grease)</b>	720 rpm
--	---------

<b>Reference Thermal Speed Rating (Oil)<sup>7</sup></b>	790 rpm
---	---------

<b>Cg - Geometry Factor<sup>8</sup></b>	0.1115
---	--------

<sup>1</sup> Maximum housing fillet radius that bearing corners will clear.

<sup>2</sup> Maximum shaft fillet radius that bearing corners will clear.

<sup>3</sup> These factors apply for both inch and metric calculations. Consult your Timken representative for instruction on use.

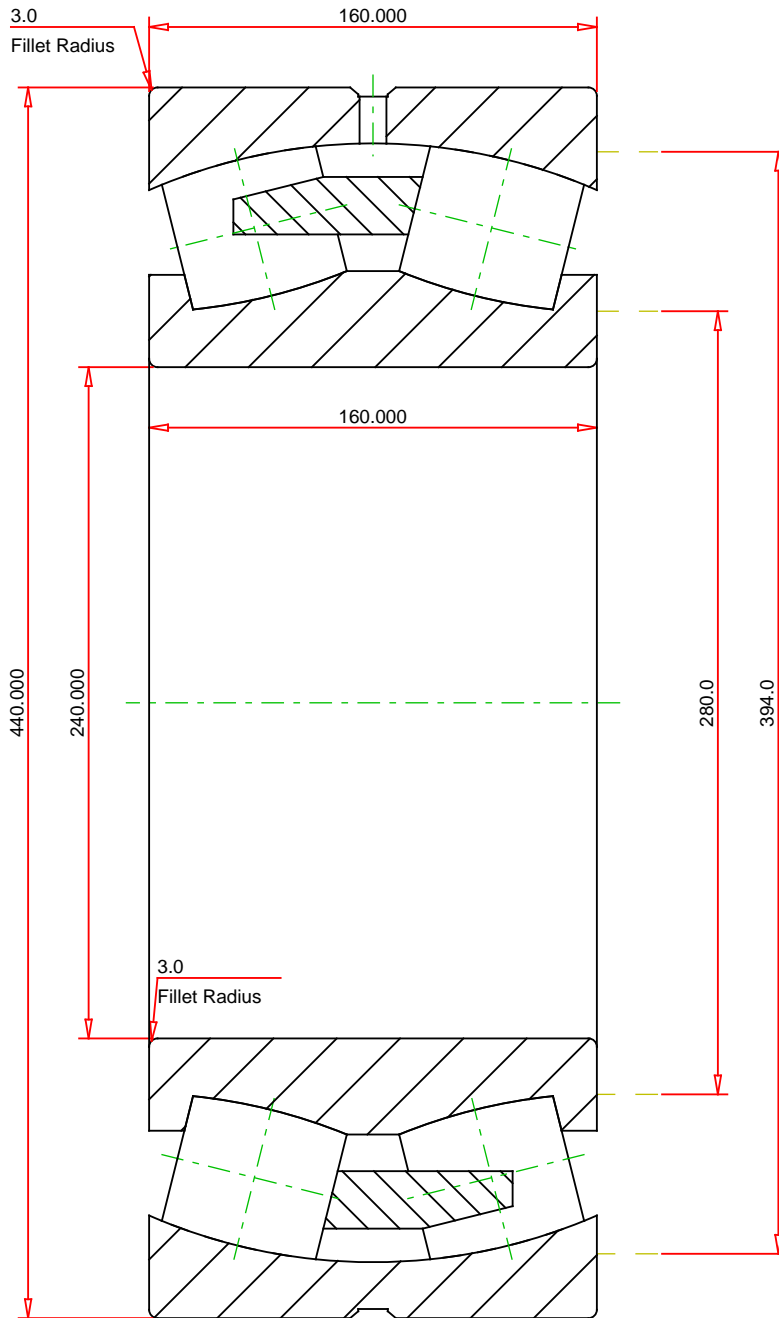
<sup>4</sup> These factors apply for both inch and metric calculations. See engineering

<sup>5</sup> These factors apply for both inch and metric calculations. Consult your Timken representative for instruction on use.

<sup>6</sup> These factors apply for both inch and metric calculations. Consult your Timken representative for instruction on use.

<sup>7</sup> See thermal speed ratings in the engineering section.

<sup>8</sup> Geometry constant for Lubrication Life Adjustment Factor a3l.



METRIC UNITS

Number of Rollers Per Row	18
ISO Factor e	0.35
ISO Factor Y0	1.88
ISO Factor Y1	1.92
ISO Factor Y2	2.86
Bearing Weight	108.0 kg
Cage Type	EMB
Cage Material	Brass



23248EMBW27W507C08C3  
SRB ASSEMBLY

**THE TIMKEN COMPANY**  
NORTH CANTON, OHIO USA

Dynamic Radial Rating (Two Rows)	3050000	N
Static Radial Rating	4160000	N

Every reasonable effort has been made to ensure the accuracy of the information contained in this writing, but no liability is accepted for errors, omissions or for any other reason.

**FOR DISCUSSION ONLY**