


**The Timken Company**

4500 Mt Pleasant St. NW

N. Canton, OH 44720

**Phone:** (234) 262-3000

**E-Mail:** [CustomerCAD@timken.com](mailto:CustomerCAD@timken.com) • **Web site:** [www.timken.com](http://www.timken.com)
**Part Number 22207EJW33C2, Spherical Roller Bearings - Steel Cage**

Spherical bearings are designed to manage high radial loads even when misalignment, poor lubrication, contamination, extreme speeds or critical application stresses are present.



[Specifications](#) | [Factors](#) | [Dimensions](#) | [Abutment and Fillet Dimensions](#) | [Basic Load Ratings](#)

**Specifications**

<b>UPC Code</b>	087796304307
<b>Design Unit</b>	Metric
<b>d - Bore</b>	35 mm
<b>Lubrication Type</b>	Standard Grease
<b>Cage Type</b>	EJ
<b>Cage Material</b>	Steel
<b>Superseded Part</b>	22207CJW33C2

**Factors**


<b>e - ISO Factor<sup>1</sup></b>	0.31
-----------------------------------	------

<b>Y0 - ISO Factor<sup>2</sup></b>	2.16
<b>Y1 - ISO Factor<sup>3</sup></b>	2.21
<b>Y2 - ISO Factor<sup>4</sup></b>	3.29
<b>Reference Thermal Speed Rating (Grease)</b>	6900 rpm
<b>Reference Thermal Speed Rating (Oil)<sup>5</sup></b>	8600 rpm
<b>Cg - Geometry Factor<sup>6</sup></b>	0.041

## Dimensions

<b>D - Outer Diameter</b>	72 mm 2.8346 in
<b>B' - Inner Ring Width</b>	23 mm 0.9055 in
<b>B - Outer Ring Width</b>	23 mm 0.9055 in

## Abutment and Fillet Dimensions

<b>R - Inner Ring "To Clear" Radius<sup>7</sup></b>	1 mm 0.040 in
<b>r - Outer Ring "To Clear" Radius<sup>8</sup></b>	1 mm 0.04 in
<b>da - Inner Ring Backing Diameter</b>	45.000 mm 1.800 in
<b>Da - Outer Ring Backing Diameter</b>	65.00 mm 2.600 in

## Basic Load Ratings

<b>C0 - Static Radial Rating</b>	90500 N 20300 lbf
<b>C1(2) - Dynamic Radial Rating (Two-Rows)</b>	88000 N 19700 lbf

<sup>1</sup> These factors apply for both inch and metric calculations. Consult your Timken representative for instruction on use.

<sup>2</sup> These factors apply for both inch and metric calculations. See engineering

<sup>3</sup> These factors apply for both inch and metric calculations. Consult your Timken representative for instruction on use.

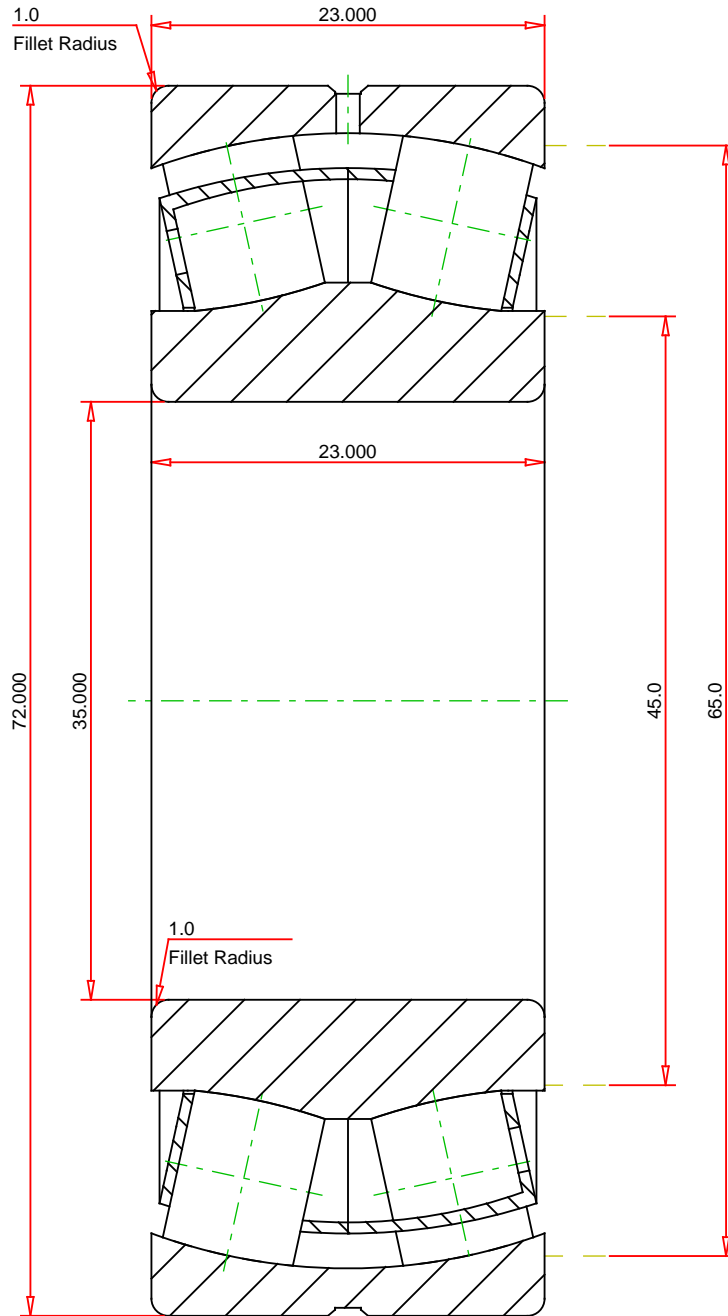
<sup>4</sup> These factors apply for both inch and metric calculations. Consult your Timken representative for instruction on use.

<sup>5</sup> See thermal speed ratings in the engineering section.

<sup>6</sup> Geometry constant for Lubrication Life Adjustment Factor a3l.

<sup>7</sup> Maximum housing fillet radius that bearing corners will clear.

<sup>8</sup> These maximum fillet radii will be cleared by the bearing corners.



METRIC UNITS

Number of Rollers Per Row	15
ISO Factor e	0.31
ISO Factor Y0	2.16
ISO Factor Y1	2.21
ISO Factor Y2	3.29
Bearing Weight	kg
Cage Type	EJ
Cage Material	Steel



22207EJW33C2  
SRB ASSEMBLY

THE TIMKEN COMPANY  
NORTH CANTON, OHIO USA

Dynamic Radial Rating (Two Rows)	88000	N
Static Radial Rating	90500	N

Every reasonable effort has been made to ensure the accuracy of the information contained in this writing, but no liability is accepted for errors, omissions or for any other reason.

FOR DISCUSSION ONLY