


The Timken Company

4500 Mt Pleasant St. NW

N. Canton, OH 44720

Phone: (234) 262-3000

E-Mail: CustomerCAD@timken.com • **Web site:** www.timken.com

Part Number 22330EJW33, Spherical Roller Bearings - Steel Cage

Spherical bearings are designed to manage high radial loads even when misalignment, poor lubrication, contamination, extreme speeds or critical application stresses are present.



[Specifications](#) | [Factors](#) | [Dimensions](#) | [Abutment and Fillet Dimensions](#) | [Basic Load Ratings](#)

Specifications

UPC Code	087796027558
Design Unit	Metric
d - Bore	150 mm
Lubrication Type	Standard Grease
Cage Type	EJ
Cage Material	Steel
Superseded Part	22330CJW33

Factors



e - ISO Factor¹	0.33
-----------------------------------	------

Y0 - ISO Factor²	2.03
Y1 - ISO Factor³	2.08
Y2 - ISO Factor⁴	3.09
Reference Thermal Speed Rating (Grease)	1500 rpm
Reference Thermal Speed Rating (Oil)⁵	1600 rpm
Cg - Geometry Factor⁶	0.0884

Dimensions

D - Outer Diameter	320 mm 12.5984 in
B' - Inner Ring Width	108 mm 4.252 in
B - Outer Ring Width	108 mm 4.2520 in

Abutment and Fillet Dimensions

R - Inner Ring "To Clear" Radius⁷	3 mm 0.120 in
r - Outer Ring "To Clear" Radius⁸	3 mm 0.12 in
da - Inner Ring Backing Diameter	194 mm 7.6000 in
Da - Outer Ring Backing Diameter	288 mm 11.3000 in

Basic Load Ratings

C0 - Static Radial Rating	1890000 N 424000 lbf
C1(2) - Dynamic Radial Rating (Two-Rows)	1620000 N 365000 lbf

¹ These factors apply for both inch and metric calculations. Consult your Timken representative for instruction on use.

² These factors apply for both inch and metric calculations. See engineering

³ These factors apply for both inch and metric calculations. Consult your Timken representative for instruction on use.

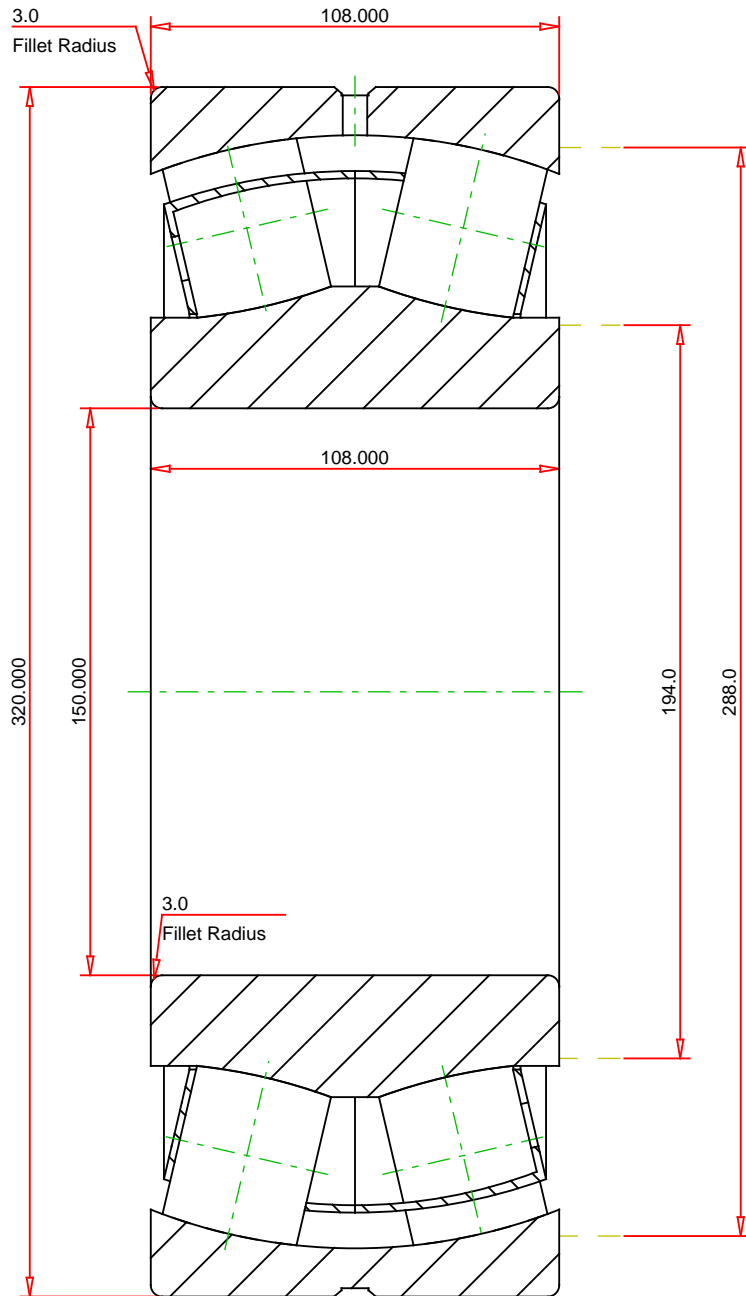
⁴ These factors apply for both inch and metric calculations. Consult your Timken representative for instruction on use.

⁵ See thermal speed ratings in the engineering section.

⁶ Geometry constant for Lubrication Life Adjustment Factor a3l.

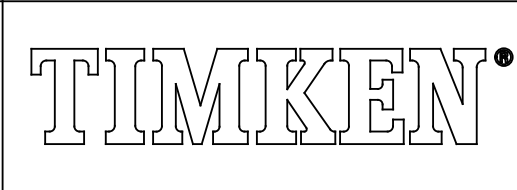
⁷ Maximum housing fillet radius that bearing corners will clear.

⁸ These maximum fillet radii will be cleared by the bearing corners.



METRIC UNITS

Number of Rollers Per Row	15
ISO Factor e	0.33
ISO Factor Y0	2.03
ISO Factor Y1	2.08
ISO Factor Y2	3.09
Bearing Weight	kg
Cage Type	EJ
Cage Material	Steel



THE TIMKEN COMPANY
NORTH CANTON, OHIO USA

22330EJW33 SRB ASSEMBLY	
Dynamic Radial Rating (Two Rows)	1620000 N
Static Radial Rating	1890000 N

Every reasonable effort has been made to ensure the accuracy of the information contained in this writing, but no liability is accepted for errors, omissions or for any other reason.

FOR DISCUSSION ONLY