


The Timken Company

4500 Mt Pleasant St. NW

N. Canton, OH 44720

Phone: (234) 262-3000

E-Mail: CustomerCAD@timken.com • **Web site:** www.timken.com
Part Number 22340EJW33W45AC2, Spherical Roller Bearings - Steel Cage

Spherical bearings are designed to manage high radial loads even when misalignment, poor lubrication, contamination, extreme speeds or critical application stresses are present.



[Specifications](#) | [Factors](#) | [Dimensions](#) | [Abutment and Fillet Dimensions](#) | [Basic Load Ratings](#)

Specifications

UPC Code	087796356566
Design Unit	Metric
d - Bore	200 mm
Lubrication Type	Standard Grease
Cage Type	EJ
Cage Material	Steel
Superseded Part	22340CJW33W45AC2

Factors


e - ISO Factor¹ 0.33

Y0 - ISO Factor²	1.98
Y1 - ISO Factor³	2.02
Y2 - ISO Factor⁴	3.01
Reference Thermal Speed Rating (Grease)	1000 rpm
Reference Thermal Speed Rating (Oil)⁵	1200 rpm
Cg - Geometry Factor⁶	0.1034

Dimensions

D - Outer Diameter	420 mm 16.5354 in
B' - Inner Ring Width	138 mm 5.4331 in
B - Outer Ring Width	138 mm 5.4331 in

Abutment and Fillet Dimensions

R - Inner Ring "To Clear" Radius⁷	4 mm 0.157 in
r - Outer Ring "To Clear" Radius⁸	4 mm 0.157 in
da - Inner Ring Backing Diameter	246.000 mm 9.700 in
Da - Outer Ring Backing Diameter	369.000 mm 14.520 in

Basic Load Ratings

C0 - Static Radial Rating	2930000 N 658000 lbf
C1(2) - Dynamic Radial Rating (Two-Rows)	2470000 N 556000 lbf

¹ These factors apply for both inch and metric calculations. Consult your Timken representative for instruction on use.

² These factors apply for both inch and metric calculations. See engineering

³ These factors apply for both inch and metric calculations. Consult your Timken representative for instruction on use.

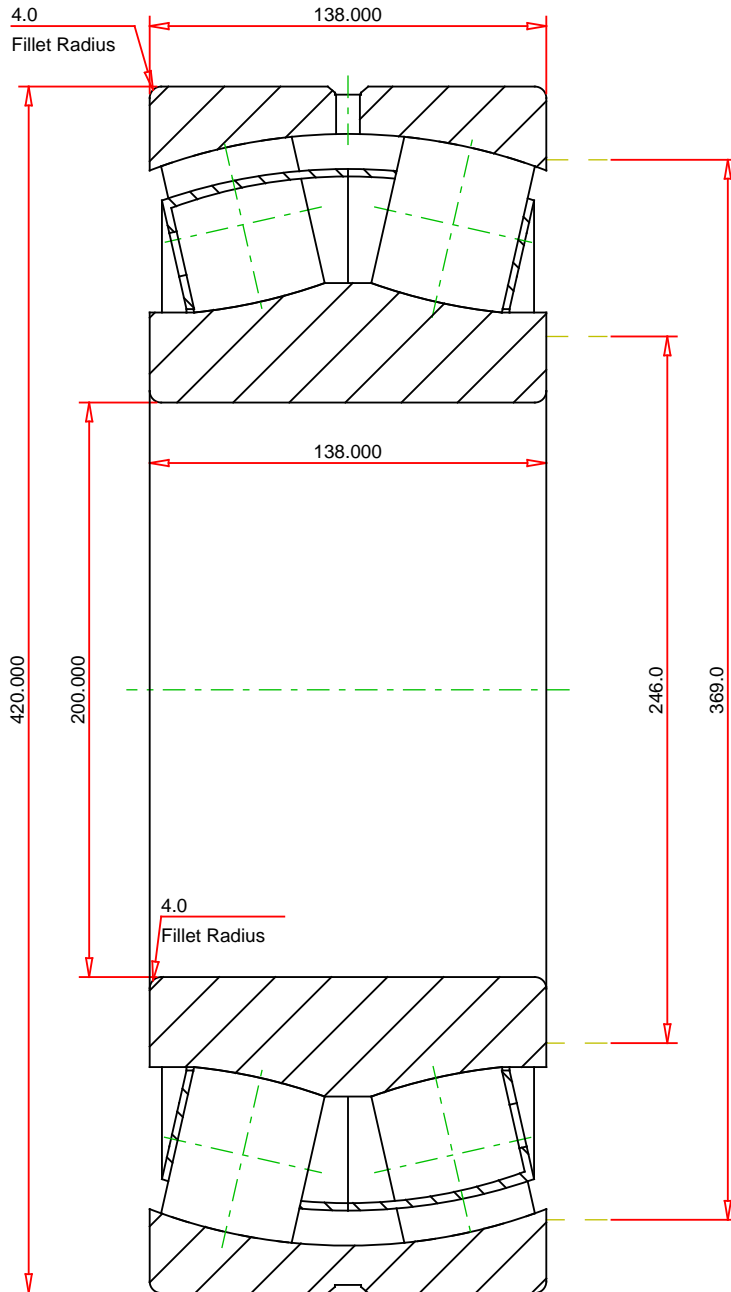
⁴ These factors apply for both inch and metric calculations. Consult your Timken representative for instruction on use.

⁵ See thermal speed ratings in the engineering section.

⁶ Geometry constant for Lubrication Life Adjustment Factor a_3 .

⁷ Maximum housing fillet radius that bearing corners will clear.

⁸ These maximum fillet radii will be cleared by the bearing corners.



METRIC UNITS

Number of Rollers Per Row	15
ISO Factor e	0.33
ISO Factor Y0	1.98
ISO Factor Y1	2.02
ISO Factor Y2	3.01
Bearing Weight	kg
Cage Type	EJ
Cage Material	Steel

TIMKEN®

THE TIMKEN COMPANY
NORTH CANTON, OHIO USA

22340EJW33W45AC2	
SRB ASSEMBLY	
Dynamic Radial Rating (Two Rows)	2470000 N
Static Radial Rating	2930000 N

Every reasonable effort has been made to ensure the accuracy of the information contained in this writing, but no liability is accepted for errors, omissions or for any other reason.

FOR DISCUSSION ONLY