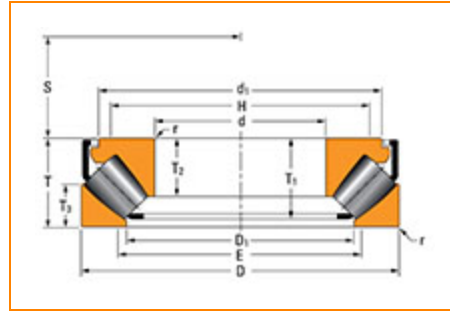
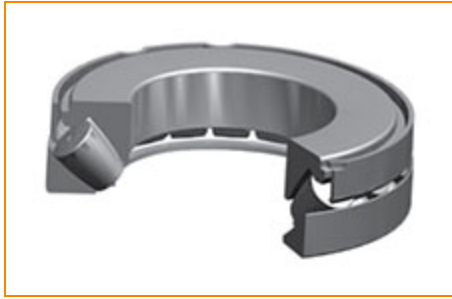


TIMKEN**The Timken Company**

4500 Mt Pleasant St. NW

N. Canton, OH 44720

Phone: (234) 262-3000**E-Mail:** CustomerCAD@timken.com • **Web site:** www.timken.com**Part Number 29422EJ, Thrust Spherical Roller Bearings-Type TSR**
[Specifications](#) | [Dimensions](#) | [Basic Load Ratings](#)
Specifications

d - Bore	110 mm
Bearing Type	Thrust Spherical Roller Bearings - TSR
UPC Code	87796224414

Dimensions

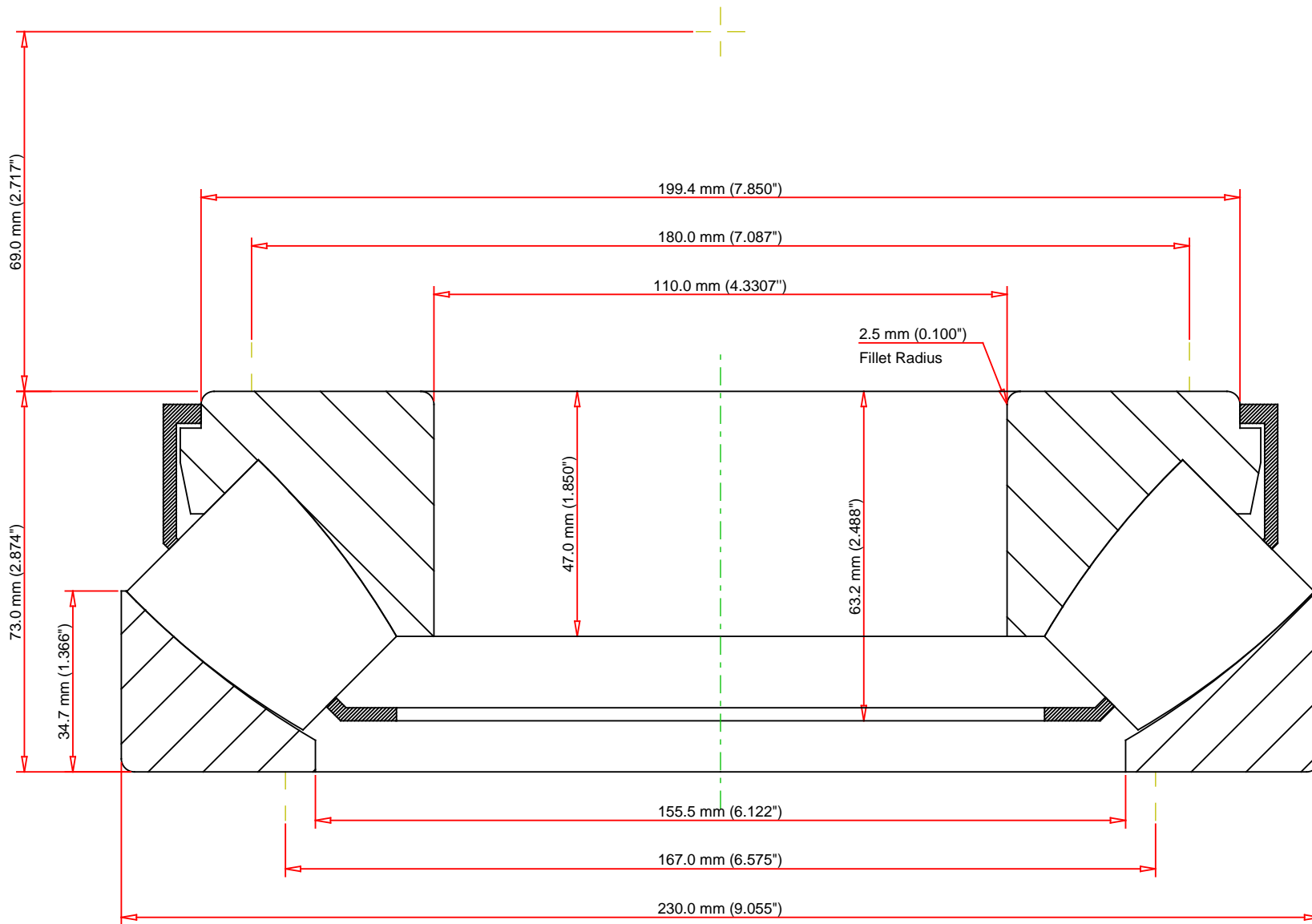
D - Outside Diameter	230 mm 9.055 in
d1 - Cone Outside Diameter	199.4 mm 7.85 in
D1 - Cup Bore	155.5 mm 6.122 in
E - Shoulder Diameter - Housing (Max)	167 mm 6.575 in
D - Shoulder Diameter - Shaft (Min)	180 mm 7.087 in



r - Fillet Radius	2.5 mm 0.1 in
S - Dimension	69 mm 2.717 in
T - Total Width	73 mm 2.874 in
T1 - Cage Position	63.2 mm 2.488 in
T3 - Cup Width	34.7 mm 1.366 in
T4 - Cone Width	47 mm 1.85 in

Basic Load Ratings

Static Load Rating	2840000 N 638000 lbf
Dynamic Load Rating	1200000 N 269000 lbf
Thermal Speed Rating	1700 rpm



METRIC UNITS

Static Load Rating - C_{0a}	638000	lbf	2840000	N
Dynamic Load Rating - C_a	269000	lbf	1200000	N
Weight	29.1	lb	13.2	kg

TIMKEN

THE TIMKEN COMPANY
NORTH CANTON, OHIO USA

29422EJ

Thrust Spherical Roller
Bearings-Type TSR

Every reasonable effort has been made to ensure the accuracy of the information contained in this writing, but no liability is accepted for errors, omissions or for any other reason.

FOR DISCUSSION ONLY