

# DeviceNet Media System

Bulletin Numbers 1485A, 1485C, 1485F, 1485G, 1485K, 1485P, 1485R, 1485T

| Topic                                 | Page |
|---------------------------------------|------|
| DeviceNet Flat Media System           | 2    |
| DeviceNet Round Media                 | 20   |
| DeviceNet Auxiliary Power Round Media | 35   |

# KwikLink™ Lite Flat Media Cable Spools

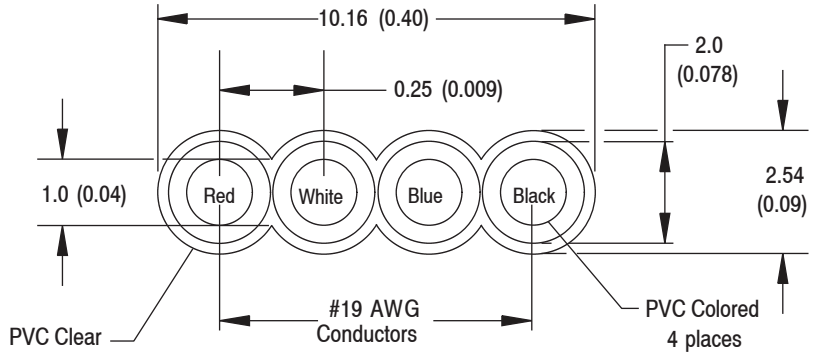


## Specifications

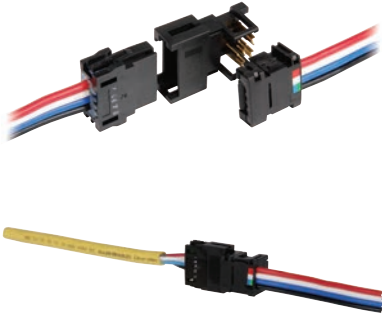
|                               |  |
|-------------------------------|--|
| Certifications                | UL and cUL Listed                                      |
| Cable Type                    | 4 conductor unshielded                                 |
| Contact Material              | Tinned annealed copper                                 |
| Cable Rating                  | CL2 2c/AWG 19 and 2c/AWG 21 90°C, CL2 and CM Certified |
| Home Run Connection           | 26 mm (1.02 in.)                                       |
| Operating Temperature [C (F)] | -10...+90 ° (14...194 °)                               |

## Approximate Dimensions

Dimensions are in millimeters (inches). Illustrations are not drawn to scale.



Trunk Line Connector, Drop-Line Connector, and Flat to Thin Round Converter IDC



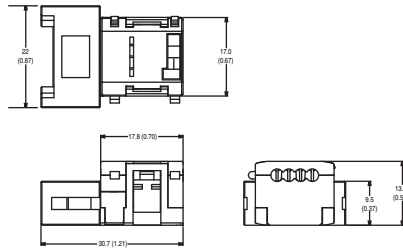
Specifications

|                                 |  |
|---------------------------------|--|
| <b>Safety Ratings</b>           |  |
| Certifications                  | UL Recognized                                    |
| <b>Physical Characteristics</b> |  |
| Connector Style                 | Housing:glass-fiber reinenforced PBT cover: PA66 |
| Contact Material                | Phosphor bronze/nickel substrate                 |
| <b>Electrical</b>               |  |
| Current Capacity                | 4 A  |
| Voltage                         | 30V DC   |
| <b>Environmental</b>            |  |
| Enclosure Type Rating           | IP20   |
| Vibration                       | 1.52 mm (0.06 in.) displacement, 10...500 Hz     |
| Operating Temperature [C (F)]   | -35...+55 ° (-31...+131 °)                       |
| Storage Temperature [C (F)]     | -35...+80 ° (-31...+176 °)                       |

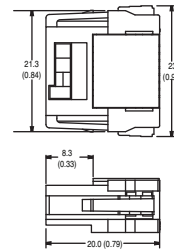
Approximate Dimensions

Dimensions are in millimeters (inches). Illustrations are not drawn to scale.

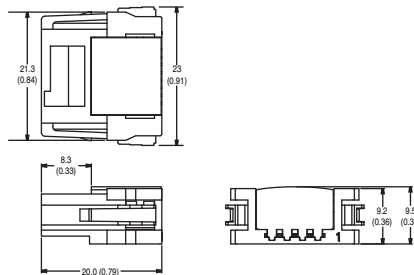
Trunk Line Connector



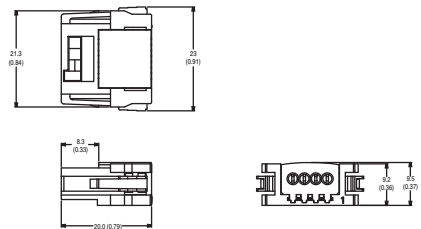
Drop Line Connector



Terminating Resistor

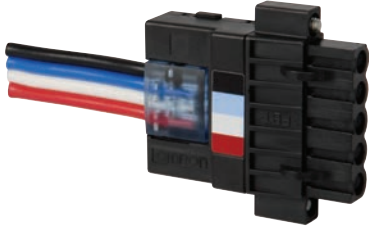


Flat Media to Round Converter



# KwikLink™ Lite Flat Media

## Five-Pin Open-Style Connector



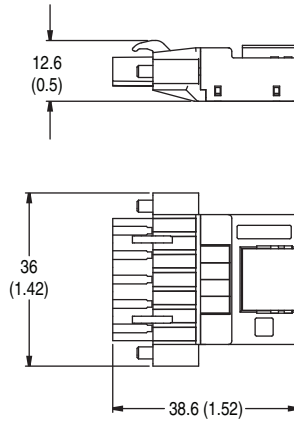
Open-Style Connector, IDC

### Specifications

| Safety Ratings                |                                 |
|-------------------------------|---------------------------------|
| Certifications                | UL Recognized                   |
| Physical Characteristics      |                                 |
| Connector Style               | Housing: PBT -V0                |
| Contact Material              | Gold-plated                     |
| Electrical                    |                                 |
| Current Capacity              | 4 A                             |
| Voltage                       | 25V DC                          |
| Environmental                 |                                 |
| Enclosure Type Rating         | IP20                            |
| Vibration                     | 0.75 mm (0.03 in.), 10...500 Hz |
| Operating Temperature [C (F)] | -40...+100 ° (-40...+212 °)     |
| Storage Temperature [C (F)]   | -40...+100 ° (-40...+212 °)     |

### Approximate Dimensions

Dimensions are in millimeters (inches). Illustrations are not drawn to scale.





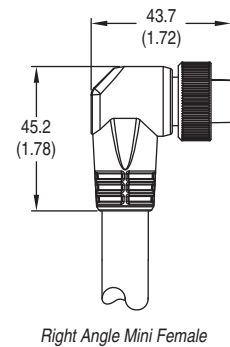
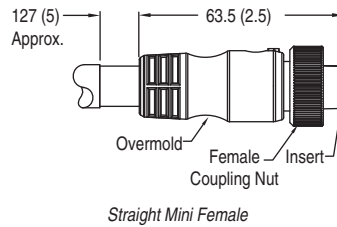
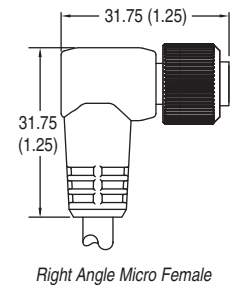
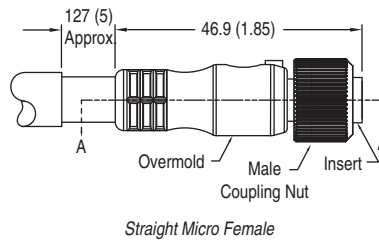
KwikLink Lite Drop Cordset

Specifications

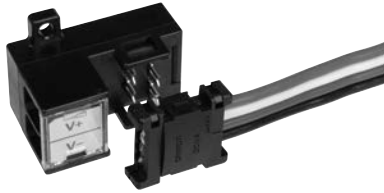
| Physical Characteristics   |  |
|----------------------------|--|
| Coupling Nut Material      | Epoxy-coated zinc  |
| Connector Material         | Molded oil-resistant PUR   |
| Contact Material           | Gold-plated palladium nickel   |
| Cable Type                 | Oil resistant grey PVC jacket, unshielded, 22 AWG power conductors, 24 AWG signal conductors |
| Cable Diameter [mm (in.)]  | 6 (0.24)   |
| Electrical                 |  |
| Current Capacity           | 4 A  |
| Environmental              |  |
| Temperature Rating [C (F)] | -20...+80 ° (-4...+176 °)  |

Approximate Dimensions

Dimensions are in millimeters (inches). Illustrations are not drawn to scale.



# KwikLink™ Lite Flat Media Terminal Block IDC



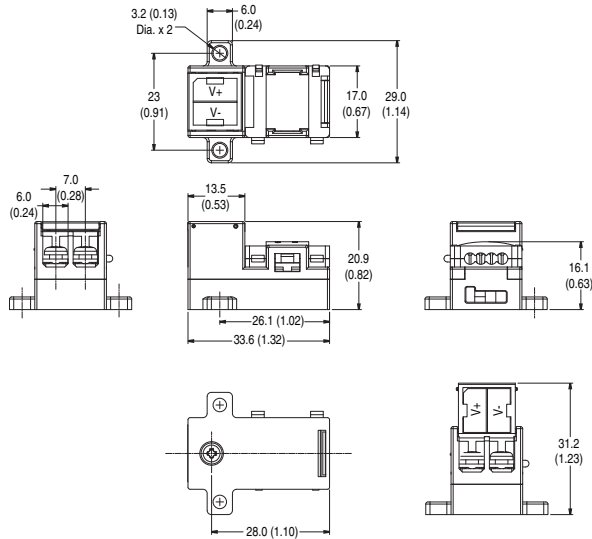
Power Input

## Specifications

| Safety Ratings                |   |
|-------------------------------|---|
| Certifications                | UL Recognized   |
| Physical Characteristics      |   |
| Connector Style               | Contact area: phosphor bronze/nickel under plated, gold plated;<br>Terminal area: phosphor bronze/nickel under plated, gold flash plating |
| Contact Material              | Phosphor bronze/nickel substrate  |
| Electrical                    |   |
| Current Capacity              | 4 A   |
| Voltage                       | 30V DC  |
| Environmental                 |   |
| Enclosure Type Rating         | IP20  |
| Vibration                     | 1.52 mm (0.06 in.) displacement, 10...500 Hz  |
| Operating Temperature [C (F)] | -35...+55 ° (-31...+131 °)  |
| Storage Temperature [C (F)]   | -35...+80 ° (-31...+176 °)  |

## Approximate Dimensions

Dimensions are in millimeters (inches). Illustrations are not drawn to scale.





**Class 1 Flat Cable**



**Class 2 Flat Cable**



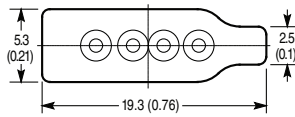
**Auxiliary Power Flat Cable**

### Specifications

|                               |  |
|-------------------------------|--|
| Certifications                | UL Listed and CSA Certified  |
| Cable Type                    | 4-conductor unshielded   |
| Cable Rating                  | CL1: 4C16, UL TC 600V 75C wet sunlight resistant, cUL FT4<br>CL2: 4C16, UL CL2 75C, CSA AWM I/II A/B 80C 300V FT4<br>Auxiliary Power: 4C16, UL TC 600V 75C wet sunlight resistant, cUL Type<br>CIC TPE FT4 |
| Operating Temperature [C (F)] | -25...+75 ° (-13...+167 °)   |

### Approximate Dimensions

Dimensions are in millimeters (inches). Illustrations are not drawn to scale.



# KwikLink™ General Purpose Flat Media Connectors



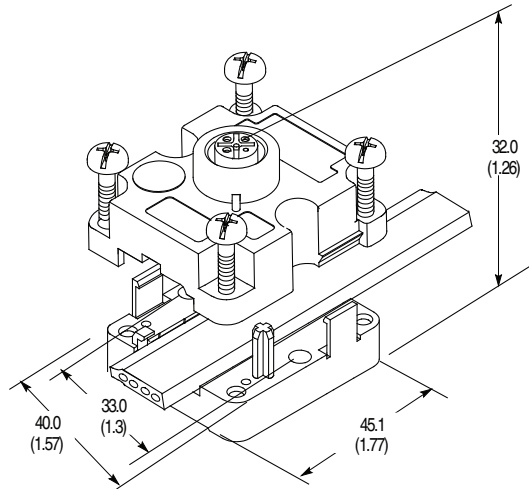
**KwikLink General Purpose**

## Specifications

|                                  |  |
|----------------------------------|--|
| Storage Temperature [C (F)]      | -40...+85 ° (-40...+185 °)   |
| Installation Temperature [C (F)] | 0...50 ° (32...122 °)  |
| Operating Temperature [C (F)]    | -25...+75 ° (-13...+167 °)   |
| Enclosure Type Rating            | IP67   |
| Vibration                        | 0.35 mm (0.014 in.) displacement @ 10...150Hz, 3 planes                        |
| Connector Material               | Cover: Glass-filled polyester, type PBT<br>Base: Glass-filled nylon, type PA66 |
| Installation Torque              | 1.1...1.3 N·m (10...12 in·lb)  |
| Dimensions                       | 45 x 40 x 32 mm (1.8 x 1.6 x 1.3 in.)  |

## Approximate Dimensions

Dimensions are in millimeters (inches). Illustrations are not drawn to scale.





# KwikLink™ General Purpose Flat Media Drop Cable



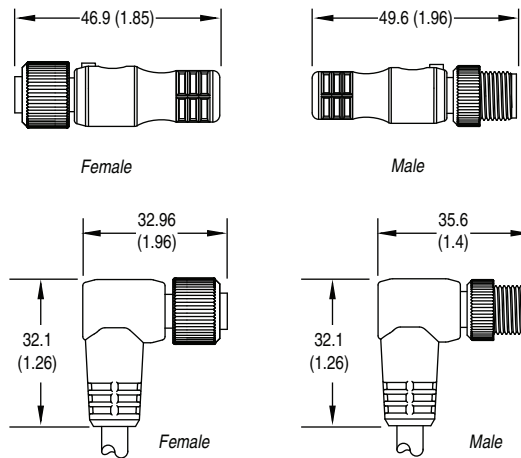
**KwikLink Drop Cable**

## Specifications

|                            |  |
|----------------------------|--|
| Coupling Nut Material      | Epoxy-coated zinc  |
| Connector Material         | Molded oil-resistant PUR   |
| Contact Material           | Gold over nickel-plated brass  |
| Cable Type                 | Oil-resistant grey PVC jacket, unshielded, 22 AWG power conductors, 24 AWG signal conductors |
| Cable O.D.                 | 6 mm (0.24 in.)  |
| Temperature Rating [C (F)] | -20...+80 ° (-4...176 °)   |
| Current, Max               | 3 A  |

## Approximate Dimensions

Dimensions are in millimeters (inches). Illustrations are not drawn to scale.



# KwikLink™ General Purpose Flat Media

## Micro Auxiliary Power Cordsets & Patchcords



4-Pin DC Micro Patchcord

### Specifications

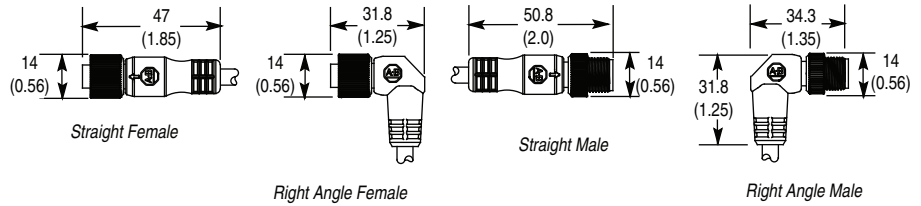
|                            |   |
|----------------------------|---|
| Certifications             | UL Recognized and CSA Certified   |
| <b>Mechanical</b>          |   |
| Coupling Nut Material      | Epoxy-coated zinc   |
| Connector Material         | Molded PUR  |
| Contact Material           | Gold over nickel-plated brass   |
| Cable Type                 | Oil-resistant PVC jacket, PVC insulated conductors, 300V                                    |
| Cable Diameter [mm (in.)]  | 5 (0.21)  |
| Bend Radius                | 10 x diameter   |
| <b>Electrical</b>          |   |
| Cable Rating               | UL AWM style 2661 VW-1 105C 300V, CSA AWM A/B I/II 80C 300V FT1, UV oil and water resistant |
| Assembly Rating            | 250V, 4 A   |
| <b>Environmental</b>       |   |
| Enclosure Type Rating      | IP67, NEMA 6P, 1200 psi (8270 kPa) washdown   |
| Temperature Rating [C (F)] | -20...+105 ° (-4...+221 °)  |

### Wiring Diagrams

| Male                    | Female |
|-------------------------|--------|
| 1 <---No connection---< | 1      |
| 2 <-----Brown-----<     | 2      |
| 3 <-----Blue-----<      | 3      |
| 4 <---No connection---< | 4      |
| 5 <---No connection---< | 5      |

### Approximate Dimensions

Dimensions are in millimeters (inches). Illustrations are not drawn to scale.





**Class 1 Flat Cable**



**Class 2 Flat Cable**



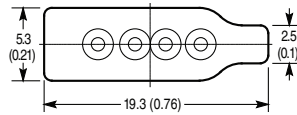
**Auxiliary Power Flat Cable**

### Specifications

|                               |  |
|-------------------------------|--|
| Certifications                | UL Listed and CSA Certified  |
| Cable Type                    | 4-conductor unshielded   |
| Cable Rating                  | CL1: 4C16, UL TC 600V 75C wet sunlight resistant, cUL FT4<br>CL2: 4C16, UL CL2 75C, CSA AWM I/II A/B 80C 300V FT4<br>Auxiliary Power: 4C16, UL TC 600V 75C wet sunlight resistant, cUL Type<br>CIC TPE FT4 |
| Operating Temperature [C (F)] | -25...+75 ° (-13...+167 °)   |

### Approximate Dimensions

Dimensions are in millimeters (inches). Illustrations are not drawn to scale.



# KwikLink™ Heavy Duty Flat Media Trunk Splice Kit



Splice Kit

## Specifications

|                               |  |
|-------------------------------|--|
| Storage Temperature [C (F)]   | -40...+85 ° (-40...+185 °)                           |
| Operating Temperature [C (F)] | -25...+75 ° (-13...+167 °)                           |
| Enclosure Type Rating         | Unsealed: NEMA 1; IP60 (IEC 529)                     |
| Vibration                     | 1.5 mm displacement @ 10 500 Hz, 10 G peak, 3 planes |
| Material                      | Valox®   |
| Jacket Material               | Grey PVC   |
| Dimensions                    | 45 x 49 x 59 mm (1.8 x 1.8 x 2.3 in.)                |

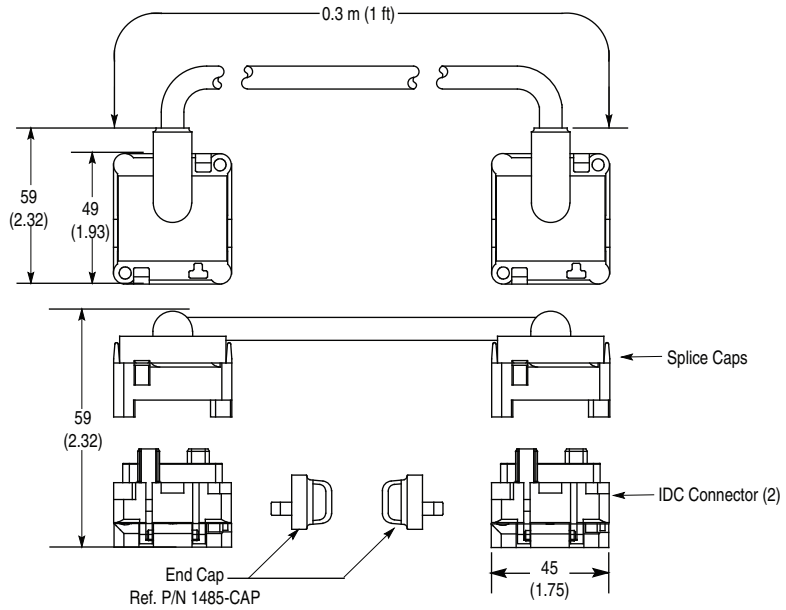
## Wiring Diagrams

V+ (Red) V+  
 Can-H (White) Can-H  
 Can-L (Blue) Can-L  
 V- (Black) V-

V+ (No Connection) V+  
 Can-H (White) Can-H  
 Can-L (Blue) Can-L  
 V- (Black) V-

## Approximate Dimensions

Dimensions are in millimeters (inches). Illustrations are not drawn to scale.



# KwikLink™ Heavy Duty Flat Media Insulation Displacement Connectors



*Micro Style IDC*



*Open Style IDC*



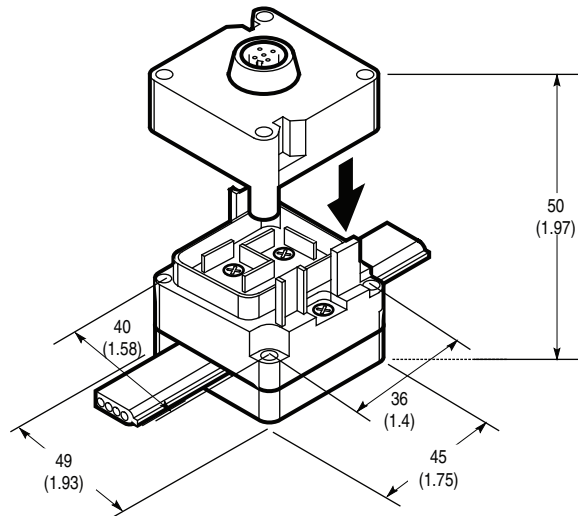
*Terminator*

## Specifications

|                               |   |
|-------------------------------|---|
| Storage Temperature [C (F)]   | -40...+85 ° (-40...+185 °)  |
| Operating Temperature [C (F)] | -25...+75 ° (-13...+167 °)  |
| Enclosure Type Rating         | Unsealed: NEMA 1; IP60 (IEC 529)<br>Sealed: NEMA 6P, 13, IP67 and 1200 psi washdown |
| Vibration                     | 1.5 mm displacement @ 10...500 Hz, 10 G peak, 3 planes                              |
| Material                      | Valox®  |
| Dimensions                    | 45 x 49 x 50 mm (1.8 x 1.8 x 2 in.)   |

## Approximate Dimensions

Dimensions are in millimeters (inches). Illustrations are not drawn to scale.



# KwikLink™ Heavy Duty Flat Media

## Pigtail Drop—Insulation Displacement Connectors



Mini Style Pigtail Drop IDC



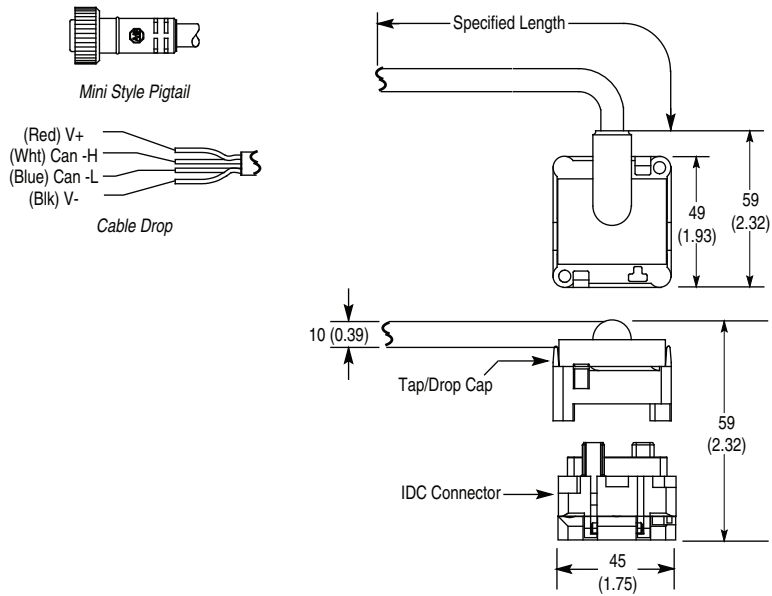
Cable Drop IDC

### Specifications

|                               |  |
|-------------------------------|--|
| Storage Temperature [C (F)]   | -40...+85 ° (-40...+185 °)   |
| Operating Temperature [C (F)] | -25...+75 ° (-13...+167 °)   |
| Enclosure Type Rating         | Sealed: NEMA 6P, 13; IP67 (IEC 529) and 1200 psi (8270 kPa) washdown<br>Sealed: NEMA 6P, 13; IP67 (IEC 529) and 1200 psi (8270 kPa) washdown |
| Vibration                     | 1.5 mm displacement @ 10...500 Hz, 10 G peak, 3 planes   |
| Material                      | Valox®   |
| Dimensions                    | 45 x 49 x 59 mm (1.8 x 1.8 x 2.3 in.)  |

### Approximate Dimensions

Dimensions are in millimeters (inches). Illustrations are not drawn to scale.





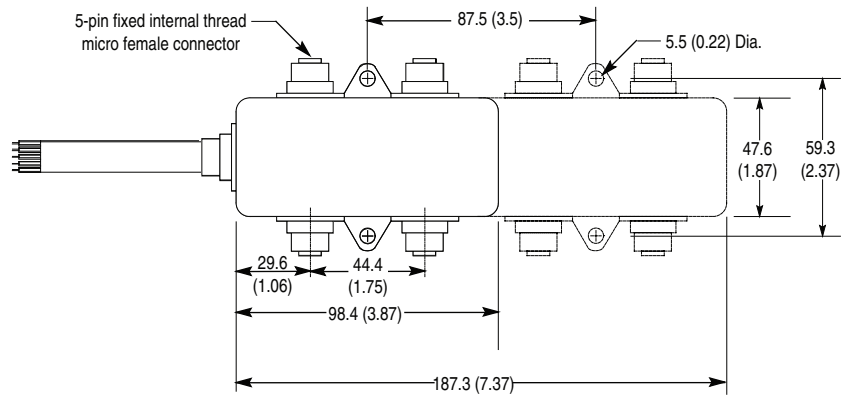
4- and 8-Port DevicePorts with Cable Drop

## Specifications

|                               |  |
|-------------------------------|--|
| Storage Temperature [C (F)]   | -40...+85 ° (-40...+185 °)   |
| Operating Temperature [C (F)] | -25...+70 ° (-13...+158 °)   |
| Enclosure Type Rating         | NEMA 4, 6P and 1200 psi (8270 kPa), 3.5 GPM, (60°C) 140°F temperature washdown; IP67 (IEC 529) |
| Vibration                     | 30...120 Hz  |
| Shock                         | 5 g  |
| Material                      | Chemical resistant black polymer   |

## Approximate Dimensions

Dimensions are in millimeters (inches). Illustrations are not drawn to scale.



# KwikLink™ Heavy Duty Flat Media Drop Cable



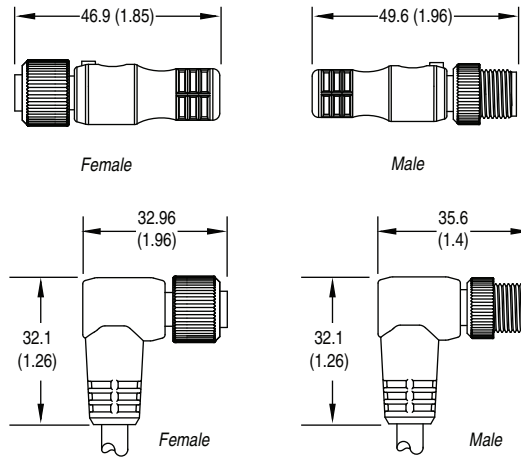
**KwikLink Drop Cable**

## Specifications

|                            |  |
|----------------------------|--|
| Coupling Nut Material      | Epoxy-coated zinc  |
| Connector Material         | Molded oil-resistant PUR   |
| Contact Material           | Gold over nickel-plated brass  |
| Cable Type                 | Oil-resistant grey PVC jacket, unshielded, 22 AWG power conductors, 24 AWG signal conductors |
| Cable O.D.                 | 6 mm (0.24 in.)  |
| Temperature Rating [C (F)] | -20...+80 ° (-4...+176 °)  |
| Current, Max               | 3 A  |

## Approximate Dimensions

Dimensions are in millimeters (inches). Illustrations are not drawn to scale.







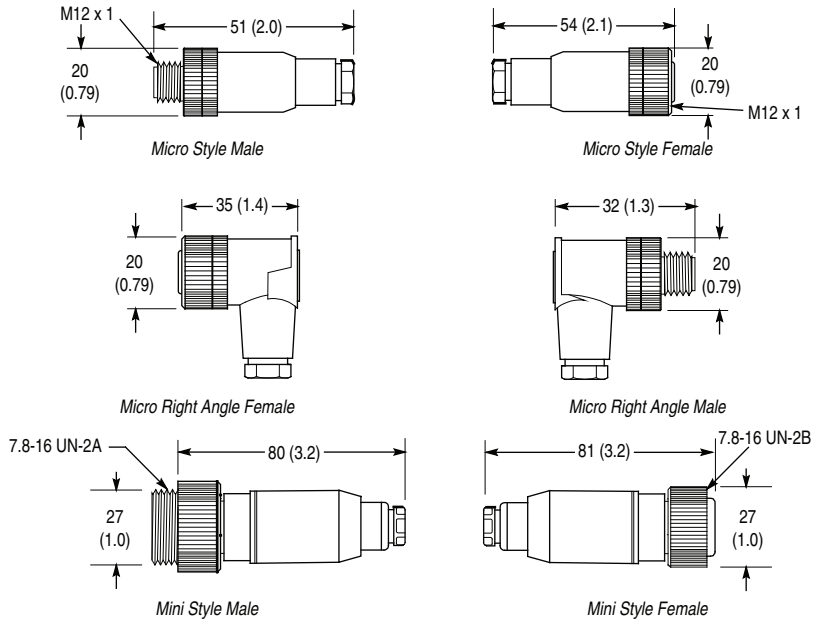
**Straight Female Micro Style Terminal Chamber**

## Specifications

|                               |   |
|-------------------------------|---|
| Coupling Nut Material         | Micro: Nickel-plated brass; Mini: Anodized aluminum |
| Connector Shell Material      | Nylon   |
| Contact Material              | Gold-plated palladium/nickel                        |
| Enclosure Type Rating         | NEMA 6; IP67 (IEC 529)                              |
| Operating Temperature [C (F)] | -40...+90 ° (-40...+194 °)                          |

## Approximate Dimensions

Dimensions are in millimeters (inches). Illustrations are not drawn to scale.



# KwikLink™ Heavy Duty Flat Media

## Micro Auxiliary Power Cordsets & Patchcords



4-Pin DC Micro Patchcord

### Specifications

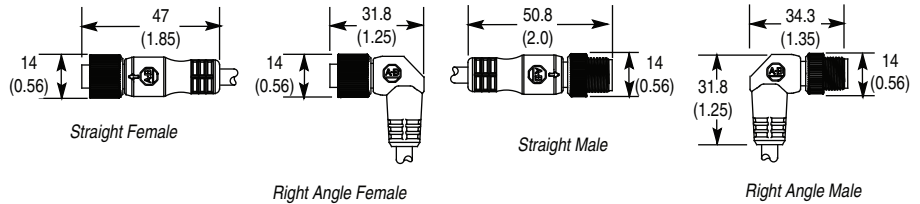
|                            |   |
|----------------------------|---|
| Certifications             | UL Recognized and CSA Certified   |
| <b>Mechanical</b>          |   |
| Coupling Nut Material      | Epoxy-coated zinc   |
| Connector Material         | Molded PUR  |
| Contact Material           | Gold over nickel-plated brass   |
| Cable Type                 | Oil-resistant PVC jacket, PVC insulated conductors, 300V                                    |
| Cable Diameter [mm (in.)]  | 5 (0.21)  |
| Bend Radius                | 10 x diameter   |
| <b>Electrical</b>          |   |
| Cable Rating               | UL AWM style 2661 VW-1 105C 300V, CSA AWM A/B I/II 80C 300V FT1, UV oil and water resistant |
| Assembly Rating            | 250V, 4 A   |
| <b>Environmental</b>       |   |
| Enclosure Type Rating      | IP67, NEMA 6P, 1200 psi (8270 kPa) washdown   |
| Temperature Rating [C (F)] | -20...+105 ° (-4...+221 °)  |

### Wiring Diagrams

| Male                  | Female |
|-----------------------|--------|
| 1 <--No connection--< | 1      |
| 2 <-----Brown-----<   | 2      |
| 3 <-----Blue-----<    | 3      |
| 4 <--No connection--< | 4      |
| 5 <--No connection--< | 5      |

### Approximate Dimensions

Dimensions are in millimeters (inches). Illustrations are not drawn to scale.



# KwikLink™ Heavy Duty Flat Media Auxiliary Power Insulation Displacement Connectors



## Specifications

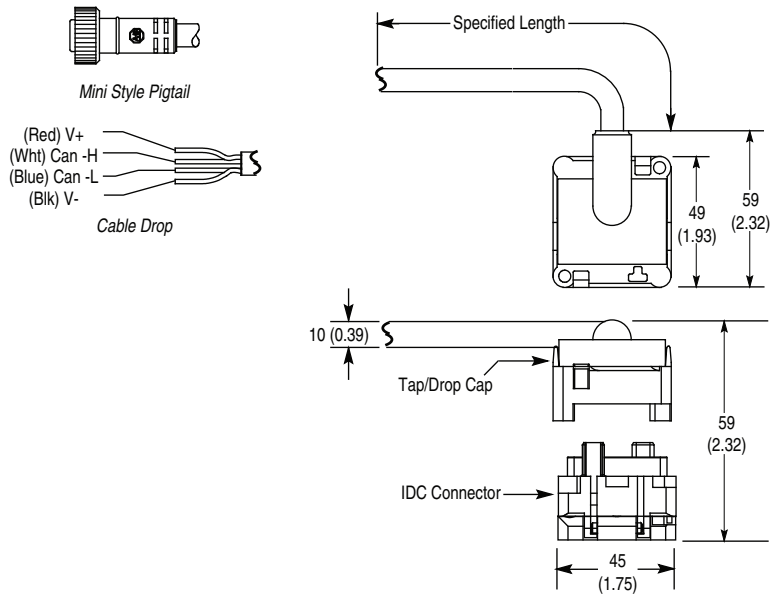
|                           |   |
|---------------------------|---|
| Cable Temperature [C (F)] | -25...+75 ° (-13...+167 °)  |
| Enclosure Type Rating     | NEMA 6P, 13; IP67 (IEC 529) and 1200 psi (8270 kPa) washdown  |
| Vibration                 | 1.5 mm displacement @ 10...500 Hz, 10 G peak, 3 planes  |
| Material                  | Valox®  |
| Cable Type                | Oil resistant yellow PVC jacket, 16 AWG stranded copper, 600V, UL Recognized and CSA Certified, ST00W-A |
| Dimensions                | 45 x 49 x 59 mm (1.8 x 1.8 x 2.3 in.)   |

## Wiring

| Device End    | Flat Cable |
|---------------|------------|
| Black (pin 1) | Black      |
| White (pin 2) | Blue       |
| Red (pin 3)   | Red        |
| Green (pin 4) | White      |

## Approximate Dimensions

Dimensions are in millimeters (inches). Illustrations are not drawn to scale.



# Cordsets & Patchcords, Round Media Cable Spools

## Thick Trunk Cable



Thick Trunk Cable



Mini to Mini Thick Patchcord

### Specifications

|                           |  |
|---------------------------|--|
| Certifications            | UL Recognized and CSA Certified  |
| <b>Mechanical</b>         |  |
| Coupling Nut Material     | Epoxy-coated zinc  |
| Jacket Material           | Grey PVC   |
| No. of Conductors         | 1 pair 15 AWG, 1 pair 18 AWG, and drain  |
| Contact Material          | Gold-plated machined brass   |
| Cable Diameter [mm (in.)] | Thick: 12.2 (0.48); ODVA Type V: 13.5 (0.53)   |
| Bend Radius               | 10 x diameter  |
| <b>Electrical</b>         |  |
| Cable Rating              | <b>Thick:</b> UL-Type PLTC 300V or CM 75 °C (167 °F) or AWM style 2464, CSA-AWM I/II A/B 80 °C (176 °F) 300V FT1, Class 2 Type<br><b>Thick Flex Rated:</b> UL-Type PLTC 75C or AWM 80C 600V, CSA AWM I/II A/B 80C 600V, FT4 Oil Res II<br>ODVA Type V, Open-Wiring Compliant: UL 600V TC-ER 75C Sunlight Resistant, c(UL) AWM I/II A/B 75C 600V FT1<br><b>ODVA Type V Cable:</b> Type V Trunk Cable, UL 600V Type TC-ER Sunlight Resistant 75 °C Dry Open Wiring, CSA AWM I/II A/B 75 °C 600V FT1, Oil Resistant, Class 1 Type |
| Assembly Rating           | Thick: 300V, 8 A (4A NEC)  |
| <b>Environmental</b>      |  |
| Enclosure Type Rating     | NEMA 1, 2, 3, 4, 6P, 12, 13; IP67; 1200 psi (8720 kPa) washdown  |
| Cable Temperature [C (F)] | -20...+70 ° (-15...+158 °)   |

### Approximate Dimensions

Dimensions are in millimeters (inches). Illustrations are not drawn to scale.

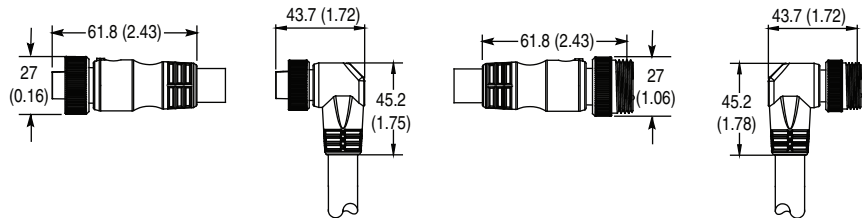
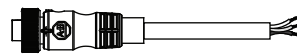


Figure A  
Straight Female

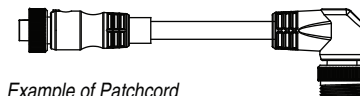
Figure B  
Right Angle Female

Figure C  
Straight Male

Figure D  
Right Angle Male



Example of Cordset



Example of Patchcord

### Pinout and Color Code

| Face View Pinout  |  |
|-------------------|--|
|                   |  |
| Mini Connector    |  |
| Female            | Male   |
| <b>Color Code</b> | 1 Drain<br>2 Red (V+)<br>3 Black (V-)<br>4 White (CAN_H)<br>5 Blue (CAN_L) |

# Cordsets & Patchcords, Round Media Cable Spools

## Thin Trunk Cable



Thin Cable



Mini to Mini Thin Cordset

### Specifications

|                           |  |
|---------------------------|--|
| Certifications            | UL Recognized and CSA Certified  |
| <b>Mechanical</b>         |  |
| Coupling Nut Material     | Epoxy-coated zinc  |
| Jacket Material           | Yellow CPE (chemical resistant) or grey PVC  |
| No. of Conductors         | 1 pair 22 AWG, 1 pair 24 AWG and drain   |
| Contact Material          | Mini: Gold-plated machined brass; Micro: Gold over nickel-plated brass   |
| Cable Diameter [mm (in.)] | 6.9 (0.27)   |
| Bend Radius               | 10 x diameter  |
| Current, Max              | 4 A  |
| <b>Electrical</b>         |  |
| Cable Rating              | <b>Grey PVC:</b> UL CL2 or CMG 75 °C (167 °F) or AWM 600V or c(UL) CMG or AWM I/II 80 °C (176 °F) 300V FT4;<br><b>Grey High-Flex PVC:</b> UL CL2 75 °C (167 °F) or AWM 20201 80 °C (176 °F) 600V or CSA AWM I/II 80 °C (176 °F) 600V FT4;<br><b>Yellow CPE:</b> UL- CL2 or CM 75 °C (167 °F) or AWM 20869 80 °C (176 °F), CSA- AWM I/II A/B 80 °C (176 °F) 300V FT4 Oil Res II |
| Assembly Rating           | 250V, 4 A  |
| <b>Environmental</b>      |  |
| Enclosure Type Rating     | NEMA 1, 2, 3, 4, 6P, 12, 13; IP67; 1200 psi (8720 kPa) washdown  |
| Cable Temperature [C (F)] | -20...+70 ° (-15...+158 °)   |

### Approximate Dimensions

Dimensions are in millimeters (inches). Illustrations are not drawn to scale.

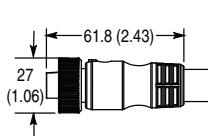


Figure A  
Straight Female

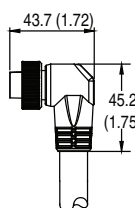


Figure B  
Right Angle Female

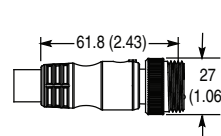


Figure C  
Straight Male

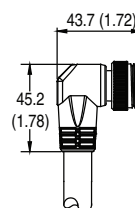


Figure D  
Right Angle Male

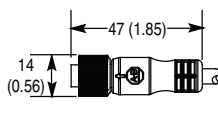


Figure E  
Straight Female

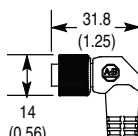


Figure F  
Right Angle Female

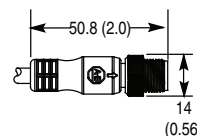


Figure G  
Straight Male

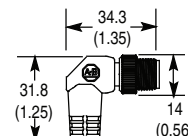


Figure H  
Right Angle Male

### Pinout and Color Code

|                   |  | Face View Pinout      |             |                        |                 |
|-------------------|--|-----------------------|-------------|------------------------|-----------------|
|                   |  |                       |             |                        |                 |
|                   |  | <b>Mini Connector</b> |             | <b>Micro Connector</b> |                 |
|                   |  | <b>Female</b>         | <b>Male</b> | <b>Female</b>          | <b>Male</b>     |
| <b>Color Code</b> |  |                       |             | 1 Drain                | 4 White (CAN_H) |
|                   |  |                       |             | 2 Red (V+)             | 5 Blue (CAN_L)  |
|                   |  |                       |             | 3 Black (V-)           |                 |

# Receptacles, Round Media

## Thick and Thin Cable



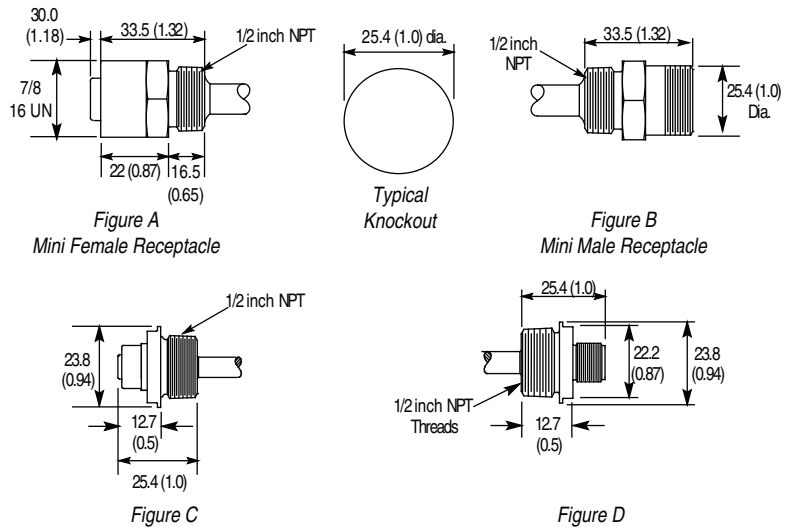
Mini Female Thin Receptacle

### Specifications

|                               |  |
|-------------------------------|--|
| Certifications                | UL Recognized and CSA Certified  |
| <b>Mechanical</b>             |  |
| Material                      | Thick: Grey PVC; Thin: Grey PVC or Yellow CPE  |
| Jacket Material               | Thick: Grey PVC; Thin: Grey PVC or Yellow CPE  |
| No. of Conductors             | Thick: 1 pair 15 AWG, 1 pair 18 AWG, and drain;<br>Thin: 1 pair 22 AWG, 1 pair 24 AWG, and drain   |
| Contact Material              | Mini: Gold-plated machined brass; Micro: Gold over nickel-plated brass   |
| Cable Diameter [mm (in.)]     | Thick: 11.2 (0.44); Thin: 6.9 (0.27)   |
| Bend Radius                   | 10 x diameter  |
| Current, Max                  | Thick: 8 A (4A NEC); Thin: 3 A   |
| <b>Electrical</b>             |  |
| Cable Rating                  | Thick: UL-Type PLTC 300V or CM 75 °C (167 °F) or AWM style 2464, CSA-AWM I/II A/B 80 °C (176 °F) 300V FT1;<br>Thin, Grey PVC: UL- CM 75 °C (167 °F) or AWM 2464, CSA- SWM II A/B 80 °C (176 °F) 300V FT4;<br>Thin, Yellow CPE: UL- CL2 or CM 75 °C (167 °F) or AWM 20869 80 °C (176 °F), CSA- AWM I/II A/B 80 °C (176 °F) 30 |
| Assembly Rating               | Thick: 300V, 9 A (4 A NEC); Thin: (250V, 4 A   |
| <b>Environmental</b>          |  |
| Enclosure Type Rating         | NEMA 1, 2, 3, 4, 6P, 12, 13; IP67, 1200 psi (8720 kPa) washdown  |
| Operating Temperature [C (F)] | -40...+80 ° (-40...+176 °)   |

### Approximate Dimensions

Dimensions are in millimeters (inches). Illustrations are not drawn to scale.



### Pinout and Color Code

| Face View Pinout      |             |                        |             |
|-----------------------|-------------|------------------------|-------------|
|                       |             |                        |             |
| <b>Mini Connector</b> |             | <b>Micro Connector</b> |             |
| <b>Female</b>         | <b>Male</b> | <b>Female</b>          | <b>Male</b> |
|                       |             | 1 Drain                |             |
|                       |             | 2 Red (V+)             |             |
|                       |             | 3 Black (V-)           |             |
|                       |             | 4 White (CAN_H)        |             |
|                       |             | 5 Blue (CAN_L)         |             |



**Straight Female Micro Style**



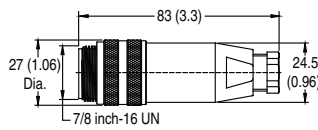
**Female Mini Style**

## Specifications

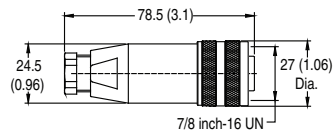
| <b>Mechanical</b>             |   |
|-------------------------------|---|
| Coupling Nut Material         | Micro: nickel-plated brass; Mini: anodized aluminum           |
| Connector Shell Material      | Nylon   |
| Contact Material              | Mini: Gold-plated brass; Micro: Gold over nickel-plated brass |
| Shock                         | 5 g   |
| Vibration                     | 30...120 Hz   |
| <b>Electrical</b>             |   |
| Assembly Rating               | Mini: 250V, 9 A; Micro: 125V, 4 A                             |
| <b>Environmental</b>          |   |
| Enclosure Type Rating         | NEMA 6; IP67 (IEC 529)  |
| Operating Temperature [C (F)] | -25...+70 ° (-13...+158 °)                                    |

## Approximate Dimensions

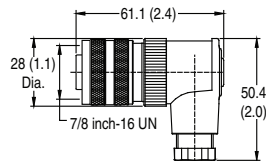
Dimensions are in millimeters (inches). Illustrations are not drawn to scale.



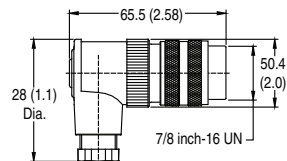
**Figure A**  
Mini Style Female



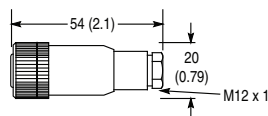
**Figure B**  
Mini Style Male



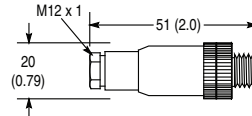
**Figure C**  
Micro Style Female



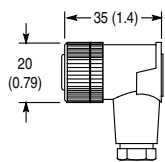
**Figure D**  
Micro Style Male



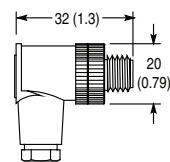
**Figure E**  
Micro Style Female



**Figure F**  
Micro Style Male



**Figure G**  
Micro Right Angle Female



**Figure H**  
Micro Right Angle Male

## Pinout and Color Code

|                   |  | <b>Face View Pinout</b> |             |                        |                 |
|-------------------|--|-------------------------|-------------|------------------------|-----------------|
|                   |  |                         |             |                        |                 |
|                   |  | <b>Mini Connector</b>   |             | <b>Micro Connector</b> |                 |
|                   |  | <b>Female</b>           | <b>Male</b> | <b>Female</b>          | <b>Male</b>     |
| <b>Color Code</b> |  |                         |             | 1 Drain                | 4 White (CAN_H) |
|                   |  |                         |             | 2 Red (V+)             | 5 Blue (CAN_L)  |
|                   |  |                         |             | 3 Black (V-)           |                 |

# Bulkhead Pass-thru, Round Media



*Mini Bulkhead Pass-thru*



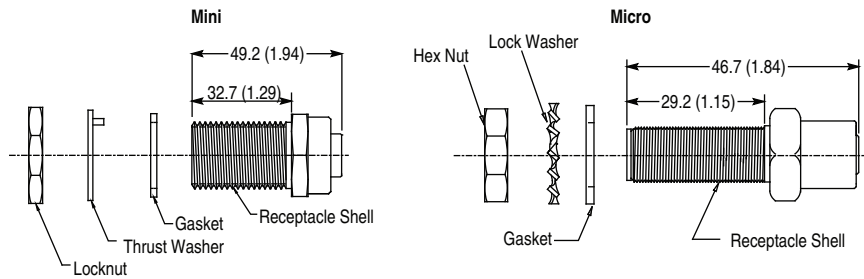
*Micro Bulkhead Pass-thru*

## Specifications

|                               | Mini                         | Micro                     |
|-------------------------------|------------------------------|---------------------------|
| <b>Mechanical</b>             |                              |                           |
| Material                      | Nickel-plated brass          |                           |
| Connector Insert Material     | PVC                          | Nylon                     |
| Gasket Material               | Neoprene                     |                           |
| Thrust Washer                 | Nylon                        | Steel alloy               |
| Contact Material              | Gold-plated palladium nickel |                           |
| <b>Electrical</b>             |                              |                           |
| Assembly Rating               | 600V, 8 A                    | 250V, 4 A                 |
| <b>Environmental</b>          |                              |                           |
| Enclosure Type Rating         | IP67                         |                           |
| Operating Temperature [C (F)] | -20...+105 ° (-4...+221 °)   | -20...+80 ° (-4...+176 °) |

## Approximate Dimensions

Dimensions are in millimeters (inches). Illustrations are not drawn to scale.







Mini Style Terminator



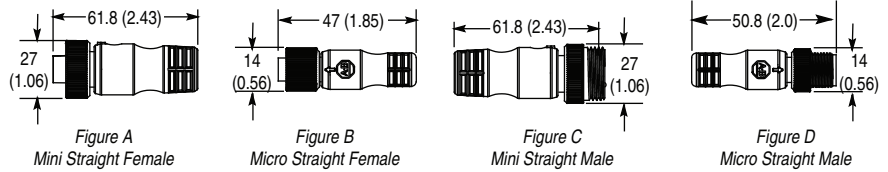
Micro Style Terminator

## Specifications

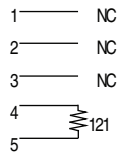
| Mechanical                    |   |
|-------------------------------|---|
| Coupling Nut Material         | Epoxy-coated zinc   |
| Contact Material              | Mini: Gold-plated brass; Micro: Gold over nickel-plated brass   |
| Electrical                    |   |
| Assembly Rating               | Mini: 250V, 8 A; Micro: 250V, 4 A                               |
| Environmental                 |   |
| Enclosure Type Rating         | NEMA 1, 2, 3, 4, 6P; 12, 13, IP67, 1200 psi (8720 kPa) washdown |
| Operating Temperature [C (F)] | -25...+70 ° (-13...+158 °)                                      |

## Approximate Dimensions

Dimensions are in millimeters (inches). Illustrations are not drawn to scale.



## Wiring Diagrams



# T-port, Round Media

## Mini



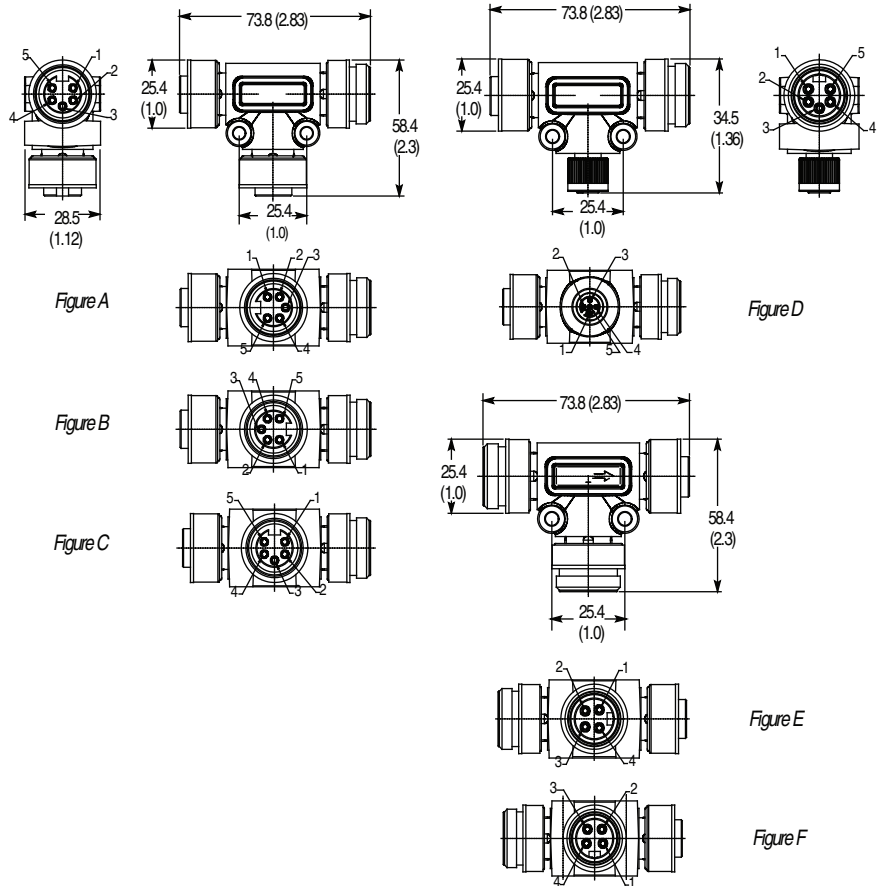
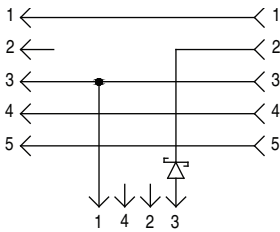
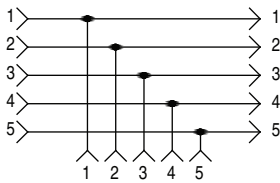
Mini Style T-Port

### Specifications

| Mechanical                    |  |
|-------------------------------|--|
| Coupling Nut Material         | Epoxy-coated zinc  |
| Material                      | TPE  |
| Contact Material              | Mini: Gold-plated brass; Micro: Gold-plated palladium nickel |
| Electrical                    |  |
| Assembly Rating               | Mini to Mini: 50V, 8 A; Mini to Micro: 50V, 4 A              |
| Environmental                 |  |
| Enclosure Type Rating         | NEMA 6P, 12 and 13; IP67, 1200 psi (8270 kPa) washdown       |
| Operating Temperature [C (F)] | -25...+70 ° (-13...+158 °)                                   |

### Approximate Dimensions

Dimensions are in millimeters (inches). Illustrations are not drawn to scale.



### Pinout and Color Code

|                   |  | Face View Pinout   |             |                        |                       |
|-------------------|--|--|-------------|------------------------|-----------------------|
|                   |  |  |             |                        |                       |
|                   |  | <b>Mini Connector</b>  |             | <b>Micro Connector</b> | <b>Mini Connector</b> |
|                   |  | <b>Female</b>  | <b>Male</b> | <b>Female</b>          | <b>Male</b>           |
| <b>Color Code</b> |  | 1 Drain      4 White (CAN_H)<br>2 Red (V+)    5 Blue (CAN_L)<br>3 Black (V-) |             |                        |                       |



Micro Style T-Port

Specifications

| Mechanical                    |   |
|-------------------------------|---|
| Coupling Nut Material         | Epoxy-coated zinc   |
| Material                      | PUR   |
| Contact Material              | Gold over nickel-plated brass                                     |
| Electrical                    |   |
| Assembly Rating               | 250V, 4 A   |
| Environmental                 |   |
| Enclosure Type Rating         | NEMA 6P, 12 and 13, IP 67 (IEC 529), 1200 psi (8270 kPa) washdown |
| Operating Temperature [C (F)] | -20...+70 ° (-4...+158 °)   |

Approximate Dimensions

Dimensions are in millimeters (inches). Illustrations are not drawn to scale.

Wiring Diagrams

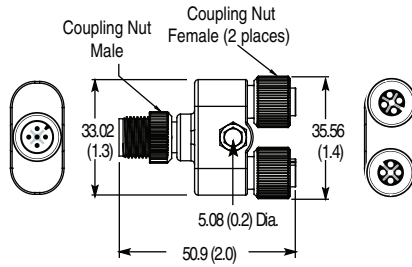
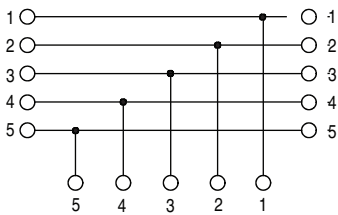


Figure A

Pinout and Color Code

| Face View Pinout |                 |
|------------------|-----------------|
|                  |                 |
| Micro Connector  |                 |
| Female           | Male            |
| 1 Drain          | 4 White (CAN_H) |
| 2 Red (V+)       | 5 Blue (CAN_L)  |
|                  | 3 Black (V-)    |

Color Code

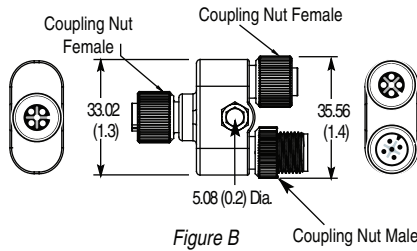


Figure B

# Gender and Configurator Changers, Round Media



Male to Male Gender Changer



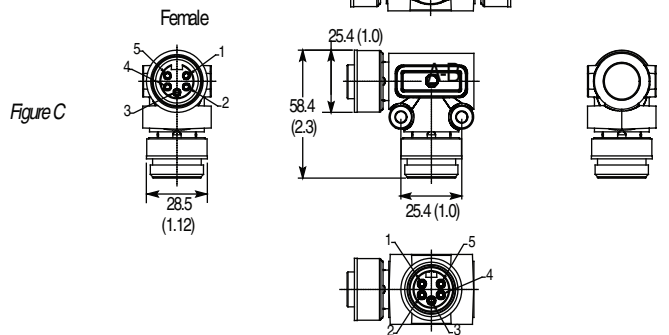
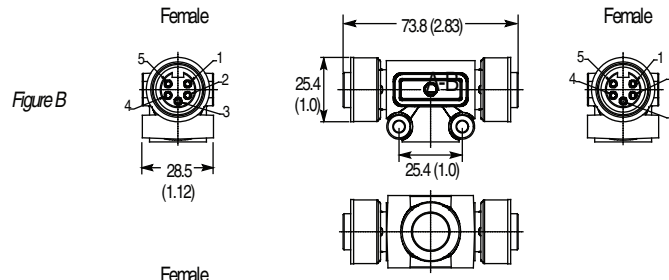
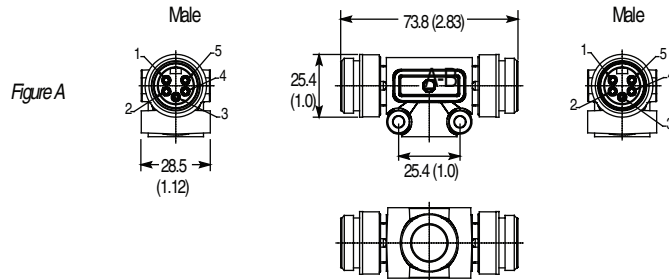
Right Angle Adaptor

## Specifications

| Mechanical                    |  |
|-------------------------------|--|
| Coupling Nut Material         | Epoxy-coated zinc                                      |
| Material                      | TPE  |
| Contact Material              | Gold-plated palladium nickel                           |
| Electrical                    |  |
| Assembly Rating               | 50V, 8 A   |
| Environmental                 |  |
| Enclosure Type Rating         | NEMA 6P, 12 and 13, IP67, 1200 psi (8270 kPa) washdown |
| Operating Temperature [C (F)] | -20...+70 ° (-4...+158 °)                              |

## Approximate Dimensions

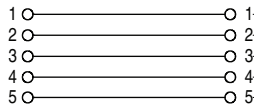
Dimensions are in millimeters (inches). Illustrations are not drawn to scale.



## Pinout and Color Code

| Face View Pinout                      |                                   |
|---------------------------------------|-----------------------------------|
|                                       |                                   |
| Mini Connector                        |                                   |
| Female                                | Male                              |
| 1 Drain<br>2 Red (V+)<br>3 Black (V-) | 4 White (CAN_H)<br>5 Blue (CAN_L) |

## Wiring Diagrams





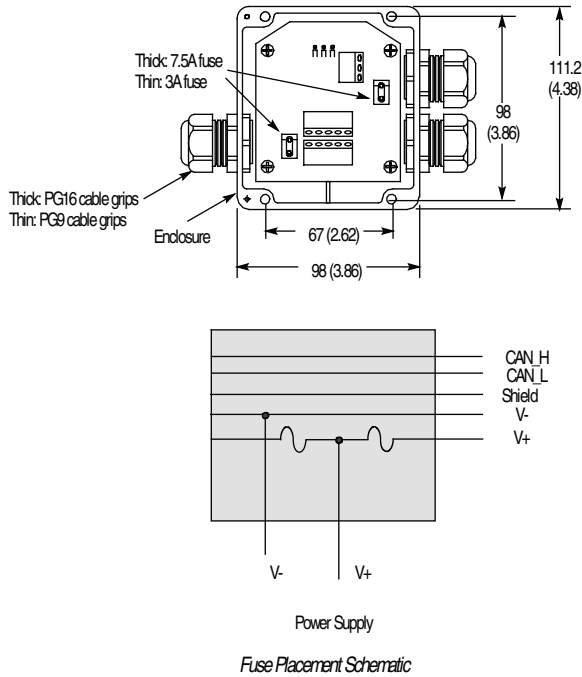
PowerTap, Thick Cable

Specifications

|                               |  |
|-------------------------------|--|
| Certifications                | UL Recognized and CSA Certified  |
| <b>Mechanical</b>             |  |
| Material                      | Black polymer  |
| Relative Humidity             | 5...95% (noncondensing)  |
| Current, Max                  | Thick: 15.0 A max. total current; (7.5 A max. per trunk)<br>Thin: 6 A max. total current; (3 A max. per trunk) |
| <b>Electrical</b>             |  |
| Assembly Rating               | Thick: 24V, 8 A; Thin: 25V, 3 A  |
| <b>Environmental</b>          |  |
| Enclosure Type Rating         | NEMA 3, 4X, 12 and 13; 1200 psi (8270 kPa) at 60°C (140°F); temperature washdown                               |
| Storage Temperature [C (F)]   | -40...+85 ° (-40...+185 °)   |
| Operating Temperature [C (F)] | -25...+70 ° (-13...+158 °)   |

Approximate Dimensions

Dimensions are in millimeters (inches). Illustrations are not drawn to scale.



# DeviceBox™, Round Media

## 2-, 4-, 8-Port



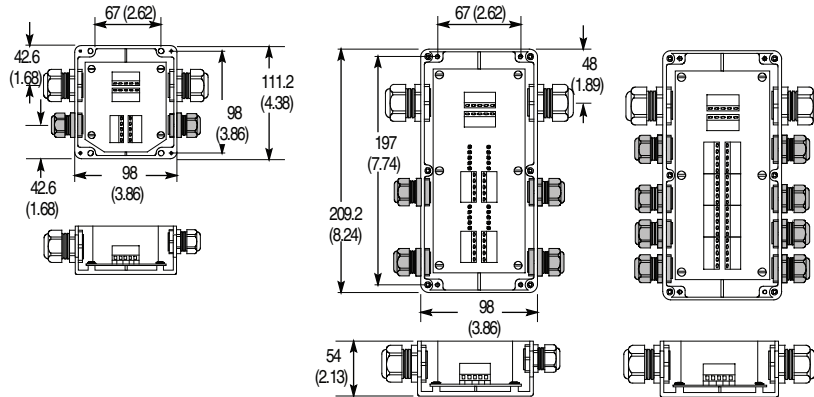
4-port DeviceBox, Thick Cable

### Specifications

|                               |  |
|-------------------------------|--|
| Certifications                | UL Recognized and CSA Certified                                |
| <b>Mechanical</b>             |  |
| Material                      | Black polymer  |
| Relative Humidity             | 5...95% (noncondensing)  |
| Current, Max                  | Thick: 8 A max. total current; (7.5 A max. per trunk)<br>Thin: |
| <b>Electrical</b>             |  |
| Assembly Rating               | 24V, 8 A   |
| <b>Environmental</b>          |  |
| Enclosure Type Rating         | NEMA 3, 4X, 12 and 13; 1200 psi (8270 kPa) washdown            |
| Storage Temperature [C (F)]   | -40...+85 ° (-40...+185 °)                                     |
| Operating Temperature [C (F)] | -25...+70 ° (-13...+158 °)                                     |

### Approximate Dimensions

Dimensions are in millimeters (inches). Illustrations are not drawn to scale.



**Note:** Trunk connection in diagrams above show thick cable gland.



6-Port Thru-Trunk DevicePort with Micro Connectors

### Specifications

|                               |   |
|-------------------------------|---|
| Certifications                | UL Recognized and CSA Certified                               |
| <b>Mechanical</b>             |   |
| Material                      | Chemical resistant black polymer                              |
| Connector Shell Material      | Anodized aluminum with clear sealant                          |
| Contact Material              | Mini: Gold-plated brass; Micro: Gold over nickel-plated brass |
| Shock                         | 5 g   |
| Vibration                     | 30...120 Hz   |
| <b>Electrical</b>             |   |
| Assembly Rating               | 24V, 3 A  |
| <b>Environmental</b>          |   |
| Enclosure Type Rating         | IP67, NEMA 4, 6P; 1200 psi (8270 kPa) washdown                |
| Operating Temperature [C (F)] | -13...+158 ° (-25...+70 °)                                    |

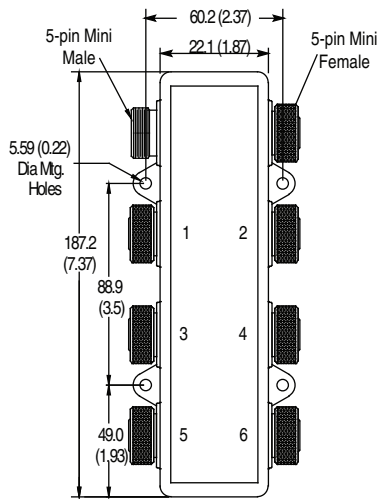
### Pinout and Color Code

| Face View Pinout      |                 |                        |
|-----------------------|-----------------|------------------------|
|                       |                 |                        |
| <b>Mini Connector</b> |                 | <b>Micro Connector</b> |
| <b>Female</b>         | <b>Male</b>     | <b>Female</b>          |
| 1 Drain               | 4 White (CAN_H) |                        |
| 2 Red (V+)            | 5 Blue (CAN_L)  |                        |
| 3 Black (V-)          |                 |                        |

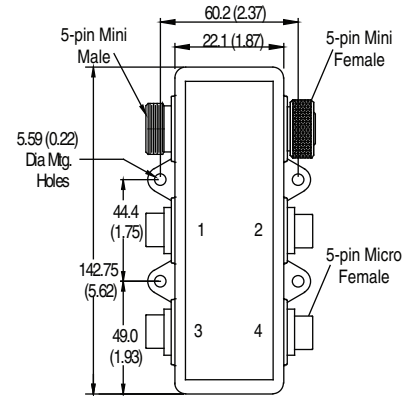
**Color Code**

### Approximate Dimensions

Dimensions are in millimeters (inches). Illustrations are not drawn to scale.



6-port mini thru-trunk  
DevicePort



4-port micro thru-trunk  
DevicePort

# DevicePort™, Round Media Drop-Connected



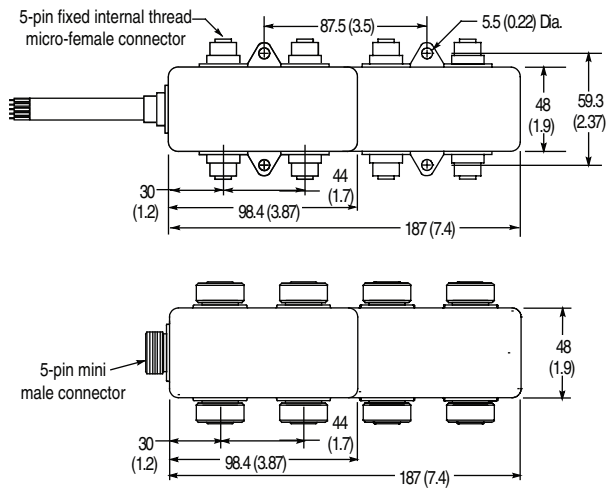
8-Port DevicePort with Cable Drop and Micro Connectors

## Specifications

|                               |   |
|-------------------------------|---|
| Certifications                | UL Recognized and CSA Certified                               |
| <b>Mechanical</b>             |   |
| Material                      | Chemical resistant black polymer                              |
| Connector Shell Material      | Anodized aluminum with clear sealant                          |
| Contact Material              | Mini: Gold-plated brass; Micro: Gold over nickel-plated brass |
| Shock                         | 5 g   |
| Vibration                     | 30...120 Hz   |
| <b>Electrical</b>             |   |
| Assembly Rating               | 24V, 3 A  |
| <b>Environmental</b>          |   |
| Enclosure Type Rating         | IP67, NEMA 4, 6P; 1200 psi (8270 kPa) washdown                |
| Operating Temperature [C (F)] | -13...+158 ° (-25...+70 °)                                    |

## Approximate Dimensions

Dimensions are in millimeters (inches). Illustrations are not drawn to scale.



## Pinout and Color Code

|                   |  | Face View Pinout   |             |                        |             |
|-------------------|--|--|-------------|------------------------|-------------|
|                   |  |  |             |                        |             |
|                   |  | <b>Mini Connector</b>  |             | <b>Micro Connector</b> |             |
|                   |  | <b>Female</b>  | <b>Male</b> | <b>Female</b>          | <b>Male</b> |
| <b>Color Code</b> |  | 1 Drain      4 White (CAN_H)<br>2 Red (V+)    5 Blue (CAN_L)<br>3 Black (V-) |             |                        |             |



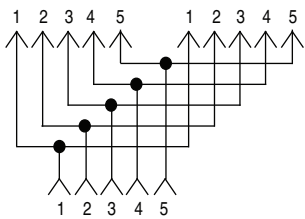


**Open-Style Y-Adaptor**

### Specifications

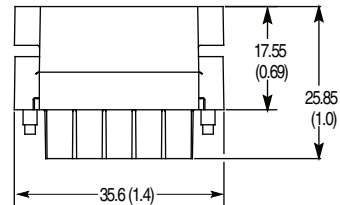
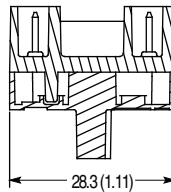
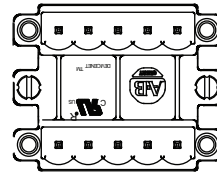
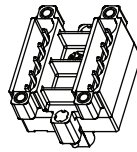
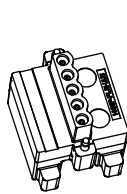
|                               |                                 |
|-------------------------------|---------------------------------|
| Certifications                | UL Recognized for US and Canada |
| <b>Mechanical</b>             |                                 |
| Material                      | Nylon                           |
| Screw Material                | Nickel-plated brass             |
| Contact Material              | Phosphor-bronze                 |
| <b>Electrical</b>             |                                 |
| Cable Rating                  | —                               |
| Assembly Rating               | 24V, 8 A                        |
| <b>Environmental</b>          |                                 |
| Enclosure Type Rating         | IP20                            |
| Operating Temperature [C (F)] | -25...+75° (-13...+167°)        |

### Wiring Diagrams



### Approximate Dimensions

Dimensions are in millimeters (inches). Illustrations are not drawn to scale.



# Cordsets, Round Media

## Open-Style

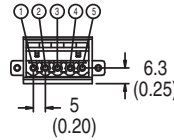


### Specifications

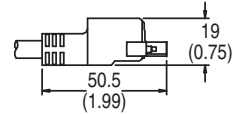
| Safety Ratings                |  |
|-------------------------------|--|
| Certifications                | UL Recognized and CSA Certified  |
| Physical Characteristics      |  |
| Housing Material              | Nickel-plated brass  |
| Jacket Material               | Thin Grey PVC  |
| Conductor Size, Max.          | 2 PR 22 AWG, 2 PR 24 AWG   |
| Contact Material              | Gold over nickel-plated brass  |
| Cable Diameter                | 6.9 (0.27)   |
| Home Run Connection           | 10 x diameter  |
| Current, Max                  | 4 A  |
| Electrical                    |  |
| Cable Rating                  | UL-CM 75 °C (167 °F) or AWM 2464, CSA-SWM II A/B 80 °C (176 °F) 300V FT4 |
| Assembly Rating               | 250V, 4 A  |
| Environmental                 |  |
| Enclosure Type Rating         | IP67, 1200 psi (8720 kPa) washdown                                       |
| Operating Temperature [C (F)] | -20...+70 ° (-15...+158 °)   |

### Approximate Dimensions

Dimensions are in millimeters (inches). Illustrations are not drawn to scale.



Drawing 1



Drawing 2

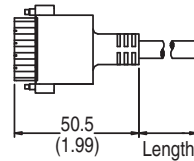


Figure A

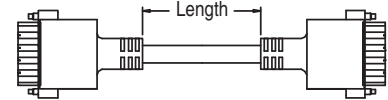


Figure B

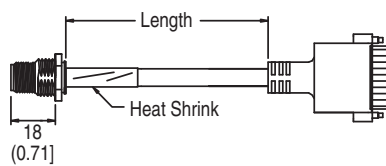


Figure C

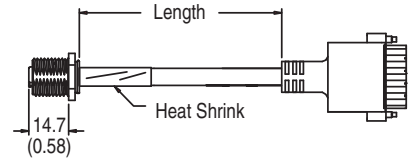
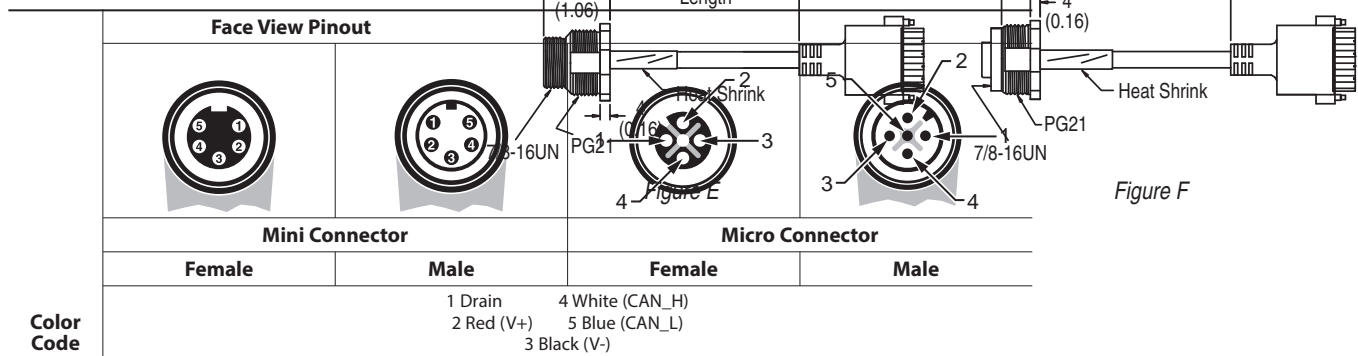


Figure D

### Pinout and Color Code

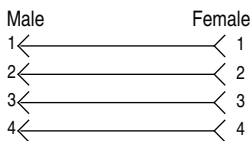




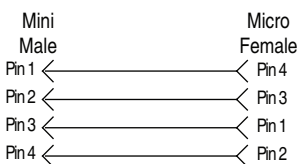
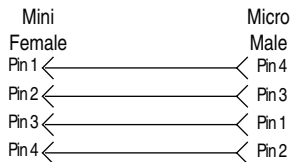
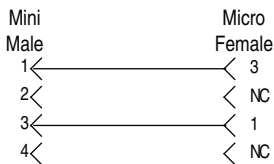
**Mini to Mini Auxiliary Power Patchcord**

### Wiring Diagrams

#### Mini to Mini and Micro to Micro Patchcords



#### Mini to Micro Patchcords

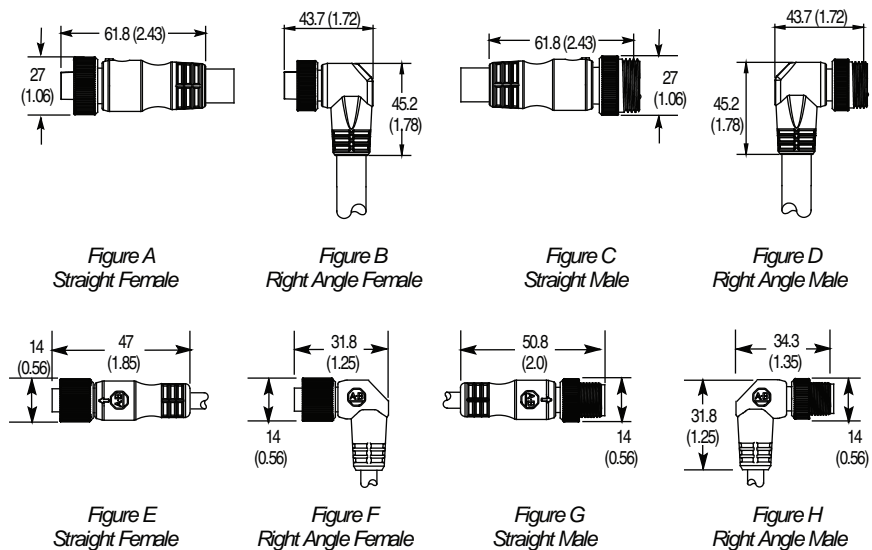


### Specifications

|                            |   |
|----------------------------|---|
| Certifications             | UL Recognized and CSA Certified   |
| <b>Mechanical</b>          |   |
| Coupling Nut Material      | Epoxy-coated zinc   |
| Connector Material         | Molded oil-resistant PUR (Micro), TPE (Mini)  |
| Contact Material           | Gold over nickel-plated brass   |
| Cable Type                 | Oil-resistant yellow PVC jacket, UL Recognized and CSA Certified, 16 AWG cable: 600V, 18 AWG and 22 AWG cable: 300V   |
| Bend Radius                | 10 x diameter   |
| Cable Diameter [mm (in.)]  | 16 AWG: 11 (0.42), 18 AWG: 7.4 (0.29), 22 AWG: 5 (0.21)   |
| <b>Electrical</b>          |   |
| Cable Rating               | 16 AWG: UL STOOW VW-1 105C 600V, CSA ST 105C 600V FT2, UV oil and water resistant;<br>18 AWG, 22 AWG: UL AWM style 2661 VW-1 105C 300V, CSA AWM A/B I/II 80C 300V FT1, UV oil and water resistant |
| Assembly Rating            | Mini 16 AWG: 600V 10 A; Mini or micro 18 AWG or 22 AWG: 250V, 4 A   |
| <b>Environmental</b>       |   |
| Enclosure Type Rating      | IP67; NEMA 6P 1200 psi (8720 kPa) washdown  |
| Temperature Rating [C (F)] | -20...+105 ° (-4...+221 °)  |

### Approximate Dimensions

Dimensions are in millimeters (inches). Illustrations are not drawn to scale.



### Pinout and Color Code

| Color Code   | Face View Pinout   |                    |                              |                       |
|--------------|--------------------|--------------------|------------------------------|-----------------------|
|              | Mini Connector     |                    | Micro Connector              |                       |
|              | Female             | Male               | Female                       | Male                  |
| 16 AWG Cable | 1 Black<br>2 White | 3 Red<br>4 Green   | —                            |                       |
| 18 AWG Cable | 1 Black<br>2 Blue  | 3 Brown<br>4 White | 1 Brown<br>2 White<br>3 Blue | 4 Black<br>5 Not used |

**Note:** Pinout diagram for end device connector may differ, see page 6-55.

# Cordsets & Patchcords, Auxiliary Power

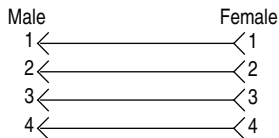
## Flex-rated



Mini to Mini Auxiliary Power Patchcord

### Wiring Diagrams

#### Mini to Mini and Micro to Micro Patchcord

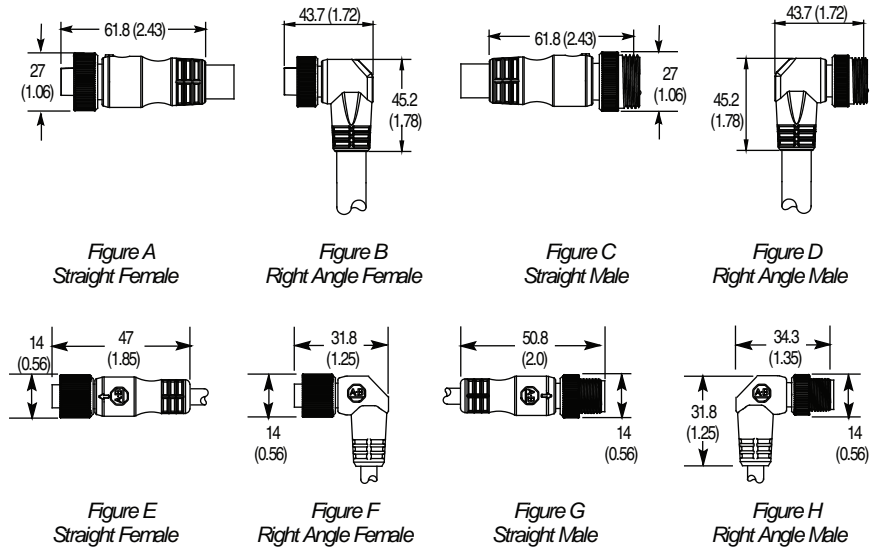


### Specifications

|                            |   |
|----------------------------|---|
| Certifications             | UL Recognized and CSA Certified   |
| <b>Mechanical</b>          |   |
| Coupling Nut Material      | Epoxy-coated zinc   |
| Connector Material         | Molded oil-resistant PUR (Micro), TPE (Mini)  |
| Contact Material           | Gold over nickel-plated brass   |
| Cable Type                 | Oil-resistant yellow PVC jacket, UL Recognized and CSA Certified, 16 AWG cable: 600V, 18 AWG and 22 AWG cable: 300V   |
| Bend Radius                | 10 x diameter   |
| Cable Diameter [mm (in.)]  | 16 AWG: 11 (0.42), 18 AWG: 7.4 (0.29), 22 AWG: 5 (0.21)   |
| <b>Electrical</b>          |   |
| Cable Rating               | 16 AWG: UL STOOW VW-1 105C 600V, CSA ST 105C 600V FT2, UV oil and water resistant;<br>18 AWG, 22 AWG: UL AWM style 2661 VW-1 105C 300V, CSA AWM A/B I/II 80C 300V FT1, UV oil and water resistant |
| Assembly Rating            | Mini 16 AWG: 600V 10 A; Mini or micro 18 AWG or 22 AWG: 250V, 4 A   |
| <b>Environmental</b>       |   |
| Enclosure Type Rating      | IP67; NEMA 6P 1200 psi (8720 kPa) washdown  |
| Temperature Rating [C (F)] | -20...+105 ° (-4...+221 °)  |

### Approximate Dimensions

Dimensions are in millimeters (inches). Illustrations are not drawn to scale.



### Pinout and Color Code

| Color Code   | Face View Pinout   |                    |                              |                       |
|--------------|--------------------|--------------------|------------------------------|-----------------------|
|              | Mini Connector     |                    | Micro Connector              |                       |
|              | Male               | Female             | Male                         | Female                |
| 16 AWG Cable | 1 Black<br>2 White | 3 Red<br>4 Green   | —                            |                       |
| 18 AWG Cable | 1 Black<br>2 Blue  | 3 Brown<br>4 White | 1 Brown<br>2 White<br>3 Blue | 4 Black<br>5 Not used |

Note: Pinout diagram for end device connector may differ, see page 6-54.



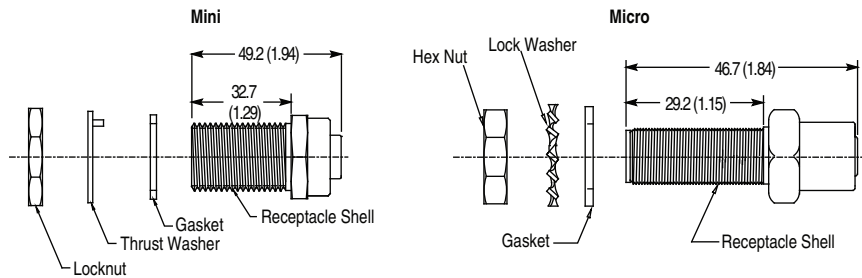
**Power Bulkhead Pass-thru**

## Specifications

|                               | Mini  | Micro       |
|-------------------------------|---|-------------|
| <b>Mechanical</b>             |   |             |
| Shell and Lockout Material    | Nickel-plated brass                         |             |
| Connector Insert Material     | PVC   | Nylon       |
| Gasket Material               | Neoprene                                    |             |
| Thrust Washer                 | Nylon                                       | Steel Alloy |
| Contact Material              | Gold-plated palladium/nickel                |             |
| <b>Electrical</b>             |   |             |
| Assembly Rating               | 600V, 8 A                                   | 250V, 4 A   |
| <b>Environmental</b>          |   |             |
| Enclosure Type Rating         | NEMA 4, 6P, 12, 13; IP67; 1200 psi washdown |             |
| Operating Temperature [C (F)] | -20...+105 ° (-4...+221 °)                  |             |

## Approximate Dimensions

Dimensions are in millimeters (inches). Illustrations are not drawn to scale.



## Receptacles, Auxiliary Power



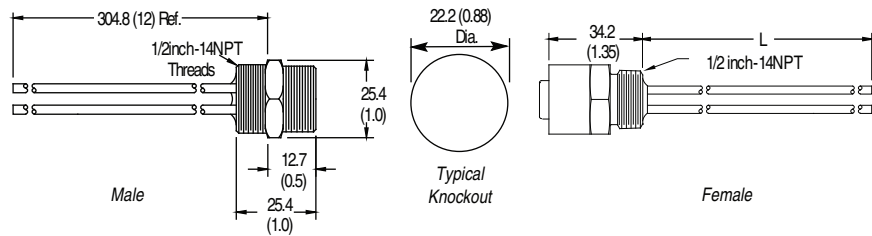
4-pin Female Receptacles

### Specifications

| Mechanical                |  |
|---------------------------|--|
| Receptacle Shell Material | Female: Aluminum with clear sealant<br>Male: Die-cast zinc with clear sealant    |
| Connector Insert Material | PVC  |
| Contact Material          | Gold over nickel-plated brass  |
| Cable Type                | Oil resistant PVC, 16 AWG stranded copper, 600V, UL Recognized and CSA Certified |
| Electrical                |  |
| Cable Rating              | 600V   |
| Assembly Rating           | 600V, 10 A   |
| Environmental             |  |
| Enclosure Type Rating     | NEMA 6P; IP67; 1200 psi (8720 kPa) washdown                                      |
| Cable Type                | -30...+105 ° (-22...+221 °)  |

### Approximate Dimensions

Dimensions are in millimeters (inches). Illustrations are not drawn to scale.



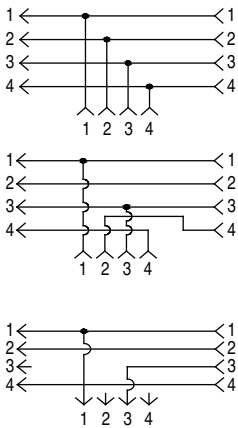


4-Pin Mini Style Power Trunk Tee

## Specifications

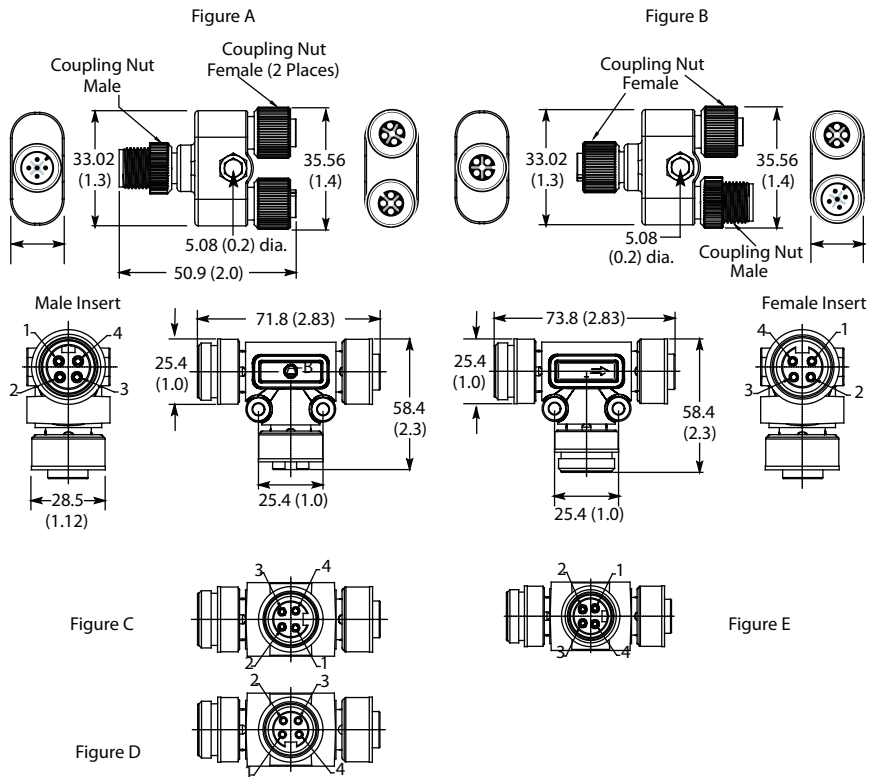
| Mechanical                    |  |
|-------------------------------|--|
| Coupling Nut Material         | Epoxy-coated zinc  |
| Connector Material            | PUR  |
| Contact Material              | Gold over nickel-plated brass                                    |
| Electrical                    |  |
| Assembly Rating               | 250V, 4 A  |
| Environmental                 |  |
| Enclosure Type Rating         | NEMA 6P, 12 and 13, IP67 (IEC 529), 1200 psi (8270 kPa) washdown |
| Operating Temperature [C (F)] | -20...+70 ° (-4...+158 °)  |

## Wiring Diagrams



## Approximate Dimensions

Dimensions are in millimeters (inches). Illustrations are not drawn to scale.



## Pinout and Color Code

| Color Code | Face View Pinout |  |                 |  |
|------------|------------------|--|-----------------|--|
|            | Mini Connector   |  | Micro Connector |  |
| Female     |                  |  |                 |  |
| Male       |                  |  |                 |  |

# Safety Shorting Plugs, Auxiliary Power

## Single-Channel



Male Shorting Plug

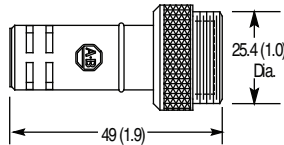
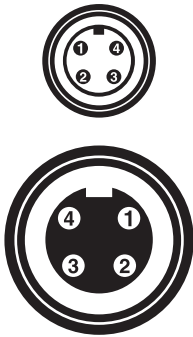
### Specifications

| Mechanical                    |  |
|-------------------------------|--|
| Coupling Nut Material         | Epoxy-coated zinc  |
| Material                      | Red Santoprene   |
| Contact Material              | Gold over nickel-plated brass                                    |
| Electrical                    |  |
| Assembly Rating               | 600V, 10 A   |
| Environmental                 |  |
| Enclosure Type Rating         | NEMA 1, 2, 3, 4, 6P, 12, 13, IP 67, 1200 psi (8720 kPa) washdown |
| Operating Temperature [C (F)] | -25...+70 ° (-13...+158 °)                                       |

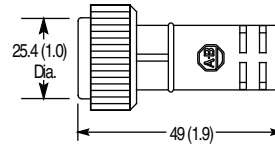
### Approximate Dimensions

Dimensions are in millimeters (inches). Illustrations are not drawn to scale.

### Pinout

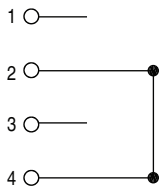


Male Mini Style Shorting Plug



Female Mini Style Shorting Plug

### Wiring Diagrams



Rockwell Automation maintains current product environmental information on its website at <http://www.rockwellautomation.com/rockwellautomation/about-us/sustainability-ethics/product-environmental-compliance.page>

Allen-Bradley and Rockwell Automation are trademarks of Rockwell Automation, Inc. Trademarks not belonging to Rockwell Automation are property of their respective companies.

[www.rockwellautomation.com](http://www.rockwellautomation.com)

#### Power, Control and Information Solutions Headquarters

Americas: Rockwell Automation, 1201 South Second Street, Milwaukee, WI 53204-2496 USA, Tel: (1) 414.382.2000, Fax: (1) 414.382.4444  
 Europe/Middle East/Africa: Rockwell Automation NV, Pegasus Park, De Kleetlaan 12a, 1831 Diegem, Belgium, Tel: (32) 2 663 0600, Fax: (32) 2 663 0640  
 Asia Pacific: Rockwell Automation, Level 14, Core F, Cyberport 3, 100 Cyberport Road, Hong Kong, Tel: (852) 2887 4788, Fax: (852) 2508 1846