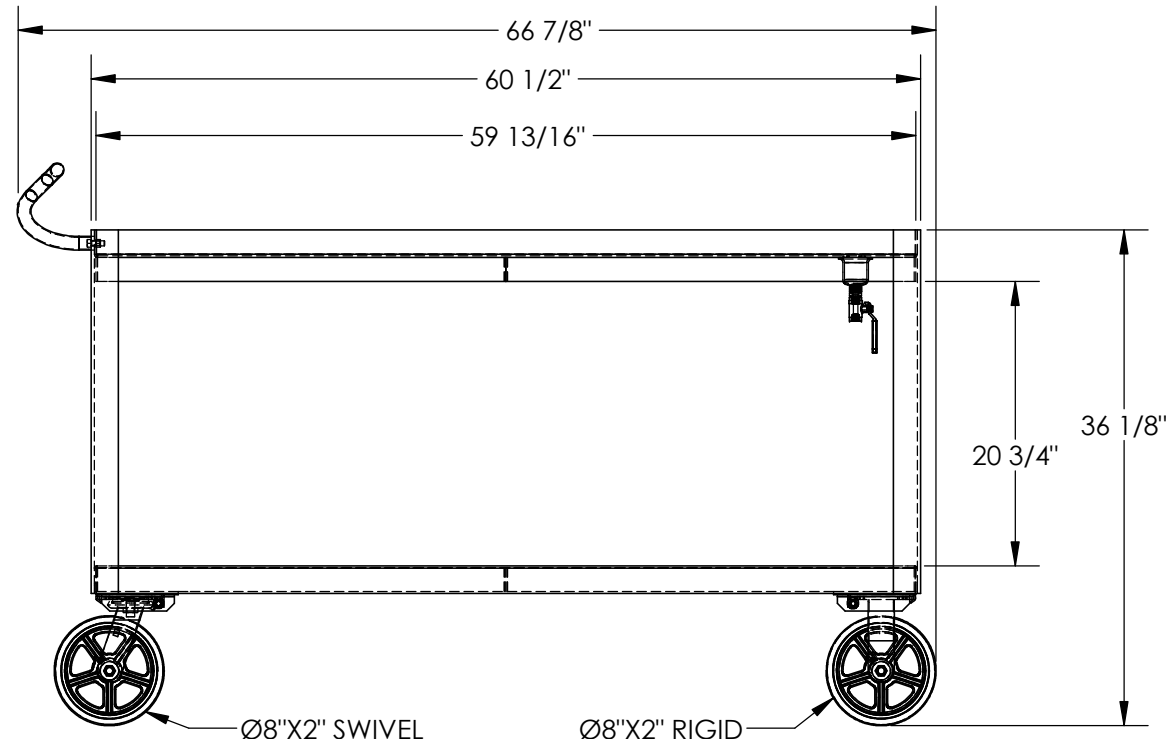
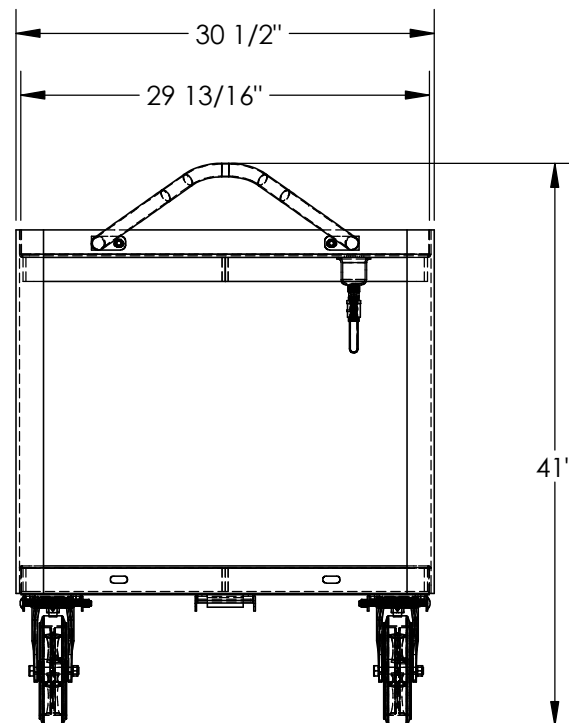


# ERGO DRAIN CART - DH-MR2-3060-D

APPROX WEIGHT: 282.07 lbs.  
DOES NOT INCLUDE WEIGHT OF POWER OR PACKAGING!!!

\*\*\* ANY ADDITIONS, DELETIONS, OR OMISSIONS MUST BE CORRECTED ON THIS DRAWING AS THIS DRAWING WILL BE CONSIDERED ALL INCLUSIVE \*\*\*

ALL GRAPHICS PROVIDED ARE FOR REFERENCE ONLY. IF CERTAIN DIMENSIONS ARE CRITICAL PLEASE VERIFY THOSE DIMENSIONS WITH YOUR SALESPERSON



## STANDARD FEATURES

MODEL NUMBER IS DH-MR2-3060-D  
MAXIMUM CART CAPACITY IS 2,400 LBS.  
MAXIMUM SHELF CAPACITY IS 2,000 LBS.  
NOT TO EXCEED MAXIMUM CAPACITY OF THE CART  
OVERALL WIDTH IS : 30 1/2"  
USABLE WIDTH IS : 29 13/16"  
OVERALL LENGTH IS : 66 7/8"  
USABLE LENGTH IS : 59 13/16"  
OVERALL HEIGHT IS : 41"  
SHELF CLEARANCE : 20 3/4"  
2 RIGID 8" X 2" MOLDED-ON-RUBBER CASTERS  
2 SWIVEL 8" X 2" MOLDED-ON-RUBBER CASTERS  
STEEL CONSTRUCTION

## STANDARD FEATURES

NONE

DIMENSION TOLERANCE  $\pm 1/4"$

APPROVAL

I, THE UNDERSIGNED, AGREE THAT THE PRODUCT AS REPRESENTED SATISFIES DESIGN AND DIMENSION REQUIREMENTS. I ALSO ACKNOWLEDGE MY DUTY TO CONFIRM PRODUCT AND INSTALLATION COMPLIANCE WITH ALL APPLICABLE FEDERAL, STATE AND LOCAL REGULATIONS AND STANDARDS.

**ANY MODIFIED UNITS ARE NON-RETURNABLE**

[ ] As drawn [ ] As marked

Signed: \_\_\_\_\_ Date: \_\_\_\_\_

Printed Name: \_\_\_\_\_

LEAD TIME WILL START UPON RECEIPT OF SIGNED APPROVAL DRAWING

FOR INTERNAL USE ONLY  
PROJECT SIGN OFF

SALES	
ENG.	
FAB.	
POWER	

DISTRIBUTOR'S NAME:

VESTIL MANUFACTURING

DRAWN BY: DLS

DATE: 08/03/2012

REFERENCE: X

SCALE: 1:14

QUOTED LEAD TIME: X

QUOTE # X

P.O.# X

W.O.# X

SALES: X

FILE NAME:

16-007-341