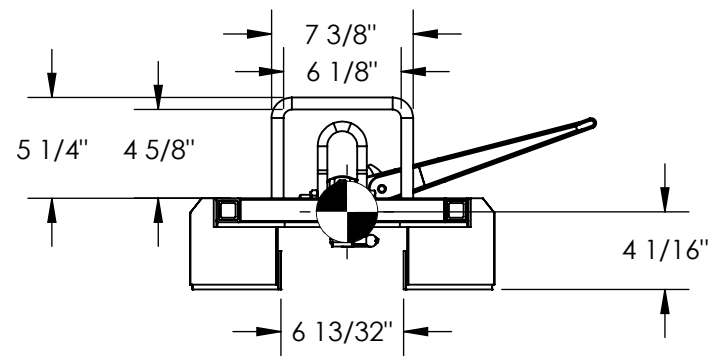
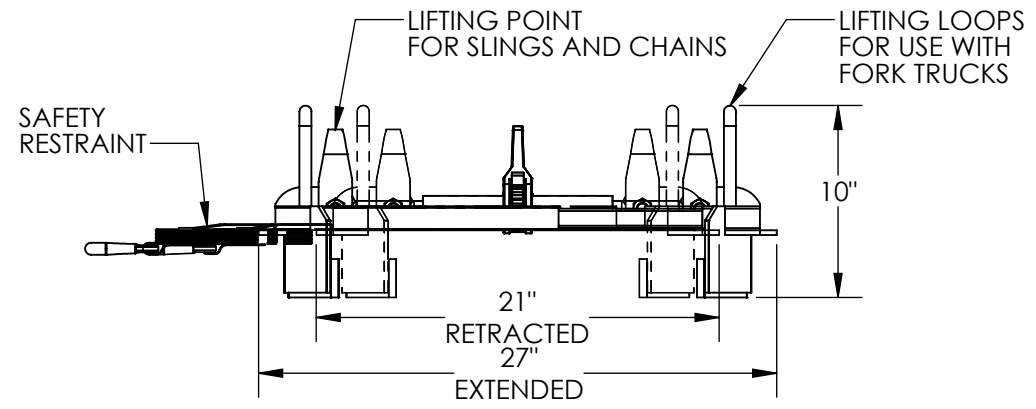
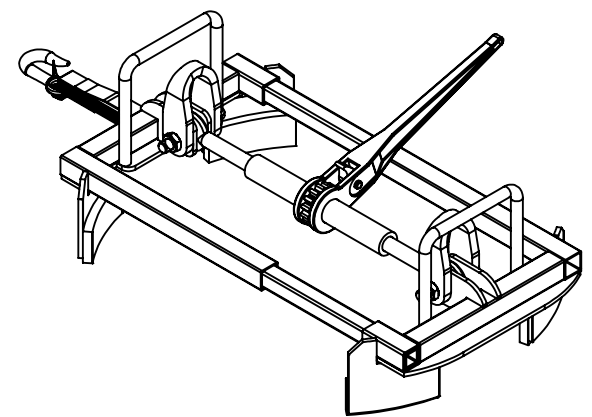
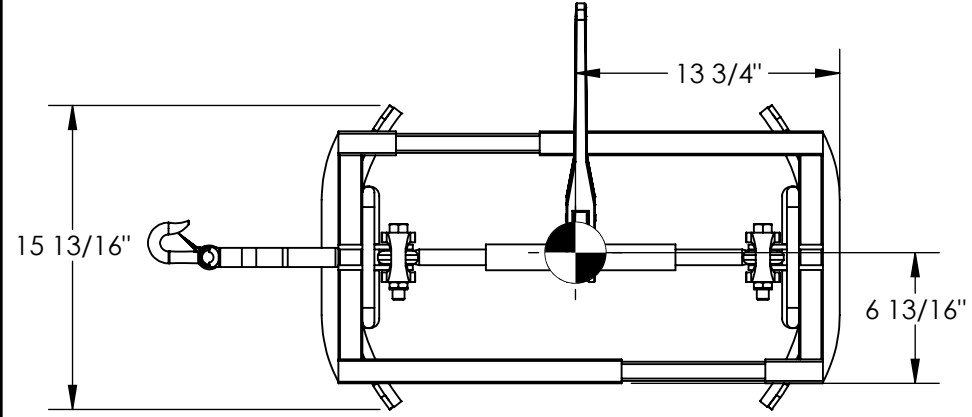


HEAVY DUTY DRUM LIFTER - HDDL-55

APPROX WEIGHT: 44.56 lbs.
 DOES NOT INCLUDE WEIGHT OF POWER OR PACKAGING!!!

*** ANY ADDITIONS, DELETIONS, OR OMISSIONS MUST BE CORRECTED ON THIS DRAWING AS THIS DRAWING WILL BE CONSIDERED ALL INCLUSIVE ***
 ALL GRAPHICS PROVIDED ARE FOR REFERENCE ONLY. IF CERTAIN DIMENSIONS ARE CRITICAL PLEASE VERIFY THOSE DIMENSIONS WITH YOUR SALESPERSON



STANDARD FEATURES

- MODEL NUMBER IS HDDL-55
- OVERALL WIDTH IS 15 13/16"
- EXTENDED LENGTH IS 27"
- RETRACED LENGTH IS 21"
- OVERALL HEIGHT IS 10"
- MAX CAPACITY IS 1500 LBS.
- DESIGNED FOR LIFTING 55 GAL. CLOSED-HEAD DRUMS IN THE VERTICAL POSITION
- INTEGRAL LOOPS INCLUDED FOR USE WITH FORK TRUCK FORKS/TINES
- USABLE FORK POCKET HEIGHT IS 4 5/8"
- USABLE FORK POCKET WIDTH IS 6 1/8"
- INCLUDES LIFTING POINTS FOR ATTACHING SLINGS OR CHAINS
- INCLUDES SAFETY RESTRAINT
- TOUGH BAKED IN POWDER COATED BLUE FINISH

APPROX. WEIGHT/ LOST LOAD= 45 LBS. (APPROX)
 MINIMUM EFFECTIVE THICKNESS= ADJUSTABLE
 NEVER EXCEED LOAD CENTER RATING PER FORK TRUCK MANUFACTURER'S GUIDELINES.
 DO NOT USE THIS FORK TRUCK ATTACHMENT IF LOAD WILL EXCEED FORK TRUCK MANUFACTURER'S LOAD CENTER RATING.

DIMENSION TOLERANCE ± 1/4"

A P P R O V A L	I, THE UNDERSIGNED, AGREE THAT THE PRODUCT AS REPRESENTED SATISFIES DESIGN AND DIMENSION REQUIREMENTS. I ALSO ACKNOWLEDGE MY DUTY TO CONFIRM PRODUCT AND INSTALLATION COMPLIANCE WITH ALL APPLICABLE FEDERAL, STATE AND LOCAL REGULATIONS AND STANDARDS.	
	UNITS REQUIRING APPROVAL DRAWINGS OR MODIFIED ARE NON-RETURNABLE	
	[] As drawn [] As marked	
	Signed: _____ Date: _____	
Printed Name: _____		
LEAD TIME WILL START UPON RECEIPT OF SIGNED APPROVAL DRAWING		

SPECIAL FEATURES

NONE

DISTRIBUTOR'S NAME: VESTIL MANUFACTURING		P.O.# X
DRAWN BY: TJM		W.O.# X
DATE: 06/10/11		SALES: X
REFERENCE: X		SCALE: 1:10
QUOTED LEAD TIME: X		FILE NAME: 09-007-143
QUOTE # X		