

FOLDING MEZZANINE LADDER, LAD-FM-120

APPROX WEIGHT: 382.56 lbs.
DOES NOT INCLUDE WEIGHT OF POWER OR PACKAGING!!!

*** ANY ADDITIONS, DELETIONS, OR OMISSIONS MUST BE CORRECTED ON THIS DRAWING AS THIS DRAWING WILL BE CONSIDERED ALL INCLUSIVE ***

ALL GRAPHICS PROVIDED ARE FOR REFERENCE ONLY. IF CERTAIN DIMENSIONS ARE CRITICAL PLEASE VERIFY THOSE DIMENSIONS WITH YOUR SALESPERSON

STANDARD FEATURES

MODEL NUMBER: LAD-FM-120
 OVERALL WIDTH: 32 1/4"
 USABLE STEP WIDTH: 24 1/4"
 HANDRAIL HEIGHT: 31 5/8"
 STEP MATERIAL: SERRATED STEEL
 STEP DEPTH: 7"
 MAX CAPACITY: 350 LBS.
 MEZZANINE HEIGHT: 120"
 (MEZZANINE HEIGHT TOLERANCE: ±1/2")
 STEP HEIGHT SPACING: 9 1/4"
 EXTENDED LENGTH: 80"
 COLLAPSED LENGTH: 15 1/2" (APPROX.)
 TOUGH BAKED IN POWDER COATED
 BLUE AND YELLOW FINISH

SPECIAL FEATURES

NONE

IT IS THE CUSTOMER'S RESPONSIBILITY TO MAKE SURE THAT THIS UNIT COMPLIES WITH ALL LOCAL SAFETY LAWS, CODES AND REGULATIONS

DIMENSION TOLERANCE ± 1/4"

APPROVAL

I, THE UNDERSIGNED, AGREE THAT THE PRODUCT AS REPRESENTED SATISFIES DESIGN AND DIMENSION REQUIREMENTS. I ALSO ACKNOWLEDGE MY DUTY TO CONFIRM PRODUCT AND INSTALLATION COMPLIANCE WITH ALL APPLICABLE FEDERAL, STATE AND LOCAL REGULATIONS AND STANDARDS.

UNITS REQUIRING APPROVAL DRAWINGS OR MODIFIED ARE NON-RETURNABLE

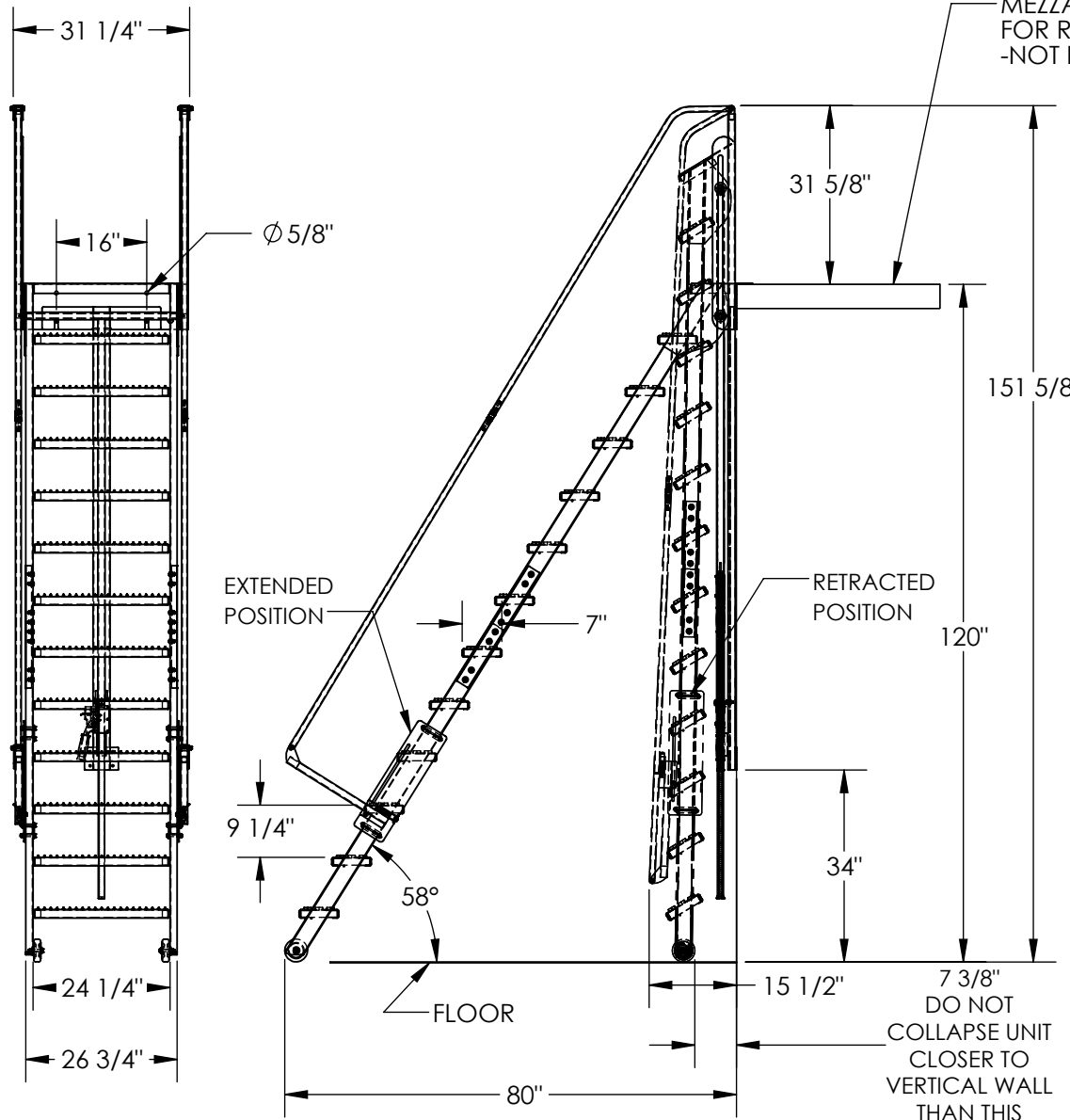
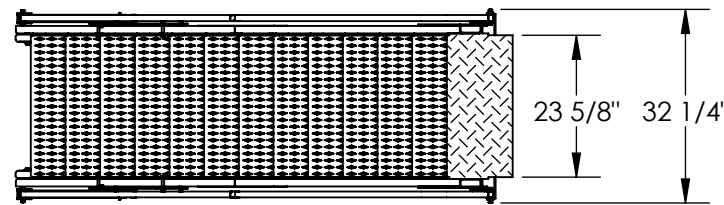
[] As drawn [] As marked

Signed: _____ Date: _____

Printed Name: _____

LEAD TIME WILL START UPON RECEIPT OF SIGNED APPROVAL DRAWING

DISTRIBUTOR'S NAME:		P.O.#
VESTIL MANUFACTURING		X
DRAWN BY: TAW		W.O.#
DATE: 6/14/2016		X
REFERENCE: X	SCALE: 1:32	SALES: X
QUOTED LEAD TIME: X	QUOTE #	FILE NAME:
	X	44-007-595



DO NOT COLLAPSE UNIT CLOSER TO VERTICAL WALL THAN THIS