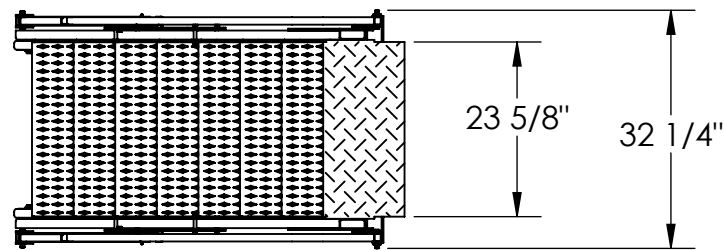


# FOLDING MEZZANINE LADDER, LAD-FM-72

APPROX WEIGHT: 275.63 lbs.  
 DOES NOT INCLUDE WEIGHT OF POWER OR PACKAGING!!!

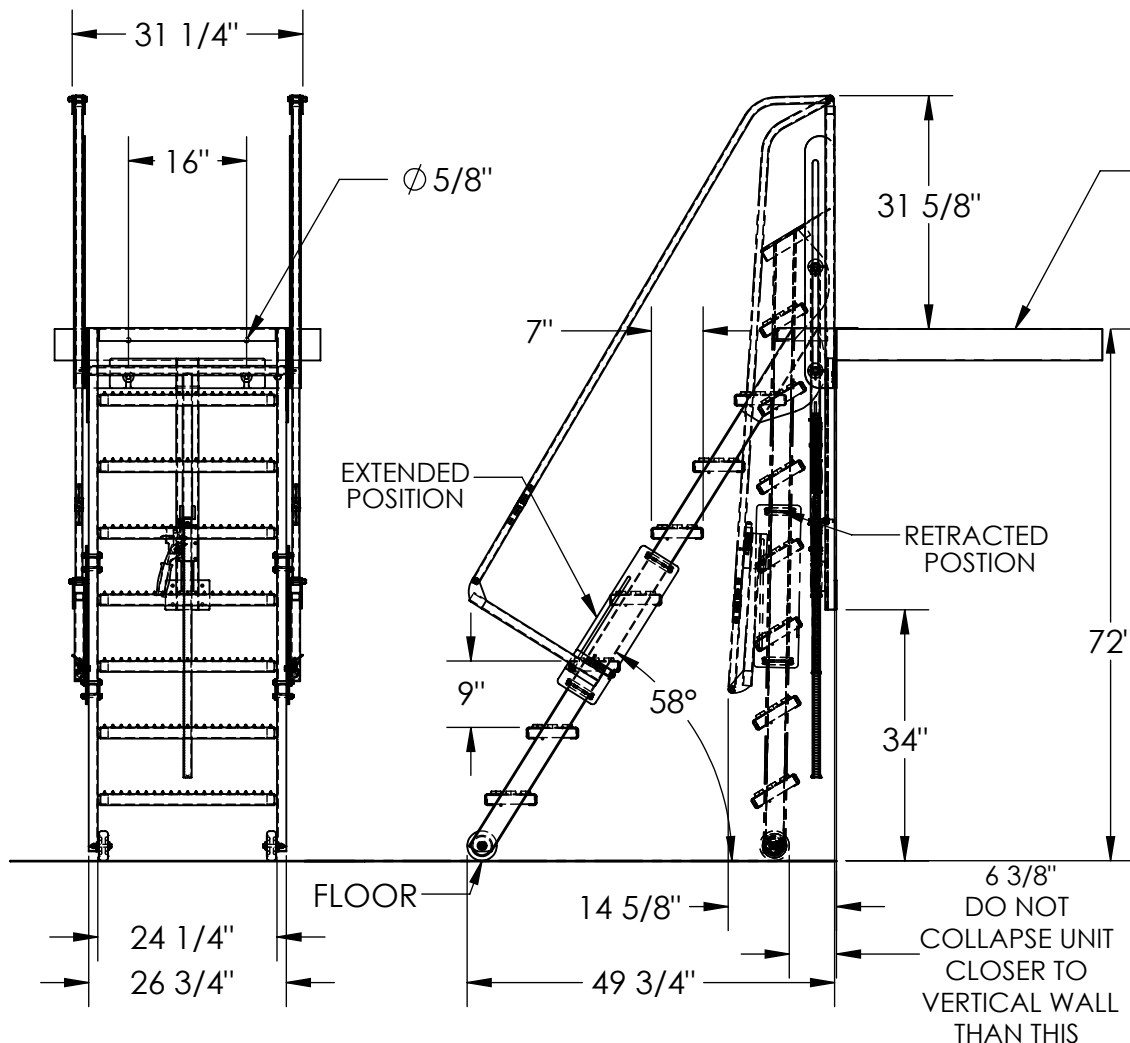
\*\*\* ANY ADDITIONS, DELETIONS, OR OMISSIONS MUST BE CORRECTED ON THIS DRAWING AS THIS DRAWING WILL BE CONSIDERED ALL INCLUSIVE \*\*\*

ALL GRAPHICS PROVIDED ARE FOR REFERENCE ONLY. IF CERTAIN DIMENSIONS ARE CRITICAL PLEASE VERIFY THOSE DIMENSIONS WITH YOUR SALESPERSON



## STANDARD FEATURES

- MODEL NUMBER: LAD-FM-72
- OVERALL WIDTH: 32 1/4"
- USABLE STEP WIDTH: 24 1/4"
- HANDRAIL HEIGHT: 31 5/8"
- STEP MATERIAL: SERRATED STEEL
- STEP DEPTH: 7"
- MAX CAPACITY: 350 LBS.
- MEZZANINE HEIGHT: 72"  
 (MEZZANINE HEIGHT TOLERANCE: ± 1/2")
- STEP HEIGHT SPACING: 9"
- EXTENDED LENGTH: 49 3/4"
- COLLAPSED LENGTH: 14 5/8" (APPROX.)
- TOUGH BAKED IN POWDER  
 COATED BLUE AND YELLOW FINISH



MEZZANINE SHOWN FOR REFERENCE ONLY - NOT INCLUDED

## SPECIAL FEATURES

NONE

IT IS THE CUSTOMER'S RESPONSIBILITY TO MAKE SURE THAT THIS UNIT COMPLIES WITH ALL LOCAL SAFETY LAWS, CODES AND REGULATIONS

DIMENSION TOLERANCE ± 1/4"

APPROVAL

I, THE UNDERSIGNED, AGREE THAT THE PRODUCT AS REPRESENTED SATISFIES DESIGN AND DIMENSION REQUIREMENTS. I ALSO ACKNOWLEDGE MY DUTY TO CONFIRM PRODUCT AND INSTALLATION COMPLIANCE WITH ALL APPLICABLE FEDERAL, STATE AND LOCAL REGULATIONS AND STANDARDS.

**UNITS REQUIRING APPROVAL DRAWINGS OR MODIFIED ARE NON-RETURNABLE**

[ ] As drawn [ ] As marked

Signed: \_\_\_\_\_ Date: \_\_\_\_\_

Printed Name: \_\_\_\_\_

LEAD TIME WILL START UPON RECEIPT OF SIGNED APPROVAL DRAWING

|                      |             |            |
|----------------------|-------------|------------|
| DISTRIBUTOR'S NAME:  |             | P.O.#      |
| VESTIL MANUFACTURING |             | X          |
| DRAWN BY: KGH        |             | W.O.#      |
| DATE: 11/29/2017     |             | X          |
| REFERENCE: X         | SCALE: 1:26 | SALES: X   |
| QUOTED LEAD TIME: X  | QUOTE # X   | FILE NAME: |
|                      |             | 44-007-676 |