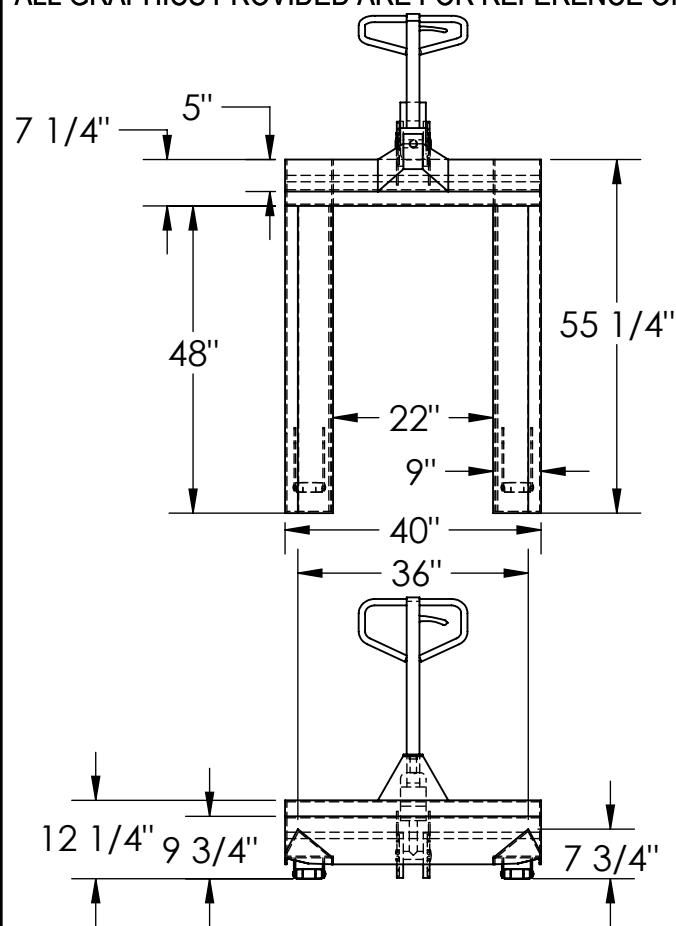


(ROLL PALLET TRUCK) - PM4-4048-RL

*** ANY ADDITIONS, DELETIONS, OR OMISSIONS MUST BE CORRECTED ON THIS DRAWING AS THIS DRAWING WILL BE CONSIDERED ALL INCLUSIVE ***

ALL GRAPHICS PROVIDED ARE FOR REFERENCE ONLY. IF CERTAIN DIMENSIONS ARE CRITICAL PLEASE VERIFY THOSE DIMENSIONS WITH YOUR SALESPERSON



STANDARD FEATURES

MODEL NUMBER IS PM4-4048-RL

OVERALL WIDTH IS 40"

USABLE WIDTH IS 22"

OVERALL LENGTH WITHOUT HANDLE IS 64 3/16"

USABLE LENGTH IS 48"

OVERALL HEIGHT WITHOUT HANDLE IS 19 5/16"

MAX CAPACITY IS 4000 LBS. UNIFORM

TOUGH BAKED IN POWDER COATED YELLOW FINISH

OVERALL MEASUREMENTS WITH HANDLE

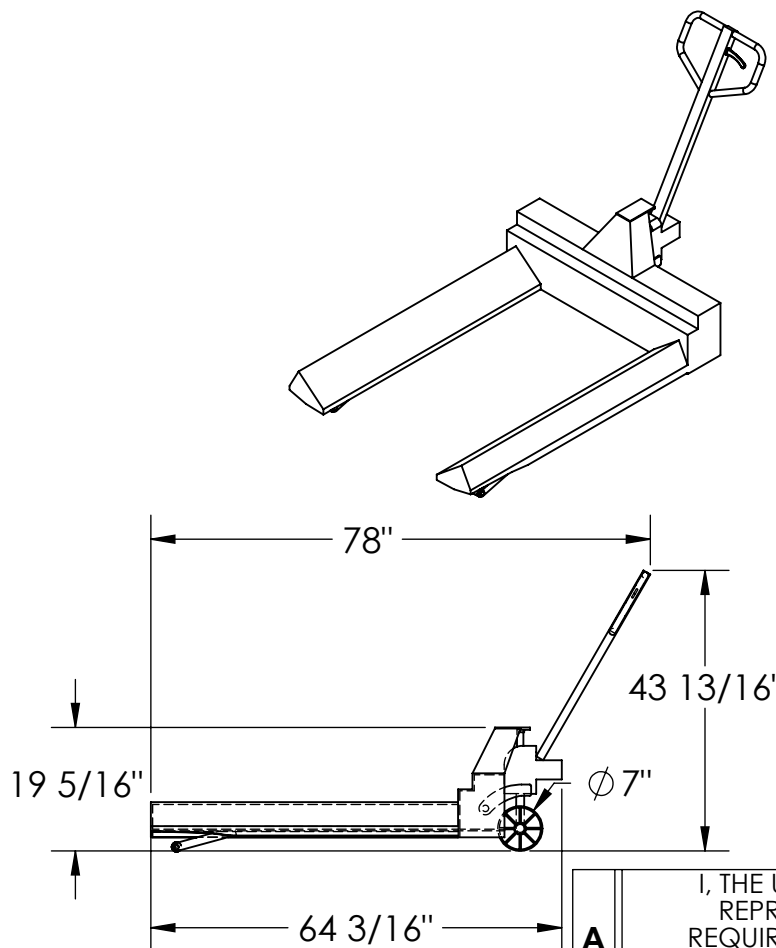
WILL VARY DEPENDING ON RESTING POSITION

LENGTH WITH HANDLE IS 78"

HEIGHT WITH HANDLE IS 43 13/16"

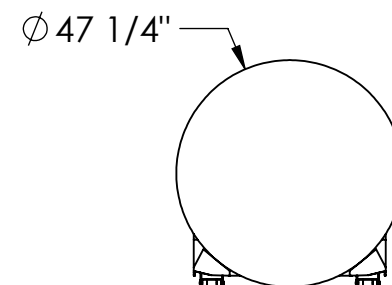
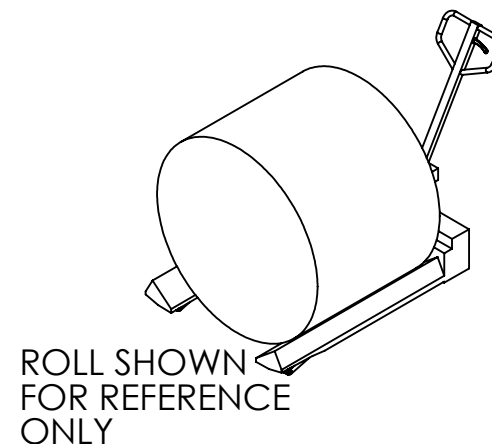
APPROX WEIGHT: 360 lbs.

DOES NOT INCLUDE WEIGHT OF POWER OR PACKAGING!!!



SPECIAL FEATURES

NONE



DIMENSION TOLERANCE ± 1/2"

I, THE UNDERSIGNED, AGREE THAT THE PRODUCT AS REPRESENTED SATISFIES DESIGN AND DIMENSION REQUIREMENTS. I ALSO ACKNOWLEDGE MY DUTY TO CONFIRM PRODUCT AND INSTALLATION COMPLIANCE WITH ALL APPLICABLE FEDERAL, STATE AND LOCAL REGULATIONS AND STANDARDS.

ANY MODIFIED UNITS ARE NON-RETURNABLE

[] As drawn [] As marked

Signed: _____ Date: _____

Printed Name: _____

LEAD TIME WILL START UPON RECEIPT OF SIGNED APPROVAL DRAWING

APPROVAL

FOR INTERNAL USE ONLY
PROJECT SIGN OFF

SALES	
ENG.	
FAB.	
POWER	

DISTRIBUTOR'S NAME:

VESTIL MANUFACTURING

DRAWN BY: X

DATE: XX/XX/XX

REFERENCE: X

SCALE: 1:30

QUOTED LEAD TIME: X

QUOTE # X

P.O.#

X

W.O.#

X

SALES:

X

FILE NAME:

15-007-142