

ELECTRONICALLY OPERATED CONTROL VALVES

L1058 Rev. A 05/99

1.0 IMPORTANT RECEIVING INSTRUCTIONS

Visually inspect all components for shipping damage. Shipping damage is **not** covered by warranty. If shipping damage is found, notify carrier at once. The carrier is responsible for all repair and replacement costs resulting from damage in shipment.

SAFETY FIRST

2.0 SAFETY ISSUES



Read all instructions, warnings, and cautions carefully. Follow all safety precautions to avoid personal injury or property damage during system operation. Enerpac cannot be responsible for damage or injury resulting from unsafe product use, lack of maintenance or incorrect product and/or system operation. Contact Enerpac when in doubt as to the safety precautions and operations. If you have never been trained on high-pressure hydraulic safety, consult your distribution or service center for a free Enerpac Hydraulic safety course.

Failure to comply with the following cautions and warnings could cause equipment damage and personal injury.

A **CAUTION** is used to indicate correct operating or maintenance procedures and practices to prevent damage to, or destruction of equipment or other property.

A **WARNING** indicates a potential danger that requires correct procedures or practices to avoid personal injury.

A **DANGER** is only used when your action or lack of action may cause serious injury or even death.



WARNING: Wear proper personal protective gear when operating hydraulic equipment.



WARNING: Stay clear of loads supported by hydraulics. A cylinder, when used as a load lifting device, should never be used as a load holding device. After the load has been raised or lowered, it must always be blocked mechanically.



WARNING: USE ONLY RIGID PIECES TO HOLD LOADS. Carefully select steel or wood blocks that are capable of supporting the load. Never use a hydraulic cylinder as a shim or spacer in any lifting or pressing application.



DANGER: To avoid personal injury keep hands and feet away from cylinder and workpiece during operation.



WARNING: Do not exceed equipment ratings. Never attempt to lift a load weighing more than the capacity of the cylinder. Overloading causes equipment failure and possible personal injury. The cylinders are designed for a max. pressure of 700 bar. Do not connect a jack or cylinder to a pump with a higher pressure rating.



Never set the relief valve to a higher pressure than the maximum rated pressure of the pump. Higher settings may result in equipment damage and/or personal injury.



WARNING: The system operating pressure must not exceed the pressure rating of the lowest rated component in the system. Install pressure gauges in the system to monitor operating pressure. It is your window to what is happening in the system.



CAUTION: Avoid damaging hydraulic hose. Avoid sharp bends and kinks when routing hydraulic hoses. Using a bent or kinked hose will cause severe back-pressure. Sharp bends and kinks will internally damage the hose leading to premature hose failure.



Do not drop heavy objects on hose. A sharp impact may cause internal damage to hose wire strands. Applying pressure to a damaged hose may cause it to rupture.



IMPORTANT: Do not lift hydraulic equipment by the hoses or swivel couplers. Use the carrying handle or other means of safe transport.



CAUTION: Keep hydraulic equipment away from flames and heat. Excessive heat will soften packings and seals, resulting in fluid leaks. Heat also weakens hose materials and packings. For optimum performance **do not** expose equipment to temperatures of 65°C [150°F] or higher. Protect hoses and cylinders from weld spatter.



DANGER: Do not handle pressurized hoses. Escaping oil under pressure can penetrate the skin, causing serious injury. If oil is injected under the skin, see a doctor immediately.



WARNING: Only use hydraulic cylinders in a coupled system. Never use a cylinder with unconnected couplers. If the cylinder becomes extremely overloaded, components can fail catastrophically causing severe personal injury.



WARNING: BE SURE SETUP IS STABLE BEFORE LIFTING LOAD.

Cylinders should be placed on a flat surface that can support the load. Where applicable, use a cylinder base for added stability. Do not weld or otherwise modify the cylinder to attach a base or other support.



Avoid situations where loads are not directly centered on the cylinder plunger. Off-center loads produce considerable strain on cylinders and plungers. In addition, the load may slip or fall, causing potentially dangerous results.



Distribute the load evenly across the entire saddle surface. Always use a saddle to protect the plunger.



IMPORTANT: Hydraulic equipment must only be serviced by a qualified hydraulic technician. For repair service, contact the Authorized ENERPAC Service Center in your area. To protect your warranty, use only ENERPAC oil.



WARNING: Immediately replace worn or damaged parts by genuine ENERPAC parts. Standard grade parts will break causing personal injury and property damage. ENERPAC parts are designed to fit properly and withstand high loads.

3.0 GENERAL INFORMATION

The Enerpac valve design incorporates the following features into a single unit:

- 10,000 PSI operating pressure
- Load Holding
- Electrical Fail-safe Control
- Manual Override (VS-4 only)
- The Enerpac valves are specifically designed for use with Enerpac electric powered pumps and electric controls.

3.1 Capacity

Capacity is 1040 cubic inch per minute.

4.0 OPERATION

1. Connect and secure hoses and cylinder.
2. Connect control station.
3. Connect motor to specified electrical outlet.

Note: Valves to be connected to 115 volts AC only.

4. Start pump motor. The valve is now automatically in the HOLD position.

Note: Both valves are fail-safe; if the control station is not actuated or the electrical supply to the valves is interrupted, the valve will automatically shift to the HOLD position, allowing the pump output to be directed to the tank and the cylinder load to be held. The 4-way valve can be operated manually by depressing the rubber or pin actuator at the proper end of the spool valve.

5.0 3-WAY VALVE CONTROL STATION

1. To advance load, depress ADV button on control station.
2. To hold load, remove finger from control station.
3. To retract load, depress RET button on control station.
4. For automatic return, switch toggle switch to AUTO and use ADV button on control station only.

6.0 MAINTENANCE

1. Periodically check all hydraulic connections to be sure they are tight. Loose or leaking connections may cause erratic and/or total loss of operation. Replace or repair all defective parts promptly.
2. Periodically check the hydraulic oil level in your system. Refer to the oil filling instructions for complete data.
3. Change hydraulic oil approximately every 250-300 hours of operation. In dusty or dirty areas, it may be necessary to change the oil more frequently.

7.0 HYDRAULIC SYSTEM

1. Keep all hydraulic components free of dirt, grease, chips, etc.
2. Keep the hydraulic component operating areas uncluttered and free of unnecessary equipment.
3. Periodically check your hydraulic system for possible loose connections, leaks, etc. Replace or properly repair damaged or leaking hydraulic components immediately.
4. Check hydraulic oil in your hydraulic system every 40 hours of operation or more frequently in unusually dirty or dusty areas.

8.0 TROUBLESHOOTING

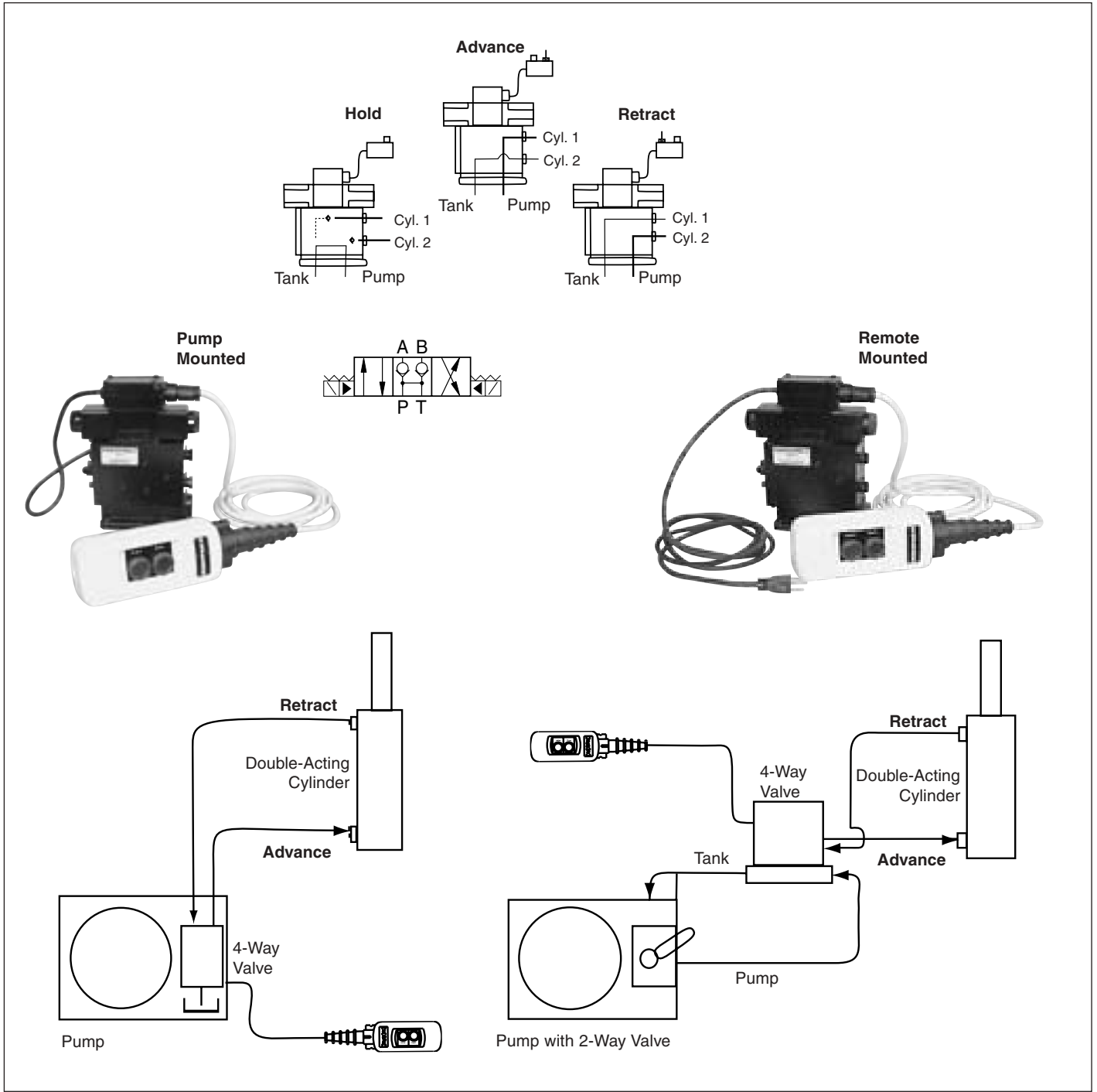
1. If the system will not build pressure, check relief valves in pump for proper setting (refer to pump repair sheet). Check and secure all hose connections. If trouble is not corrected by this action, remove cylinder and hoses from valve. Now place a 10,000 PSI gauge directly in valve port No. 1 (on 3-way valves, place gauge directly in valve port) and place the valve in ADV position. If pressure cannot be developed, the unit should be taken to the nearest ENERPAC franchised service center. If pressure develops, the problem is located in the cylinder, hoses, or couplers.
2. The cylinder will not load or the cylinder creeps when the valve is in the HOLD position. This is an indication of worn valve seats which must be replaced by a service center.
3. The cylinder is hung-up in either the ADV or RET position. This type of problem is usually a symptom of contaminated hydraulic oil. The system should be drained and refilled with fresh ENERPAC hydraulic fluid.
4. On the 4-way valve, center the spool valve manually by depressing the rubber actuation the spool valve solenoid cover. Now press the ADV and RET buttons several times checking the valve operation and cylinder movement.

9.0 STORAGE INSTRUCTIONS

In the event that the unit would be stored for any prolonged period of time (30 days or more), prepare the unit as follows:

1. Wipe the entire unit clean.

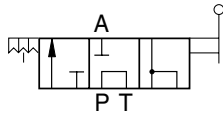
2. Disconnect all hydraulic and electrical lines to prevent accidental operation.
3. Cover the unit with some kind of protective cover.
4. Store in a clean, dry environment that is NOT exposed to extreme temperatures.



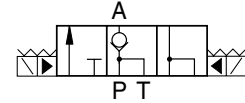
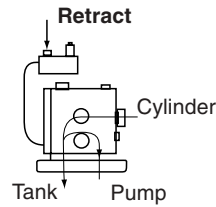
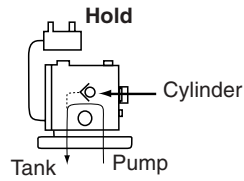
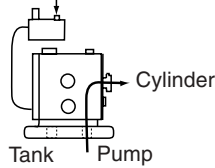
4-Way Valve, Pump Mounted

4-Way Valve, Remote Mounted

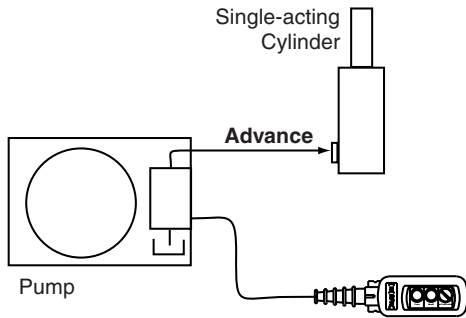
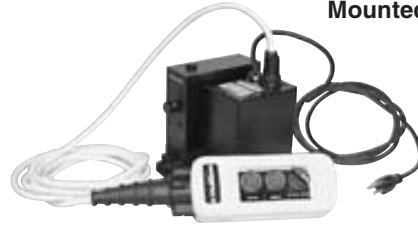
Pump Mounted



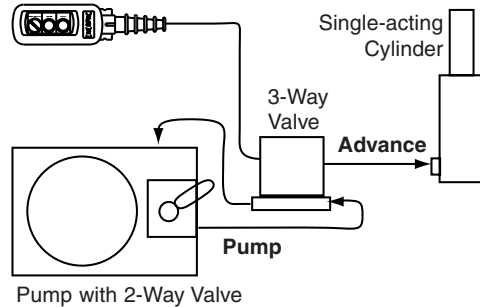
Advance



Remote Mounted



3-Way Valve, Pump Mounted



3-Way Valve, Remote Mounted

Australia
ENERPAC, Applied Power Australia Ltd.
Block V Unit 3,
Regents Park Estate,
391 Park Road
Regents Park NSW 2143
(P.O. Box 261) Australia
Tel: +61 297 438 988
Fax: +61 297 438 648

Brazil
Power Packer do
Brasil LTDA
Avenida Ferraz
Alvim nº 1012
(09961-550) - Diadema
São Paulo, Brazil
Tel: +55 11 4051 1188
Fax: +55 11 4051 3699

China
Shanghai Blackhawk
Machinery Co Ltd
15H Jinxuan Building
238 Nandan Road (E)
Shanghai, 200030, China
Tel: +86 21 6469 8732
Fax: +86 21 6469 8721

France, Greece, Turkey, Middle East, Africa
ENERPAC S.A.
B.P. 200, Parc d'Activités
du Moulin de Massy
F-91882 Massy CEDEX (Paris) France
Tel: +33 01 601 368 68
Fax: +33 01 692 037 50

Germany, Denmark, Scandinavia, Austria, Switzerland, Eastern Europe, CIS
ENERPAC
Applied Power GmbH
P.O. Box 300113
D-40401 Düsseldorf, Germany
Tel: +49 211 471 490
Fax: +49 211 471 49 28/40

Holland, Belgium, Luxembourg,
ENERPAC B.V.
Storkstraat 25
P.O. Box 269
3900 AG Veenendaal, Holland
Tel: +31 318 535 911
Fax: +31 318 535 848
+31 318 526 645

Hong Kong
ENERPAC
Room 907 Workingberg
Commercial Building
41-47 Marble Road,
North Point
Tel: +852-2561 6295
Fax: +852-2561 6772

India
ENERPAC
Hydraulic (India) Pvt Ltd
Plot No. A-571
MIDC, TTC Industrial Area
Mahape-400 701,
Navi Mumbai, India
Tel: +91 22 769 47 78
Fax: +91 22 769 84 73

Italy
ENERPAC Applied Power Italiana S.p.A.
Via Canova 4,
20094 Corsico (Milano)
Tel: +39 2 486 111 00
Fax: +39 2 486 012 88

Japan
Applied Power Japan Ltd.
10-17 Sasame Kita-Machi
Toda-Shi, Saitama #335, Japan
Tel: +81 048 421 2311
Fax: +81 048 421 8949

Malaysia
Applied Power Hytec (M) Sdn Bhd 22-1,
Jalan SS 15/8B
Subang Jaya, 47500
P.J., Selangor
West Malaysia
Tel: (0203) 73729 23/39/19
Fax: (0203) 737 29 18

Mexico
ENERPAC Applied Power Mexico S.A. de
C.V.
Avenida Principal,
La Paz #100
Fracc. Industrial La Paz
42084 Pachuca, Hidalgo
Tel: +52 771 337 00
Fax: +52 771 838 00

Singapore
Applied Power Asia Pte Ltd
47 Jalan Pemimpin,
#01-02 & 01-03
Sin Cheong Bldg
Singapore 577200
Thomson Road,
P.O. Box 114
Singapore 915704
Tel: +65 258 16 77
Fax: +65 258 28 47

South Korea
ENERPAC
Applied Power Korea Ltd.
163-12 Dodang-Dong, Choong-Ku,
Buchun-shi, Kyunggi-Do
Republic of Korea
Tel: +82 32 675 08 36
Fax: +82 32 675 30 02

Spain, Portugal
ENERPAC Applied Power International S.A.
A. Valgrande 14
Nave 12
28108 Alcobendas (Madrid), Spain
Tel: +34 91 661 11 25
Fax: +34 91 661 47 89

United Kingdom, Ireland
ENERPAC Limited
Unit 3 Colemeadow Road
North Moons Moat, Redditch
Worcester B98 9PB
United Kingdom
Tel: +44 01527 598 900
Fax: +44 01527 585 500

USA, Canada, Latin America and Caribbean
ENERPAC
6101 N. Baker Road
Milwaukee, WI 53209 USA
Tel: +1 414 781 66 00
Fax: +1 414 781 10 49

USA
User inquiries:
+1 800 433 2766
Distributor inquiries/orders:
+1 800 558 0530

Canada
User inquiries:
+1 800 426 4129
Distributor inquiries/orders:
+1 800 426 2284

Internet
www.enerpac.com

e-mail
info@enerpac.com

All Enerpac products are guaranteed against defects in workmanship and materials for as long as you own them. Under this guarantee, free repair or replacement will be made to your satisfaction.

For your nearest authorized Enerpac Service Center, visit us at www.enerpac.com