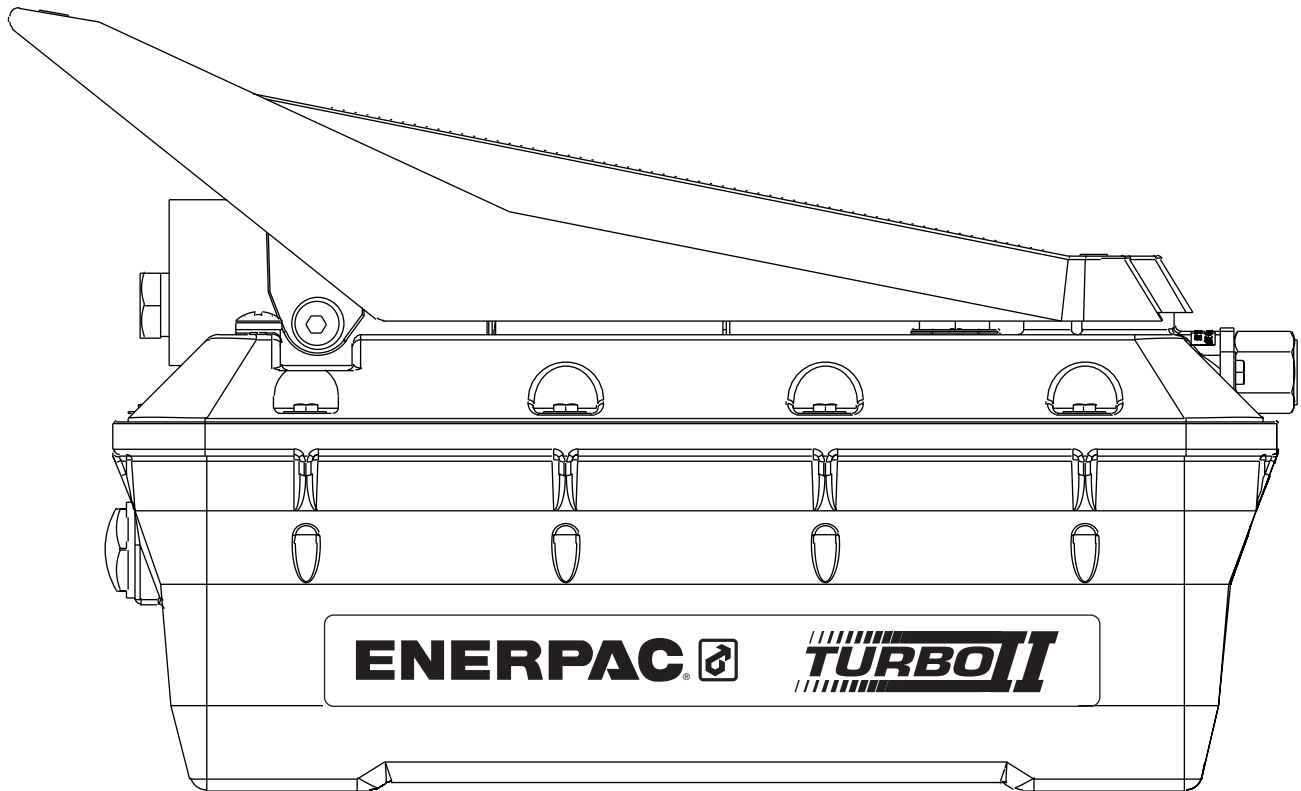


**To Protect Your Warranty, Use Only ENERPAC Hydraulic Oil.**

Enerpac recommends that all kit components be installed to insure optimum performance of the repaired unit.

**NOTE: Storing the pump in the vertical position may cause it to loose its prime. If pump loses its prime:**

1. Remove cover.
2. Remove relief valve.
3. Fill chamber with oil
4. Replace relief valve. Apply Loctite 545 to threads and torque to 10–12 ft-lbs. [14–16 Nm]
5. Replace pump cover. Tighten every other fastener around the perimeter of the cover in one continuous direction.



**Contents**

Figure 1 — Treadle Assembly, T Version.....	2	Figure 7 — Air Motor Assembly .....	8
Figure 2 — Treadle Assembly, M, C, S Version .....	3	Figure 8 — Release Valve .....	9
Figure 2a & 2b — Handle Assembly, R Version.....	4	Figure 9 — Manual Valve .....	10
Figure 3 — Cover Assembly.....	5	Figure 10 — Pump Manifolds, PAS Version.....	11
Figure 4 — Hydraulic Section Detail .....	6	Figure 11 — Pump Manifold, PAC Version .....	11
Figure 5 — Seal Push Tool.....	7	Table 1 — Relief Valve Setting .....	12
Figure 6 — Seal Push Tool.....	7	Table 2 — Repair Kit Application.....	12

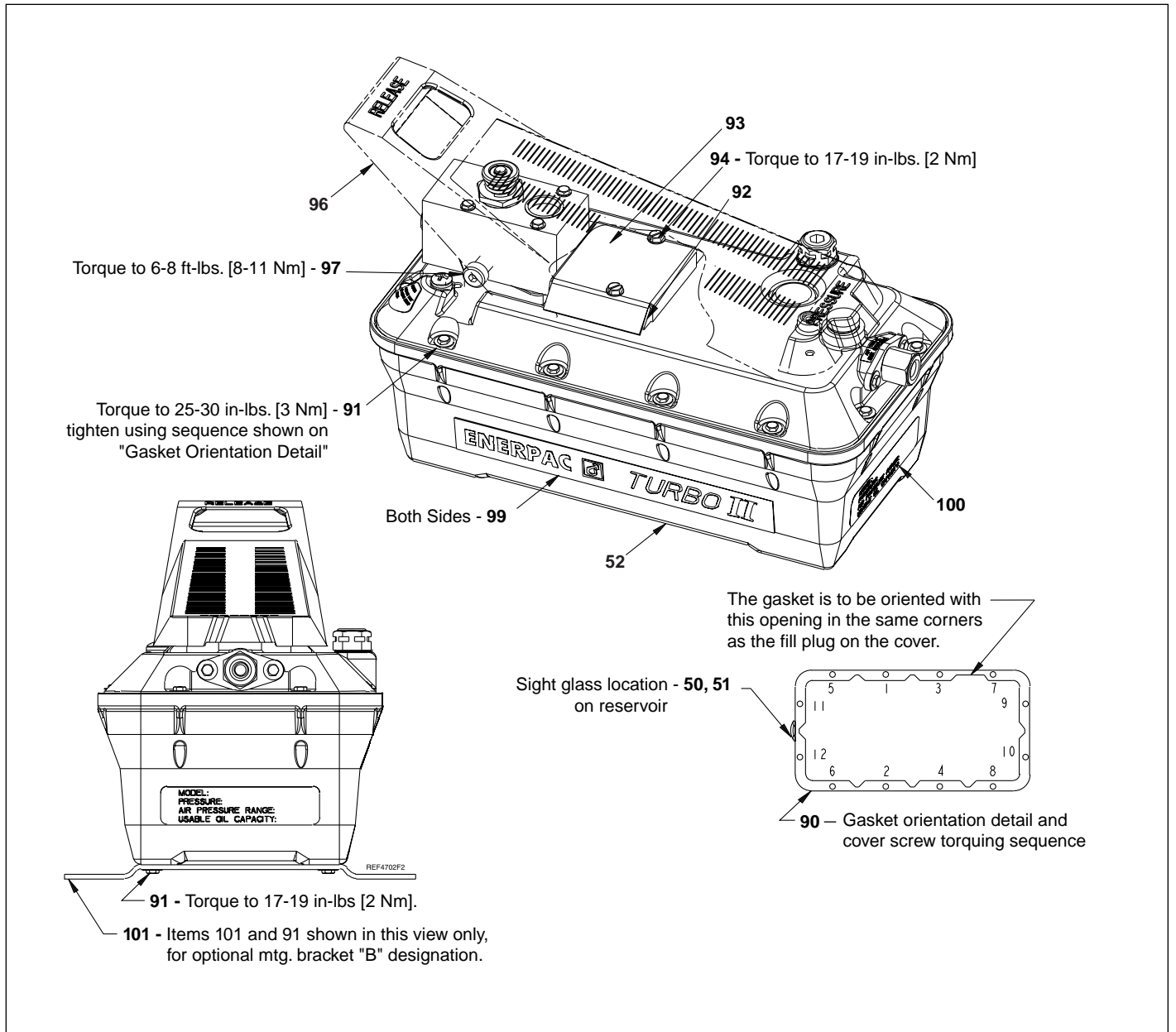


Figure 1

Repair Parts List for Figure 1							
Item	Part Number	Qty.	Description	Item	Part Number	Qty.	Description
50	DA12288022	1	Sight Glass	92	DA8625116	1	Muffler
51	B1908503	1	O Ring	93	DA5690098	1	Muffler Cover
52	DC2251900SR	1	Reservoir, 2 Lt. Yellow	94	DC1523028	2	Slotted Hex Washer Head Scr.
	DC2252900SR	1	Reservoir, 2 Lt. Black	96	DA4849218	1	Treadle
	DC2253900SR	1	Reservoir, 2 Lt. Red	97	DA4236242	2	Shoulder Screw
	DC2257900SR	1	Reservoir, 2 Lt. Translucent	99	DC2262026	1	Decal, Enerpac Turbo II Black
	DC975286SR	1	Reservoir, 5 Lt. Black		DC2260026	1	Decal, Enerpac Turbo II White
90	DC4027167	1	Reservoir Gasket	100	DA4296026	1	Model No. Decal
91	DA5938028	16	Hi Lo Screw	101	DA5389111	1	Mtg. Bracket

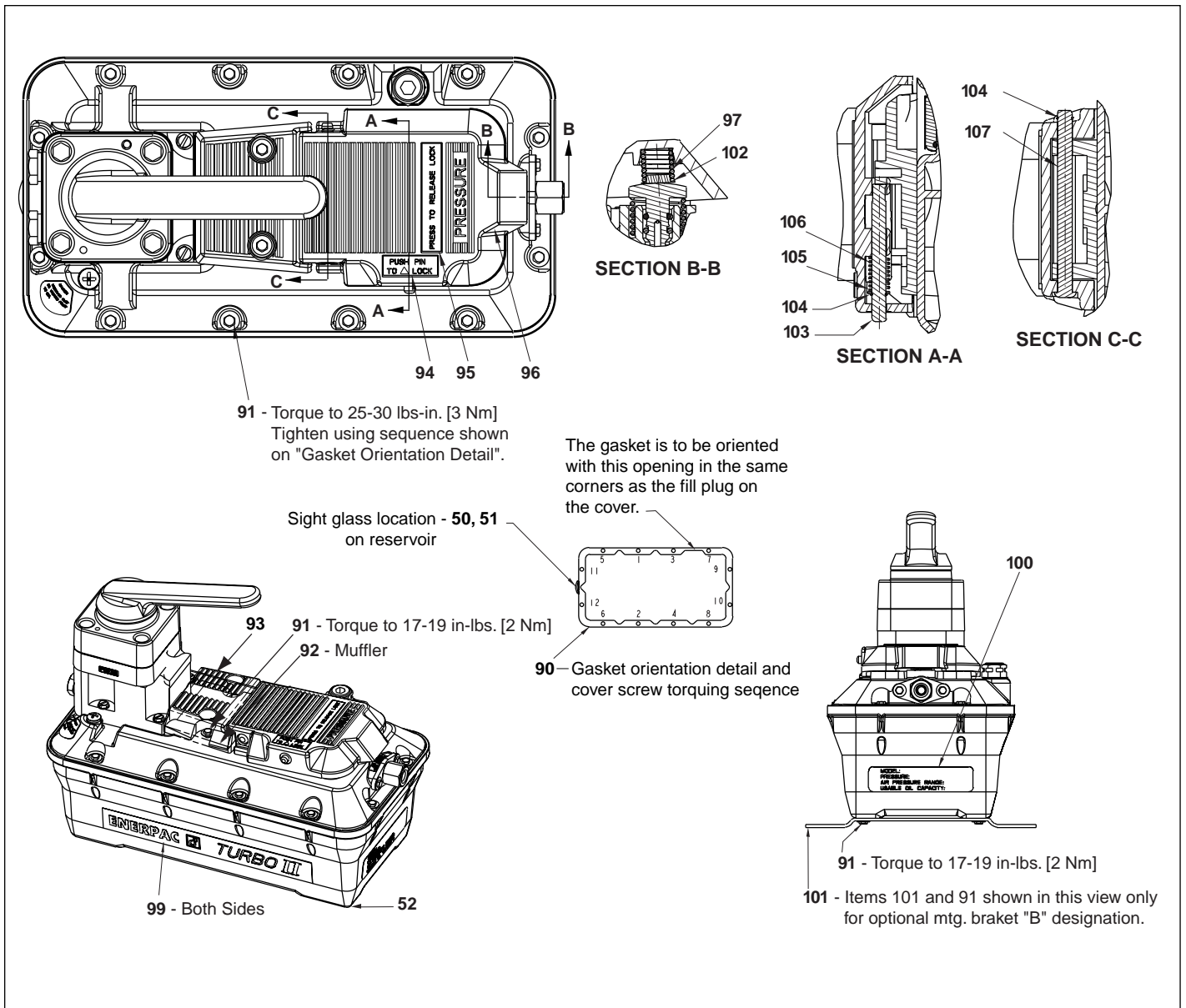
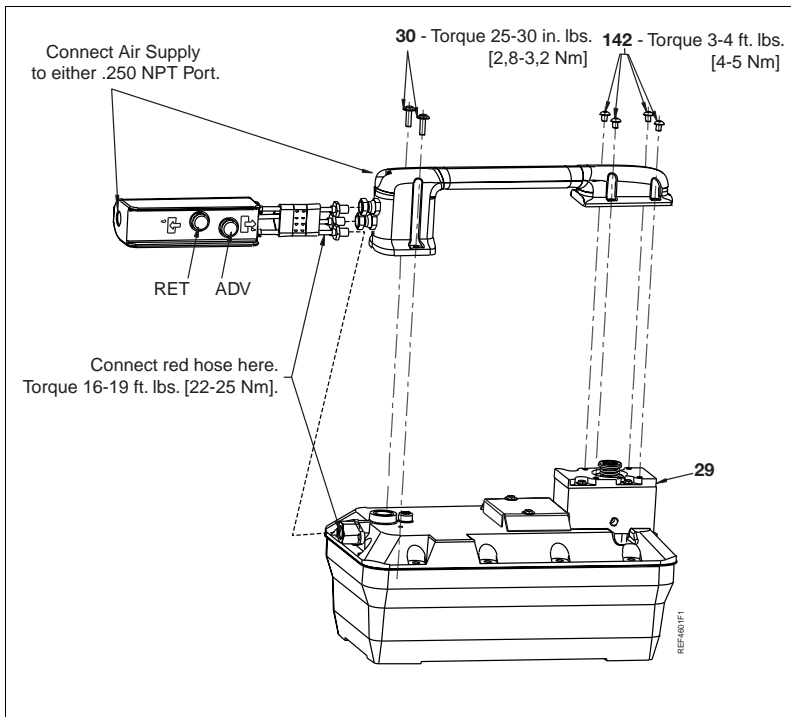


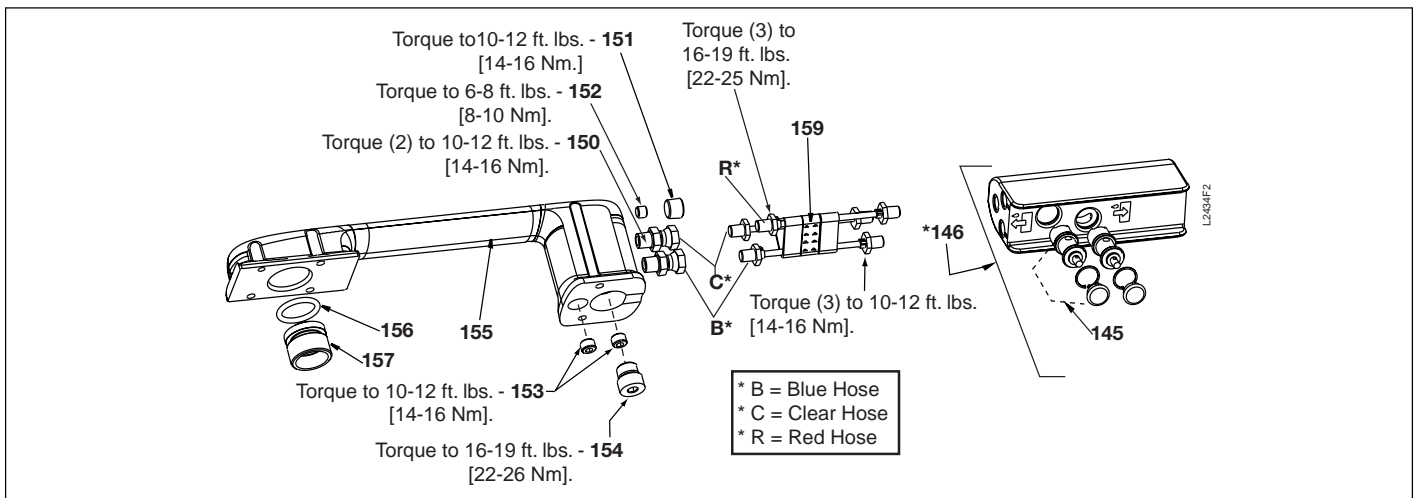
Figure 2

Repair Parts List for Figure 2							
Item	Part Number	Qty.	Description	Item	Part Number	Qty.	Description
50	DA12288022	1	Sight Glass	96	DA7937218	1	Treadle
51	B1908503	1	O Ring	97	DA8506110	1	Spring
52	DC2251900SR	1	Reservoir, 2 Lt. Yellow	99	DC2262026	2	Decal, Enerpac Turbo II Black
	DC2252900SR	1	Reservoir, 2 Lt. Black		DC2260026	2	Decal, Enerpac Turbo II White
	DC2253900SR	1	Reservoir, 2 Lt. Red		100	DA4296026	1
	DC2257900SR	1	Reservoir, 2 Lt. Translucent	101	DA5389111	1	Mtg. Bracket
	DC975286SR	1	Reservoir, 5 Lt. Black	102	DA8670013	1	Spring Guide
90	DC4027167	1	Reservoir Gasket	103	DA7940061	1	Latch Pin
91	DA5938028	18	Hi Lo Screw	104	DA5025349	2	Ret. Ring
92	DA8625116	1	Muffler	105	DA8505186	1	Spacer
93	DA7935111	1	Mtg. Bracet Casting	106	DA8508110	1	Spring
94	DA8744026	1	Decal	107	DA7939061	1	Hinge Pin
95	DA8743026	1	Decal				



**Figure 2a, Remote Pendant Turbo Pump Assembly**

Repair Parts List for Figure 2a			
Item	Part Number	Qty.	Description
29	DC2355186	1	Valve Spacer
30	DA5938028	2	Hi Lo Screw
142	B1320028	4	10-32 x .38 Screw



**Figure 2b, Pendant Handle Assembly**

Repair Parts List for Figure 2b							
Item	Part Number	Qty.	Description	Item	Part Number	Qty.	Description
145	DC2363660SR	2	Air Cartridge Valve	154	B1005006	1	#6 SAE Hex Plug
*146	DC2354840SR	1	Air Pendant Assy. (Includes No 145)	155	DC2347070SR	1	Handle Assembly
150	DC2367006	2	1/8" NPT Swivel Fitting	156	★B1018503	1	O-ring 70 DUPR -213
151	A1008245	1	Hex Plug	157	DC473051	1	Pneumatic Dump Piston
152	A1006245	1	1/16 Flush Plug w/ Sealant	159	DC2365646SR	1	Hose Assembly
153	A1007245	2	1/8 Flush Plug w/ Sealant				
★ Items included in Pump Repair Kit, see Table 2 page 12.							

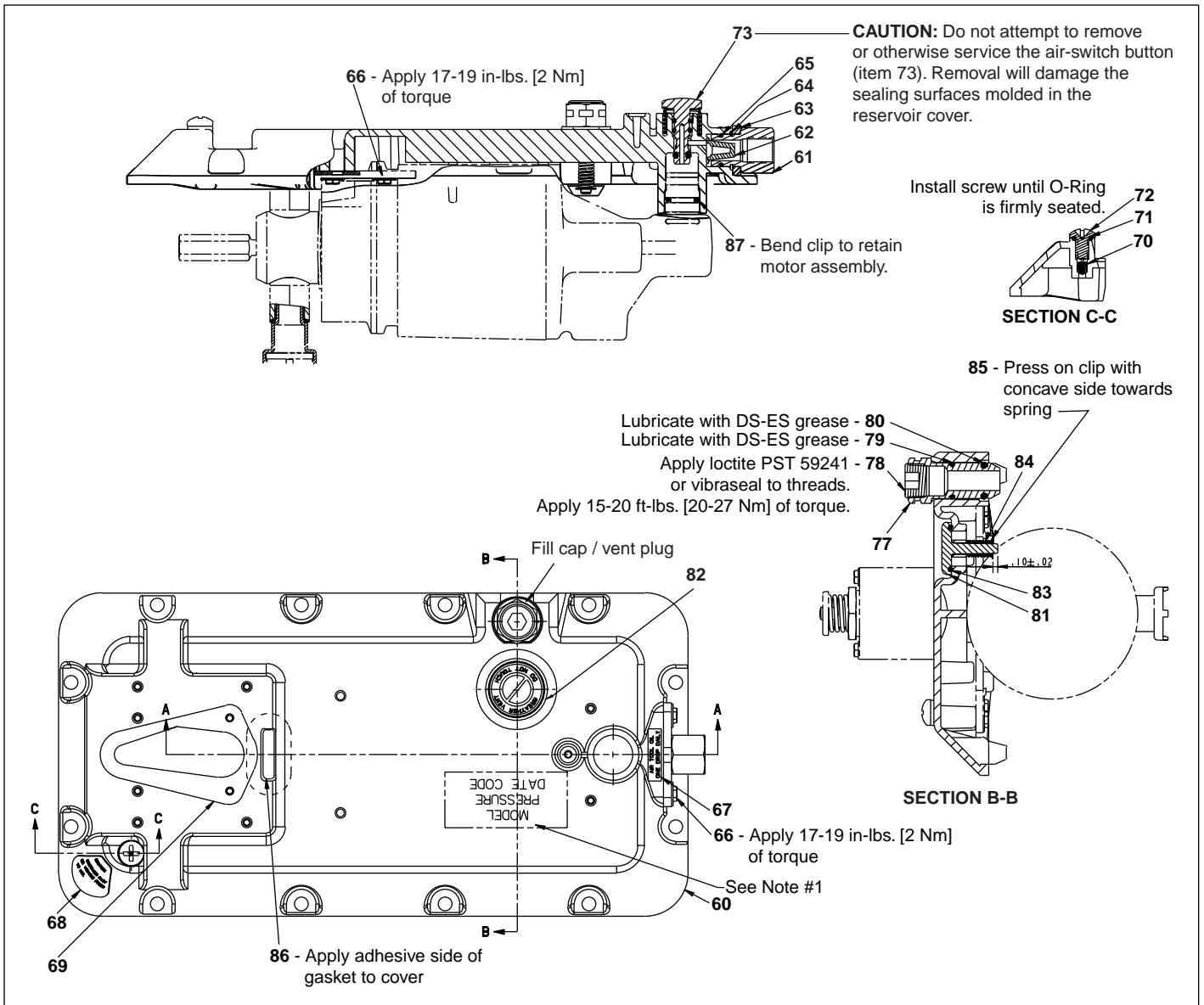
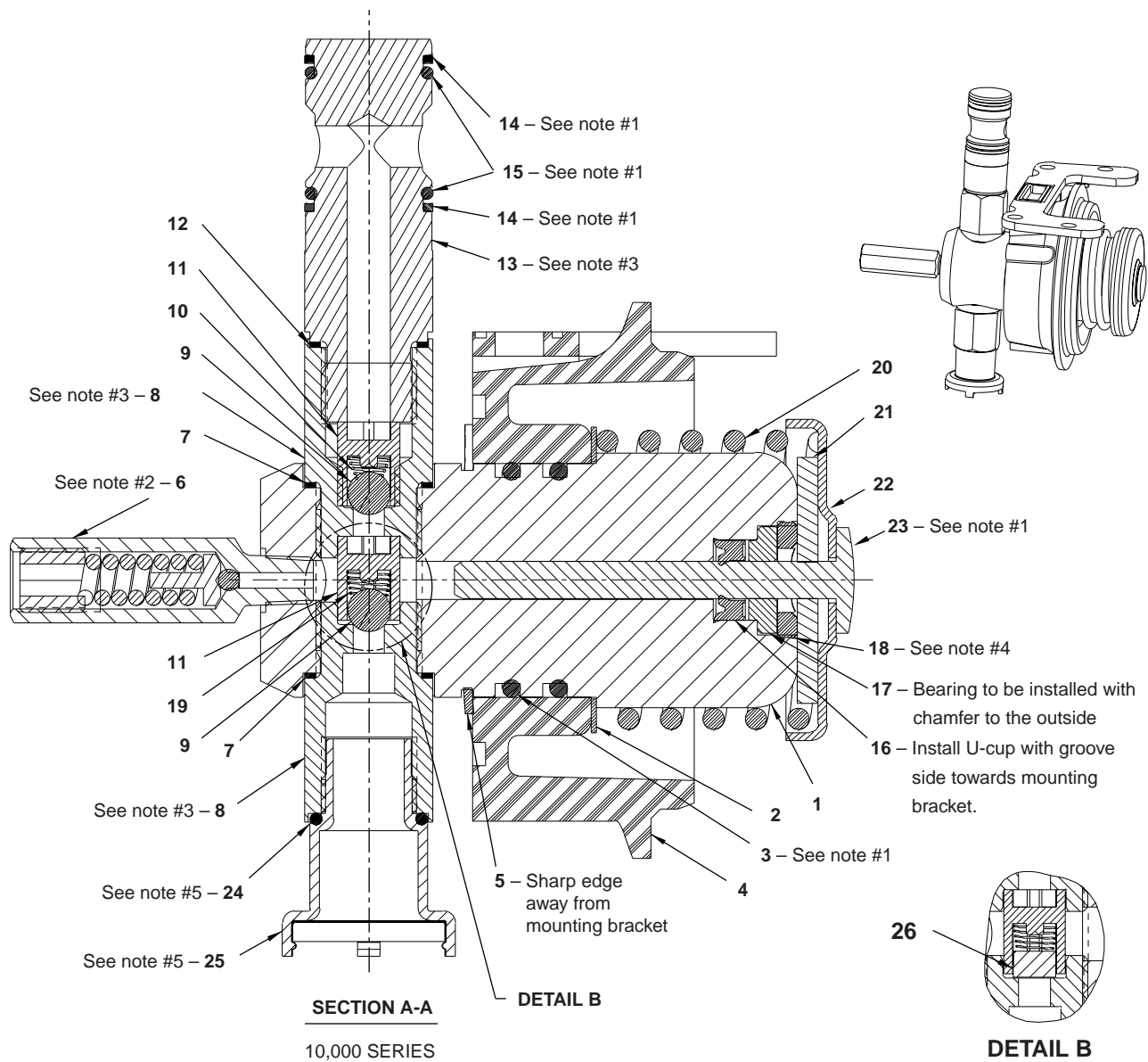


Figure 3

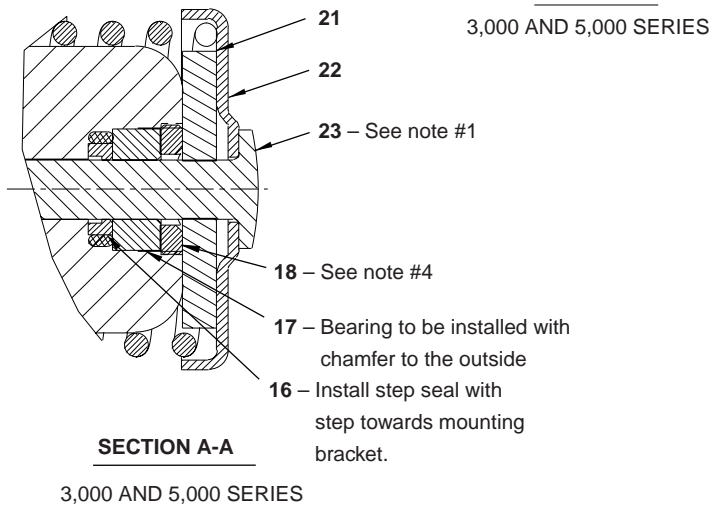
Repair Parts List for Figure 3							
Item	Part Number	Qty.	Description	Item	Part Number	Qty.	Description
60	DC3913900SR	1	Cover Assy. (includes 61-87)	73	Not serviceable	1	Air Button
61	DA5295034	1	Swivel Coupler	77	DA4871118	1	Breather
62	★DA5015118SR	1	Filter	78	A1009245	1	3/8 Flush Plug W/Sealant
63	DA4847799	1	Stamped Bracket	79	★DA5349503	1	O Ring (Wear Coated)
64	DA5026349	1	Ret. Ring	80	★B1010503	1	O Ring
65	★B1220503	1	O Ring Ref B839503	81	DC708440	1	Poppet
66	DA5938028	6	Hi Lo Screw	82	U972038026-2	1	Breather Vent Decal
67	U972038026-3	1	Air Tool Oil Decal	83	B1224503	1	O Ring Ref J711041
68	DA7931026	1	Caution Decal	84	DC821110	1	Compression Spring
69	★DA6957037	1	Gasket	85	DC4077160	1	3/16" Retainer
70	★DA4390118	1	Filter	86	★DA6956037	1	Gasket
71	★B1005503	1	O Ring	87	★DA5521149	1	Retaining Pin
72	DC1522028	1	Phillips Heads Screw				

★ Items included in Pump Repair Kit, see Table 2 page 12.



**Notes:**

1. Lubricate seals with moderate amount of DS-ES grease.
2. Apply Loctite 545 on threads, and apply 10–12 ft-lbs. [14-16 Nm] of torque to item #6.
3. Apply Loctite 243 on threads and apply 34–41 ft-lbs. [46-55 Nm] of torque to item #8 and #13
4. Apply one drop of Loctite 242 on threads, and apply 16–18 ft-lbs. [22-24 Nm] of torque to item #18
5. Items #24 and #25 are installed finger tight.



**Figure 5**

### Repair Parts List for Figure 4

Item	Part Number	Qty.	Description	Item	Part Number	Qty.	Description
1	DC114030	1	Hydraulic Cylinder, Turbo 10 KSI	17	★ CB624108	1	Bearing 10 KS
	DC116030	1	Hydraulic Cylinder, Turbo 3 KSI		★ DA9056108	1	Bearing 3 KSI
	DC115030	1	Hydraulic Cylinder, Turbo 5 KSI		★ DA5352155	1	Bearing 5 KSI
2	DA4298108	1	Washer	18	★ DA1204044	1	Bearing Retainer 10 KSI
3	★ B1258503	2	O-Ring		★ DA7888044	1	Bearing Retainer 3 KSI
4	DA4287111	1	Mtg. Bracket		★ DA1204044	1	Bearing Retainer 5 KSI
5	DA4343044	1	Bowed Ret. Ring	19	★ DA6911210	1	Conical Spring
6	DA8802900SR	1	Relief Valve Assy	20	DA4285110	1	Spring
7	★ DA3811167	2	Copper Gasket	21	DA6600108	1	Rubber Washer 10 KSI
8	DC283290SR	2	Seat		DA9280108	1	Rubber Washer 3 KSI
9	★ B1007016	2	1/4" Dia. Ball		DA5976108	1	Rubber Washer 5 KSI
10	★ DA4874110	1	Conical Spring	22	DA4284108	1	Spring Washer, Turbo, 10 KSI
11	★ DA3682013	2	Ball Guide		DA9281108	1	Spring Washer, Turbo, 3 KSI
12	★ DC170167	1	Copper Gasket		DA4628108	1	Spring Washer, Turbo, 5 KSI
13	DC5268SR	1	Pressure Tube 10 KSI	23	CB180040	1	Plunger, 10 KSI
14	★ DA4974367	2	Backup Ring		CB185040	1	Plunger, 3 KSI
15	★ B1016803	2	O-Ring – Global		DA1219040	1	Plunger, 5 KSI
16	★ CB918041	1	U-Cup 10 KSI	24	★ B1221503	1	O-Ring Ref. C403503
	★ DA9269476	1	Rod Seal 3 KSI	25	DC442900SR	1	Intake Tube Assy
	★ DA5351476	1	Step Seal 5 KSI	26	★ DC4440	1	Poppet

★ Items included as part of Repair Kits: (DC2222900K, 10,000 Series); (DC2220900K, 3,000 series); (DC2221900K, 5,000 series)  
 Also included in complete Pump Repair Kit, see Table 2, page 12.

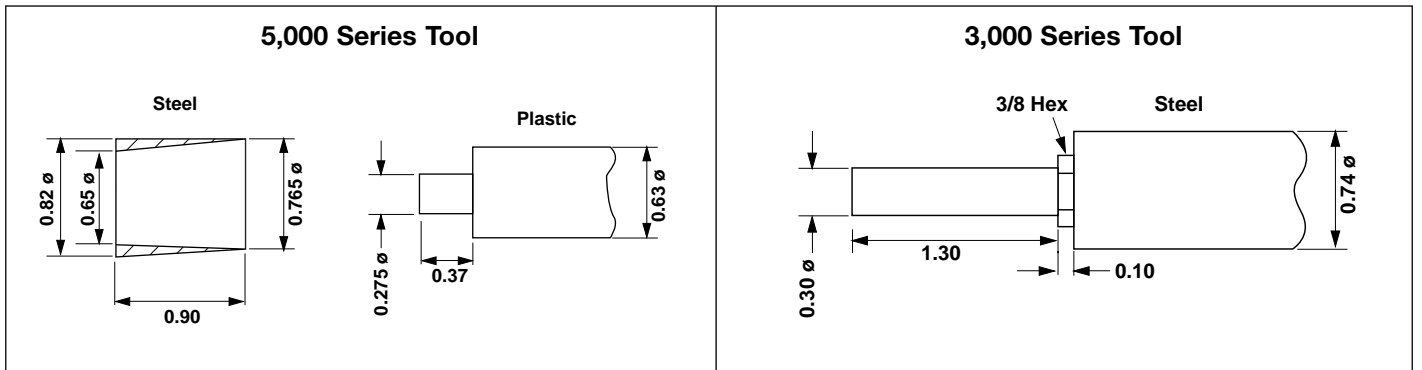


Figure 5

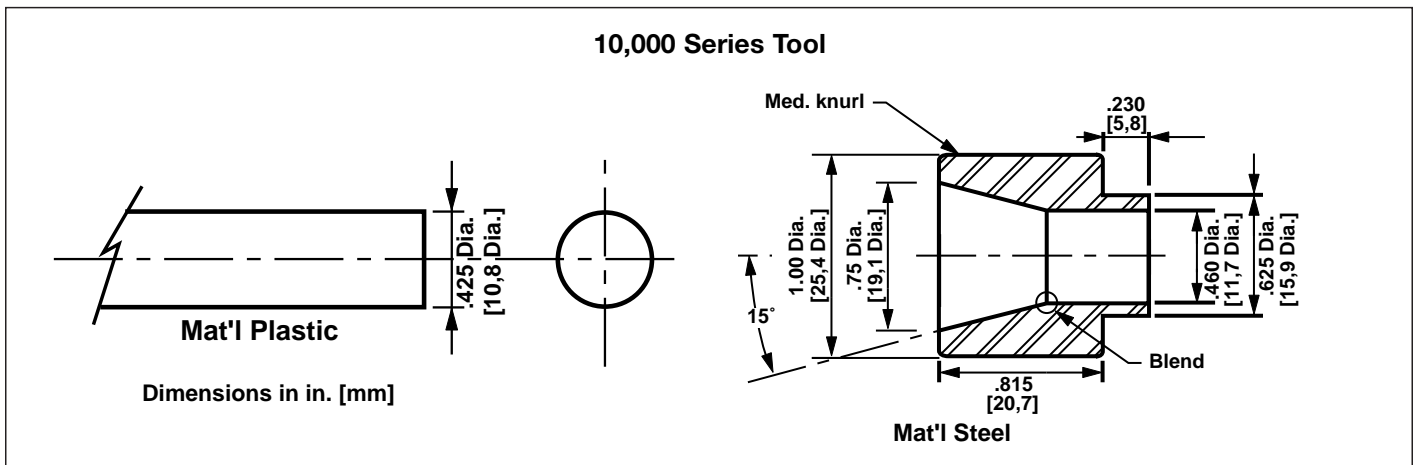


Figure 6

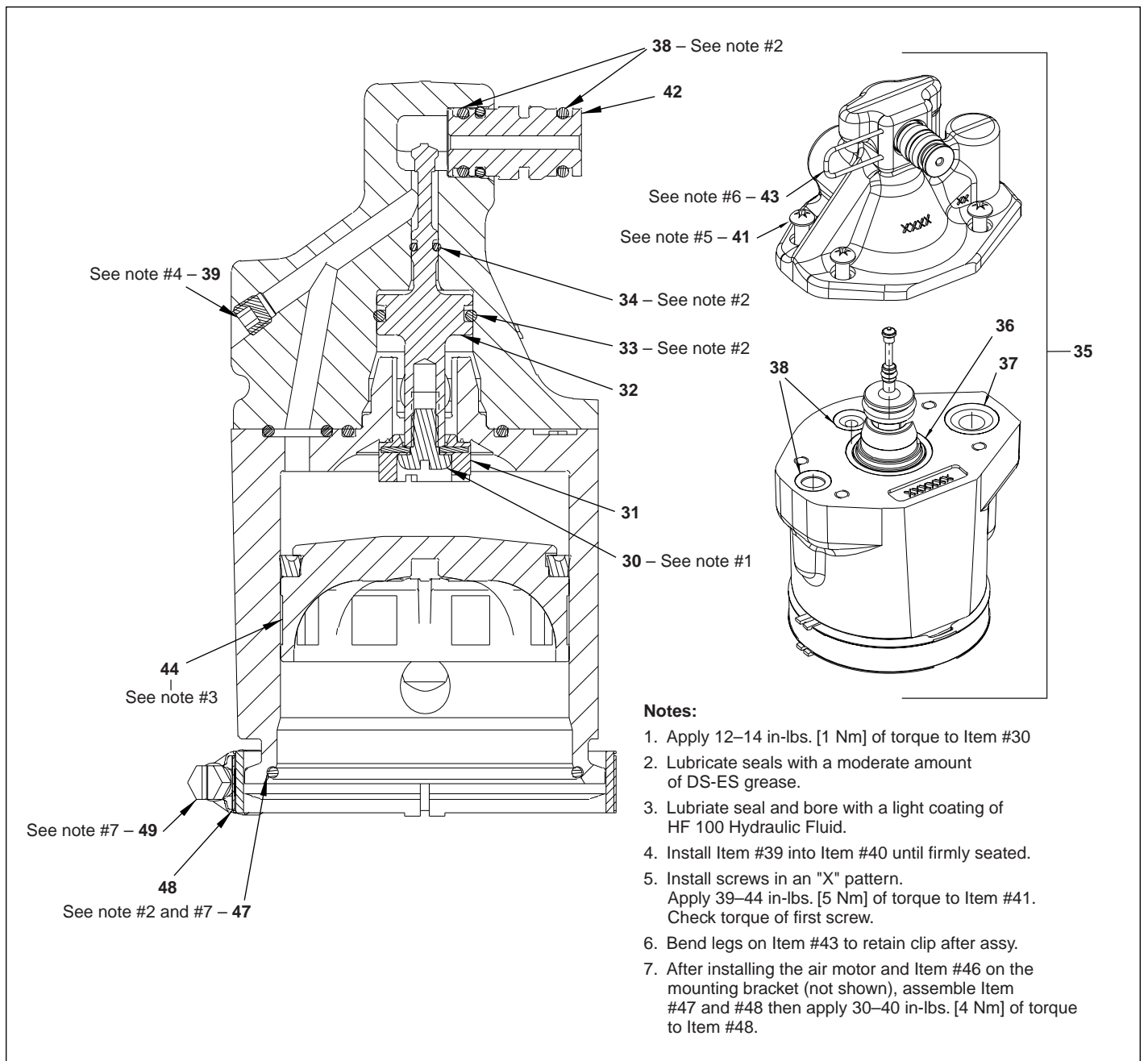


Figure 7

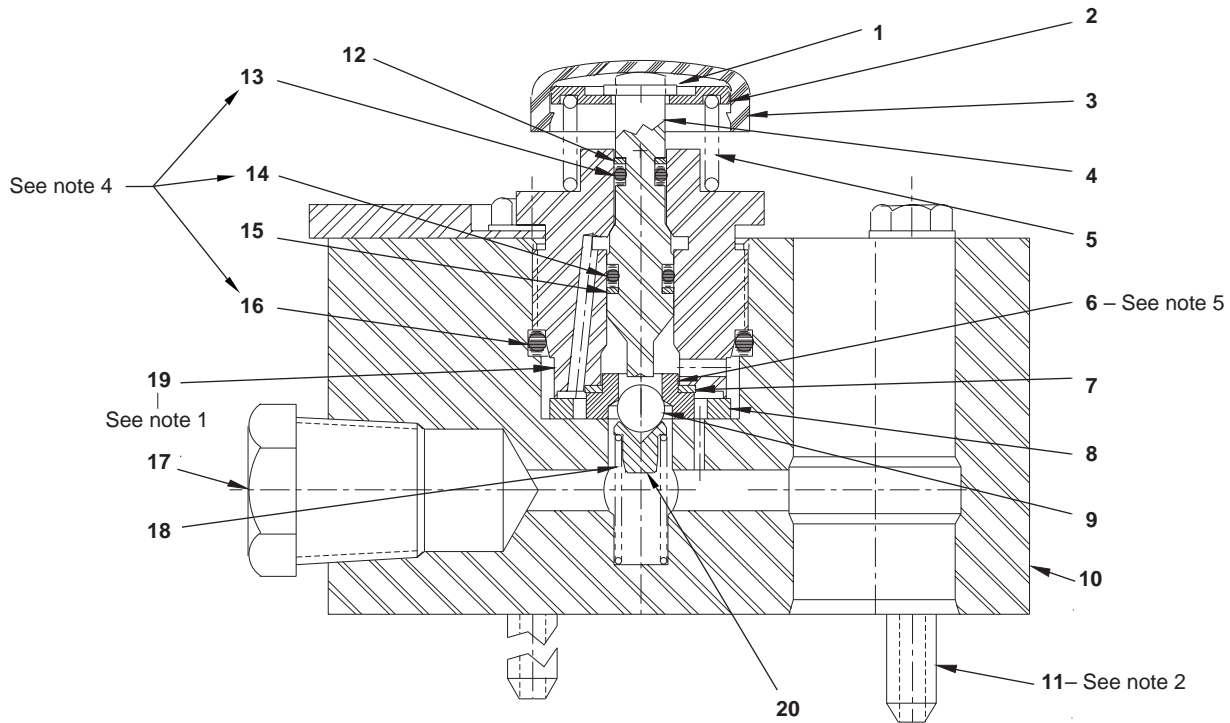
Repair Parts List for Figure 7							
Item	Part Number	Qty.	Description	Item	Part Number	Qty.	Description
30	DA7085028	1	Screw – .250-20 Special	39	A1006245	1	1/16 Flush Plug w/Sealant
31	★ DA3706120	1	B/U Washer	41	DC2261628	4	Screw, Torx (.25-20 x .75 lg.)
32	DC2234051SR	1	Piston (Includes #33, #34)	42	DC2182099	1	Extension Fitting, Air Motor
33	★ B1013503	1	O-Ring	43	★ DA5521149	1	Retaining Pin
34	★ B1001503	1	O-Ring (.12 x .25 x .06)	44	DA4122051SR	1	Air Motor Piston Assembly
35	DC2200900SR	1	Air Motor, Complete	47	★ B1282503	1	O-Ring
36	★ B1260503	1	O-Ring	48	DA2687111	2	Clamp Brk.
37	★ B1014503	1	O-Ring Ref M760041	49	DA2686299	1	Hose Clamp
38	★ B1009503	4	O-Ring Ref K1041				

★ Items included in and available only as part of Repair Kit DC2200900K. Also included in complete Pump Repair Kit, see Table 2 page 12.



**Notes:**

1. Torque Item #19 to 72–78 ft-lbs. [98-105 Nm] with threads lubricated
2. Torque Item #11 to 17–19 in-lbs. [2 Nm]
3. Lubricate all seals and mating surfaces w/DS-ES Grease prior to ass'y. unless otherwise noted.
4. Prior to assembling Item #6 seat, coin seat with a  $\varnothing$  .219 ball to a force of 95–105 lbs. [ 444 N]



**Figure 8**

**Repair Parts List for Figure 8**

Item	Part Number	Qty.	Description	Item	Part Number	Qty.	Description
1	★ DA5025349	1	Ret. Ring	11	DA4294028	4	Thd. Form Screw
2	DA4848108	1	Spring Washer	12	★ B1006564	1	B/U Washer
3	★ DA4831020	1	Cap	13	★ B1001503	1	O-Ring (.12 x .25 x .06)
4	DA4832040	1	Release Plunger	14	★ B1003503	1	O-Ring (.19 x .31 x .06) BUNA
5	★ DA6971110	1	Spring	15	★ B1008564	1	Back-up Washer
6	★ CB581290	1	Ball Seat	16	★ B1118903	1	O-Ring
7	★ P20037	1	Gasket	17	R515245-2	1	Plug
8	★ CL344167	1	Gasket	18	★ CJ656110	1	Spring
9	★ B1006016	1	7/32" Dia. Ball	19	DA4872013	1	Release Guide
10	DA4833190	1	Manifold	20	★ DA7572013	1	Ball Guide

★ Items included in and available only as part of Repair Kit DA4836900K1.  
Also included in complete Pump Repair Kit, see Table 2 page 12.

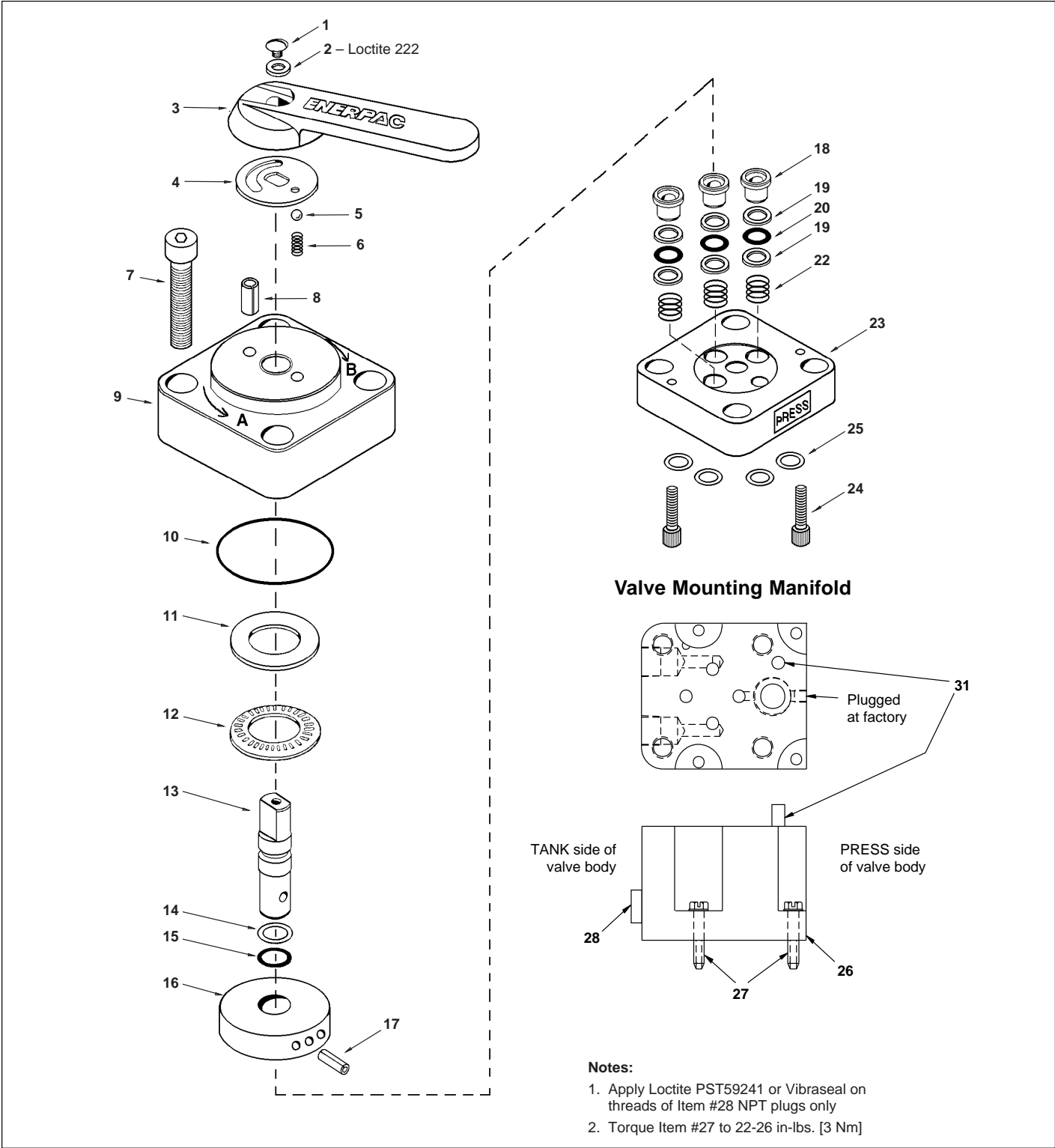


Figure 9

**IMPORTANT**

Do not attempt to repair the pump by substituting another valve. The 4-way manual valve used on Turbo II pumps is *not* interchangeable with a standard Enerpac VM-4 valve. Using a valve that is not designed for this mounting configuration may result in the reservoir becoming pressurized during operation.

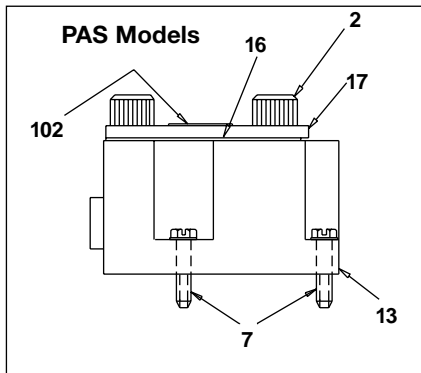
**For complete replacement valve, order:**  
DA5118900SR for NPT Ports  
DA9744900SR for BSPP Ports

**Repair Parts List for Figure 9**

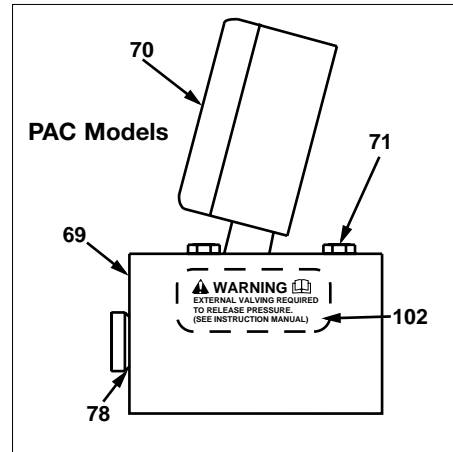
Item	Part Number	Qty.	Description	Item	Part Number	Qty.	Description
1	A8076048	1	Screw	17	B1109057	1	Roll Pin
2	B1086108	1	Washer	18	DA9560041	3	Shear Seal
3	Y325070	1	Handle	19	★B1011564	6	Back-Up Washer
4	A8005071	1	Disc	20	★B1006503	3	O-Ring
5	B1006016	1	7/32" Ball	22	★CB28110	3	Spring
6	★A8039110	1	Spring	23	CH539190	1	Body
7	B1389028	4	Bolt	24	B1326028	2	Bolt
8	B1126057	1	Roll Pin	25	★B1111803	4	O-Ring
9	CB324001	1	Valve Cap	26	DA5132840SR	1	Manifold - NPT Ports
10	★B1269503	1	O-Ring		DA9745840SR	1	Manifold - BSPP Ports
11	CB327101	1	Bearing Plate	27	DC1523028	4	Screw
12	CB328281	1	Bearing	28	CS235006	2	Plug - BSPP Ports
13	CH536104	1	Shaft		R515245-2	2	Plug - NPT Ports
14	★B1012564	1	Back-Up Washer	30	DA5579026	1	Decal VM4 (not shown)
15	★B1007503	1	O-Ring	31	B1051057	1	Pin
16	CH542950SR	1	Disc Assembly				

★ Indicates parts included in complete Pump Repair Kit, see Table 2 page 12.

**Pump Manifolds**



**Figure 10**



**Figure 11**

**Repair Parts List for Figure 10**

Item	Part Number	Qty.	Description	Item	Part Number	Qty.	Description
2	B1323028	4	SCHS SAE Manifolds	13	DA9259840SR	1	Manifold BSPP
	CBA515028-1A	4	SHCS BSPP Manifolds	16	★ DA9787037	1	Gasket
7	DC1523028	4	Screw	17	DA9788098	1	Cover
13	DC94840SR	1	Manifold SAE	102	DA9884026	4	Warning Decal

**Repair Parts List for Figure 11**

Item	Part Number	Qty.	Description	Item	Part Number	Qty.	Description
69	DA5307190	1	Valve Body - SAE Ports	71	DA4294028	4	Thread Forming Screw
	DA9747190	1	Valve Body - BSPP Ports	78	★ B1007503	1	O-Ring (SAE only)
70	G2517L	1	2.5" Gauge 0-6,000 psi	102	DA9554026	1	Warning Decal
	A1008245	1	Hex Plug (BSPP only)				

★ Items included in and available only as part of Repair Kit. See Table 2 page 12 for Repair Kit ordering information.

**Table 1 - Relief Valve Settings**

Pump Model	Pressure Rating	Relief Valve Pressure Setting
PA_G1_____	10,000 psi	10,400 to 11,000 psi
PA_G5_____	5,000 psi	5,200 to 5,700 psi
PA_G3_____	5,000 psi	5,200 to 5,700 psi

**For standard models with special pressure settings,**

the model number will have a "dash" followed by 4 more digits to indicate the pressure setting.

To determine the pressure settings locate the model number stamp. The model number will be in the format PYYYYYYY-XXXX, where XXXX is the maximum pressure rating. The relief valve should be set from (XXXX= 250 psi to (XXXX) + 750 psi).

**Table 2 - Repair Kit Application**

Pump Model	Recommended Repair Kit
PATG1_____	PATG1100K
PATG5_____	PATG5100K
PATG3_____	PATG3100K
PAMG1_____	PAMG1400K
PAMG5_____	PAMG5400K
PAMG3_____	PAMG3400K
PACG5_____, PASG5_____, and PARG5_____	PACG5000K
PACG3_____, PASG3_____, and PARG3_____	PACG3000K
PARG1_____	PARG1100K

**Enerpac Worldwide Locations**◆ e-mail: [info@enerpac.com](mailto:info@enerpac.com)◆ internet: [www.enerpac.com](http://www.enerpac.com)**Australia**

ENERPAC, Applied Power Australia Ltd.  
Block V Unit 3  
Regents Park Estate  
391 Park Road  
Regents Park NSW 2143  
(P.O. Box 261) Australia  
Tel: +61 297 438 988  
Fax: +61 297 438 648

**Canada**

Applied Power Canada Ltd.  
6615 Ordan Drive, Unit 14-15  
Mississauga, Ontario L5T 1X2  
Tel: +1 905 564 5749  
Fax: +1 905 564 0305

**Toll Free:**

Tel: +1 800 268 4987  
Fax: +1 800 461 2456

**China**

Applied Power China Ltd.  
1F, 269 Fute N. Road  
Waigaoqiao Free Trade Zone  
Pudong New District  
Shanghai, 200 131  
China  
Tel: +86 21 5866 9099  
Fax: +86 21 5866 7156

**France, Turkey, Greece, Africa, Middle East**

ENERPAC S.A.  
B.P. 200  
Parc d'Activités  
du Moulin de Massy  
F-91882 Massy CEDEX (Paris) France  
Tel: +33 1 601 368 68  
Fax: +33 1 692 037 50

**Germany, Switzerland, Austria, Eastern Europe**

ENERPAC  
Applied Power GmbH  
P.O. Box 300113  
D-40401 Düsseldorf  
Germany  
Tel: +49 211 471 490  
Fax: +49 211 471 49 28

**Hong Kong**

ENERPAC  
Room 907 Workingberg  
Commercial Building  
41-47 Marble Road  
North Point  
Tel: +852-2561 6295  
Fax: +852-2561 6772

**India**

ENERPAC  
Hydraulics (India) Pvt Ltd  
Plot No. A-571  
MIDC, TTC Industrial Area  
Mahape-400 701  
Navi Mumbai, India  
Tel: +91 22 769 47 78  
Fax: +91 22 769 84 73

**Italy**

ENERPAC  
Applied Power Italiana S.p.A.  
Via Canova 4  
20094 Corsico (Milano)  
Tel: +39 2 486 111 00  
Fax: +39 2 486 012 88

**Japan**

Applied Power Japan Ltd.  
1-1-11, Shimomae  
Toda-shi  
Saitama Pref.  
Japan 335-0016  
Tel: +81-48-430-2311  
Fax: +81-48-430-1117

**Mexico**

ENERPAC Applied Power  
Mexico S.A. de C.V.  
Avenida Principal  
La Paz #100  
Fracc. Industrial La Paz  
42092 Pachuca, Hidalgo  
Tel: +52 771 337 00  
Fax: +52 771 838 00

**The Netherlands, Belgium, Luxembourg, Sweden, Denmark, Norway, Finland**

ENERPAC B.V.  
Storkstraat 25  
P.O. Box 269, 3900 AG Veenendaal  
The Netherlands  
Tel: +31 318 535 911  
Fax: +31 318 525 613  
+31 318 535 848

**Singapore**

Applied Power Asia Pte Ltd  
No. 8, Ang Mo Kio,  
Industrial Park 2  
#01-00  
Singapore 569500  
Thomson Road  
P.O. Box 114  
Singapore 915704  
Tel: +65 484 5108  
Fax: +65 484 5669

**South Korea**

ENERPAC  
Applied Power Korea Ltd.  
163-12 Dodang-Dong  
Wonmi-Ku, Buchun-shi  
Kyunggi-Do  
Republic of Korea  
Tel: +82 32 675 08 36  
Fax: +82 32 675 30 02/73

**Spain, Portugal**

ENERPAC  
Applied Power International S.A.  
Avda. Camino de lo Cortao  
21 - Nave 3  
San Sebastian de los Reyes  
28709 Madrid  
Spain  
Tel: +34 91 661 11 25  
Fax: +34 91 661 47 89

**United Kingdom, Ireland**

ENERPAC Limited  
Unit 3, Colemeadow Road  
North Moons Moat  
Redditch  
Worcester B98 9BP  
United Kingdom  
Tel: +44 01527 598 900  
Fax: +44 01527 585 500

**USA, Latin America and Caribbean**

ENERPAC  
P.O. Box 3241  
6101 N. Baker Road  
Milwaukee, WI 53209 USA  
Tel: +1 262 781 6600  
Fax: +1 262 781 1049

**User inquiries:**

+1 800 433 2766

**Distributor inquiries/orders:**

+1 800 558 0530

All Enerpac products are guaranteed against defects in workmanship and materials for as long as you own them.

For your nearest authorized Enerpac Service Center, visit us at [www.enerpac.com](http://www.enerpac.com)