

Turbo Air Button Replacement

L2567 Rev. O 09/02

1.0 TREADLE DISASSEMBLY

1.1 Treadle Removal

T Versions

1. Remove two shoulder bolts and remove treadle ($\frac{3}{16}$ " allen wrench required).

M, C, S Versions

1. Remove retaining ring and hinge pin on treadle.

1.2 Reservoir Removal

1. Remove reservoir cover and gasket by removing twelve screws, using a $\frac{1}{4}$ " nut driver. Set reservoir and gasket off to the side.

1.3 Retaining Pin Removal

1. Remove retaining pin (item A in Illustration 1) by bending the arms of the pin straight using a needle nose pliers.

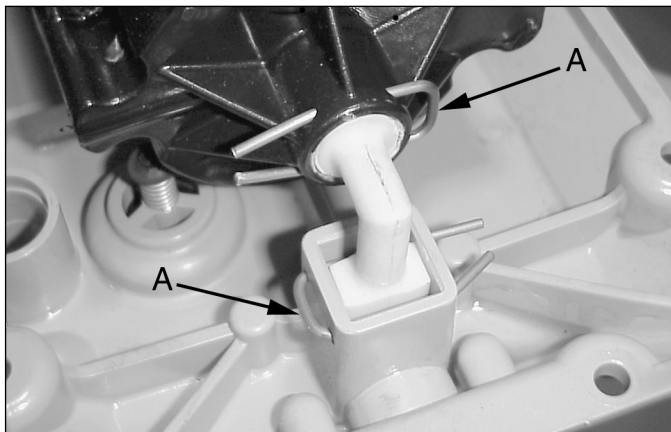


Illustration 1

A. Retaining pins

1.4 Mounting Bracket Screws Removal

1. Remove four mounting bracket screws (item A, Illustration 2).

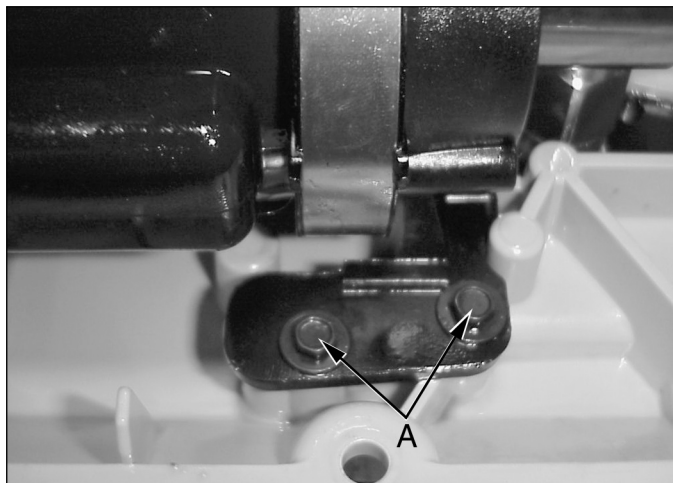


Illustration 2

A. Mounting bracket screws

1.5 Securing Cover Assembly /Removing Hydraulic Section, see Illustration 3

1. Secure cover assembly in a vise vertically by clamping on the sides of the valve block.
2. Remove plastic plug from top of valve block.
3. Using a soft hammer and brass drift, tap on the pressure tube. **NOTE:** the pressure tube slides into the valve block and has a tight o-ring fit.
4. While tapping the pressure tube, secure the air pump assembly to prevent damage from being dropped.

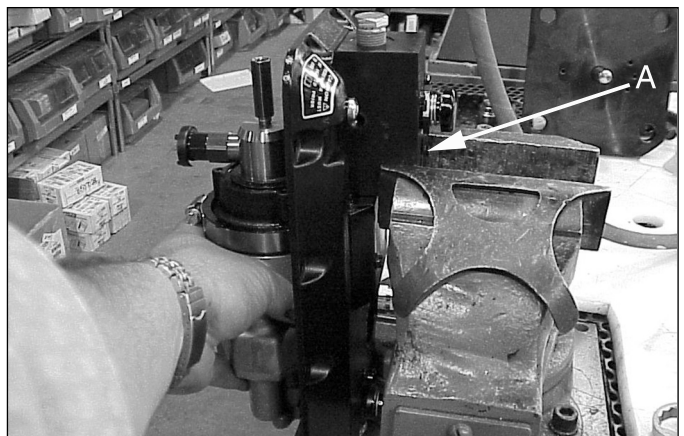


Illustration 3

A. High-pressure tube access hole

1.6 Air Button Assembly Removal

1. Secure raised area, around the air button, of cover plate in jaws of the vise (just enough to grip it), see Illustration 4.

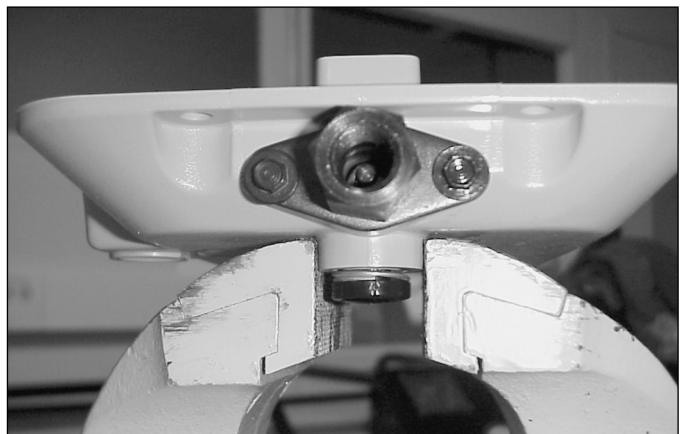


Illustration 4

2. Use a $\frac{5}{64}$ " straight punch and locate the point of the punch in the center hole of the air button assembly, see Illustration 5.
3. Using the soft hammer tap down on the air button, until it comes out, see Illustration 5.

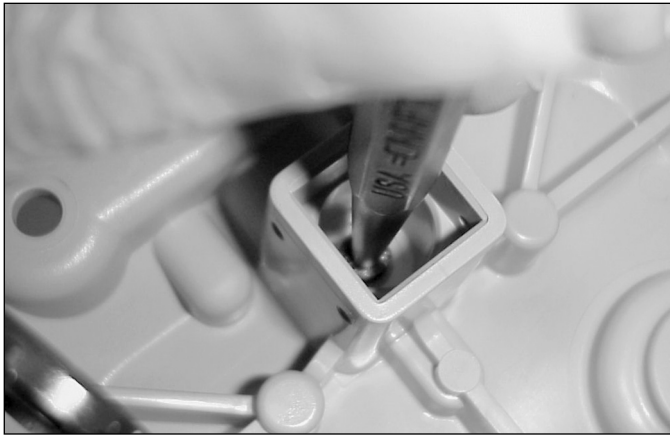


Illustration 5

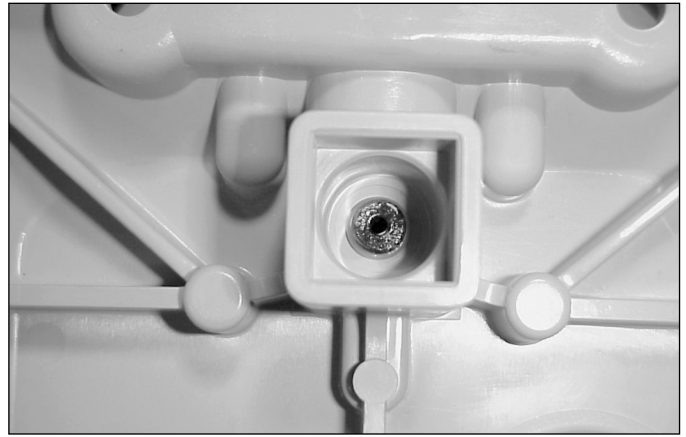


Illustration 7

2.0 INSPECTION

1. Check for cracks or any damage in the bore and seal areas of the air button seat.
2. If there is any damage the cover will need to be replaced.
3. If everything looks good continue on with the next step.

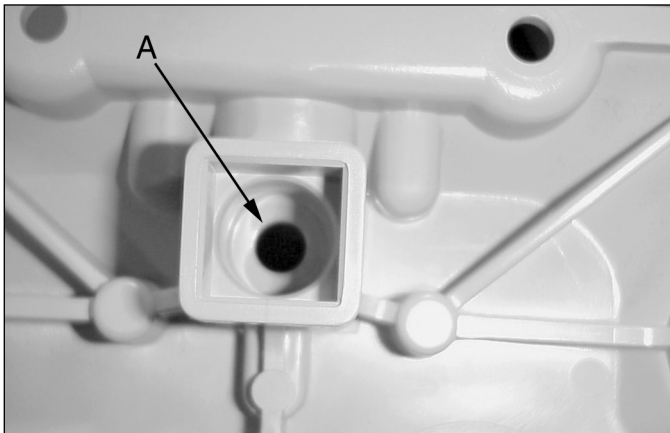


Illustration 6

A. Air button seat

3.0 ASSEMBLY

3.1 Applying Grease to Air Button Seal

NOTE: Use only new parts supplied in Repair Kit.

1. Lubricate air button seals with DS-ES grease.
2. Position spring from air button assembly in groove on topside of cover.
3. Place air button assembly in the bore from which it was removed.
4. Using palm of your hand push air button assembly into the bore until the o-ring has gone through.
5. Visually inspect air button assembly in cover making sure the o-ring was not cut upon assembly.

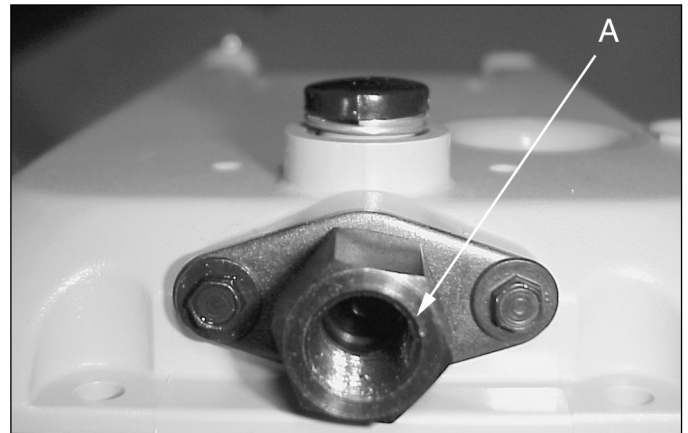


Illustration 8

A. Swivel fitting

3.2 Testing Air Button for Leaks

1. Connect an air supply to the swivel fitting.
2. Turn on the air supply and check for any air leakage. If an air leak occurs the cover will need to be replaced, the bore or seat is beyond repair. If no air leakage occurs turn the air off.
3. With the air off press down on the air button to release any air that might be in the system.
4. Apply air to the assembly again to check for air leaks. If no leak occurs continue assembling the air motor to the cover.

3.3 Pump Cover Assembly, see Illustration 10

1. Mount cover assembly in soft jaw vise by clamping on the release valve block.
2. Place pump assembly on top aligning the pressure tube and extension tube with the holes on the cover.
3. With a soft blow hammer tap on the intake check until the pump assembly is firmly mounted on the cover.
4. Using four mounting screws mount the bracket to the cover assembly.
5. Using new retaining pin mount the air motor to the cover assembly. Use a needle nose pliers to bend the clip ends.

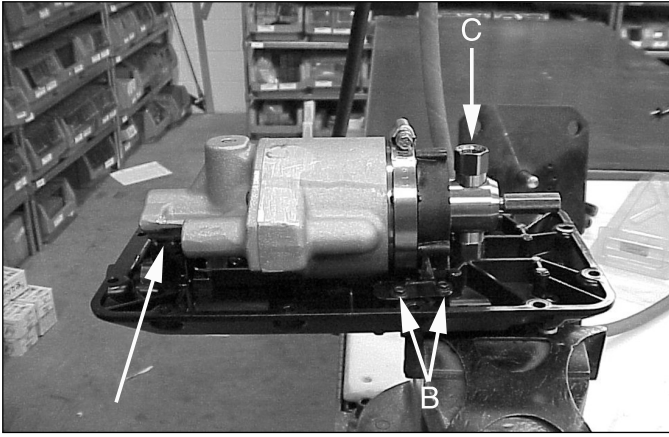


Illustration 9

- A. Retaining pin
- B. Mounting screws
- C. Intake seat

3.4 Reservoir Installation

1. Place gasket on reservoir. Position large notch in gasket opposite sight glass and align with the fill port.
2. Position cover assembly on the reservoir in such a way that the air inlet end of the cover is opposite the sight glass end of the reservoir.
3. Using twelve screws fasten cover assembly to the reservoir. First snug all screws, then move around the cover according to tightening sequence. See Illustration 10.

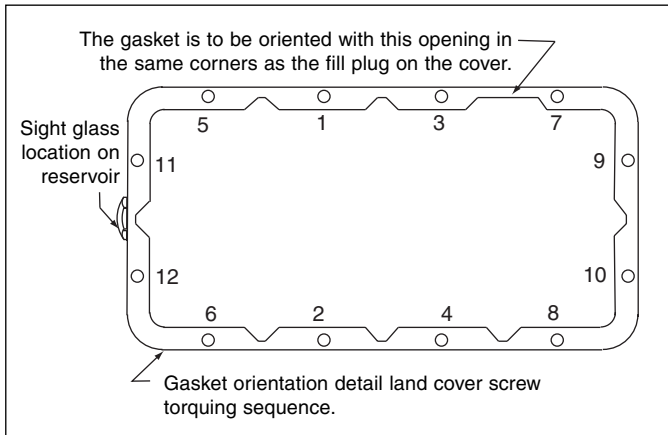


Illustration 10

3.4 Treadle Installation

1. Install treadle to pump using two shoulder bolts.
2. Torque shoulder bolts to 6-8 ft. lbs.

4.0 TESTING

1. Fill reservoir with fresh Enerpac hydraulic oil.
2. Connect pump to gauge and 10-ton cylinder.
3. Extend cylinder several times to remove air from the system.
4. Test pressure outputs and flow according to pump specs.

Enerpac Worldwide Locations

Australia

ENERPAC, Applied Power Australia Ltd.
Block V Unit 3
Regents Park Estate
391 Park Road
Regents Park NSW 2143
(P.O. Box 261) Australia
Tel: +61 297 438 988
Fax: +61 297 438 648

Brazil

Power Packer do Brasil Ltda.
Rua dos Inocentes, 587
04764-050 - Sao Paulo (SP)
Tel: +55 11 5687 2211
Fax: +55 11 5686 5583
Toll Free in Brazil:
Tel: 000 817 200 3949
vendasbrasil@enerpac.com

Canada

Actuant Canada Corporation
6615 Ordan Drive, Unit 14-15
Mississauga, Ontario L5T 1X2
Tel: +1 905 564 5749
Fax: +1 905 564 0305
Toll Free:
Tel: +1 800 268 4987
Fax: +1 800 461 2456
Technical Inquiries:
techservices@enerpac.com

China

Actuant China Ltd.
1F, 269 Fute N. Road
Waigaoqiao Free Trade Zone
Pudong New District
Shanghai, 200 131, China
Tel: +86 21 5866 9099
Fax: +86 21 5866 7156

China, cont.

Actuant China Ltd. (Beijing)
709A Xin No. 2
Diyang Building
Dong San Huan North Rd.
Beijing City, 100028, China
Tel: +86 10 845 36166
Fax: +86 10 845 36220

France, Turkey, Greece, Africa, Middle East

ENERPAC S.A.
B.P. 200
Parc d'Activités
du Moulin de Massy
F-91882 Massy CEDEX (Paris) France
Tel: +33 1 601 368 68
Fax: +33 1 692 037 50

Germany, Switzerland, Austria, Eastern Europe

ENERPAC
Applied Power GmbH
P.O. Box 300113
D-40401 Düsseldorf, Germany
Tel: +49 211 471 490
Fax: +49 211 471 49 28

India

ENERPAC Hydraulics (India) Pvt. Ltd.
Plot No. A/571
MIDC, TTC Industrial Area
Mahape-400 701
Navi Mumbai, India
Tel: +91 22 778 1779
Fax: +91 22 778 1473

Italy

ENERPAC
Applied Power Italiana S.p.A.
Via Canova 4
20094 Corsico (Milano)
Tel: +39 02 4861 111
Fax: +39 02 4860 1288

◆ **e-mail:** info@enerpac.com

Japan

Applied Power Japan Ltd.
1-1-11, Shimomae
Toda-shi, Saitama Pref.
Japan 335-0016
Tel: +81 48 430 2311
Fax: +81 48 430 1117

Mexico

ENERPAC Applied Power
Mexico S. de R.L. de C.V.
Avenida Principal, La Paz #100
Fracc. Industrial La Paz
42092 Pachuca, Hidalgo
Tel: +52 771 71 33700
Fax: +52 771 71 35232
Toll Free in Mexico:
Tel: 001 800 590 0130

The Netherlands, Belgium, Luxembourg, Sweden, Denmark, Norway, Finland, United Kingdom, Ireland

ENERPAC B.V.
Storkstraat 25
P.O. Box 269, 3900 AG Veenendaal
The Netherlands
Tel: +31 318 535 911
Fax: +31 318 525 613
+31 318 535 848
UK, Ireland
Tel: +44 01527 598 900
Fax: +44 01527 585 500

Singapore

Actuant Asia Pte. Ltd.
25 Serangoon North Ave. 5
#03-01 Keppel Digihub
Singapore 554914
Thomson Road
P.O. Box 114
Singapore 915704
Tel: +65 6484 5108
Fax: +65 6484 5669

◆ **internet:** www.enerpac.com

South Korea

ENERPAC
Applied Power Korea Ltd.
163-12 Dodang-Dong
Wonmi-Ku, Buchun-shi
Kyunggi-Do
Republic of Korea
Tel: +82 32 675 08 36
Fax: +82 32 675 30 02/73

Spain, Portugal

ENERPAC
Applied Power International S.A.
Avda. Camino de lo Cortao
21 - Nave 3
San Sebastian de los Reyes
28709 Madrid
Spain
Tel: +34 91 661 11 25
Fax: +34 91 661 47 89

USA, Latin America and Caribbean

ENERPAC
P.O. Box 3241
6100 N. Baker Road
Milwaukee, WI 53209 USA
Tel: +1 262 781 6600
Fax: +1 262 783 9562

User inquiries:

+1 800 433 2766

Distributor inquiries/orders:

+1 800 558 0530

Technical Inquiries:

techservices@enerpac.com

**All Enerpac products are guaranteed against defects in workmanship and materials for as long as you own them.
For your nearest authorized Enerpac Service Center, visit us at www.enerpac.com**