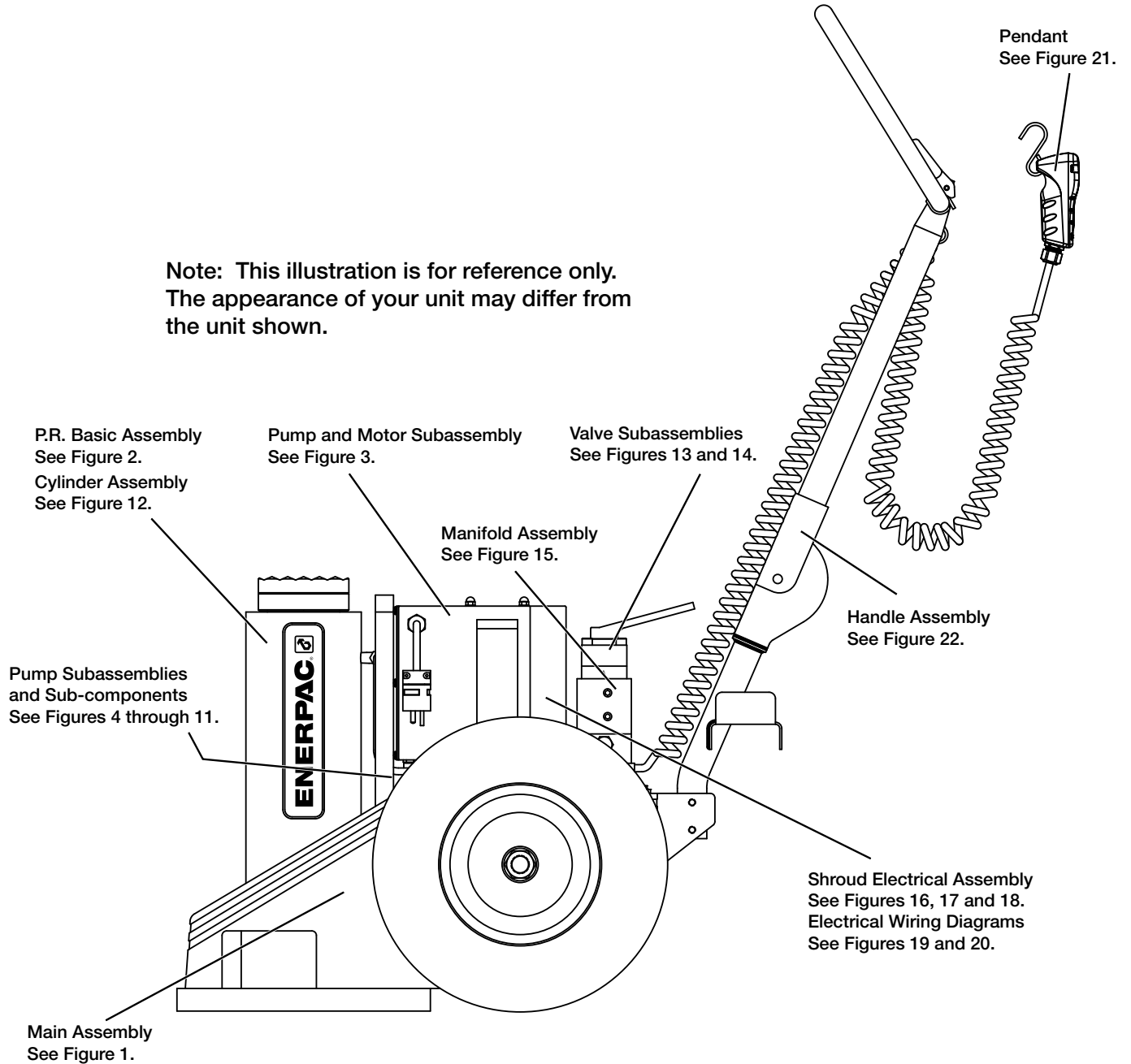


**To Protect Your Warranty, Use Only ENERPAC Hydraulic Oil.**

Enerpac recommends that all kit components be installed to insure optimum performance of the repaired product.

Note: This illustration is for reference only.  
The appearance of your unit may differ from  
the unit shown.

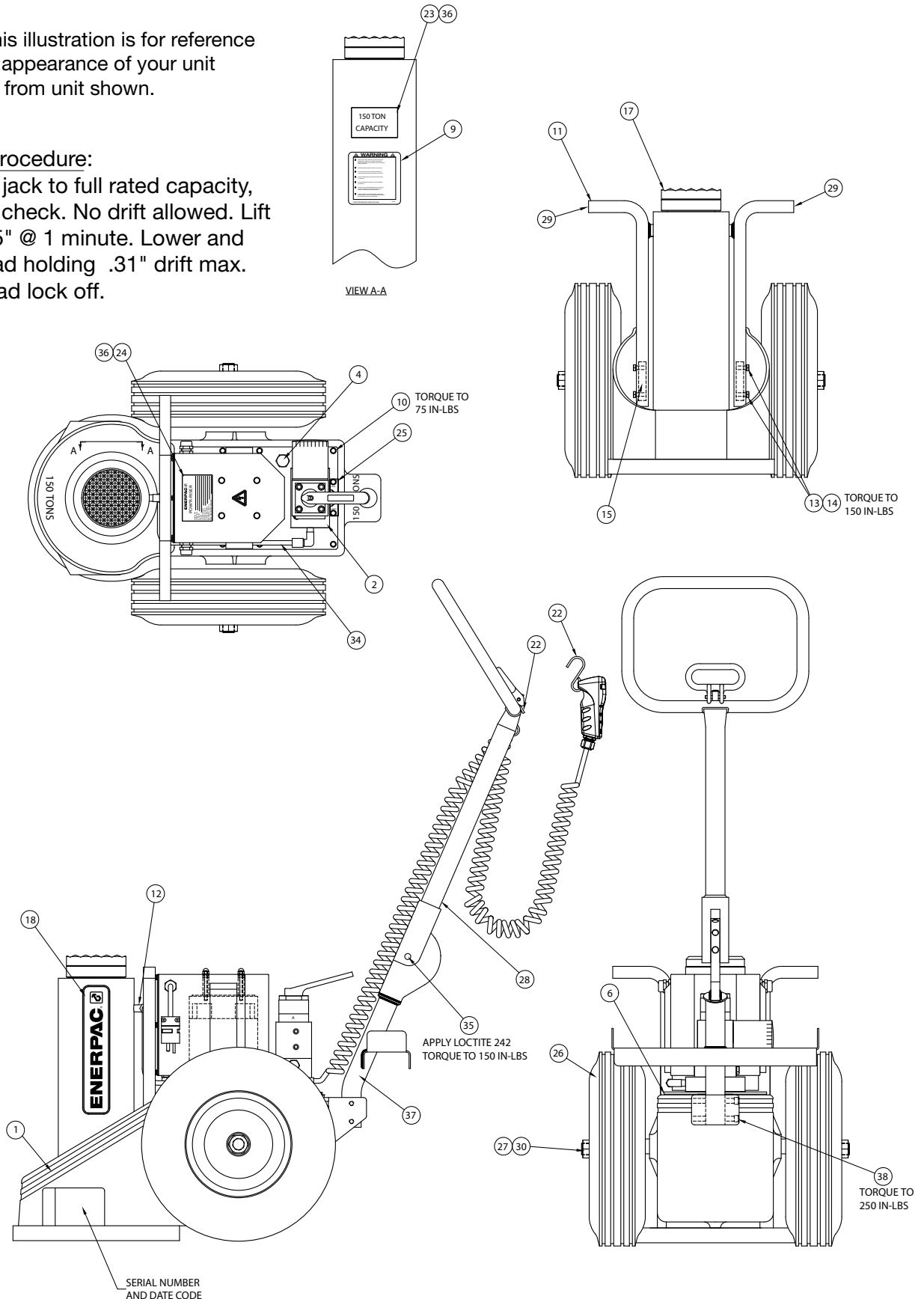


**Figure 1 - Main Assembly**

NOTE: This illustration is for reference only. The appearance of your unit may differ from unit shown.

**Testing Procedure:**

Load the jack to full rated capacity, hold and check. No drift allowed. Lift 1.75-1.25" @ 1 minute. Lower and check load holding .31" drift max. before load lock off.

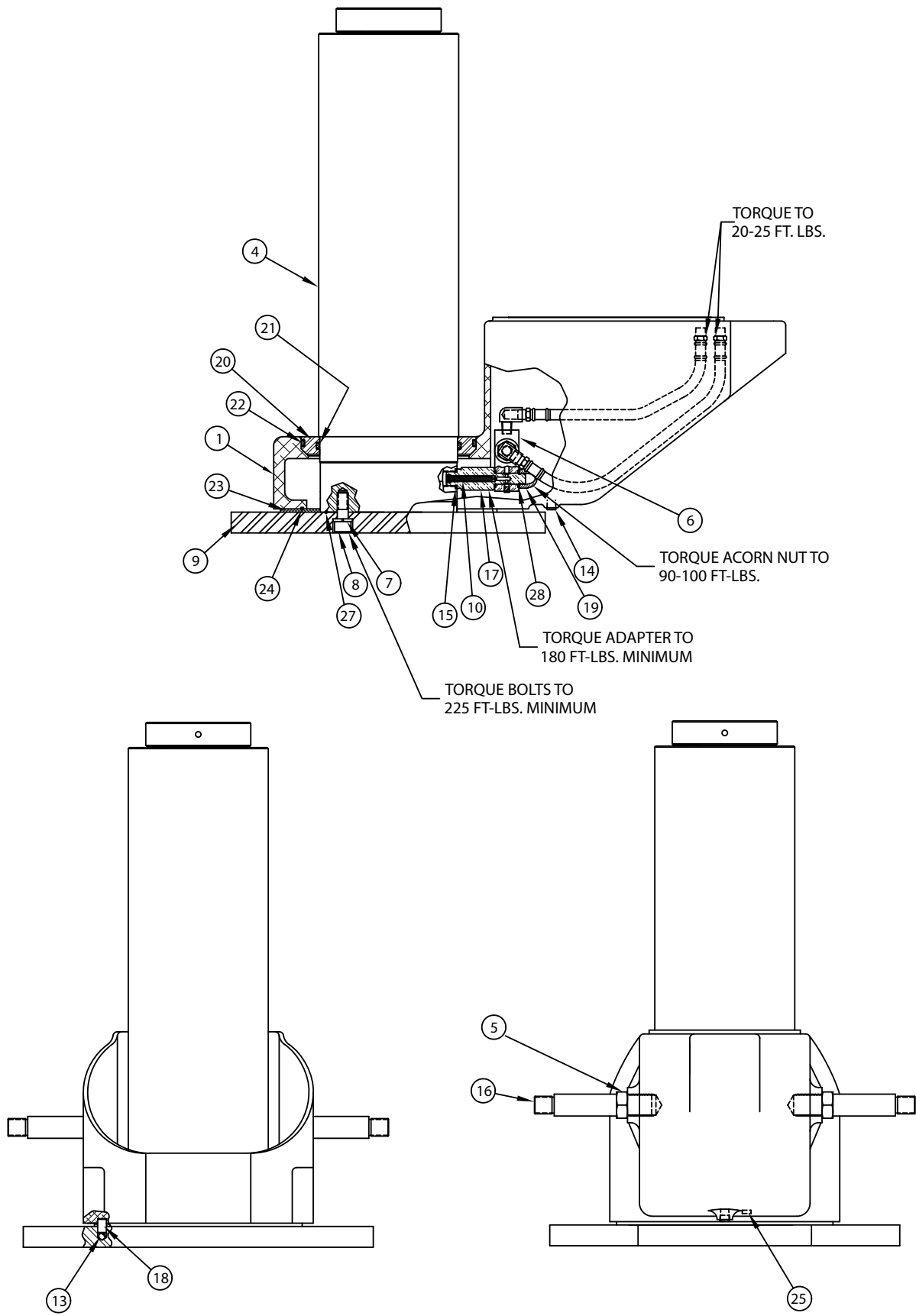


**Repair Parts List (Refer to figure 1)**

| Item | Model                   |                         |                         |                         |                         |                         | Qty. | Description                                   |
|------|-------------------------|-------------------------|-------------------------|-------------------------|-------------------------|-------------------------|------|---|
|      | PREMB15016L<br>115 Volt | PREMB15027L<br>115 Volt | PREMI15016L<br>230 Volt | PREMI15027L<br>230 Volt | PREME15016L<br>230 Volt | PREME15027L<br>230 Volt |      |   |
| 1    | 42045SR                 | 41943SR                 | 42045SR                 | 41943SR                 | 42045SR                 | 41943SR                 | 1    | PR Basic Asm<br>(See Fig 2)                   |
| 2    | DS1070900SR             | DS1070900SR             | DS1073900SR             | DS1073900SR             | DS1176900SR             | DS1176900SR             | 1    | Subassembly, Pump<br>and Motor (see Figure 3) |
| 4    | 88743E                  | 88743E                  | 88743E                  | 88743E                  | 88743E                  | 88743E                  | 1    | Plug Hex O-Ring                               |
| 6    | 85469E                  | 85469E                  | 85469E                  | 85469E                  | 85469E                  | 85469E                  | 1    | Gasket  |
| 9    | 89292E                  | 89292E                  | 89292E                  | 89292E                  | 89292E                  | 89292E                  | 1    | Decal, Warning PWR R                          |
| 10   | B2005046E               | B2005046E               | B2005046E               | B2005046E               | B2005046E               | B2005046E               | 14   | Screw 1/4-20 x 3/4" St                        |
| 11   | 42358E                  | N/A                     | 42358E                  | N/A                     | 42358E                  | N/A                     | 1    | Lifting Bar 24" PR                            |
| 12   | 40085E                  | 40085E                  | 40085E                  | 40085E                  | 40085E                  | 40085E                  | 1    | Male Elbow 3/8-3/8"                           |
| 13   | 42363E                  | N/A                     | 42363E                  | N/A                     | 42363E                  | N/A                     | 4    | HCS 5/16-18 x 1.25" Plt.                      |
| 14   | 93942E                  | N/A                     | 93942E                  | N/A                     | 93942E                  | N/A                     | 4    | Lock Washer 5/16"                             |
| 15   | 42365E                  | N/A                     | 42365E                  | N/A                     | 42365E                  | N/A                     | 2    | Nut Plt - Lift Bar                            |
| 17   | 42208E                  | 42208E                  | 42208E                  | 42208E                  | 42208E                  | 42208E                  | 1    | Load Cap PR Long Stm                          |
| 18   | 89967E                  | 89967E                  | 89967E                  | 89967E                  | 89967E                  | 89967E                  | 1    | Enerpac Logo - Large                          |
| 22   | 42367E                  | 42367E                  | 42367E                  | 42367E                  | 42367E                  | 42367E                  | 2    | S-Hook, Pendant                               |
| 23   | 42532E                  | 42532E                  | 42532E                  | 42532E                  | 42532E                  | 42532E                  | 1    | Label 150 Ton Capacity                        |
| 24   | 42434E                  | 42436E                  | 46451E                  | 45673E                  | DS1181026               | DS1182026               | 1    | Model Label                                   |
| 25   | 86027E                  | 86027E                  | 86027E                  | 86027E                  | 86027E                  | 86027E                  | 1    | Control Valve Plate                           |
| 26   | 41944E                  | 41944E                  | 41944E                  | 41944E                  | 41944E                  | 41944E                  | 2    | Tire/Rim Assembly                             |
| 27   | 41945E                  | 41945E                  | 41945E                  | 41945E                  | 41945E                  | 41945E                  | 2    | Spacer  |
| 28   | 41961SR                 | 41961SR                 | 41961SR                 | 41961SR                 | 41961SR                 | 41961SR                 | 1    | Handle Assembly                               |
| 29   | 43021E                  | N/A                     | 43021E                  | N/A                     | 43021E                  | N/A                     | 2    | Square Hole Plug PR                           |
| 30   | 46053E                  | 46053E                  | 46053E                  | 46053E                  | 46053E                  | 46053E                  | 2    | 1"-8 Hex Lock Nut                             |
| 34   | 41977E                  | 41978E                  | 41977E                  | 41978E                  | 41977E                  | 41978E                  | 1    | Tube  |
| 35   | 41983E                  | 41983E                  | 41983E                  | 41983E                  | 41983E                  | 41983E                  | 1    | Screw Shoulder                                |
| 36   | 46539E                  | 46539E                  | 46539E                  | 46539E                  | 46539E                  | 46539E                  | 1    | Decal Overlay                                 |
| 37   | 42281E                  | 42281E                  | 42281E                  | 42281E                  | 42281E                  | 42281E                  | 1    | Lower Weldment 5" PR                          |
| 38   | 84692E                  | 84692E                  | 84692E                  | 84692E                  | 84692E                  | 84692E                  | 2    | SHC 3/8-16 x 1.75"                            |

N/A = Not Available.

Figure 2 - 42045SR, 41943SR Pow'r Riser Basic Assembly

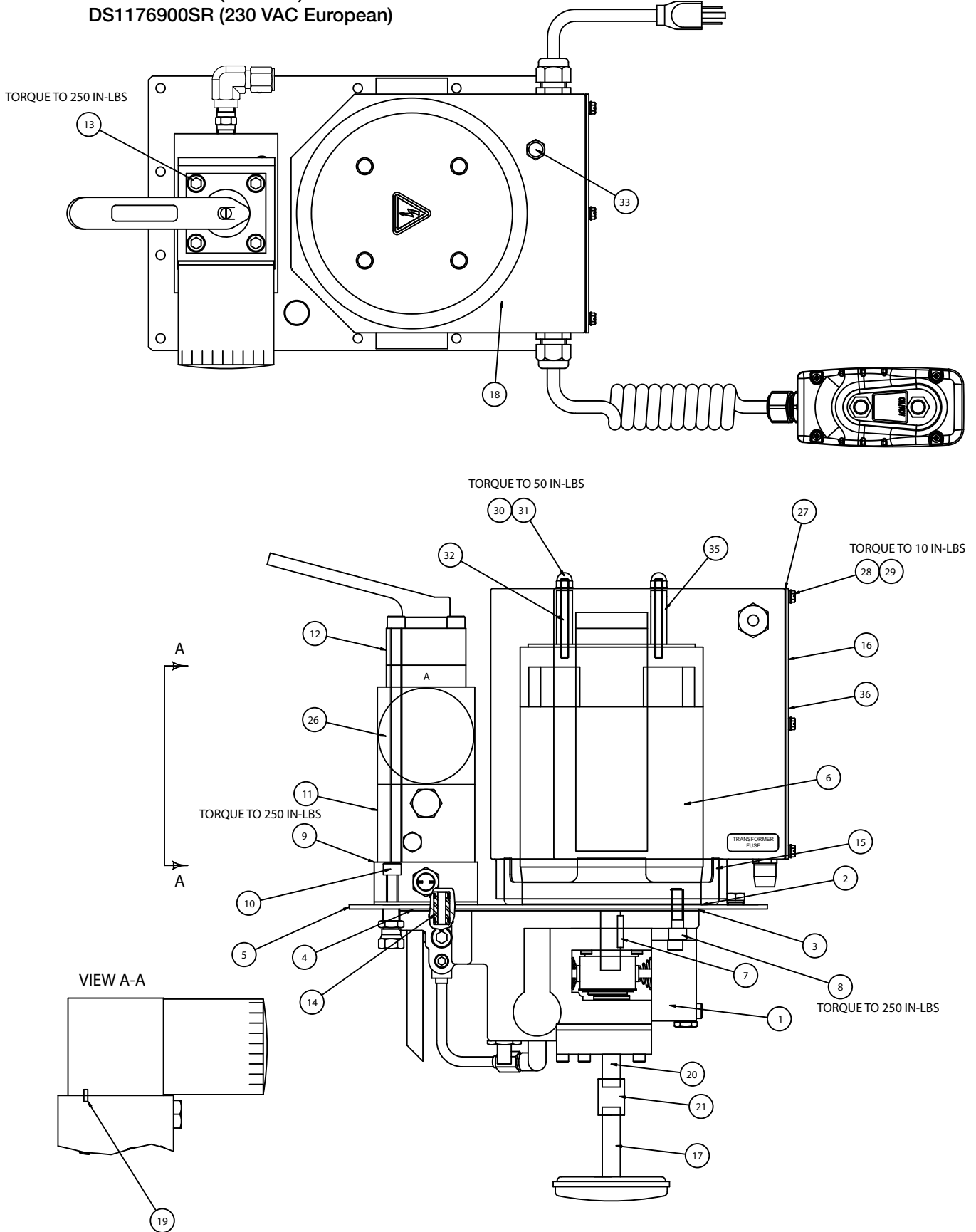


**Repair Parts List (Refer to figure 2)**

| Item              | Model                   |                         |                         |                         |                         |                         | Qty. | Description            |
|-------------------|-------------------------|-------------------------|-------------------------|-------------------------|-------------------------|-------------------------|------|------------------------|
|                   | PREMB15016L<br>115 Volt | PREMB15027L<br>115 Volt | PREMI15016L<br>230 Volt | PREMI15027L<br>230 Volt | PREME15016L<br>230 Volt | PREME15027L<br>230 Volt |      |                        |
| <b>BASIC ASSY</b> | <b>42045SR</b>          | <b>41943SR</b>          | <b>42045SR</b>          | <b>41943SR</b>          | <b>42045SR</b>          | <b>41943SR</b>          |      |                        |
| 1                 | 41886E                  | 41886E                  | 41886E                  | 41886E                  | 41886E                  | 41886E                  | 1    | Housing Mach P. R.     |
| 4                 | S42050SR                | 41926SR                 | S42050SR                | 41926SR                 | S42050SR                | 41926SR                 | 1    | 150 Ton Cylinder Assy. |
| 5                 | 85477E                  | 85477E                  | 85477E                  | 85477E                  | 85477E                  | 85477E                  | 2    | Jam Nut                |
| 6                 | (See Fig. 12)           |                         |                         |                         |                         |                         | 1    | O.C. Valve and Hoses   |
| 7                 | 93947E                  | 93947E                  | 93947E                  | 93947E                  | 93947E                  | 93947E                  | 6    | Lock Washer 5/8"       |
| 8                 | 93605E                  | 93605E                  | 93605E                  | 93605E                  | 93605E                  | 93605E                  | 6    | SHCS 5/8-11 x 1.5" Lg. |
| 9                 | 41975E                  | 41975E                  | 41975E                  | 41975E                  | 41975E                  | 41975E                  | 1    | 150 Ton P.R. Base      |
| 10                | 89754E                  | 89754E                  | 89754E                  | 89754E                  | 89754E                  | 89754E                  | 1    | Screen - 2" Nipple     |
| 13                | 44968E                  | 44968E                  | 44968E                  | 44968E                  | 44968E                  | 44968E                  | 2    | Rubber Ball 3/8" 70    |
| 14                | 93950E                  | 93950E                  | 93950E                  | 93950E                  | 93950E                  | 93950E                  | 1    | 1/4" Soc Pipe Plug     |
| 15                | ◆                       | ◆                       | ◆                       | ◆                       | ◆                       | ◆                       | 1    | Gasket Adapter         |
| 16                | 41948E                  | 41948E                  | 41948E                  | 41948E                  | 41948E                  | 41948E                  | 2    | Axle Shaft             |
| 17                | 41947E                  | 41947E                  | 41947E                  | 41947E                  | 41947E                  | 41947E                  | 1    | Adapter O.C. Valve     |
| 18                | 42275E                  | 42275E                  | 42275E                  | 42275E                  | 42275E                  | 42275E                  | 2    | PR Base Pin            |
| 19                | 46740E                  | 46740E                  | 46740E                  | 46740E                  | 46740E                  | 46740E                  | 1    | Acorn Nut 5/8-11       |
| 20                | 41974E                  | 41974E                  | 41974E                  | 41974E                  | 41974E                  | 41974E                  | 1    | Ring 150 Ton           |
| 21                | ◆                       | ◆                       | ◆                       | ◆                       | ◆                       | ◆                       | 1    | O-Ring 6-3/4 x 7-1/4"  |
| 22                | ◆                       | ◆                       | ◆                       | ◆                       | ◆                       | ◆                       | 1    | O-Ring 9" x 9-1/2"     |
| 23                | ◆                       | ◆                       | ◆                       | ◆                       | ◆                       | ◆                       | 1    | Gasket Base            |
| 24                | ◆                       | ◆                       | ◆                       | ◆                       | ◆                       | ◆                       | 1    | O-Ring Power Riser     |
| 25                | 66021E                  | 66021E                  | 66021E                  | 66021E                  | 66021E                  | 66021E                  | 1    | Magnet                 |
| 27                | ◆                       | ◆                       | ◆                       | ◆                       | ◆                       | ◆                       | 1    | O-Ring 6" x 6-1/4"     |
| 28                | 68183E                  | 68183E                  | 68183E                  | 68183E                  | 68183E                  | 68183E                  | 1    | Gasket Plug            |

◆ Included in 54411K Repair Kit.

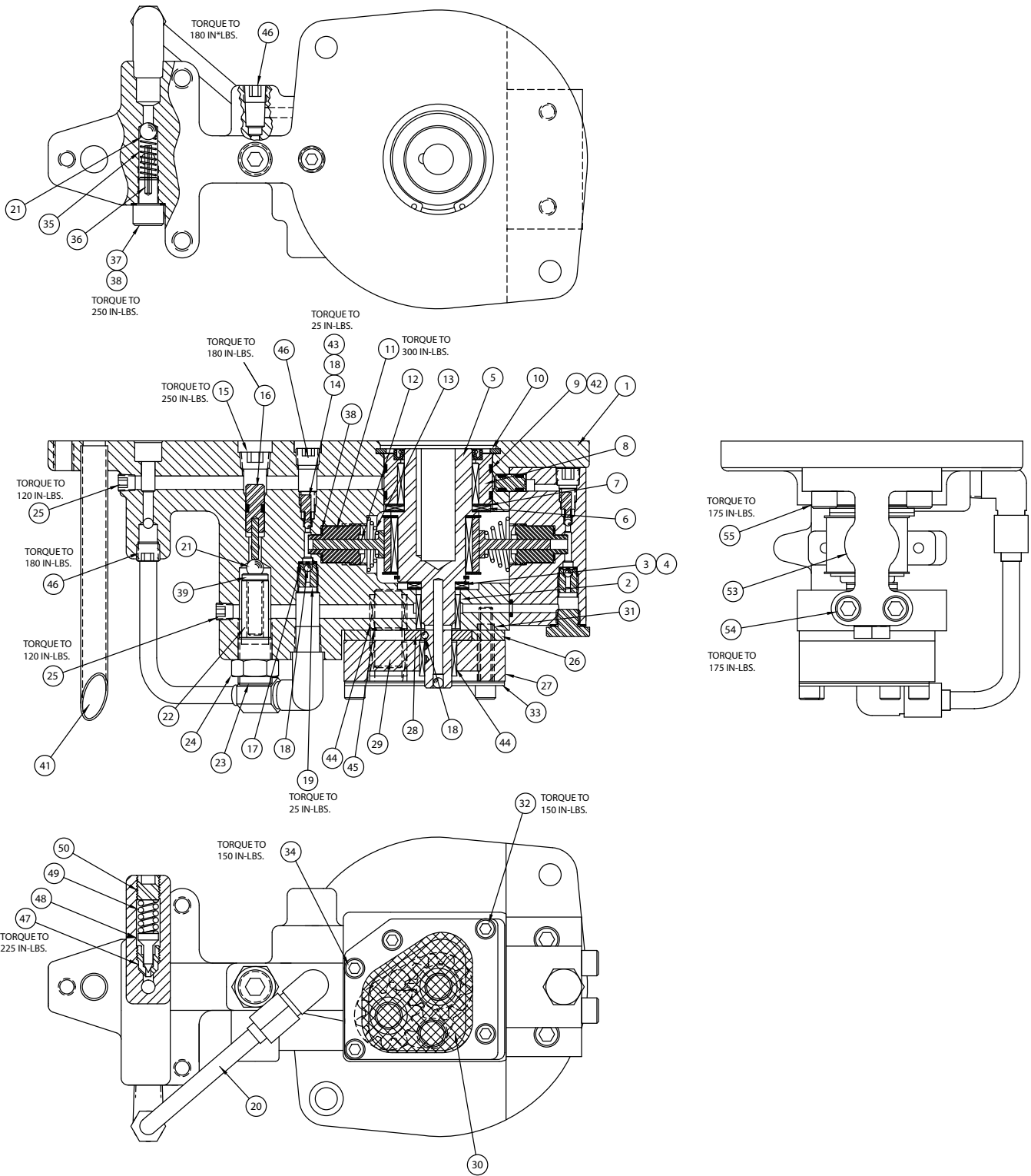
Figure 3 - Pump and Motor Sub-Assembly  
 DS1070900SR (115 VAC)  
 DS1073900SR (230 VAC)  
 DS1176900SR (230 VAC European)



| Repair Parts List (Refer to figure 3) |  |  |  |      |                             |
|---------------------------------------|--|--|--|------|-----------------------------|
| Item                                  | Part Number                                      |  |  | Qty. | Description                 |
|                                       | Pump and Motor Assy.<br>DS1070900SR<br>(115 VAC) | Pump and Motor Assy.<br>DS1073900SR<br>(230 VAC) | Pump and Motor Assy.<br>DS1176900SR<br>(230 VAC) |      |                             |
| 1                                     | (See Fig. 4)                                     |  |  | 1    | Pump Asm 2P 1.5 HP.         |
| 2                                     | ★ 66012E   | ★ 66012E   | ★ 66012E   | 1    | Gasket-Motor                |
| 3                                     | ★ 68231E   | ★ 68231E   | ★ 68231E   | 1    | Gasket-Pump @ Motor         |
| 4                                     | ★ 68551E   | ★ 68551E   | ★ 68551E   | 1    | Gasket-Pump @ Valve         |
| 5                                     | 42254E   | 42254E   | 42254E   | 1    | PR Cover Plate              |
| 6                                     | 68376E   | ---  | ---  | 1    | Electric Motor, 1.5 HP 115V |
|                                       | ---  | 68403E   | 68403E   | 1    | Electric Motor, 1.5 HP 230V |
| 7                                     | 69026E   | 69026E   | 69026E   | 1    | Pin Dowel 3/16-1            |
| 8                                     | 93596E   | 93596E   | 93596E   | 2    | SHCS 3/8-16 x 1-1/4"        |
| 9                                     | (See Fig. 15)                                    |  |  | 1    | Manifold Asm NPR            |
| 10                                    | 86184E   | 86184E   | 86184E   | 3    | SHCS 3/8-16 x 1-1/2"        |
| 11                                    | (See Fig. 14)                                    |  |  | 1    | Locking Valve w/relief      |
| 12                                    | (See Fig. 13)                                    |  |  | 1    | Control Valve Asm.          |
| 13                                    | 42383E   | 42383E   | 42383E   | 4    | SHCS 3/8-16 x 8.0"          |
| 14                                    | (See Fig. 10)                                    |  |  | 1    | Adapter Assy.               |
| 15                                    | DS1055398E                                       | DS1055398E                                       | DS1055398E                                       | 1    | Air Baffle                  |
| 16                                    | DS1056098E                                       | DS1056098E                                       | DS1056098E                                       | 1    | Cover, Shroud               |
| 17                                    | 68884E   | 68884E   | 68884E   | 1    | Screen                      |
| 18                                    | (See Fig. 16)                                    | (See Fig. 17)                                    | (See Fig. 18)                                    | 1    | Shroud Electrical Assembly  |
| 19                                    | 561604E  | 561604E  | 561604E  | 1    | Roll Pin 1/8 x 3/8" Lg.     |
| 20                                    | 69442E   | 69442E   | 69442E   | 1    | Nipple 1/4 NPT x 3"         |
| 21                                    | 80241E   | 80241E   | 80241E   | 1    | Pipe Coupling 1/4"          |
| 26                                    | (See Fig. 9)                                     |  |  | 1    | Filter Block Asm            |
| 27                                    | DS1057037E                                       | DS1057037E                                       | DS1057037E                                       | 1    | Gasket, Shroud Cover        |
| 28                                    | DS1135042E                                       | DS1135042E                                       | DS1135042E                                       | 8    | HHCS 10-32 x 3/8" Lg.       |
| 29                                    | DS1136108E                                       | DS1136108E                                       | DS1136108E                                       | 8    | Washer, Sealing             |
| 30                                    | 42336E   | 42336E   | 42336E   | 4    | Nut, Acorn                  |
| 31                                    | 65892E   | 65892E   | 65892E   | 4    | Washer, Sealing             |
| 32                                    | DS1137305E                                       | ---  | ---  | 4    | Stud, 1/4-20 x 2.75" Lg.    |
|                                       | ---  | DS1138305E                                       | DS1138305E                                       | 4    | Stud, 1/4-20 x 1.50" Lg.    |
| 33                                    | 69264E   | 69264E   | 69264E   | 1    | Breather Vent               |
| 34                                    | 65888E   | 65888E   | 65888E   | 2    | Push-On Terminal            |
| 35                                    | DS1139186E                                       | ---  | ---  | 4    | Spacer, 1.69" Lg.           |
|                                       | ---  | 44620E   | 44620  | 4    | Spacer, 0.38" Lg.           |
| 36                                    | DC9922026E                                       | DC9922026E                                       | DC9922026E                                       | 1    | Decal, High Voltage         |
| 37                                    | 69917E   | 69917E   | 69917E   | 1    | Ring Terminal, 1/4"         |
| 38                                    | CCE1060108-6AE                                   | CCE1060108-6AE                                   | CCE1060108-6AE                                   | 1    | Washer, 6mm Zinc            |
| 39                                    | CBE1060120-1DE                                   | CBE1060120-1DE                                   | CBE1060120-1DE                                   | 1    | Nut, M6                     |

★Included in 54177K Repair Kit.

Figure 4 - 18852SR Pump Assembly



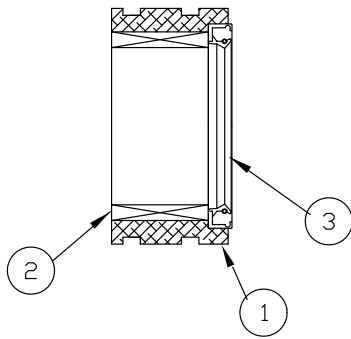


**Repair Parts List (Refer to figure 4)**

| Item | Part Number  | Qty. | Description               | Item | Part Number  | Qty. | Description             |
|------|--------------|------|---------------------------|------|--------------|------|-------------------------|
| 1    | 43769E       | 1    | Pump Body 2 Piston        | 27   | 68849E       | 1    | Plate-Bottom            |
| 2    | 68360E       | 1    | Bearing, Roller           | 28   | 68883E       | 2    | Gear-Pump .1875         |
| 3    | 66033E       | 1    | Thrust Bearing            | 29   | 68850E       | 1    | Shaft-Idler             |
| 4    | 66474E       | 2    | Thrust Washer             | 30   | ★ 68921E     | 1    | Screen                  |
| 5    | (See Fig. 7) | 1    | Eccentric Shaft Assembly  | 31   | 68894E       | 2    | Tube-Guide .11          |
| 6    | 66106E       | 1    | Thrust Bearing            | 32   | 68255E       | 4    | SHCS 1/4-28 x 1-3/4"    |
| 7    | 66108E       | 2    | Thrust Washer             | 33   | 68927E       | 1    | Plate-Screen Mtg.       |
| 8    | (See Fig. 5) | 1    | Adapter-Shaft Asm.        | 34   | 89148E       | 1    | SHCS 1/4-28 x 1-1/2"    |
| 9    | ★ 56020322E  | 2    | O-Ring 1-7/8 x 2" Ure     | 35   | 68225E       | 1    | Spring                  |
| 10   | 68978E       | 1    | Retaining Ring            | 36   | 81332E       | 1    | Roll Pin 1/8 x 15/16"   |
| 11   | 68945E       | 1    | Adaptor .225 Dia.         | 37   | 68226E       | 1    | Screw, Ball Stop        |
| 12   | 67868E       | 1    | Piston .225 Dia.          | 38   | 85726E       | 2    | Gasket 25/64 x 19/32"   |
| 13   | 68340E       | 1    | Spring, Piston            | 39   | 43673E       | 1    | Spring Cap Unload Valve |
| 14   | 68810E       | 1    | Ball Stop                 | 41   | 68569E       | 1    | Tube Return             |
| 15   | 93950E       | 1    | 1/4" Soc Pipe Plug        | 42   | ★ 69513E     | 2    | Shaft Adp Backup Was.   |
| 16   | (See Fig. 6) | 1    | Unloading Piston Assy     | 43   | 66042E       | 1    | Spring                  |
| 17   | 66043E       | 1    | Ball Retainer             | 44   | 68891E       | 3    | Bearing                 |
| 18   | 90906E       | 5    | Ball 1/8"                 | 45   | 68892E       | 1    | Ring-Retaining          |
| 19   | 66046E       | 1    | Intake Seat               | 46   | 81093E       | 3    | Pipe Plug 1/8" Flush    |
| 20   | 68851SR      | 1    | Tube Asm                  | 47   | ▲ 68004E     | 1    | Seat - Ext Relief       |
| 21   | 91701E       | 2    | Ball 5/16"                | 48   | ▲ 68003E     | 1    | Cone - Ext Relief       |
| 22   | 43671E       | 1    | Unloading Spring          | 49   | ▲ 66085E     | 1    | Spring - Relief Valve   |
| 23   | 43674E       | 1    | Set Screw Unloading Valve | 50   | 66083E       | 1    | Relief Valve Adj. Screw |
| 24   | 43675E       | 1    | Hex Nut Unloading Valve   | 53   | (See Fig. 8) | 1    | Piston Blk .225         |
| 25   | 97641E       | 2    | 1/16" Soc Pipe Plug       | 54   | 69392E       | 2    | SHCS 5/16-24 x 1.75"    |
| 26   | 68848E       | 1    | Tube Extend               | 55   | 82687E       | 2    | SHCS 5/16-24 x 5/8"     |

★ Included in 54177K Repair Kit. ▲ Included in 55057K Relief Kit.

**Figure 5 - 68829SR Adapt-Shaft Assembly**

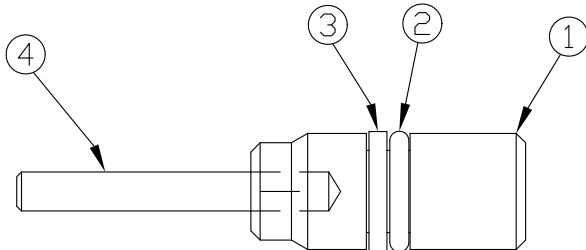


**Repair Parts List (Refer to figure 5)**

| Item | Part Number | Qty. | Description   |
|------|-------------|------|---------------|
| 1    | 68912E      | 1    | Adapter Shaft |
| 2    | 66030E      | 1    | Bearing       |
| 3    | ★68901E     | 1    | Seal          |

★Included in Repair Kit 54177K.

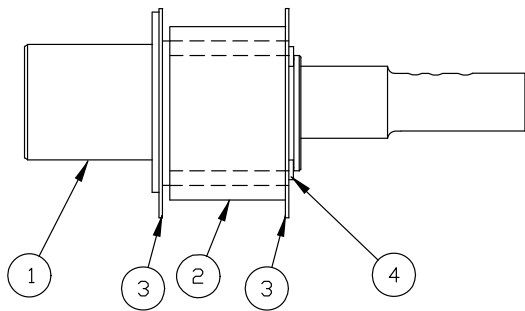
**Figure 6 - 43766SR Unloading Piston Assembly**



**Repair Parts List (Refer to figure 6)**

| Item | Part Number | Qty. | Description    |
|------|-------------|------|----------------|
| 1    | 43765E      | 1    | Unload Piston  |
| 2    | 5602009E    | 1    | O-Ring         |
| 3    | 43768E      | 1    | Back-Up Washer |
| 4    | 43686E      | 1    | Roll Pin       |

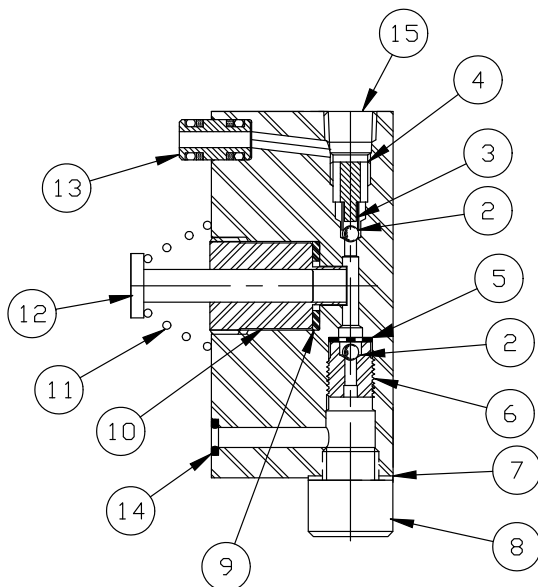
**Figure 7 - 69082SR Eccentric Shaft Assembly**



**Repair Parts List (Refer to figure 7)**

| Item | Part Number | Qty. | Description     |
|------|-------------|------|-----------------|
| 1    | 68859E      | 1    | Eccentric Shaft |
| 2    | 69081SR     | 1    | Bearing         |
| 3    | 69475E      | 2    | Bearing Washer  |
| 4    | 67863E      | 1    | Retaining Ring  |
| 5    | 90548E      | 1    | Ball            |

**Figure 8 - 68502SR Piston Block Assembly**

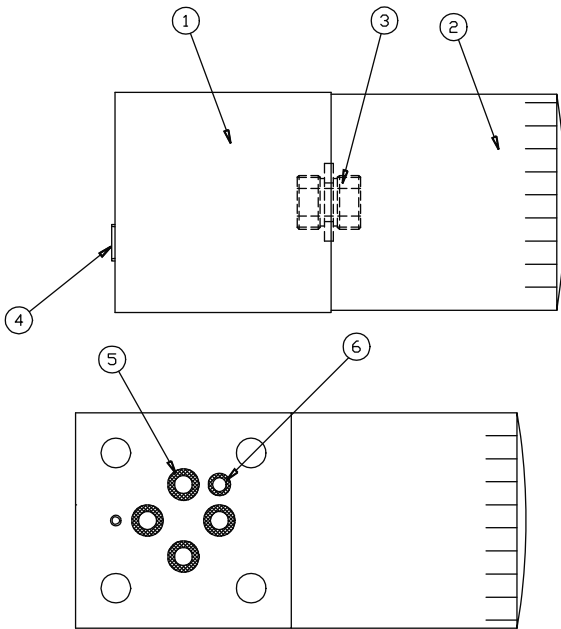


**Repair Parts List (Refer to figure 8)**

| Item | Part Number | Qty. | Description           |
|------|-------------|------|-----------------------|
| 2    | 90906E      | 2    | Ball 1/8"             |
| 3    | 66042E      | 1    | Spring                |
| 4    | 68810E      | 1    | Ball Stop             |
| 5    | 66043E      | 1    | Ball Retainer         |
| 6    | 66046E      | 1    | Intake Seat           |
| 7    | 86269E      | 1    | Gasket 29/64" x 5/8"  |
| 8    | 68825E      | 1    | Plug, Piston Block    |
| 9    | 85726E      | 1    | Gasket 25/64 x 19/32" |
| 10   | 68945E      | 1    | Adaptor .225 Dia.     |
| 11   | 68340E      | 1    | Spring, Piston        |
| 12   | 67868E      | 1    | Piston, .225 Dia.     |
| 13   | 68970SR     | 1    | Adapter Assy.         |
| 14   | ★5602008E   | 1    | O-Ring 3/16 x 5/16"   |
| 15   | 81093E      | 1    | Pipe Plug 1/8" Flush  |

★Included in Repair Kit 54177K.

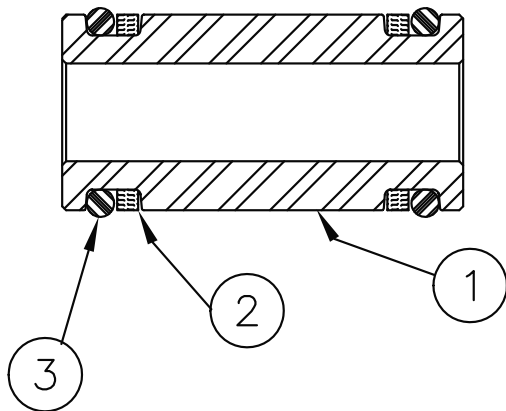
Figure 9 - 69740USR Filter Block Assembly



Repair Parts List (Refer to figure 9)

| Item | Part Number | Qty. | Description             |
|------|-------------|------|-------------------------|
| 1    | 69546E      | 1    | Filter Block            |
| 2    | 69670E      | 1    | Oil Filter Power Pump   |
| 3    | 69144E      | 1    | Adapter Filter          |
| 4    | 93950E      | 2    | 1/4" Soc Pipe Plug      |
| 5    | 56020112E   | 4    | O-Ring 5/16 x 7/16" URE |
| 6    | 5602008E    | 1    | O-Ring 3/16 x 5/16"     |

Figure 10 - 68963SR Adapter Assembly

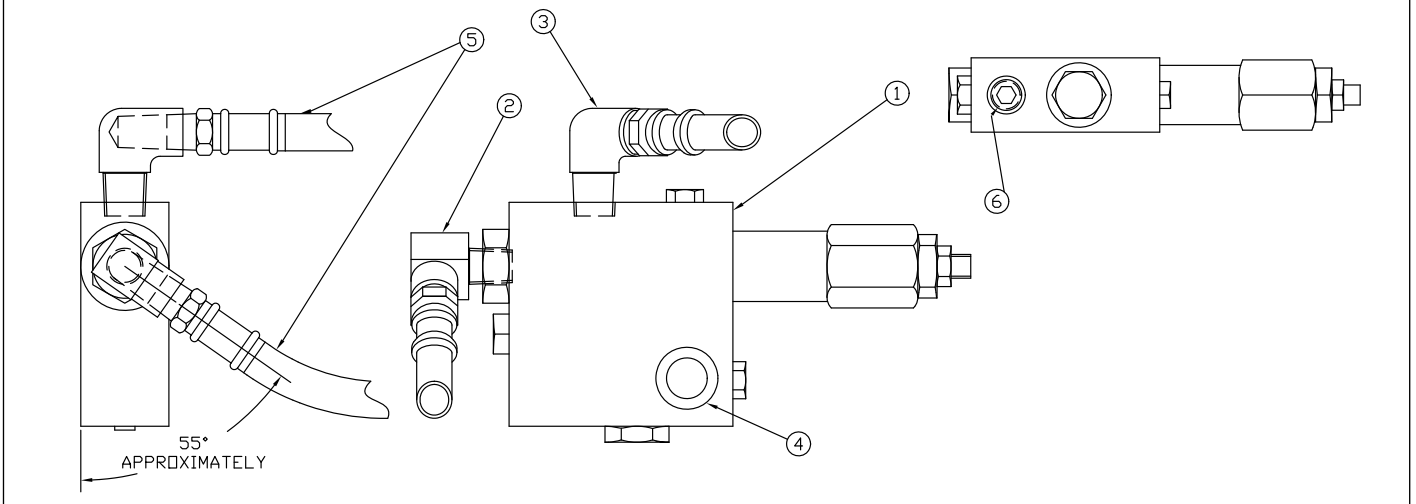


Repair Parts List (Refer to figure 10)

| Item | Part Number | Qty. | Description   |
|------|-------------|------|---------------|
| 1    | 88073E      | 2    | Valve Adapter |
| 2    | ★ 65881E    | 2    | B-U Ring      |
| 3    | 5602012E    | 1    | Valve Adapter |

★Included in Repair Kit 54177K.

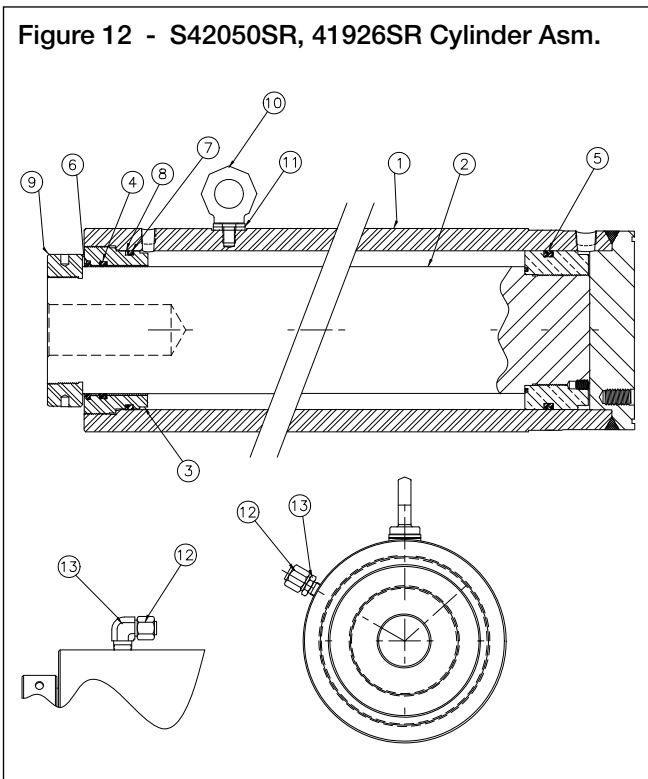
**Figure 11 - 42353SR OC Valve Subassembly**



| Repair Parts List (Refer to figure 11) |          |      |                        |
|--|----------|------|------------------------|
| Item                                   | Model    | Qty. | Description            |
| 1                                      | 69522MSR | 1    | O.C. Valve Asm New PR  |
| 2                                      | 18970E   | 1    | Elbow 1/4" 90 Deg Strt |
| 3                                      | 42352E   | 1    | Elbow 1/4-3/8" 90 Strt |
| 4                                      | 68183E   | 2    | Gasket-Plug            |
| 5                                      | 42354E   | 2    | Hose 1/4 x 17" Nw PR   |
| 6                                      | 84084E   | 1    | 3/8" Pipe Plug - Flush |
| N/S                                    | 94414E   | 1    | Ball 7/16"             |

N/S = Not Shown.

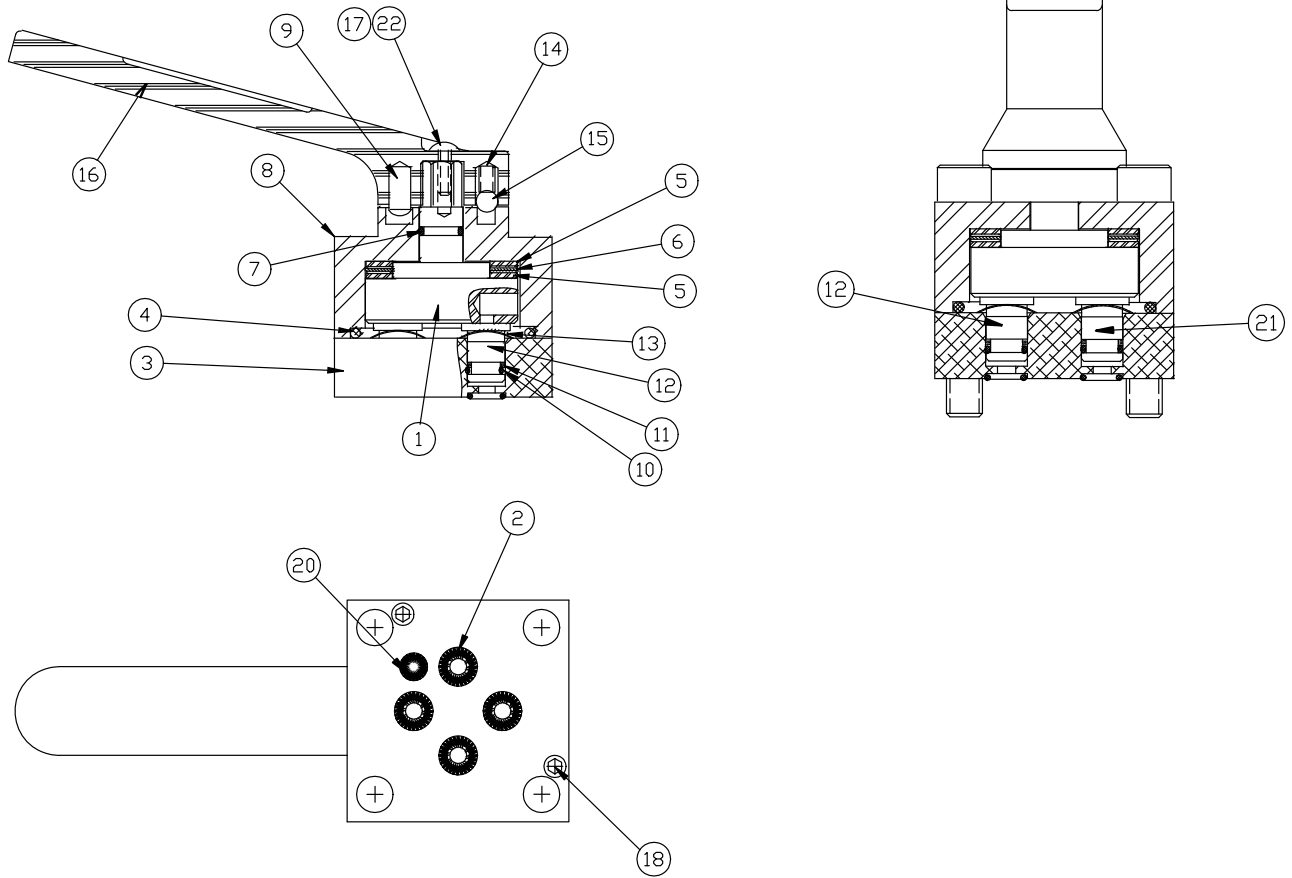
**Figure 12 - S42050SR, 41926SR Cylinder Asm.**



| Repair Parts List (Refer to figure 12) |                               |                               |      |                       |
|--|-------------------------------|-------------------------------|------|-----------------------|
| Model                                  | PREM_15016L<br>(all versions) | PREM_15027L<br>(all versions) |      |                       |
| Item                                   | Asm.<br>S42050SR              | Asm.<br>41926SR               | Qty. | Description           |
| 1                                      | 42048E                        | 41927E                        | 1    | Cylinder Weldment     |
| 2                                      | 42051SR                       | 41930SR                       | 1    | Piston Rod Asm.       |
| 3                                      | 41933E                        | 41933E                        | 1    | 150 Ton Head Gland    |
| 4                                      | *                             | *                             | 1    | T-Seal Rod 5" Dia     |
| 5                                      | *                             | *                             | 1    | T-Seal Piston 6-1/4"  |
| 6                                      | *                             | *                             | 1    | Wiper 5" Rod Dia      |
| 7                                      | *                             | *                             | 1    | O-Ring 6" x 6-1/4"    |
| 8                                      | *                             | *                             | 1    | B-U Washer            |
| 9                                      | 41934E                        | 41934E                        | 1    | Ring                  |
| 10                                     | N/A                           | 43308E                        | 1    | Swivel Eye Bolt 1/2"  |
| 11                                     | N/A                           | 43307E                        | 1    | Washer Eyebolt        |
| 12                                     | 45664E                        | 45664E                        | 1    | O-Ring Face Seal Plug |
| 13                                     | 44865E                        | 45666E                        | 1    | O-Ring Ftg, 3/8" NPT  |

\* Included in 54403K Repair Kit. N/A = Not Available.

Figure 13 - 69101SR 4-Way Manual Valve Subassembly



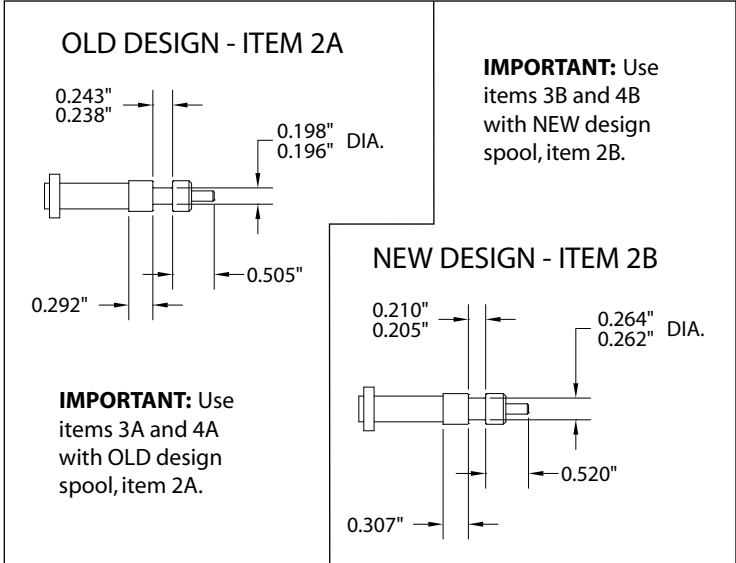
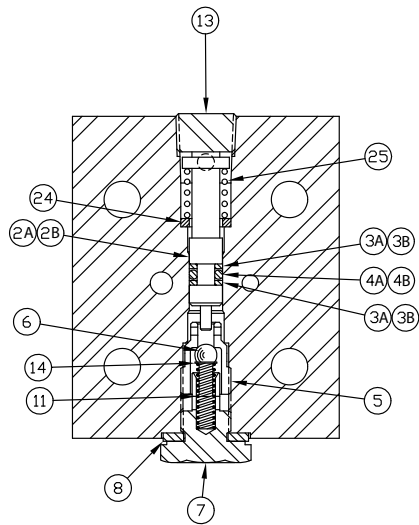
Repair Parts List (Refer to figure 13)

| Item | Part Number | Qty. | Description       | Item | Part Number | Qty. | Description   |
|------|-------------|------|-------------------|------|-------------|------|---------------|
| 1    | 43762E      | 1    | Valve Rotor       | 12   | 68029E      | 1    | Shear Seal    |
| 2    | * 56020112E | 4    | O-Ring            | 13   | 68028E      | 3    | Spring Washer |
| 3    | 68180E      | 1    | Subplate - Valve  | 14   | 68025E      | 1    | Detent Spring |
| 4    | * 5602225E  | 1    | O-Ring            | 15   | 92549E      | 1    | Ball          |
| 5    | 68026E      | 2    | Thrust Washer     | 16   | 69091E      | 1    | Valve Handle  |
| 6    | 68155E      | 1    | Thrust Bearing    | 17   | 44595E      | 1    | Screw         |
| 7    | * 5602012E  | 1    | O-Ring            | 18   | 85317E      | 2    | Screw         |
| 8    | 69135E      | 1    | Upper Valve Block | N/S  | 93598E      | 4    | Screw         |
| 9    | 93804E      | 1    | Drive Lok Pin     | 20   | 5602008E    | 1    | O-Ring        |
| 10   | * 5602011E  | 3    | O-Ring            | 21   | 68181E      | 2    | Shear Seal    |
| 11   | * 65882E    | 3    | Washer            | 22   | Y0010765E   | 1    | Lockwasher    |

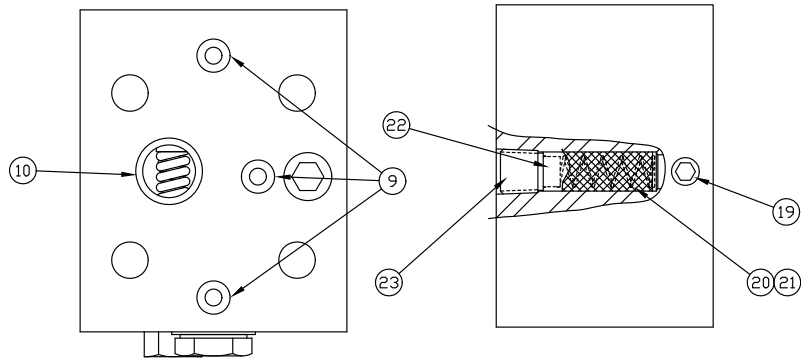
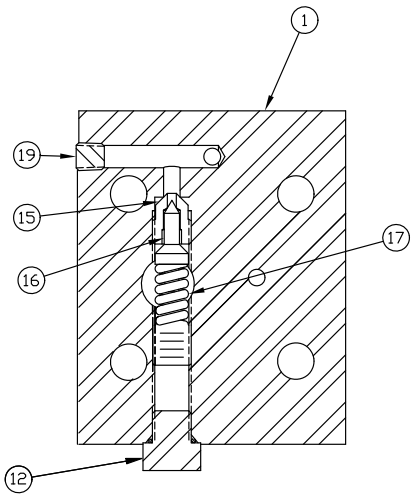
N/S = Not Shown. \* Included in Valve Kit 54490K.

Figure 14 - 42480SR Locking Valve Subassembly (with relief)

**SPOOL AND SEAL REPLACEMENT INFORMATION**



**Note:** Old design spool (2A) must be replaced with new design spool (2B) if it is worn or damaged. Old design spool (2A) is no longer available.

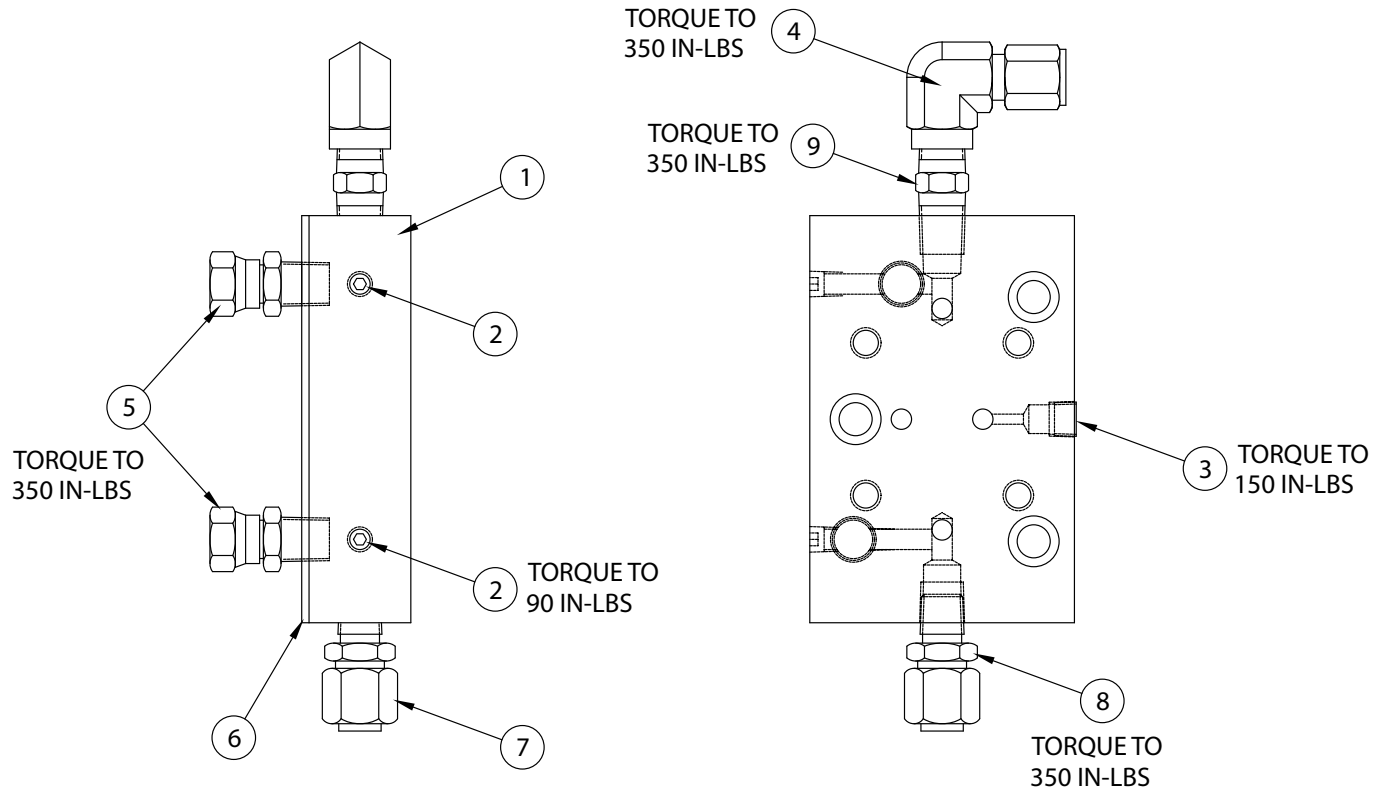


**Repair Parts List (Refer to figure 14)**

| Item | Part Number     | Qty. | Description                 | Item | Part Number | Qty. | Description                 |
|------|-----------------|------|-----------------------------|------|-------------|------|-----------------------------|
| 1    | 42307E          | 1    | Locking Valve Body - Relief | 12   | 68258E      | 1    | Plug SAE #4                 |
| 2A   | (not available) | 1    | Spool Piston (old design)   | 13   | 84084E      | 1    | Spring Washer               |
| 2B   | 42727E          | 1    | Spool Piston (new design)   | 14   | 69870E      | 1    | Spring Eyelet Lock          |
| 3A   | 5608106E        | 2    | Backup Washer 8-106         | 15   | ▲68004E     | 1    | Seat - Ext Relief           |
| 3B   | ✚43927E         | 2    | Backup Washer TEF -010      | 16   | ▲68003E     | 1    | Cone - Ext Relief           |
| 4A   | 5602106E        | 1    | O-Ring 3/16 x 3/8"          | 17   | ▲66085E     | 1    | Spring - Relief Valve       |
| 4B   | ✚B1005503       | 1    | O-Ring 1/4 x 3/8"           | 18   | 66083E      | 1    | Relief Valve Adjusting Scr. |
| 5    | 68590E          | 1    | Seat                        | 19   | 40049E      | 3    | 1/16" Pipe Plug - Flush     |
| 6    | 92526E          | 1    | Ball 9/32"                  | 20   | 69518E      | 1    | Screen O.C. Valve           |
| 7    | 69508E          | 1    | Plug - Adapt P.R. Lock      | 21   | 42423E      | 1    | Screen O.C. Valve           |
| 8    | 68183E          | 1    | Gasket - Plug               | 22   | 69517E      | 1    | Screen Cap                  |
| 9    | 56020102E       | 3    | O-Ring 1/4 x 3/8" Ureth     | 23   | 82522E      | 1    | Pipe Plug 1/4" Flush        |
| 10   | 56020162E       | 1    | O-Ring 5/8 x 3/4" Ureth     | 24   | 42726E      | 1    | Washer PR Lock Block        |
| 11   | 68870E          | 1    | Compression Spring          | 25   | 68871E      | 1    | Compression Spring          |

▲ Included in 55057K Relief Kit. ✚ Included with item 2B

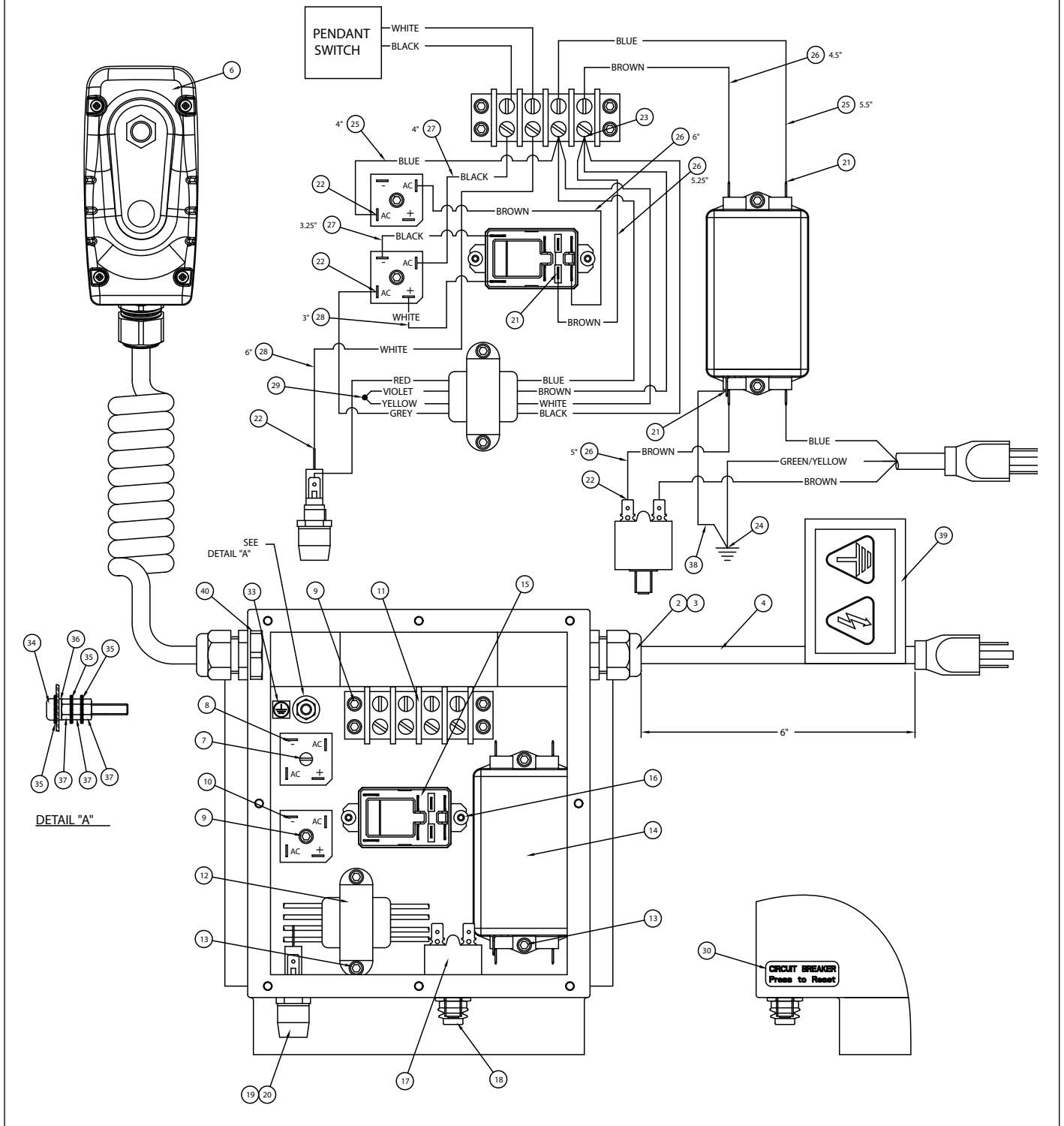
Figure 15 - 69749SR Manifold Assembly



**Repair Parts List (Refer to figure 15)**

| Item | Part Number | Qty. | Description             | Item | Part Number | Qty. | Description                |
|------|-------------|------|-------------------------|------|-------------|------|----------------------------|
| 1    | 69429E      | 1    | Manifold Pow'r Riser    | 6    | 69510E      | 1    | Gasket, Valve Pow'r Risers |
| 2    | 40049E      | 2    | 1/16" Pipe Plug - Flush | 7    | 45664E      | 1    | O-Ring Face Seal Plug      |
| 3    | 81093E      | 1    | Pipe Plug 1/8" Flush    | 8    | 45663E      | 1    | O-Ring Face Tube Ftg 1/4"  |
| 4    | 43166E      | 1    | Elbow 90 3/8 - 1/4"     | 9    | 4100067E    | 1    | Nipple 1/4"                |
| 5    | 41964E      | 2    | Swivel Fitting          |      |             |      |                            |

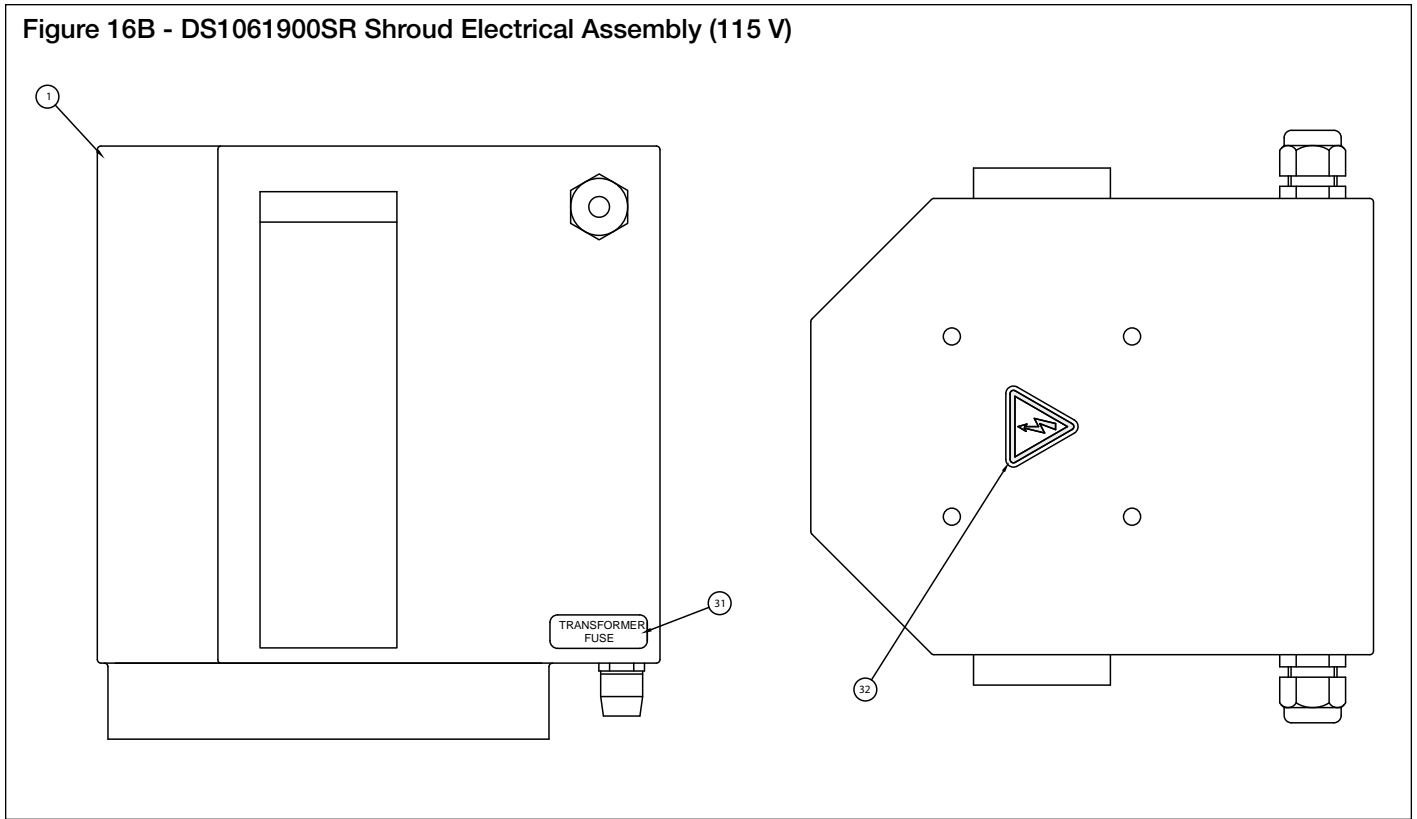
Figure 16A - DS1061900SR Shroud Electrical Assembly (115 V)



**WARNING:** High voltage. Disconnect power cord from electrical outlet before beginning any repairs.



Figure 16B - DS1061900SR Shroud Electrical Assembly (115 V)

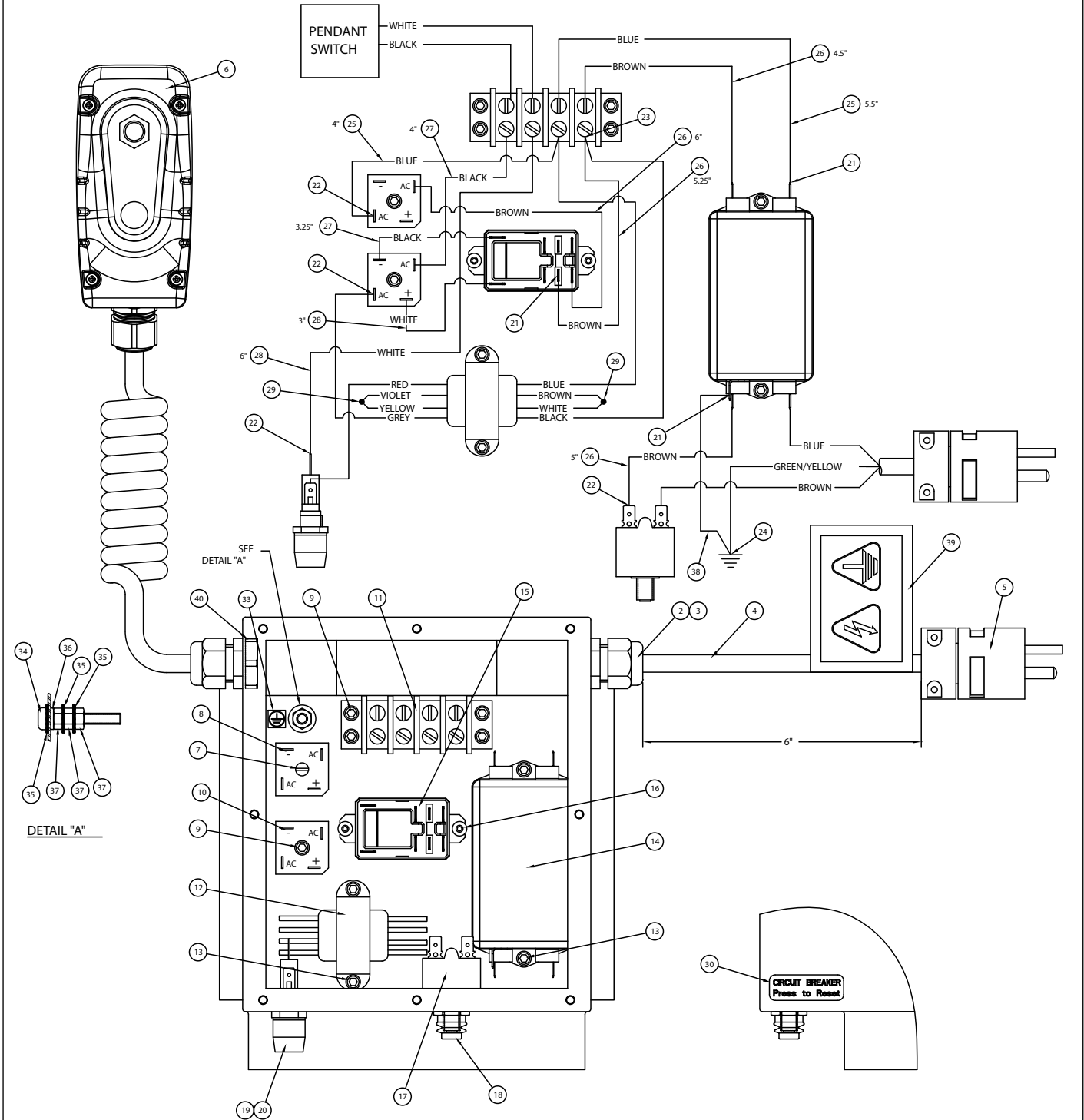


**Repair Parts List (Refer to figure 16A and 16B)**

| Item | Part Number   | Qty. | Description                | Item | Part Number    | Qty. | Description             |
|------|---------------|------|----------------------------|------|----------------|------|-------------------------|
| 1    | DS1054424E    | 1    | Shroud                     | 22   | 65888E         | 10   | Terminal, Push On       |
| 2    | 68375E        | 1    | Fitting, Cord, L-Tight     | 23   | 65887E         | 6    | Spade, Terminal         |
| 3    | 85510E        | 1    | Locknut, 1/2 inch          | 24   | 69917E         | 2    | Ring, Terminal          |
| 4    | 68595E        | 1    | Plug and Cord Assy.        | 25   | DS1065452E     | A/R  | Wire #14GA Strand Blue  |
| 6    | (See Fig. 21) | 1    | Pendant Assy.              | 26   | 46676E         | A/R  | Wire #14GA Brown        |
| 7    | 88032E        | 1    | RHMS 10-32 5/8" Lg.        | 27   | 68261BE        | A/R  | Wire #14GA Black        |
| 8    | DS1244380E    | 1    | Bridge Rectifier 1600V     | 28   | 68262BE        | A/R  | Wire #14GA White        |
| 9    | 66805E        | 5    | SHCS 10-32 x 1/2" Lg.      | 29   | 68093E         | 1    | Wire Nut, Blue          |
| 10   | 68623E        | 1    | Bridge Rectifier 25A       | 30   | DC8237026E     | 1    | Decal, CB Reset         |
| 11   | 69599E        | 1    | Terminal Strip             | 31   | DS1169026E     | 1    | Decal, Transformer Fuse |
| 12   | 68717E        | 1    | Transformer                | 32   | DC9922026E     | 1    | Decal, High Voltage     |
| 13   | 45175E        | 4    | SHCS 10-32 x 1/4" Lg. Plt. | 33   | DC8119026E     | 1    | Decal, ZE Ground        |
| 14   | DS1051380E    | 1    | EMI Filter                 | 34   | DC9984028E     | 1    | M6 x 40 Pan Hd. Screw   |
| 15   | DS1064980E    | 1    | Relay, 30A/250V 12VDC      | 35   | CCE1060108E    | 3    | Star Washer, 6mm Zinc   |
| 16   | 81145E        | 2    | BHCS 8-32 x 1/4" Lg.       | 36   | CAE1060108-1AE | 1    | Flat Washer, 6mm Zinc   |
| 17   | DS1058380E    | 1    | Circuit Breaker, 20A       | 37   | CBE1060120-1DE | 3    | Nut, M6                 |
| 18   | DC8200380E    | 1    | Reset Cap, Circuit Breaker | 38   | DS1066452E     | A/R  | Wire #14GA Green/Yellow |
| 19   | 69754E        | 1    | Fuse Holder, 250V          | 39   | DD1651026E     | 1    | Decal, Electric Shock   |
| 20   | 68170E        | 1    | Fuse                       | 40   | DC9538021E     | 1    | Locking Nut, 20mm       |
| 21   | 44491E        | 9    | Flag, Quick-Disc. Blue     |      |                |      |                         |

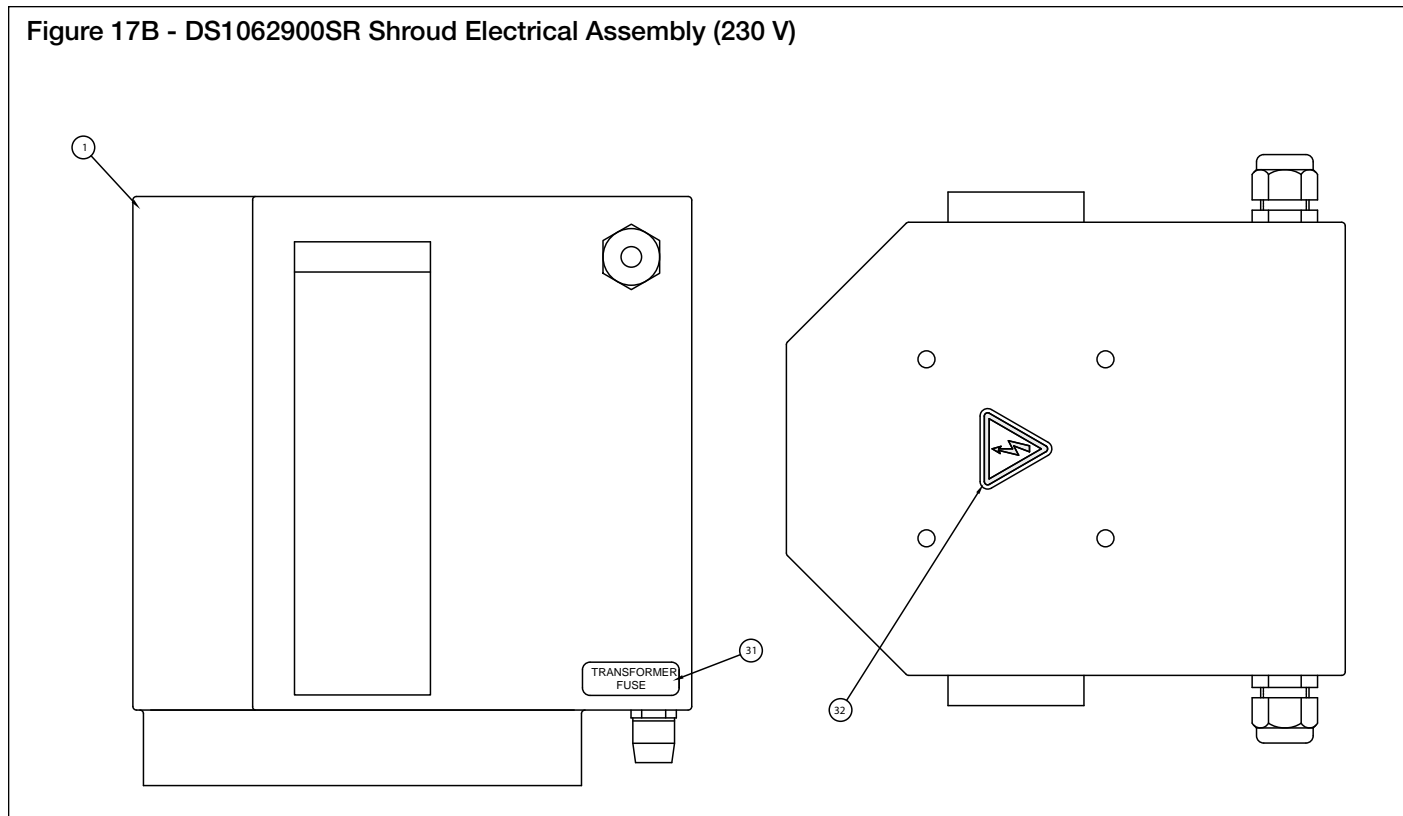
A/R = As Required

Figure 17A - DS1062900SR Shroud Electrical Assembly (230 V)



**WARNING:** High voltage. Disconnect power cord from electrical outlet before beginning any repairs.

Figure 17B - DS1062900SR Shroud Electrical Assembly (230 V)

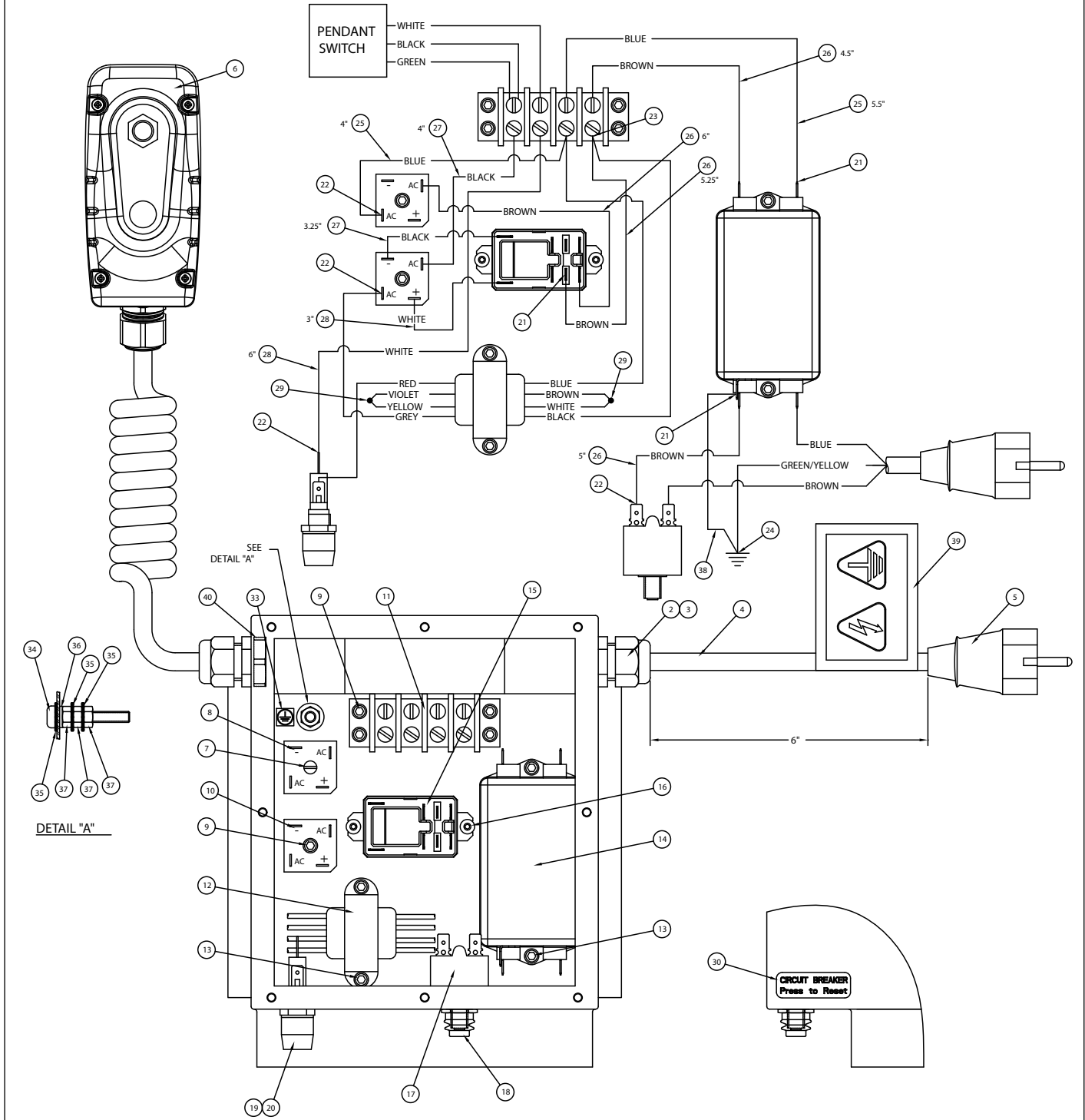


**Repair Parts List (Refer to figure 17A and 17B)**

| Item | Part Number   | Qty. | Description                | Item | Part Number    | Qty. | Description             |
|------|---------------|------|----------------------------|------|----------------|------|-------------------------|
| 1    | DS1054424E    | 1    | Shroud                     | 21   | 44491E         | 9    | Flag, Quick-Disc. Blue  |
| 2    | 68375E        | 1    | Fitting, Cord, L-Tight     | 22   | 65888E         | 10   | Terminal, Push On       |
| 3    | 85510E        | 1    | Locknut, 1/2 inch          | 23   | 65887E         | 6    | Spade, Terminal         |
| 4    | 69604RE       | 1    | Power Cord, 1.6 Ft. Lg.    | 24   | 69917E         | 2    | Ring, Terminal          |
| 5    | 87093E        | 1    | Plug 20 Amps-250V          | 25   | DS1065452E     | A/R  | Wire #14GA Strand Blue  |
| 6    | (See Fig. 21) | 1    | Pendant Assy.              | 26   | 46676E         | A/R  | Wire #14GA Brown        |
| 7    | 88032E        | 1    | RHMS 10-32 5/8" Lg.        | 27   | 68261BE        | A/R  | Wire #14GA Black        |
| 8    | DS1244380E    | 1    | Bridge Rectifier 1600V     | 28   | 68262BE        | A/R  | Wire #14GA White        |
| 9    | 66805E        | 5    | SHCS 10-32 x 1/2" Lg.      | 29   | 68093E         | 2    | Wire Nut, Blue          |
| 10   | 68623E        | 1    | Bridge Rectifier 25A       | 30   | DC8237026E     | 1    | Decal, CB Reset         |
| 11   | 69599E        | 1    | Terminal Strip             | 31   | DS1169026E     | 1    | Decal, Transformer Fuse |
| 12   | 68717E        | 1    | Transformer                | 32   | DC9922026E     | 1    | Decal, High Voltage     |
| 13   | 45175E        | 4    | SHCS 10-32 x 1/4" Lg. Plt. | 33   | DC8119026E     | 1    | Decal, ZE Ground        |
| 14   | DS1051380E    | 1    | EMI Filter                 | 34   | DC9984028E     | 1    | M6 x 40 Pan Hd. Screw   |
| 15   | DS1064980E    | 1    | Relay, 30A/250V 12VDC      | 35   | CCE1060108-6AE | 3    | Star Washer, 6mm Zinc   |
| 16   | 81145E        | 2    | BHCS 8-32 x 1/4" Lg.       | 36   | CAE1060108-1AE | 1    | Flat Washer, 6mm Zinc   |
| 17   | DC8309380E    | 1    | Circuit Breaker, 12A       | 37   | CBE1060120-1DE | 3    | Nut, M6                 |
| 18   | DC8200380E    | 1    | Reset Cap, Circuit Breaker | 38   | DS1066452E     | A/R  | Wire #14GA Green/Yellow |
| 19   | 69754E        | 1    | Fuse Holder, 250V          | 39   | DD1651026E     | 1    | Decal, Electric Shock   |
| 20   | 68170E        | 1    | Fuse                       | 40   | DC9538021E     | 1    | Locking Nut, 20mm       |

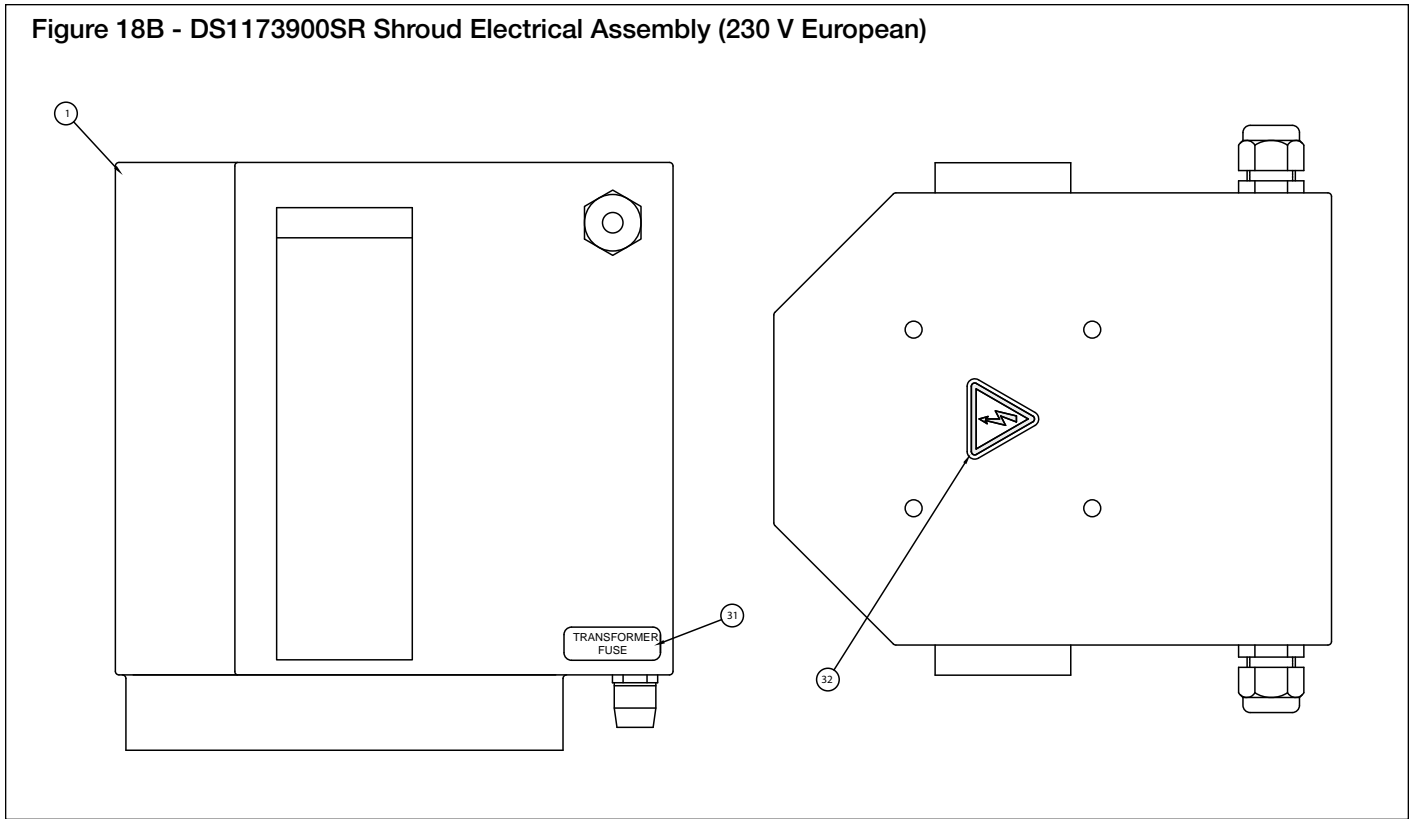
A/R = As Required

Figure 18A - DS1173900SR Shroud Electrical Assembly (230 V European)



**WARNING:** High voltage. Disconnect power cord from electrical outlet before beginning any repairs.

Figure 18B - DS1173900SR Shroud Electrical Assembly (230 V European)

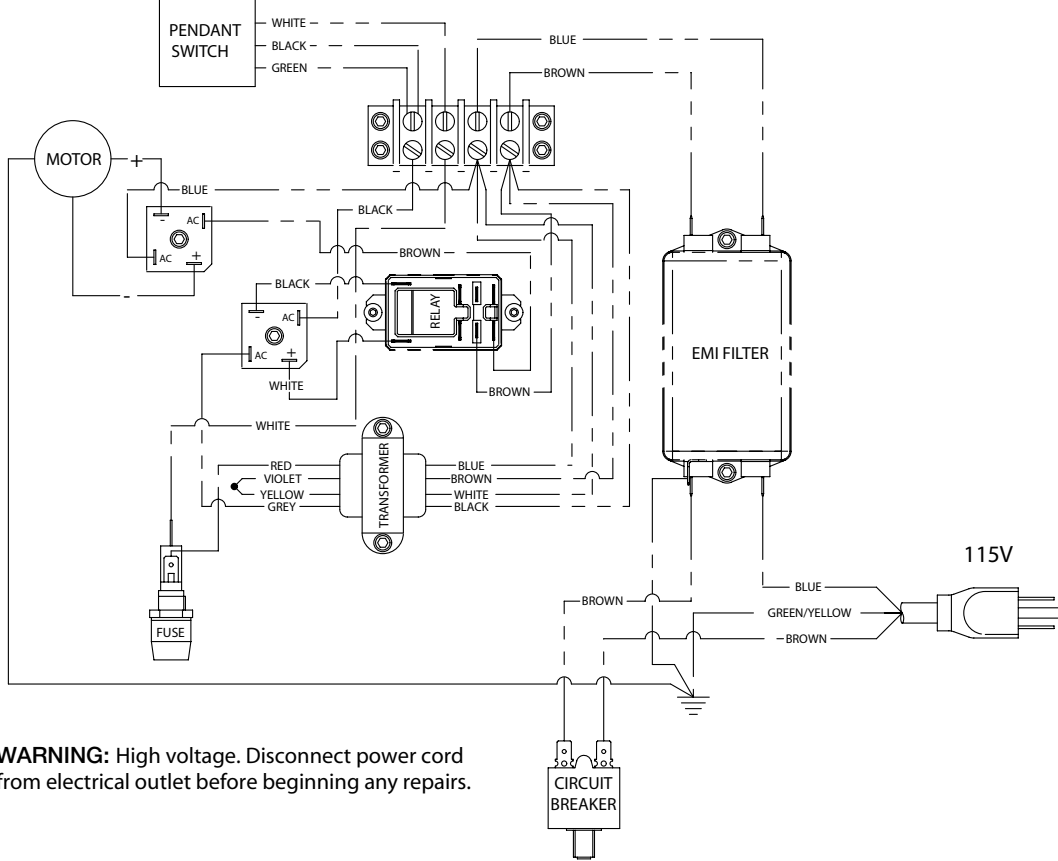


**Repair Parts List (Refer to figure 18A and 18B)**

| Item | Part Number   | Qty. | Description                | Item | Part Number    | Qty. | Description             |
|------|---------------|------|----------------------------|------|----------------|------|-------------------------|
| 1    | DS1054424E    | 1    | Shroud                     | 21   | 44491E         | 9    | Flag, Quick-Disc. Blue  |
| 2    | 68375E        | 1    | Fitting, Cord, L-Tight     | 22   | 65888E         | 10   | Terminal, Push On       |
| 3    | 85510E        | 1    | Locknut, 1/2 inch          | 23   | 65887E         | 6    | Spade, Terminal         |
| 4    | 69604RE       | 1    | Power Cord, 1.6 Ft. Lg.    | 24   | 69917E         | 2    | Ring, Terminal          |
| 5    | 69778E        | 1    | Plug 16 A, 250V European   | 25   | DS1065452E     | A/R  | Wire #14GA Strand Blue  |
| 6    | (See Fig. 21) | 1    | Pendant Assy.              | 26   | 46676E         | A/R  | Wire #14GA Brown        |
| 7    | 88032E        | 1    | RHMS 10-32 5/8" Lg.        | 27   | 68261BE        | A/R  | Wire #14GA Black        |
| 8    | DS1244380E    | 1    | Bridge Rectifier 1600V     | 28   | 68262BE        | A/R  | Wire #14GA White        |
| 9    | 66805E        | 5    | SHCS 10-32 x 1/2" Lg.      | 29   | 68093E         | 2    | Wire Nut, Blue          |
| 10   | 68623E        | 1    | Bridge Rectifier 25A       | 30   | DC8237026E     | 1    | Decal, CB Reset         |
| 11   | 69599E        | 1    | Terminal Strip             | 31   | DS1169026E     | 1    | Decal, Transformer Fuse |
| 12   | 68717E        | 1    | Transformer                | 32   | DC9922026E     | 1    | Decal, High Voltage     |
| 13   | 45175E        | 4    | SHCS 10-32 x 1/4" Lg. Plt. | 33   | DC8119026E     | 1    | Decal, ZE Ground        |
| 14   | DS1051380E    | 1    | EMI Filter                 | 34   | DC9984028E     | 1    | M6 x 40 Pan Hd. Screw   |
| 15   | DS1064980E    | 1    | Relay, 30A/250V 12VDC      | 35   | CCE1060108-6AE | 3    | Star Washer, 6mm Zinc   |
| 16   | 81145E        | 2    | BHCS 8-32 x 1/4" Lg.       | 36   | CAE1060108-1AE | 1    | Flat Washer, 6mm Zinc   |
| 17   | DC8309380E    | 1    | Circuit Breaker, 12A       | 37   | CBE1060120-1DE | 3    | Nut, M6                 |
| 18   | DC8200380E    | 1    | Reset Cap, Circuit Breaker | 38   | DS1066452E     | A/R  | Wire #14GA Green/Yellow |
| 19   | 69754E        | 1    | Fuse Holder, 250V          | 39   | DD1651026E     | 1    | Decal, Electric Shock   |
| 20   | 68170E        | 1    | Fuse                       | 40   | DC9538021E     | 1    | Locking Nut, 20mm       |

A/R = As Required

**Figure 19 - 115 Volt Wiring Diagram**



**Figure 20 - 230 Volt Wiring Diagram**

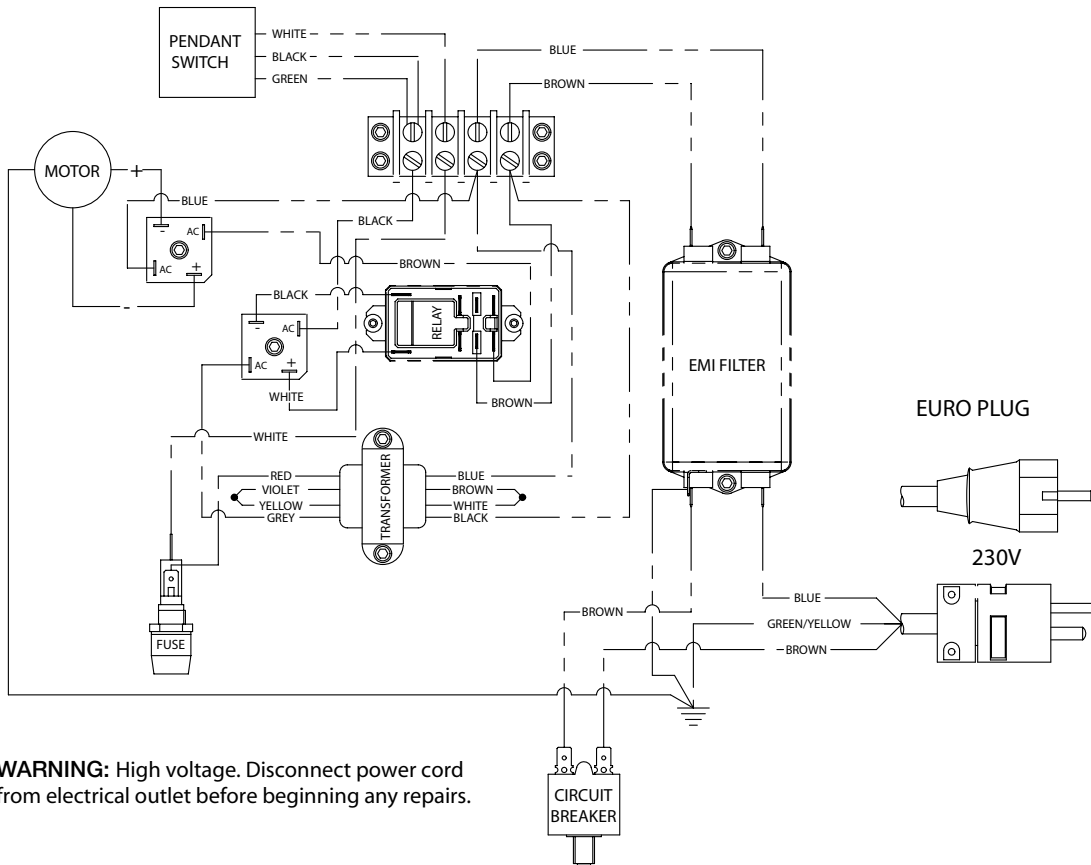
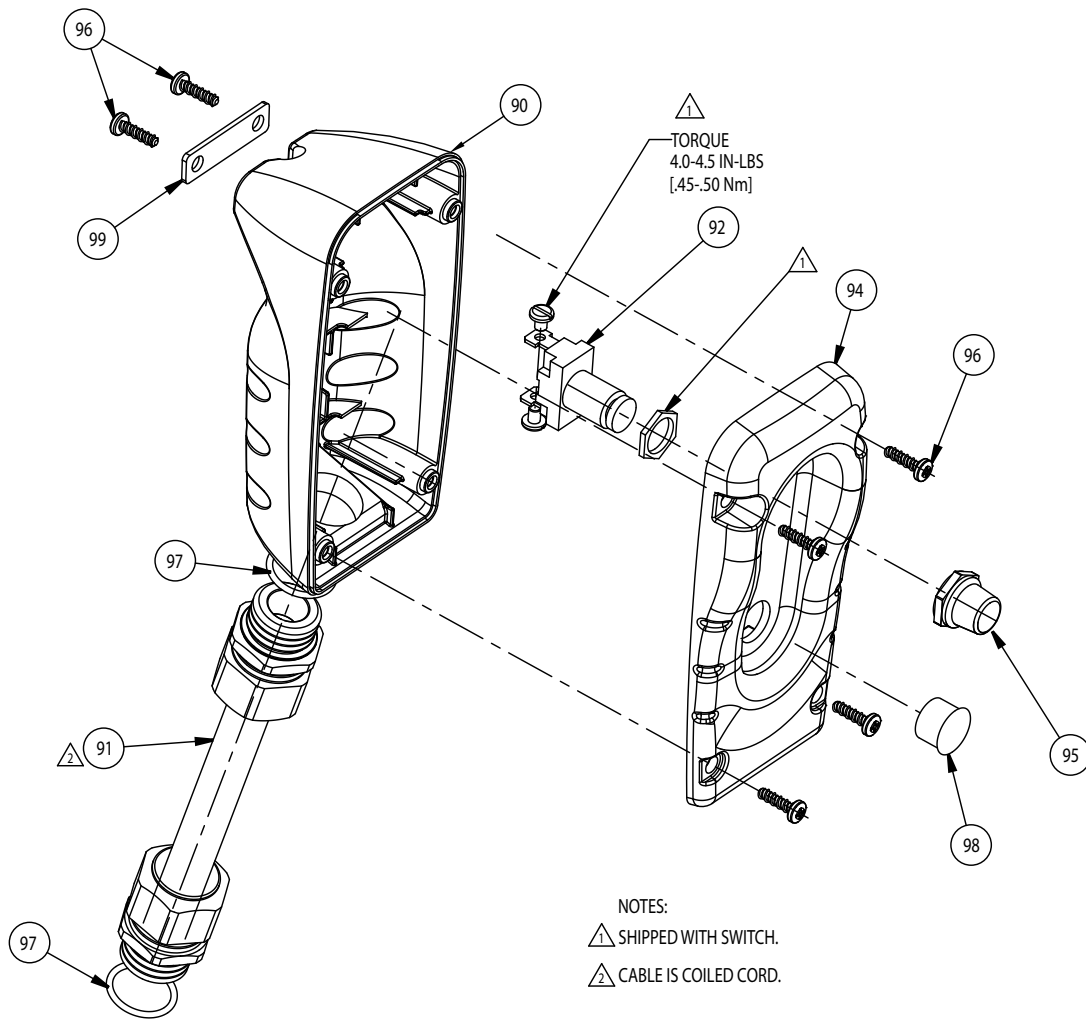


Figure 21 - DS1074900SR Pendant Assembly

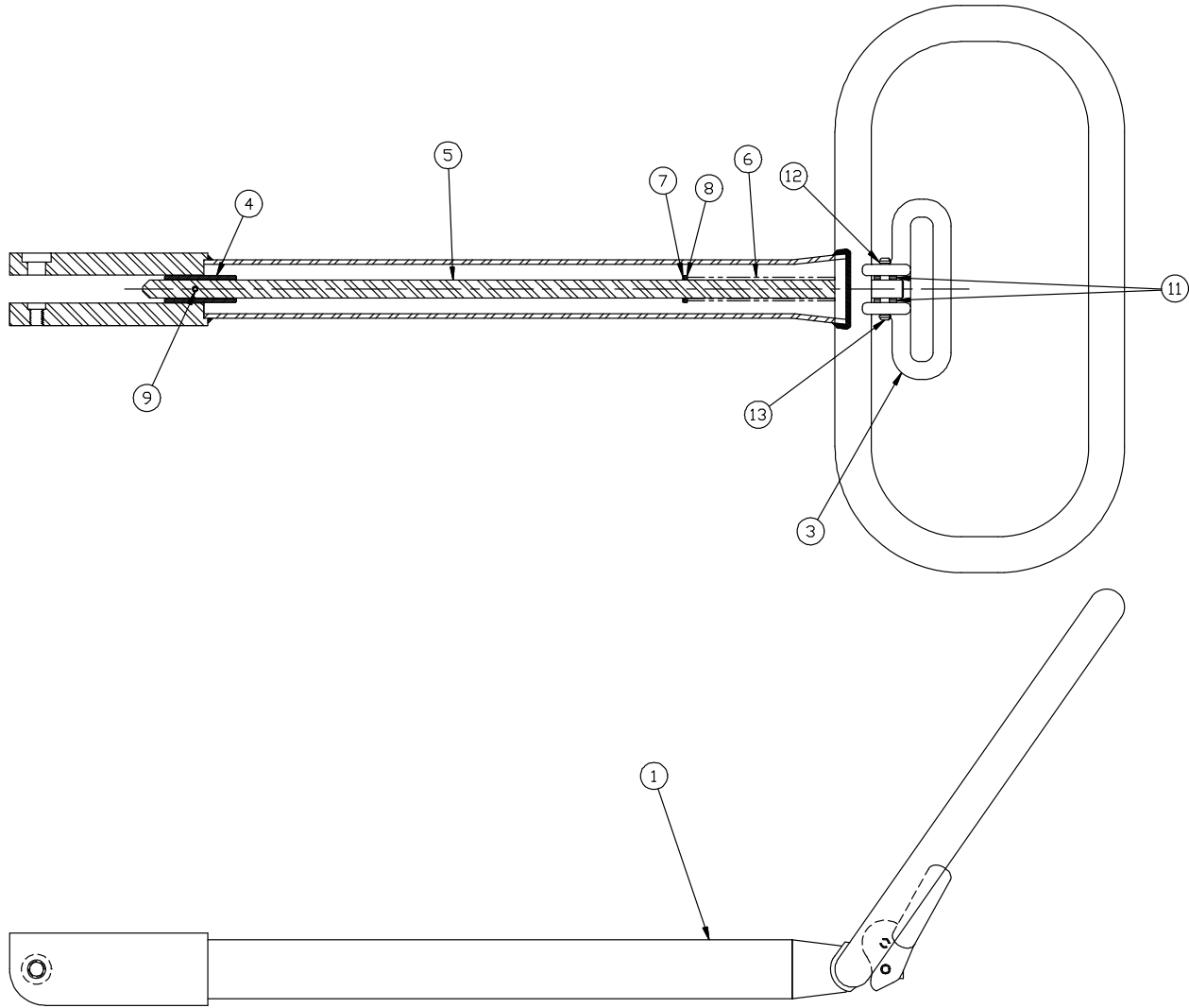


Repair Parts List for Figure 21

| Item | Part Number | Qty. | Description        | Item | Part Number | Qty. | Description             |
|------|-------------|------|--------------------|------|-------------|------|-------------------------|
| 90   | DC9425424E  | 1    | Enclosure, Lower   | 96   | DC9428008E  | 6    | Screw, Hi-Low #8 x 1/2" |
| 91   | DS1075960E  | 1    | Cable Assembly     | 97   | B1223503E   | 2    | O-Ring                  |
| 92   | DC8282379E  | 1    | Pendant Button, NO | 98   | DC8228009E  | 1    | Dome Plug               |
| 94   | DC8122424E  | 1    | Enclosure, Upper   | 99   | DS1167101E  | 1    | Plate, Pendant Hook     |
| 95   | DC8284379E  | 1    | Switch Cover       |      |             |      |                         |

Note: Pendant Assembly DS1074900SR includes all items shown above.

Figure 22 - 41961SR Upper Handle Assembly



Repair Parts List (Refer to figure 22)

| Item | Part Number | Qty. | Description          | Item | Part Number | Qty. | Description             |
|------|-------------|------|----------------------|------|-------------|------|-------------------------|
| 1    | 41595E      | 1    | Upper Weldment       | 8    | 41614E      | 1    | Washer 9/16" ID x 3/32" |
| 3    | 42368E      | 1    | Handle Lock Lever    | 9    | 42497E      | 1    | Roll Pin 5/32 x 7/8"    |
| 4    | 41600E      | 1    | Sleeve               | 11   | 88429E      | 4    | Washer SS 1/4"          |
| 5    | 41601E      | 1    | Handle Rod           | 12   | 42340E      | 4    | Pin Ring                |
| 6    | 41602E      | 1    | Spring . 656 x 9.50" | 13   | 42338E      | 2    | Pin Handle Lever        |
| 7    | 41613E      | 1    | E-Ring .8/.82 x .042 |      |             |      |                         |









## Enerpac Worldwide Locations

◆ e-mail: [info@enerpac.com](mailto:info@enerpac.com)

◆ internet: [www.enerpac.com](http://www.enerpac.com)

### Australia and New Zealand

Actuant Australia Ltd.  
Block V Unit 3  
Regents Park Estate  
391 Park Road  
Regents Park NSW 2143  
(P.O. Box 261) Australia  
T +61 (0)2 9743 8988  
F +61 (0)2 9743 8648  
[sales-au@enerpac.com](mailto:sales-au@enerpac.com)

### Brazil

Power Packer do Brasil Ltda.  
Rua Luiz Lawrie Reid, 548  
09930-760 - Diadema (SP)  
T +55 11 5687 2211  
F +55 11 5686 5583  
Toll Free: 0800 891 5770  
[vendasbrasil@enerpac.com](mailto:vendasbrasil@enerpac.com)

### Canada

Actuant Canada Corporation  
6615 Ordan Drive, Unit 14-15  
Mississauga, Ontario L5T 1X2  
T +1 905 564 5749  
F +1 905 564 0305  
Toll Free:  
T +1 800 268 4987  
F +1 800 461 2456  
[customer.service@actuant.com](mailto:customer.service@actuant.com)

### China

Actuant (China) Industries Co. Ltd.  
No.6 Nanjing East Road,  
Taicang Economic Dep Zone  
Jiangsu, China  
T +86 0512 5328 7500  
F +86 0512 5335 9690  
Toll Free: +86 400 885 0369  
[sales-cn@enerpac.com](mailto:sales-cn@enerpac.com)

### France, Switzerland, North Africa and French speaking African countries

ENERPAC  
Une division d'ACTUANT France S.A.  
ZA de Courtaboeuf  
32, avenue de la Baltique  
91140 VILLEBON /YVETTE  
France  
T +33 1 60 13 68 68  
F +33 1 69 20 37 50  
[sales-fr@enerpac.com](mailto:sales-fr@enerpac.com)

### Germany and Austria

ENERPAC GmbH  
P.O. Box 300113  
D-40401 Düsseldorf  
Willstätterstrasse 13  
D-40549 Düsseldorf, Germany  
T +49 211 471 490  
F +49 211 471 49 28  
[sales-de@enerpac.com](mailto:sales-de@enerpac.com)

### India

ENERPAC Hydraulics Pvt. Ltd.  
No. 1A, Peenya Industrial Area  
IInd Phase, Bangalore, 560 058, India  
T +91 80 40 792 777  
F +91 80 40 792 792  
[sales-in@enerpac.com](mailto:sales-in@enerpac.com)

### Italy

ENERPAC S.p.A.  
Via Canova 4  
20094 Corsico (Milano)  
T +39 02 4861 111  
F +39 02 4860 1288  
[sales-it@enerpac.com](mailto:sales-it@enerpac.com)

### Japan

Applied Power Japan LTD KK  
Besshocho 85-7  
Kita-ku, Saitama-shi 331-0821, Japan  
T +81 48 662 4911  
F +81 48 662 4955  
[sales-jp@enerpac.com](mailto:sales-jp@enerpac.com)

### Middle East, Egypt and Libya

ENERPAC Middle East FZE  
Office 423, LOB 15  
P.O. Box 18004, Jebel Ali, Dubai  
United Arab Emirates  
T +971 (0)4 8872686  
F +971 (0)4 8872687  
[sales-ua@enerpac.com](mailto:sales-ua@enerpac.com)

### Russia

Rep. office Enerpac  
Russian Federation  
Admirala Makarova Street 8  
125212 Moscow, Russia  
T +7 495 98090 91  
F +7 495 98090 92  
[sales-ru@enerpac.com](mailto:sales-ru@enerpac.com)

### Southeast Asia, Hong Kong and Taiwan

Actuant Asia Pte Ltd.  
83 Joo Koon Circle  
Singapore 629109  
T +65 68 63 0611  
F +65 64 84 5669  
Toll Free: +1800 363 7722  
[sales-sg@enerpac.com](mailto:sales-sg@enerpac.com)

### South Korea

Actuant Korea Ltd.  
3Ba 717, Shihwa Industrial Complex  
Jungwang-Dong, Shihung-Shi,  
Kyunggi-Do  
Republic of Korea 429-450  
T +82 31 434 4506  
F +82 31 434 4507  
[sales-kr@enerpac.com](mailto:sales-kr@enerpac.com)

### Spain and Portugal

ENERPAC SPAIN, S.L.  
Avda. Los Frailes, 40 – Nave C & D  
Pol. Ind. Los Frailes  
28814 Daganzo de Arriba  
(Madrid) Spain  
T +34 91 884 86 06  
F +34 91 884 86 11  
[sales-es@enerpac.com](mailto:sales-es@enerpac.com)

### Sweden, Denmark, Norway, Finland and Iceland

Enerpac Scandinavia AB  
Fabriksgatan 7  
412 50 Gothenburg  
Sweden  
T +46 (0) 31 799 0281  
F +46 (0) 31 799 0010  
[scandinavianinquiries@enerpac.com](mailto:scandinavianinquiries@enerpac.com)

### The Netherlands, Belgium, Luxembourg, Central and Eastern Europe, Baltic States, Greece, Turkey and CIS countries

ENERPAC B.V.  
Galvanistraat 115  
6716 AE Ede  
P.O. Box 8097  
6710 AB Ede  
The Netherlands  
T +31 318 535 911  
F +31 318 535 848  
[sales-nl@enerpac.com](mailto:sales-nl@enerpac.com)

### Enerpac Integrated Solutions B.V.

Opaalstraat 44  
7554 TS Hengelo  
P.O. Box 421  
7550 AK Hengelo  
The Netherlands  
T +31 74 242 20 45  
F +31 74 243 03 38  
[integratedsolutions@enerpac.com](mailto:integratedsolutions@enerpac.com)

### South Africa and other English speaking African countries

Enerpac Africa Pty Ltd.  
No. 5 Bauhinia Avenue  
Cambridge Office Park  
Block E  
Highveld Techno Park  
Centurion 0157  
South Africa  
T: +27 12 940 0656

### United Kingdom and Ireland

ENERPAC Ltd.,  
Bentley Road South  
Darlaston, West Midlands  
WS10 8LQ  
England  
T +44 (0)121 50 50 787  
F +44 (0)121 50 50 799  
[sales-uk@enerpac.com](mailto:sales-uk@enerpac.com)

### USA, Latin America and Caribbean

ENERPAC  
P.O. Box 3241  
Milwaukee WI 53201 USA  
T +1 262 293 1600  
F +1 262 293 7036  
User inquiries:  
T +1 800 433 2766  
Distributor inquiries/orders:  
T +1 800 558 0530  
F +1 800 628 0490  
Technical inquiries:  
[techservices@enerpac.com](mailto:techservices@enerpac.com)  
[sales-us@enerpac.com](mailto:sales-us@enerpac.com)

All Enerpac products are guaranteed  
against defects in workmanship and  
materials for as long as you own them.

For the location of your nearest authorized  
Enerpac Service Center, visit us at  
[www.enerpac.com](http://www.enerpac.com)

012313