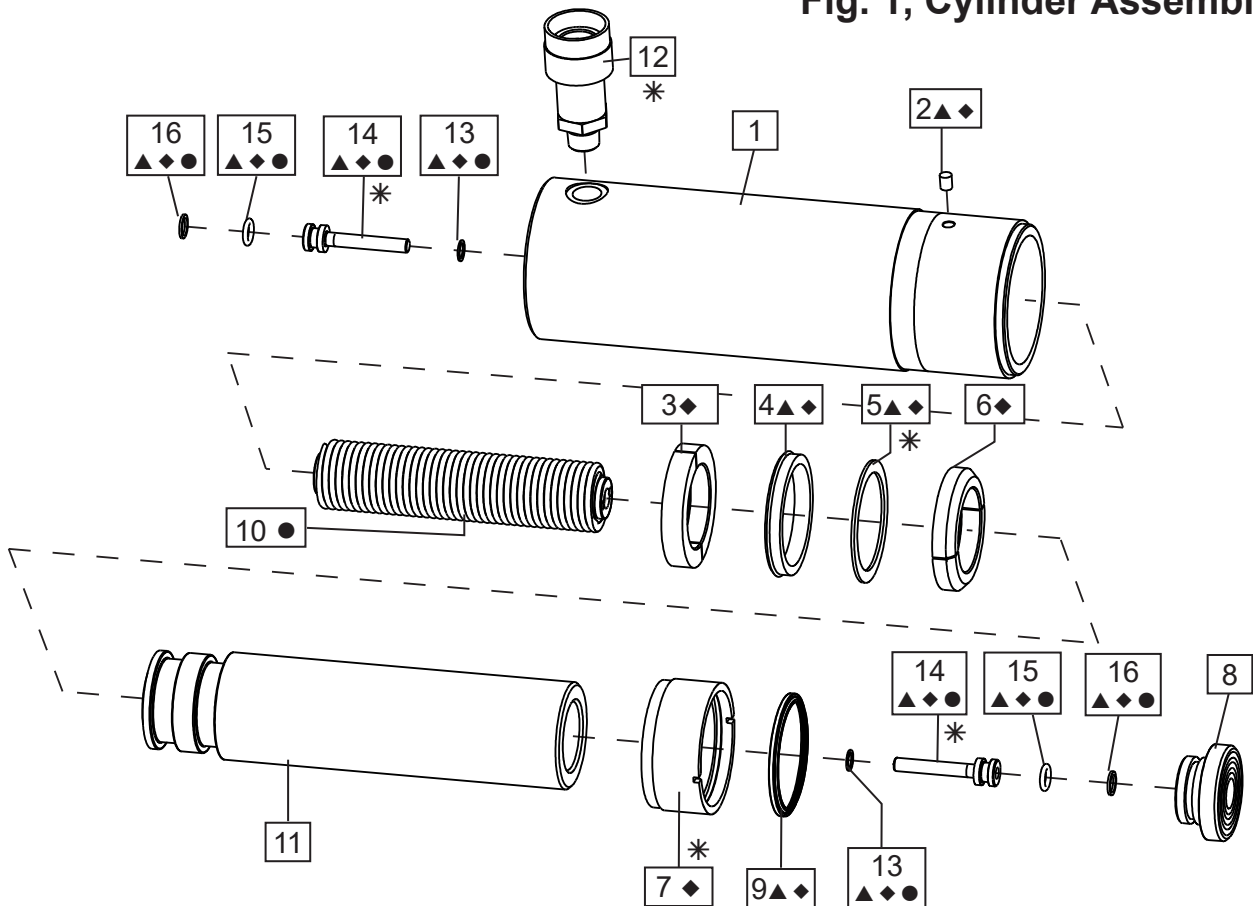


Repair Parts Sheet	Revision	Revision Date	Product Code Beginning
L3019	Rev. F	10/22	C

**Fig. 1, Cylinder Assembly**



- ▲ = Standard Repair Kit RC25K52.
- = Spring Kit (varies by cylinder model - see page 2).
- ◆ = Premium Repair Kit RC25K72.
- \* = See *Notes* section for additional information.



**Note: See Page 2  
for parts list.**

**\* Notes**

Item	Torque / notes
5	Washer to be placed with the sharp edge towards U-Cup.
7	7.9 - 10.2 Nm, 70 - 90 In - Lbs
7	Secure with Loctite 222.
12	54 - 81 Nm, 40 - 60 Ft - Lbs
12	Use Loctite 545 or Teflon tape.
14	10.2 - 12.4 Nm, 90 - 110 In - Lbs

## Repair Parts List, Figure 1

# L3019

Item	Description	Qty.	Part Number				
			RC-256	RC-258	RC-2510	RC-2512	RC-2514
1	Base	1	(Not Available)	(Not Available)	(Not Available)	(Not Available)	(Not Available)
2	Filter ▲◆	1	PA1203118	PA1203118	PA1203118	PA1203118	PA1203118
3	Bearing, Bottom ◆	1	DD2295107	DD2295107	DD2295107	DD2295107	DD2295107
4	U-Cup ▲◆	1	DD2390041	DD2390041	DD2390041	DD2390041	DD2390041
5	Washer ▲◆	1	G907108	G907108	G907108	G907108	G907108
6	Bearing, Top ◆	1	DD2296107	DD2296107	DD2296107	DD2296107	DD2296107
7	Stop Ring ◆	1	G899044	G899044	G899044	G899044	G899044
8	Saddle, Grooved	1	A252G	A252G	A252G	A252G	A252G
9	Wiper Ring ▲◆	1	G731044	G731044	G731044	G731044	G731044
10	Spring ●	1	DD2302110	DD2305110	DD2287110	DD2292110	DD2297110
11	Plunger	1	(Not Available)	(Not Available)	(Not Available)	(Not Available)	(Not Available)
12	Coupler	1	CR-400	CR-400	CR-400	CR-400	CR-400
13	Gasket ▲◆●	2	C846037	C846037	C846037	C846037	C846037
14	Spring Retainer ▲◆●	2	DD1543160	DD1543160	DD1543160	DD1543160	DD1543160
15	O-Ring ▲◆●	2	B1110903	B1110903	B1110903	B1110903	B1110903
16	Back-up ▲◆●	2	B1110564	B1110564	B1110564	B1110564	B1110564
N/S	Dust Cap ▲◆	1	DD1782020	DD1782020	DD1782020	DD1782020	DD1782020
N/S	Thread Protector ▲◆	1	DD1776271	DD1776271	DD1776271	DD1776271	DD1776271
N/S	O-Ring Coupler ▲◆	1	B1116803	B1116803	B1116803	B1116803	B1116803
N/S	Enerpac Decal ▲◆	1	DD2217026	DD2216026	DD2217026	DD2217026	DD2218026
N/S	Warning Decal ▲◆	1	DA5625026	DA5117026	DA5117026	DA5117026	DA5117026
N/S	O-Ring Saddle ▲◆	1	B1021503	B1021503	B1021503	B1021503	B1021503
▲	Repair Kit, Standard	-	RC25K52	RC25K52	RC25K52	RC25K52	RC25K52
◆	Repair Kit, Premium	-	RC25K72	RC25K72	RC25K72	RC25K72	RC25K72
●	Spring Kit	-	RC25K34	RC25K35	RC25K36	RC25K37	RC25K38

**Notes:**

Premium repair kit includes all standard (▲) repair kit items plus additional premium (◆) items.

N/S = Item not shown.

**IMPORTANT:** Shaded items are available only in kits (not sold separately).

Cylinders with Viton components only: Order Repair Kit RC2510KV in addition to Repair Kit RC25K52 or RC25K72. Repair Kit RC2510KV includes Viton components for items 4 and 9. Standard components are used in other locations.



**To maintain your warranty:**

- Use only Enerpac Oil
- Have your products inspected and repaired by an Enerpac Authorized Service Center



Visit [www.enerpac.com](http://www.enerpac.com) for the location of the Enerpac Authorized Service Center nearest you.